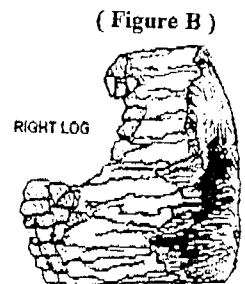
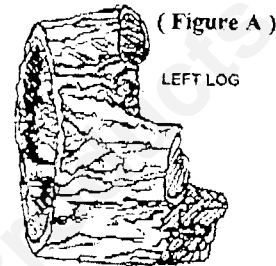


# BRECKWELL PELLET STOVES

## LOG SET INSTALLATION INSTRUCTIONS KITS # A - M - 2000 AND # A - M - LOG

### ABOUT THE LOGS:

*Modeled from real logs, this ceramic fiber log set has been hand carved, molded, cast and hand painted to enhance the appearance of your new Pellet Stove.*

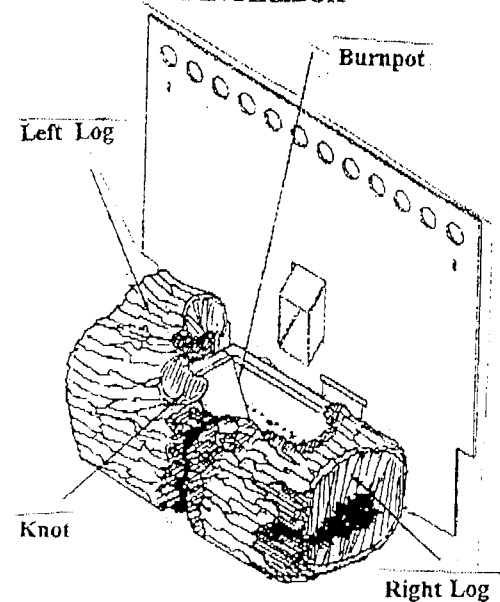


### INSTALLATION:

1. Carefully remove both logs from the box. ( Please discard the packaging responsibly with regard to environment.)
2. The logs can only fit one way in the firebox.. ( see figure C ) Open the door. Gently insert the left and the right logs, one at a time. Distance between the logs is a matter of preference.
3. The burnpot can be STIRRED without removing the logs.
4. Logs must be removed **PRIOR TO REMOVING THE BURNPOT** for cleaning. Wait until the stove is cool as **THEY MAY BE HOT.**
5. **AVOID** bumping or scraping logs while handling as parts of the logs can be chipped off.

( Figure C )

#### LOG PLACEMENT IN FIREBOX



#### LIMITED WARRANTY

*This log set is warranted against thermal damage for one year from the purchase date. The log set should be HANDLED CAREFULLY as it is fragile in nature.*

*The warranty DOES NOT APPLY if the product is abused, due to mishandling, or if it is used for any other purpose not found in the printed instructions. Any product damaged due to shipping will be replaced within 30 days.*



P/N 532/533