



Fabricant de poêles international inc.  
Stove Builder International Inc.

# TECHNICAL SUPPORT DOCUMENTATION

No. 45720

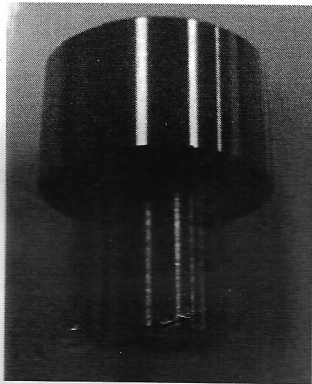
Page 1 of 10

## SE30789

### HOW TO CHANGE AN IGNITER ON A 65 SERIE PELLET STOVE

ECO-65 (DP00055)  
EUROMAX (EP00060)

#### REQUIRED EQUIPMENT



Tube (P/N 30780)

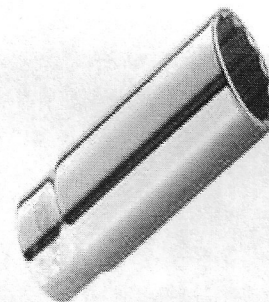
#### REQUIRED TOOLS



Socket wrench



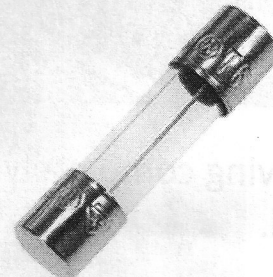
Igniter (P/N 44132)



Socket 5/16"



Allen key 1/8"



3A fuse

Note that parts provided in this retrofit repair kit may differ from original parts or those shown in this leaflet.

45720F  
30-10-2015



Fabricant de poêles international inc.  
Stove Builder International Inc.

# TECHNICAL SUPPORT DOCUMENTATION

No. 45720

Page 2 of 10

SE30789

HOW TO CHANGE AN IGNITER ON A 65 SERIE PELLET STOVE

ECO-65 (DP00055)  
EUROMAX (EP00060)

**STEP 1 – Note that all the pictures are from the ECO-65 and might be slightly different for an EUROMAX.**

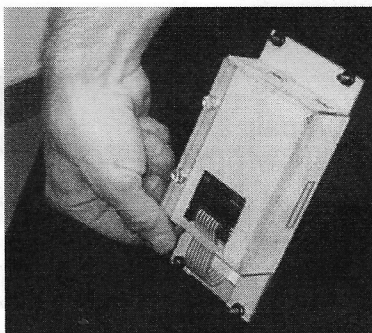


Before undertaking the following changes, unplug the stove from the wall outlet.

On the right hand side of the stove, slide the decorative panel towards the front of the unit until the rail bearing lines up with the notch in the rail. Pull on the panel and then lift to remove the panel.



Before removing completely the panel unplug the computer cable that goes into the PC board.





Fabricant de poêles international inc.  
Stove Builder International Inc.

# TECHNICAL SUPPORT DOCUMENTATION

No. 45720

Page 3 of 10

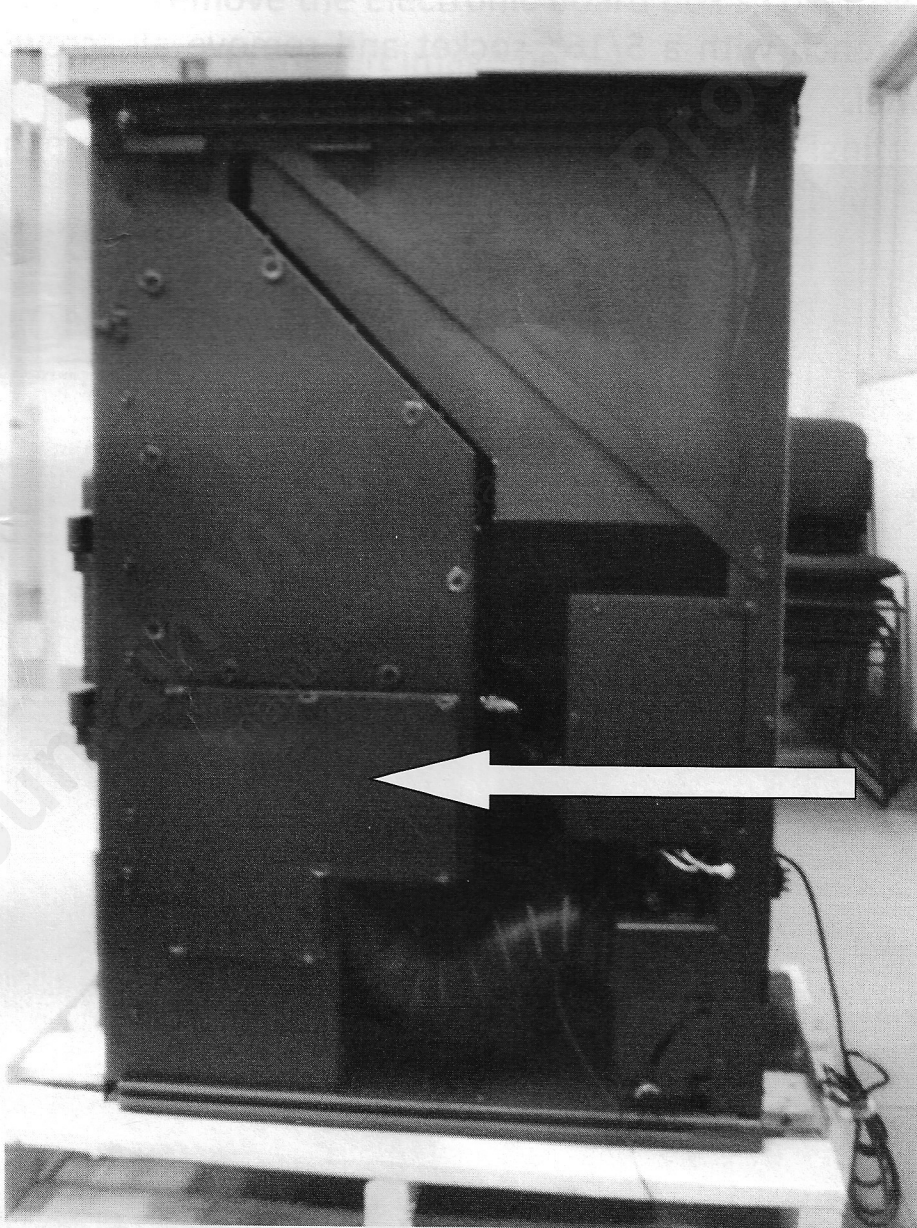
## SE30789

### HOW TO CHANGE AN IGNITER ON A 65 SERIE PELLET STOVE

ECO-65 (DP00055)  
EUROMAX (EP00060)

## STEP 2

Lift and turn all seven panel attachments and remove the bottom panel.





Fabricant de poêles international inc.  
Stove Builder International Inc.

# TECHNICAL SUPPORT DOCUMENTATION

No. 45720

Page 4 of 10

## SE30789

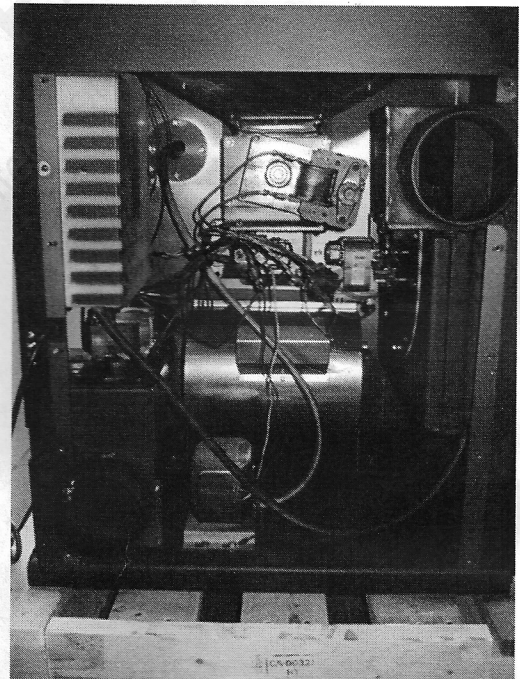
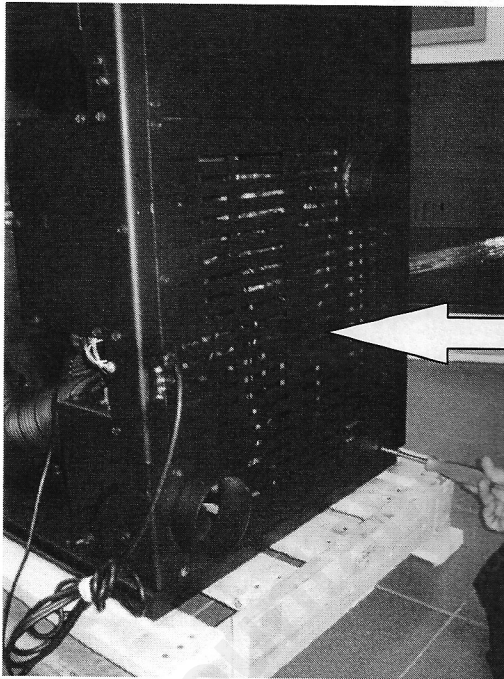
### HOW TO CHANGE AN IGNITER ON A 65 SERIE PELLET STOVE

ECO-65 (DP00055)  
EUROMAX (EP00060)

## STEP 3

**Note:** This step is not mandatory but will ease access to the igniter connections.

Take a socket wrench with a 5/16" socket and remove all screws that hold the bottom back panel.





Fabricant de poêles International inc.  
Stove Builder International Inc.

# TECHNICAL SUPPORT DOCUMENTATION

No. 45720

Page 5 of 10

## SE30789

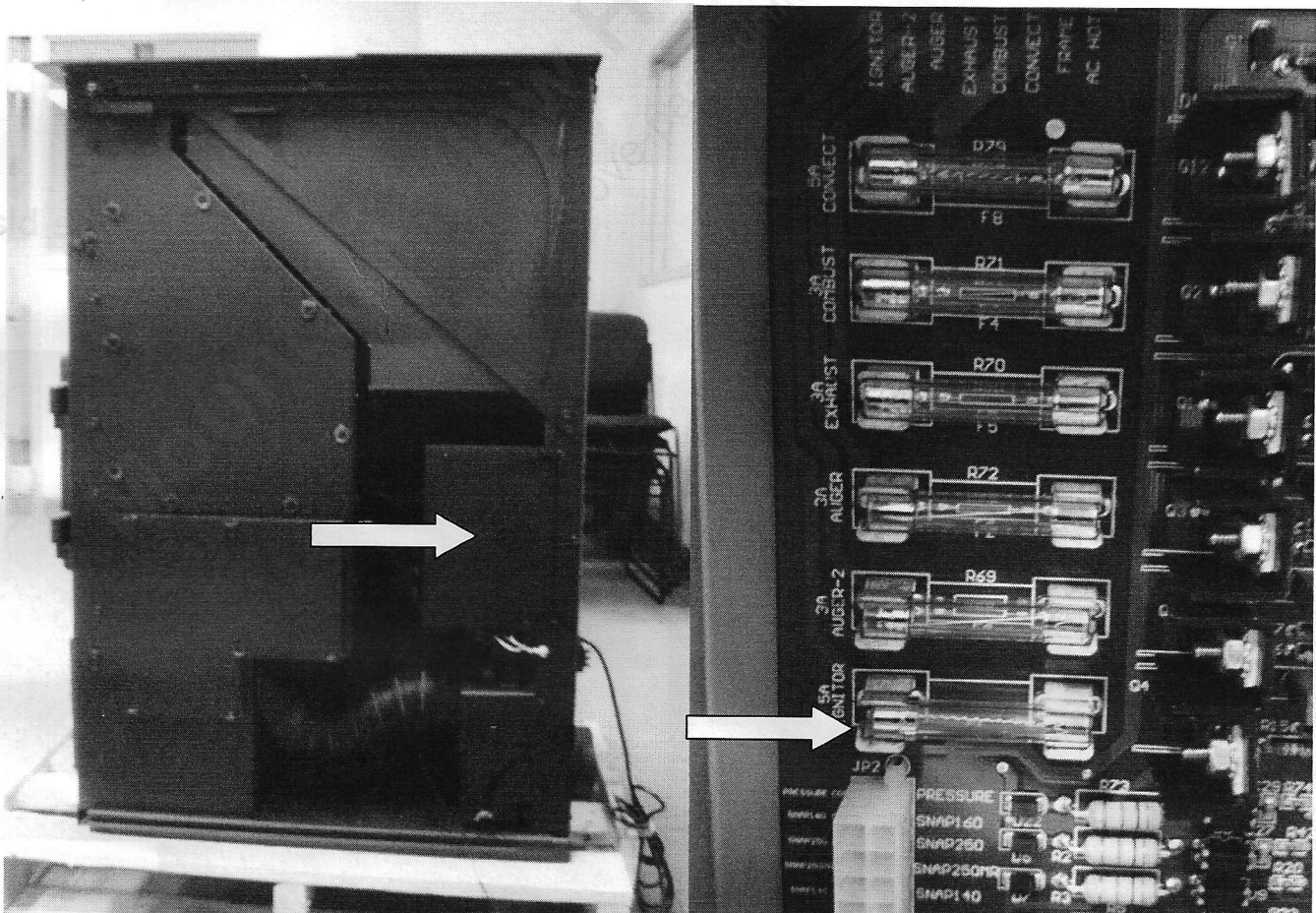
### HOW TO CHANGE AN IGNITER ON A 65 SERIE PELLET STOVE

ECO-65 (DP00055)  
EUROMAX (EP00060)

## STEP 4

The igniter's fuse must be replaced to avoid damaging the igniter in a case of power surge. To do so, remove the electronic board box's cover by unscrewing the five (5) screws as indicated in the left image below.

Once the cover removed, replace the 5 amperes fuse of the igniter already on the electronic board with the 3 amperes fuse provided in the replacement kit. The igniter fuse is located at the base of the fuses column as indicated in the right image below.





Fabricant de poêles international inc.  
Stove Builder International Inc.

# TECHNICAL SUPPORT DOCUMENTATION

No. 45720

Page 6 of 10

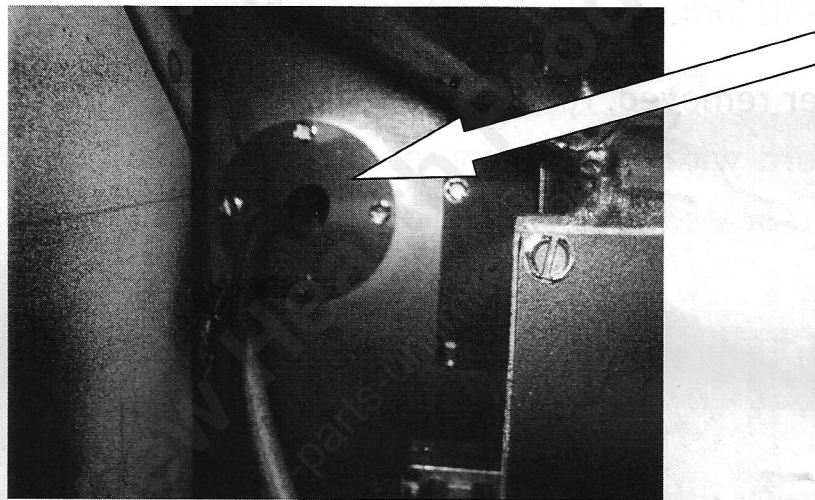
**SE30789**

**HOW TO CHANGE AN IGNITER ON A 65 SERIE PELLET STOVE**

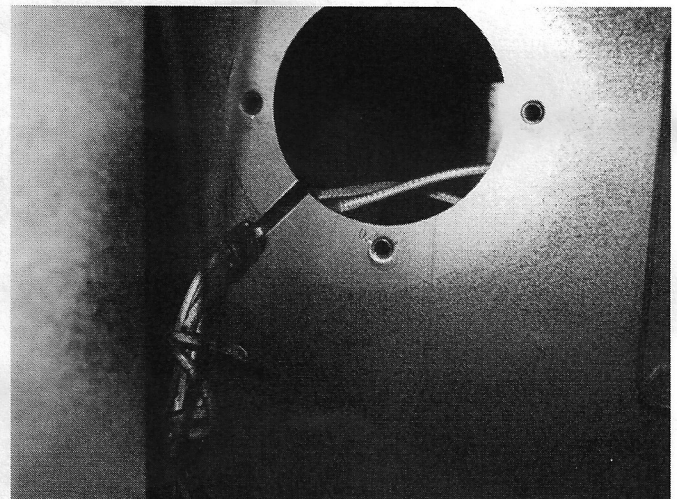
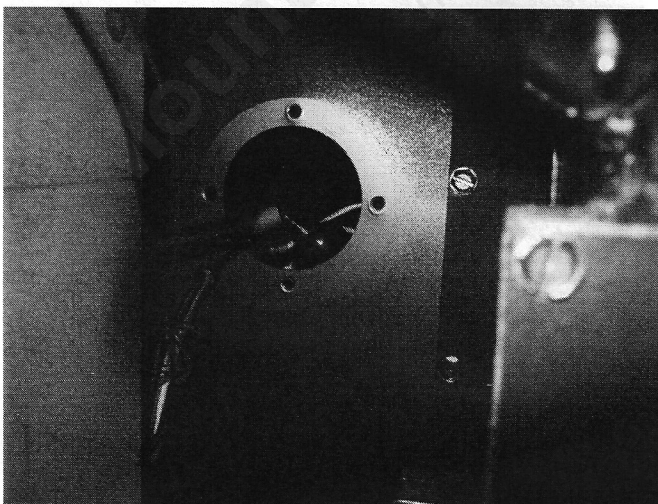
ECO-65 (DP00055)  
EUROMAX (EP00060)

## STEP 5

Remove the four screws that hold the plate where the air tube is connected to the igniter. If step 3 was skipped this can be done from the side of the unit



Pull on the rubber tube and disconnect it from the igniter. Also pull on the black plastic wire holder.





Fabricant de poêles international inc.  
Stove Builder International Inc.

# TECHNICAL SUPPORT DOCUMENTATION

No. 45720

Page 7 of 10

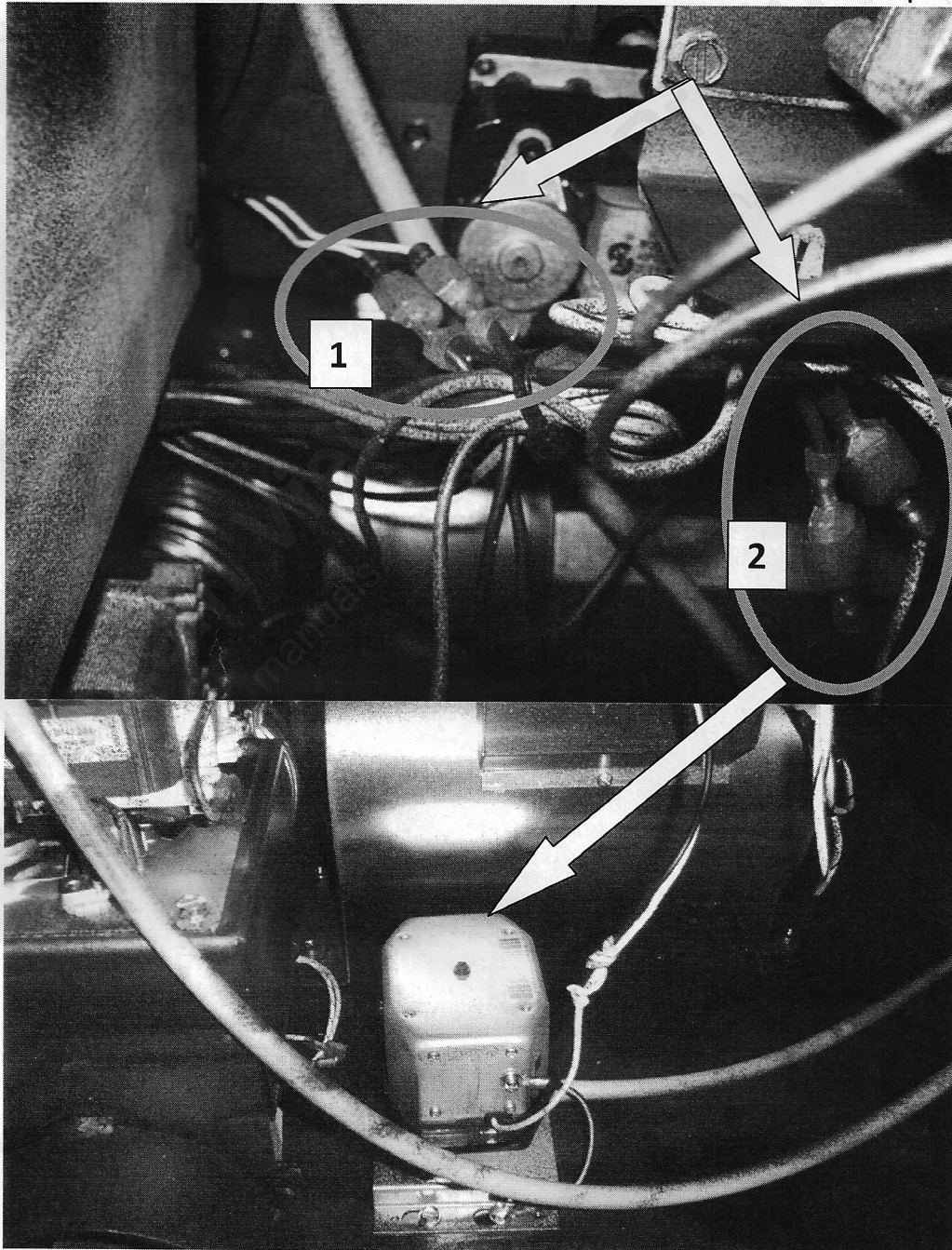
**SE30789**

**HOW TO CHANGE AN IGNITER ON A 65 SERIE PELLET STOVE**

ECO-65 (DP00055)  
EUROMAX (EP00060)

## STEP 6

1. Disconnect the two igniter white wires connected to the two purple wires.
2. Disconnect the pump black and white wires connected to two purple wires.





Fabricant de poêles international inc.  
Stove Builder International Inc.

# TECHNICAL SUPPORT DOCUMENTATION

No. 45720

Page 8 of 10

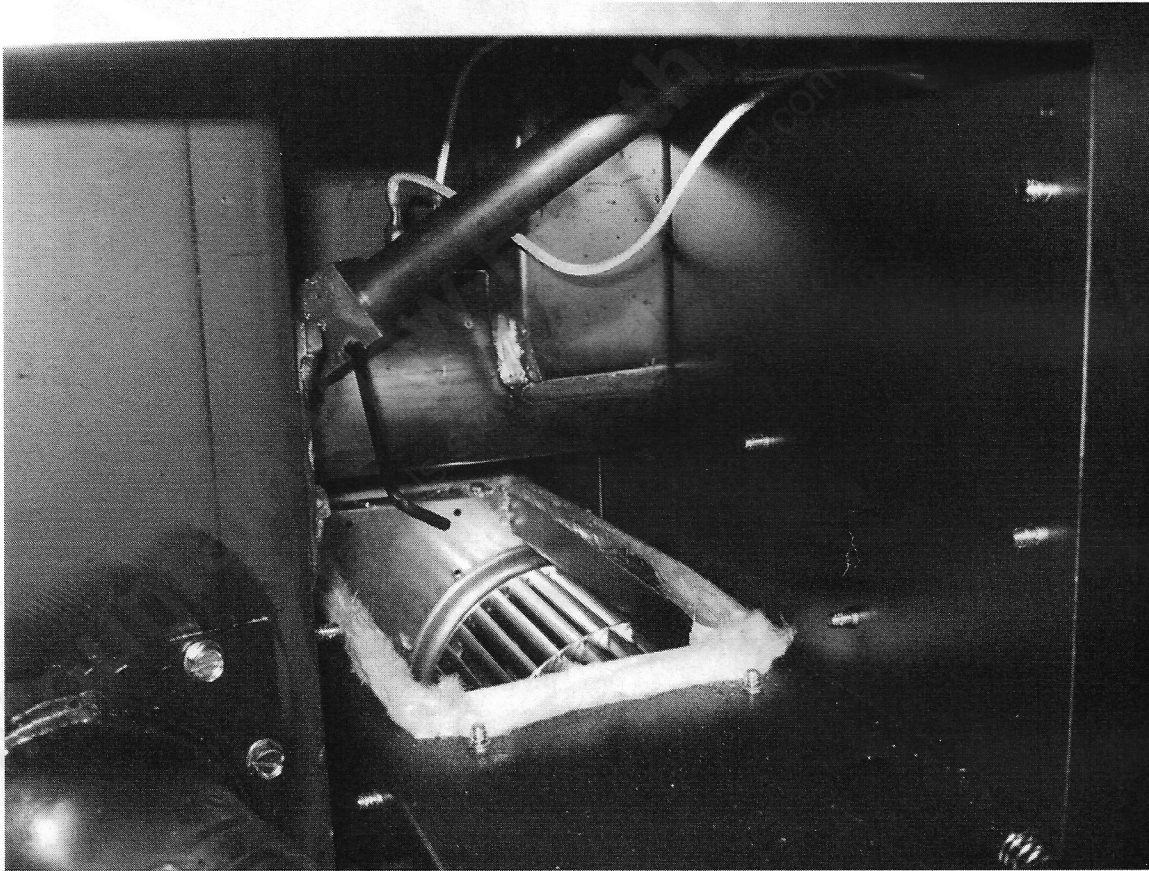
**SE30789**

**HOW TO CHANGE AN IGNITER ON A 65 SERIE PELLET STOVE**

ECO-65 (DP00055)  
EUROMAX (EP00060)

## STEP 7

Take a 1/8" Allen key and loosen the set screw on the igniter socket. Be careful not to drop anything in the blower underneath. Pull on the igniter to remove it. Remove also the connections. Note that on the older models, the set screw was on the other side of the igniter socket, at the top.





Fabricant de poêles international inc.  
Stove Builder International Inc.

# TECHNICAL SUPPORT DOCUMENTATION

No. 45720

Page 9 of 10

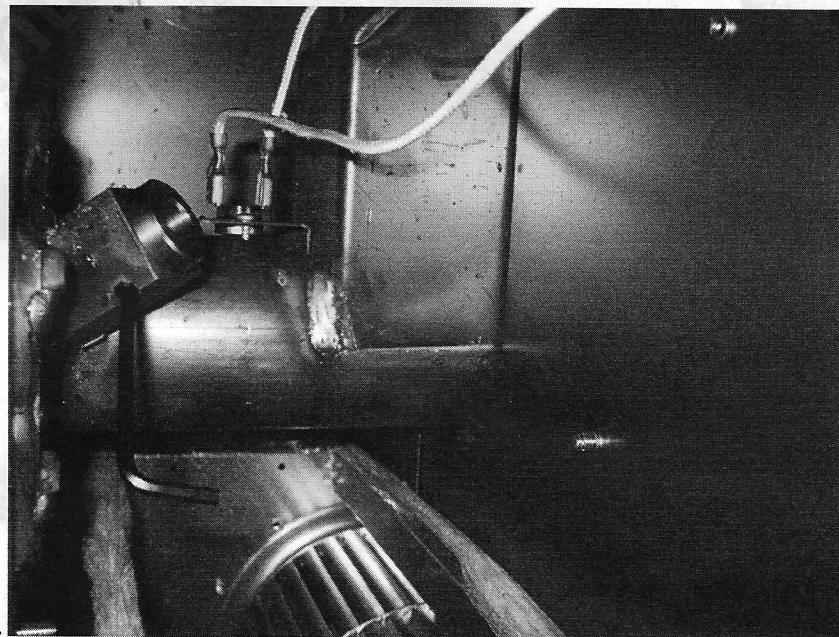
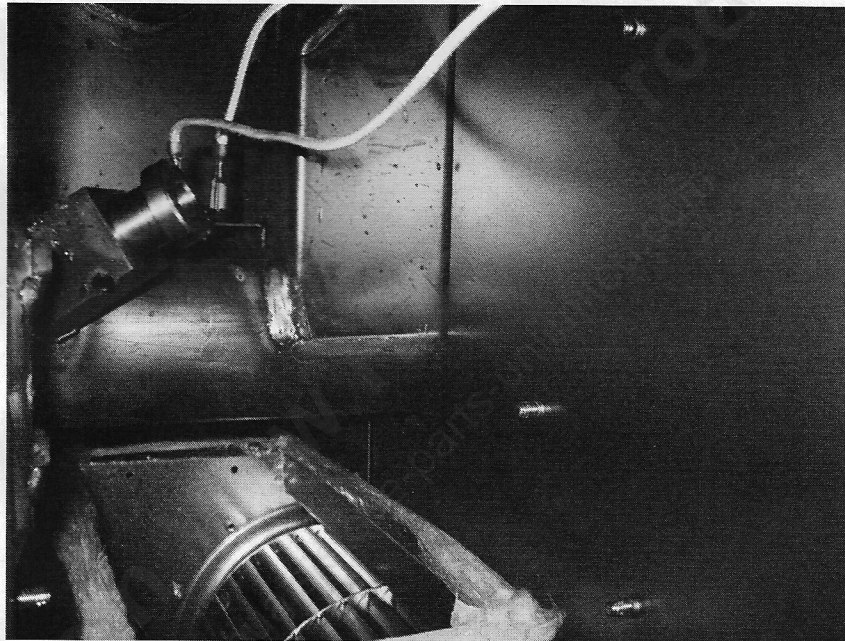
**SE30789**

**HOW TO CHANGE AN IGNITER ON A 65 SERIE PELLET STOVE**

ECO-65 (DP00055)  
EUROMAX (EP00060)

## STEP 8

Insert the tube adaptor (P/N 30789) in the support, push it all the way down and tighten the Allen screw.





Fabricant de poêles international inc.  
Stove Builder International Inc.

# TECHNICAL SUPPORT DOCUMENTATION

No. 45720

Page 10 of 10

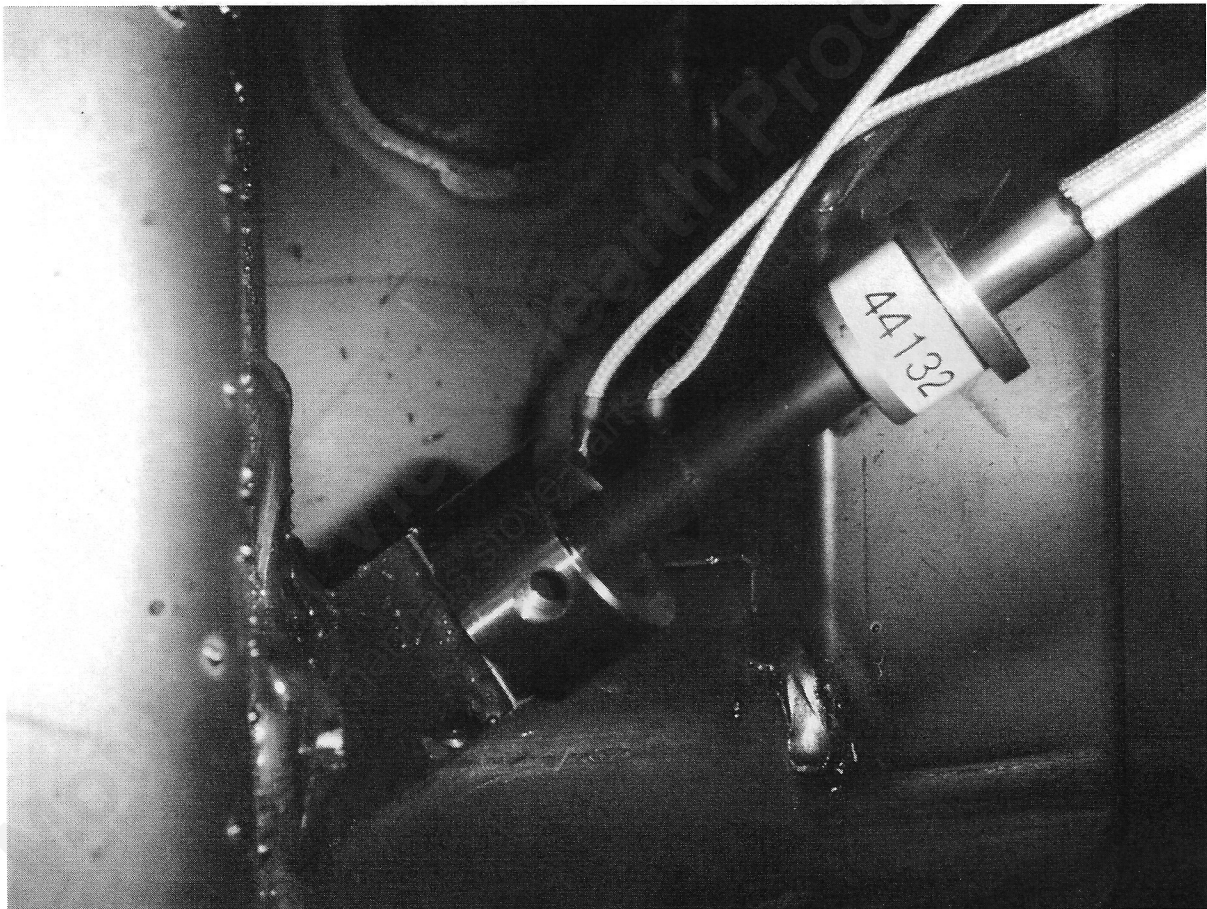
**SE30789**

**HOW TO CHANGE AN IGNITER ON A 65 SERIE PELLET STOVE**

ECO-65 (DP00055)  
EUROMAX (EP00060)

## STEP 9

Insert the igniter (P/N 44132) in the tube and reconnect the two white wires on the purple wires as # 1 in step 6\* and reverse the procedure to reinstall the panels.



\*The pump's black and white wires as # 2 in step 6 don't need to be connected back.