

# KOZI MX2 CONTROL

## Conversion Instructions

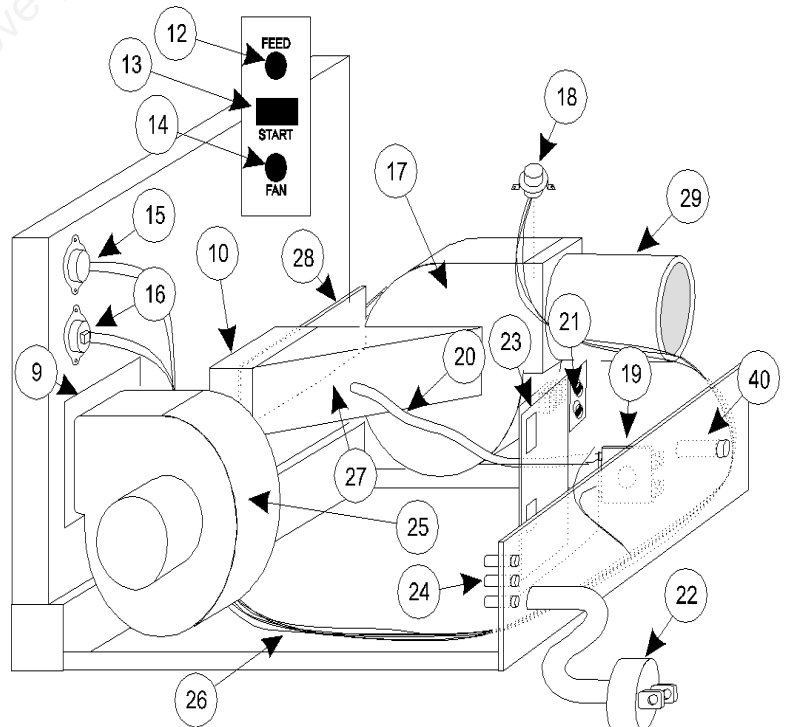


### THIS KIT SHOULD CONTAIN:

- 1 “Conversion” instructions
- 1 “How it Works” MX2 instructions
- 1 side panel
- 1 control board
- 1 wiring harness
- 5 zip ties

### CONVERSION INSTRUCTIONS:

1. Allow the stove to cool to room temperature and unplug it from the electrical outlet. Remove the Burner Pot and Burner Pot Stand from the stove as well as all the ashes. Clean the stove according to the user's manual. Replace all parts in their original positions.
2. On stoves equipped with Thermo-Pile sensor, remove splash guard (Cut thermo-pile sensor wire to remove) and discard. Replace with new guard supplied (without thermo-pile sensor).
3. Open left side panels (damper control side)
4. Open right side panel (Feed/Fan control side)
5. Unplug, remove and discard existing wiring harness (cut all zip ties holding harness to stove).  
**NOTE:** when removing harness from auger motor, do not disconnect the wires at the motor. Follow the 2 - blue and white 8” wires into the wiring harness and disconnect them from the harness. These “extension” wires will be needed.
6. Remove right side panel and discard. Replace with new panel supplied.
7. Remove the 2 bolts holding the control board (#23) and control board mounting plate (#21) or timers if equipped. Discard all pieces.
8. Working from the circulation fan side, Install new wiring harness as follows. Refer to circuit diagram for more information.
  - a. Plug main connector into control board (located on the new side panel)
  - b. Plug black and white wires into black and white wires for power cord (#22)
  - c. Plug white and pink wires into black wires from circulation fan motor (#25)
  - d. Plug orange wires into manual reset thermal disk (#16)
  - e. Plug pink and black wires into high limit disk (#15)
  - f. Plug grey wires into pressure switch.(#19) Grey wires should be plugged into outside terminals. (i.e. there should be an unused terminal between the 2 grey wires once they are plugged in.)
  - g. Slide the remainder of the harness below the air intake tube to the other side of the stove.



9. Working from the exhaust fan side, finish wiring the harness as follows:
  - a. Plug the longer of the 2 brown wires into the top terminal of the thermal disk. (#18, located on the exhaust fan housing)
  - b. Plug the shorter of the 2 brown wires into the bottom terminal of the thermal disk.
  - c. Plug the blue and white wires into the black and white wires of the exhaust fan motor. (#17)
  - d. If your stove has a fuse holder, plug the red wire into the fuse holder. Plug the white wires into the 1 of the 2 igniter wires (not shown). Plug the other igniter wire into the fuse holder.
  - e. If your stove has no fuse holder, plug the red and white wires into the igniter wires (not shown).
  - f. Plug the yellow and white wires into the blue and white wires from the auger motor.(not shown)

10. Use the zip ties supplied to fasten the harness in place. Be careful of the following:
  - a. No wires touching the exhaust fan housing or the black plastic fan.
  - b. No wires interfering with the auger motor fan.
  - c. No wires touching the circulation fan body (except where held by zip ties)
  - d. No wires being pinched by closing doors.

11. Connect the wall thermostat wires to the 2 terminals on the control board.
12. Close both side panels.
13. Verify that the switch on the control board is set to manual.
14. Plug the stove in.

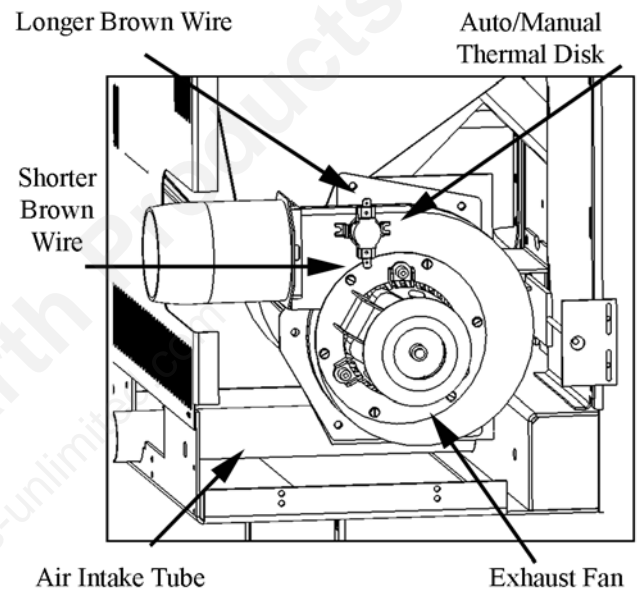
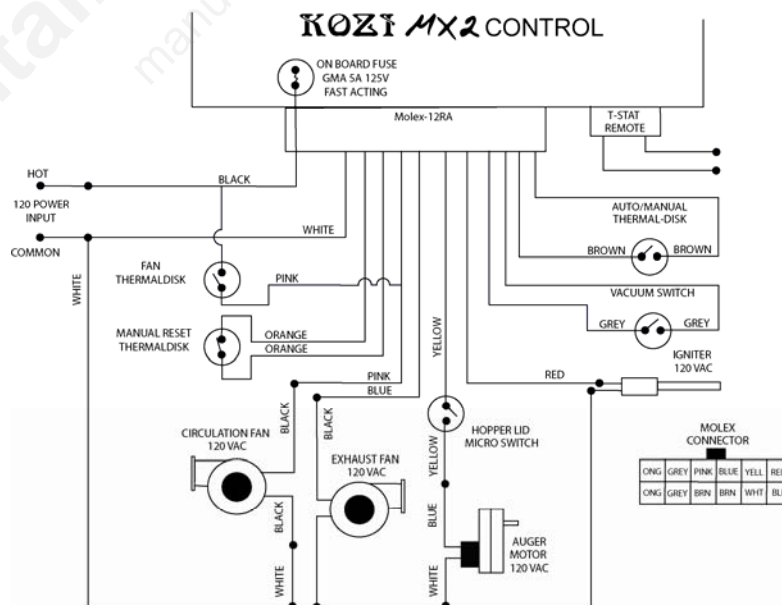


Figure 1: Equipment Compartment



Your stove has now been upgraded to the latest technology. Press the ON/OFF button on the control board to start your stove.