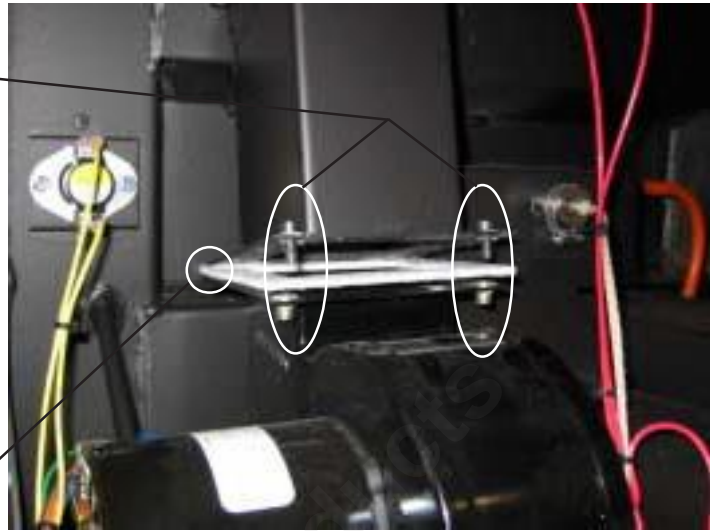


Allen Screws

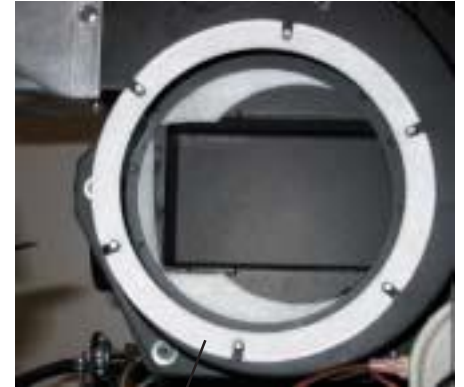
To remove the convection blower, loosen and remove the two allen screws. When reinstalling, slide the back of the blower into the $\delta V\delta$ channel, making sure the gasket (Part #01-0300-0231) is positioned properly. Start the screws by hand to avoid cross threading.

$\delta V\delta$ Channel



To remove the combustion blower motor, remove the six nuts using a 11/32 δ wrench. The fan blades and the inside of the blower housing can now be cleaned. During reinstallation, make sure a new gasket is used (Part # 01-0300-0232), and the motor's green ground wire is secured under one of the nuts.

PI40 & PS40



New Gasket (Part # 01-0300-0232)

Allen Screws



To remove the blower housing from the stove, remove the four allen screws.

To replace the combustion fan housing gasket (Part # 35210), scrape off old gasket material using a putty knife. Using high temp. RTV silicone, stick the new gasket into position. Make sure the square portion of the gasket is lined up with the left, square edge of the exhaust passageway.