



WARNING:



Improper Installation Will VOID Warranty!

⚠ Check your bracket system before installation!

If you have the old bracket system (4 long 3" bolts securing the motor, and an auger machined like a flathead screwdriver), you **MUST upgrade to the M3636 Bracket Kit to avoid motor failure.**

Your bracket should have qty 3 of the 1/2" length bolts and qty 1 of the 1 1/4" bolt with spacer. If you do not have the 1 1/4" bolt with spacer you must also purchase the M3636 bracket kit.

- ✓ **Carefully follow the attached installation instructions.**
- ✓ **Check & clear auger jams before installing the new motor.**
- ✓ **Do NOT overtighten spacer bolt.**
- ✓ **Ensure your bracket is not bent or out of alignment.**

A misaligned auger can lead to excess play, binding, and internal gear failure, which may cause motor burnout.

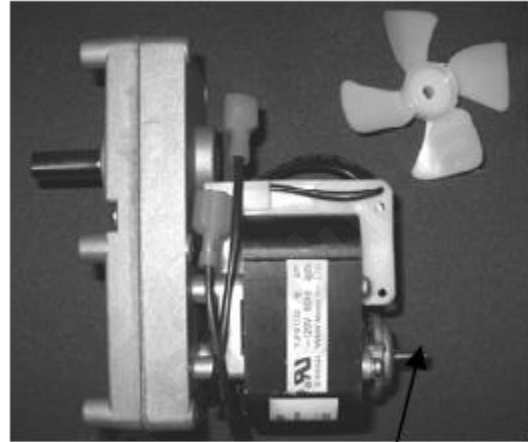
If unsure, send a picture of your setup before installation for guidance.

Mountain View Hearth Products
manuals.stove-parts-unlimited.com

MF3573 Auger Motor Assembly

All Magnum Countryside units and 7500 (from 2006 to present)

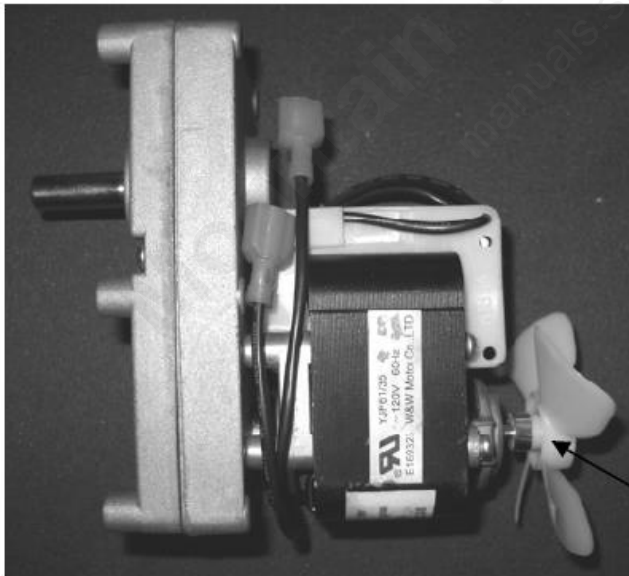
- (1) MF3573 Auger Motor
- (1) FAN3573CN Fan Blade



motor shaft

- Carefully remove from packaging.
- Mount fan blade to the motor shaft by gently pressing the fan blade onto the shaft. (must be flush as shown).

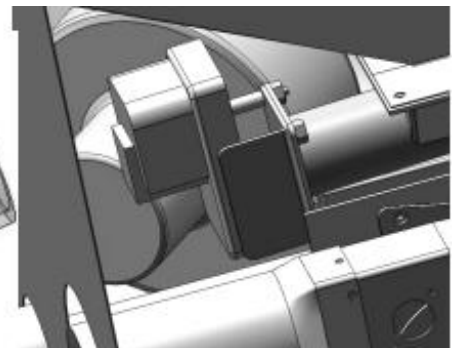
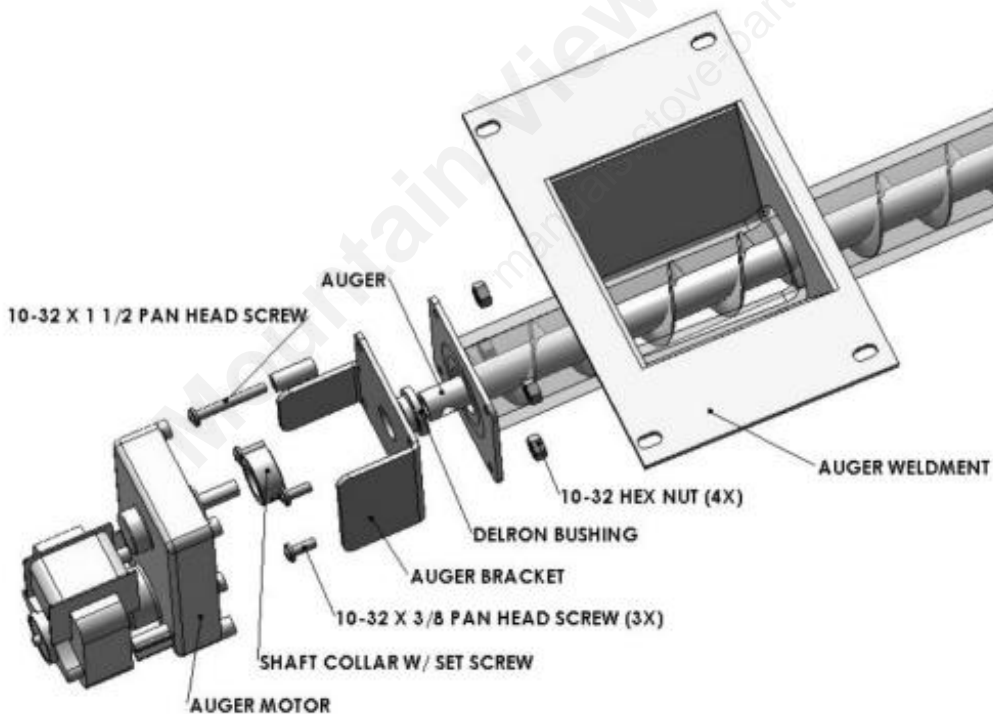
Make sure shaft is flush to blade.



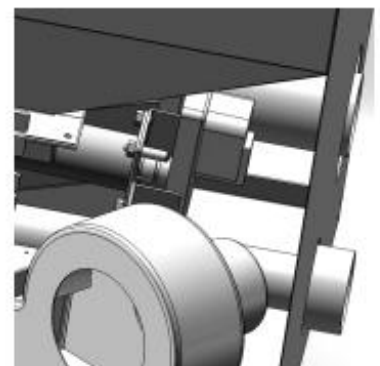
metal collar towards motor

- Turn off power on control panel and unplug from the power supply.
- Remove all pellets from hopper.

- Open right side panel.
- Disconnect the auger motor leads from the wire harness.
- Loosen Allen screw on auger shaft collar w/ set screw.
- Pull off auger motor.
- Turn auger shaft by hand, if it does not turn freely, investigate and clear the jam before proceeding. **Failure to clear an auger jam will result in motor failure.**
- Compare your feed system to the diagram below to ensure all components are correctly positioned.
- Slide the shaft collar back on auger shaft, aligning the set screw to hole on the auger shaft. Tighten the screw only enough to keep it from slipping off the shaft.
- Position the auger motor - The motor can be installed facing up or down. Match the position of your old motor. Most units have the motor facing up, while the Model 7500 has it facing down. Some other units may also need a downward position to avoid contact with stove components.
- Slide on the auger motor by aligning the flat shaft on the auger to the Allen screw on shaft collar and then tighten the set screw on the collar.
- Reconnect auger motor electrical leads and make sure wires are secured properly in the right panel.
- Close side panel.
- Restart unit.



Looking in from LH side



Looking in from RH side