

# Acutron Control Installation Instructions



**PART NUMBER**  
KS-5040-1100  
KS-5040-1101

**NOTE: Always Disconnect Power Before Performing Service Work**

**STEP 1:** Unplug the stove.

**STEP 2:** Remove the rear access panel at the rear of the stove. There are four 1/4" hex head screws holding the panel in place.

**STEP 3:** Gently disconnect the white 9 pin molex connector from the control board.

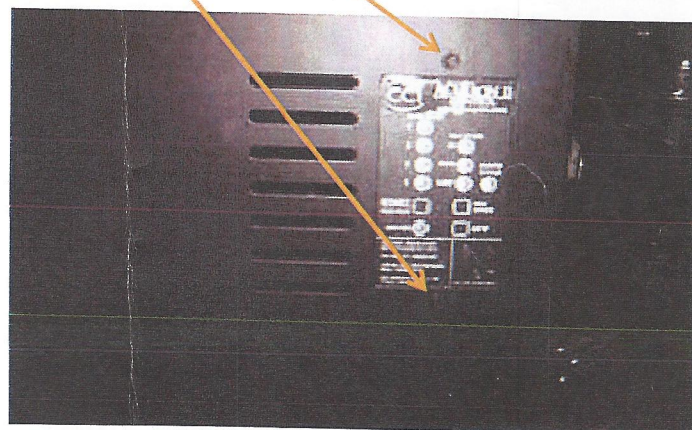
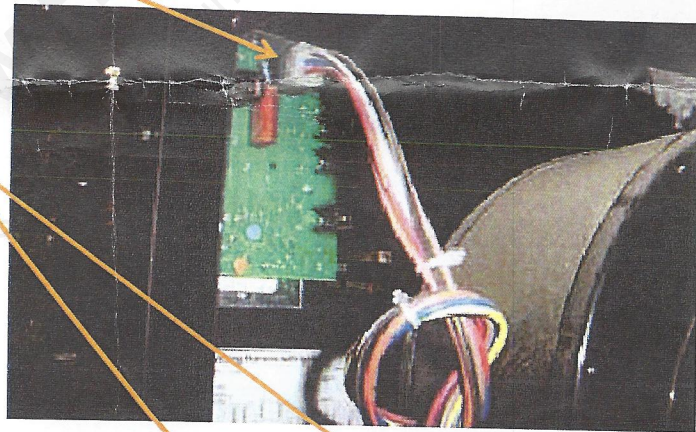
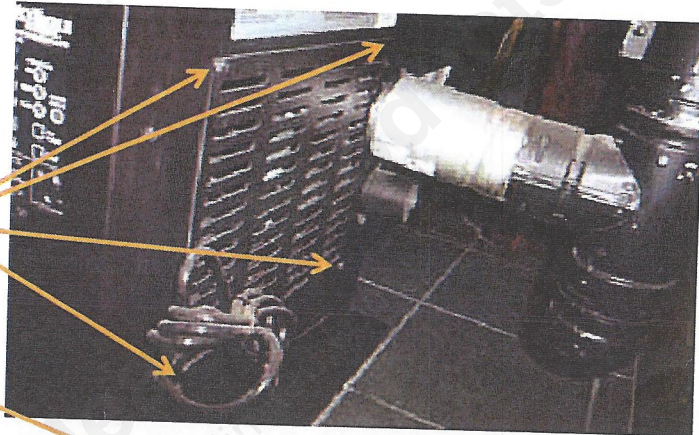
**STEP 4:** Hold the control board with your hand from the back side while removing the screws via the side of the stove. Remove the two 1/4" hex head screws. Remove the control board thru the rear access panel.

**STEP 5:** Place the new control board in the opening and replace the two 1/4" hex head screws.

**STEP 6:** Connect the 9 pin molex connector to the control board making sure the connection is tight.

**STEP 7:** Install the rear access panel with the four 1/4" hex head screws.

**STEP 8:** Plug the stove into power outlet and begin start up procedures.



## IMPORTANT: PLEASE READ BEFORE INSTALLING NEW CONTROL BOARD

The new controller for your stove has a memory feature. Should you have a power outage or blip, the unit will come back on the setting that it was set to before.

This control is equipped with various functions. As a result, you need to check to make sure you are in the proper burn mode. Once your desired setting is reached, press the START button for operation.

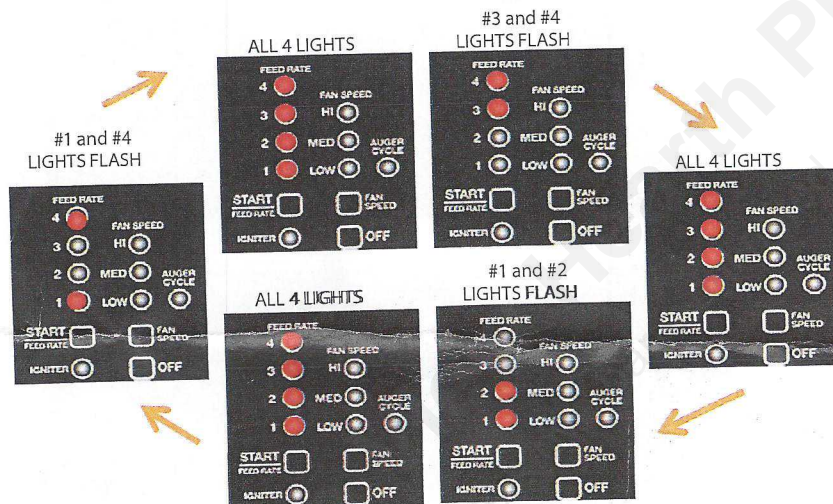
To confirm the mode, press and hold in the OFF button. The feed rate lights will cycle as seen below. When the desired mode flashes release the OFF button and press start.

### The 3 modes are as follows:

**HIGH/LOW THERMOSTAT MODE** - when off button is released after #3 and 4 lights flash

**ON/OFF THERMOSTAT MODE** - when off button is released after #1 and 2 lights flash

**MANUAL MODE** - when off button is released after #1 and 4 lights flash



### TRIM POTS (Fine tune adjustments)

**FUEL FEED** rates at the Lowest (#1 feed rate) and highest (#4 feed rate) settings can be set by adjusting the fine tune trim pots located on the control panel. To **raise fuel feed** turn the trim pot **counter clockwise** and to **lower the fuel feed** turn it **clockwise**.

**FAN (combustion) TRIM:** this trim may be used to raise or lower the amount of air moving through the burn grate for the cleanest burn, **ONLY** when the control is set on the **LOW FEED RATE (#1)**. Only adjust this after the air inlet damper has been set during the high feed rate (#4).

**NOTE:** When adjusting the trim pots use a small precision screwdriver. The trim pots do not make a full rotation. If using a metal screwdriver be gentle as the plastic trim pot slot can be damaged or stripped.

