

QUADRA-FIRE®

Scraper Rod Replacement Kit & New Brick Set Installation Mt. Vernon Stove

Part No: SCRAPER-MV

Included in Kit: (4) scraper rods, 2 for stoves with 11 tubes and 2 for stoves with 12 tubes, (5) wire loops, (12) 8-32 screws, (12) locking nuts, (1) 5/16 x 18 screw and (1) 5/16 flange nut and (1) Snap Disc, manual reset 200 degree, included in brick set.

Tools Needed: Phillips head screw driver, straight edge screw driver, Allen wrench, needle-nose pliers and Dremel cutting tool



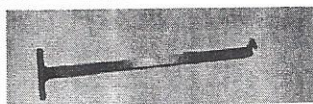
Figure 1 - Kit Contents & Tools Required

It is necessary to remove the brick set before you can replace the scraper rods. After replacing the scraper rods, install the new brick set included with the kit if the stove has not been previously upgraded. The brick set was revised on June 29, 2005. Please follow the instructions that pertain to your stove. **If you have already updated your brick set you will still need to replace the left side brick with the new one included in the kit.**

SNAP DISC REPLACEMENT: The #2 Snap Disc has been changed from 175 degrees to 200 degrees to improve performance. Install the 200 degree snap disc included with the kit.

REMOVING THE BRICK SET SERIAL NUMBER 1780563 AND LOWER

Use the special brick removal tool found in your owner's manual bag.



SAFETY WARNING

Cast iron is a very heavy material. All of the brick pieces and baffle are made of cast iron and therefore are heavy and awkward at times to maneuver. Clear and prepare your work area before you begin. You will be required to hold the top baffle in place with one hand while you remove and re-install the back cast brick with the other hand.

1. Allow the stove to cool completely.
2. Remove the door from the stove and vacuum out firebox.
3. Using a Phillips head screw driver remove 2 screws, 1 on the left side and 1 on the right, at bottom of firebox opening. **Figure 2.**
4. Using the brick removal tool, place it in hole in middle of right brick and pull straight towards the firepot. **Figure 3.**
5. Place your finger on the top front edge and work the brick from side to side until it comes out. **Figure 4.**

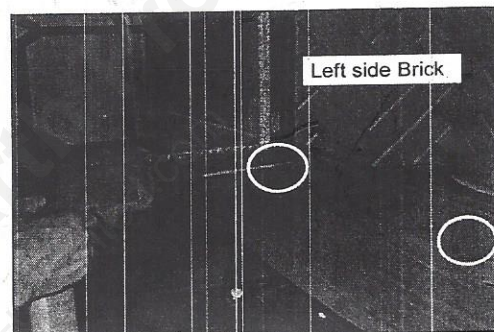


Figure 2

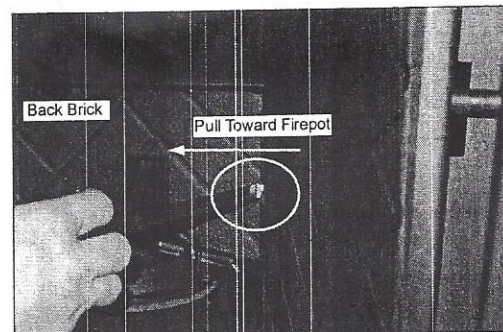


Figure 3

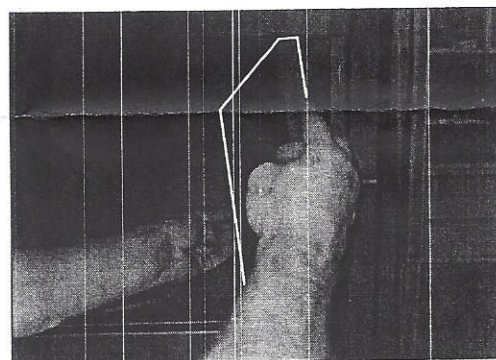


Figure 4

1445 North Highway
Colville, WA 99114

HEARTH & HOME
technologies

7014-103C January 10, 2007 Page 1 of 6

www.quadrafire.com

**REMOVING THE BRICK SET
SERIAL NUMBER 1780563 AND LOWER (Cont'd)**

6. Remove 2 screws from the back brick. If having difficulty removing the back brick, remove the 2 firepot bolts for extra clearance. **Figure 5.**
7. Place one hand on the top cast baffle to hold it in place while you remove the back cast brick with your other hand. Place your hand in the drop tube hole and tilt the back forward, then pull up and out. **Figure 6.**
DO NOT RELEASE PRESSURE ON THE TOP CAST BAFFLE WHILE YOU ARE SETTING ASIDE THE BACK CAST BRICK. IT CAN FALL AND POTENTIALLY INJURE YOU.
8. At this point the baffle is only held in place by the lip on the front flange and you. **Figure 7.**
9. Slowly bring the bottom of the baffle towards you keeping pressure on the top section. When the baffle is almost in a vertical position you can lower the baffle from the top lip and out of the firebox. **Figure 8.**
10. Remove the side bricks. **Figure 9.**
11. You will notice that behind the side bricks there are brackets that prevents the cast brick from going back any further and keeps it in position. **Figure 10.**

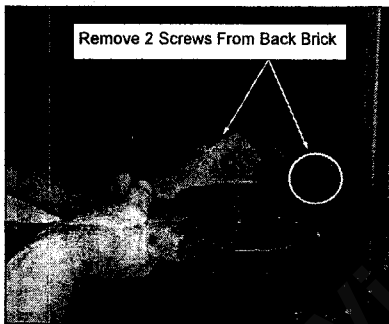


Figure 5

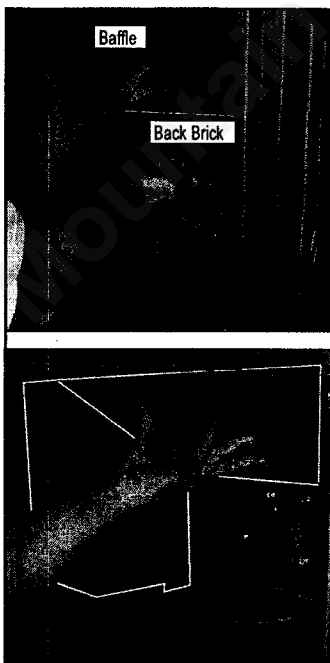


Figure 6

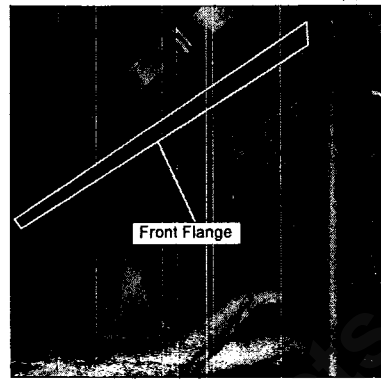


Figure 7

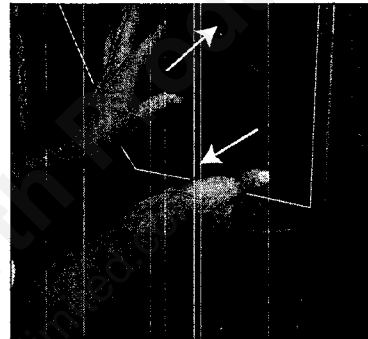


Figure 8

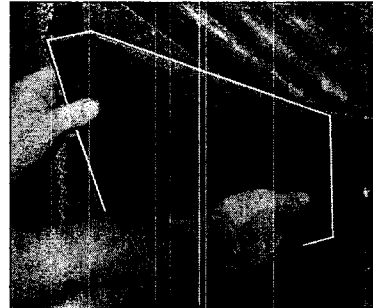


Figure 9

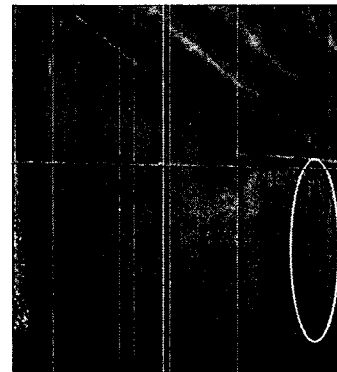


Figure 10

REMOVING THE BRICK SET SERIAL NUMBER 1780564 AND HIGHER

1. Allow the stove to completely cool down.
2. Remove the door from the stove and vacuum out the firebox.
3. Remove the right side brick first. Using an Allen wrench remove the fastener and remove the side brick. **Figure 11.** Hold the baffle with your hand while you remove the back brick and then remove the baffle by angling it through door opening. The left side brick does not have any fasteners, just lift out of stove. **Figure 12.**
4. Return the old scraper rod to the home position and re-vacuum the firebox.

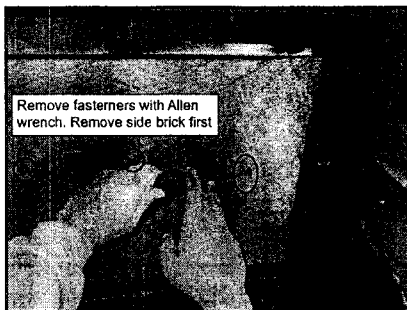


Figure 11



Figure 12

REMOVING OLD SCRAPER RODS

Using the Dremel cutting tool, cut the existing rod as close as possible to the scraper plate. This cut should be a clean cut with no jagged edges. Leave the old scraper plate in the stove. **Figure 13.**

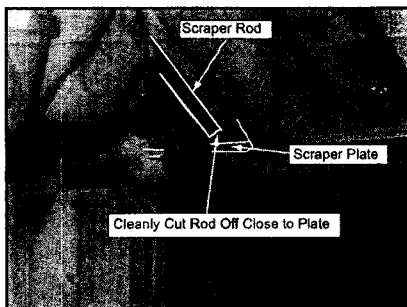


Figure 13

REPLACING THE SCRAPER RODS

NOTE: Only replace the scraper rods on the left side unless both sides are sticking. This will save you time.

1. There are 4 scraper rods included in the kit. Depending on how many tubes are in your stove will depend on which 2 scraper rods you need. One set is for stoves that have 11 heat exchanger tubes and one set is for stoves with 12 tubes. Discard the set you do not need. **Figure 14.**
2. Insert the bend end of the new rod into the guide hole at the top of the firebox opening. It can stay suspended there while placing the wire loops over the heat exchanger tubes. **Figure 15.**

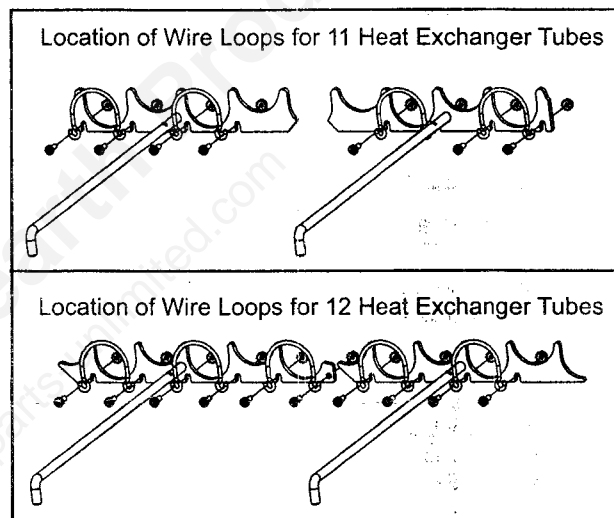


Figure 14

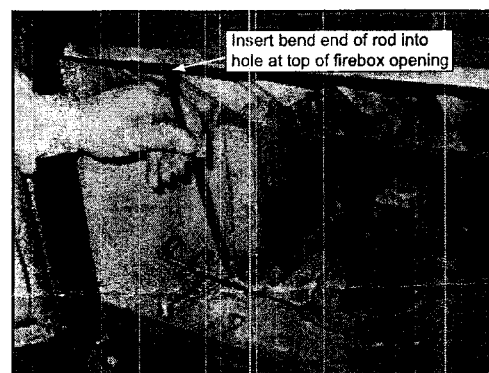


Figure 15

REPLACING THE SCRAPER RODS (Cont'd)

- Place the wire loops over the heat exchanger tubes by starting underneath and then swing it over the top of the tube as shown in **Figures 16 & 17**.
- Swing the scraper rod up and into place around the tubes. If installing on a stove that has 12 tubes, the loop will be tight and you will have to put extra pressure on the needle nose pliers to pull it through. After the loop is over the tube, use a Phillips head screw driver and needle nose pliers to loosely attach the wire loops to the scraper rods using the 8-32 screws and locking nuts. After all screws and nuts have been attached, tighten them all. **Figure 17**.
- The wire loops must have the same gap all the way around the tube or the scraper rods will hang up when trying to clean the tube. After the rods are secured in the stove, check to make sure that they slide freely. If not, make adjustments to the wire loops by using a straight edge screw driver between the tube and wire loop and pry it from side to side until the loop is an equal distance from the tube all the way around. Adjustments may be needed on only one or all of the wire loops. **Figures 19, 20 & 21**.
- See **Figures 22 & 23** to ensure the bottom edge of the scraper plate is in the correct position.

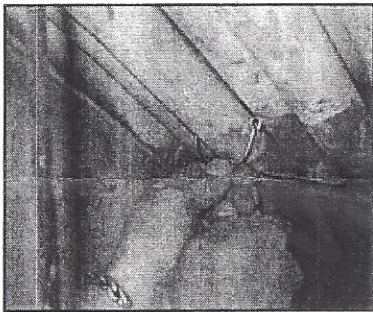


Figure 16

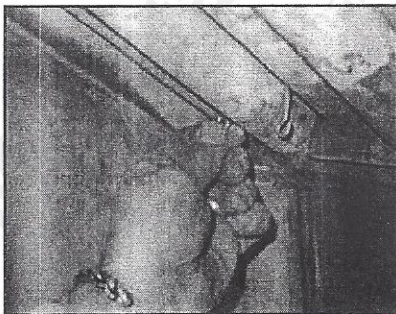


Figure 17

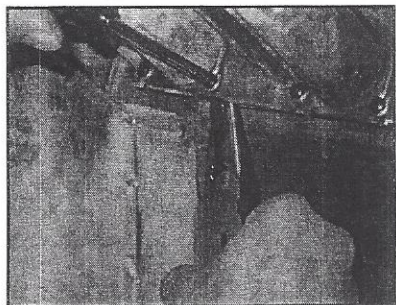


Figure 18

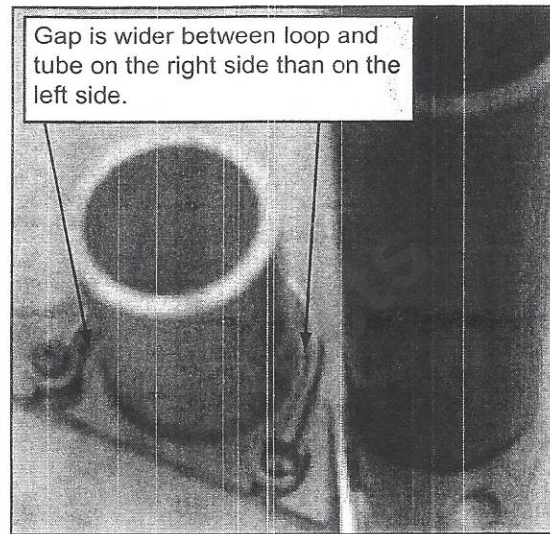


Figure 19

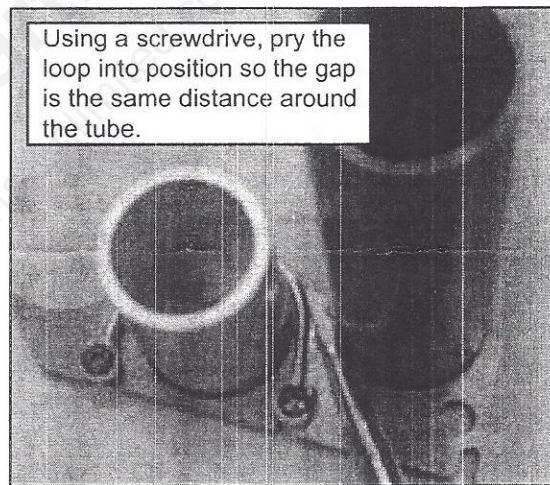


Figure 20

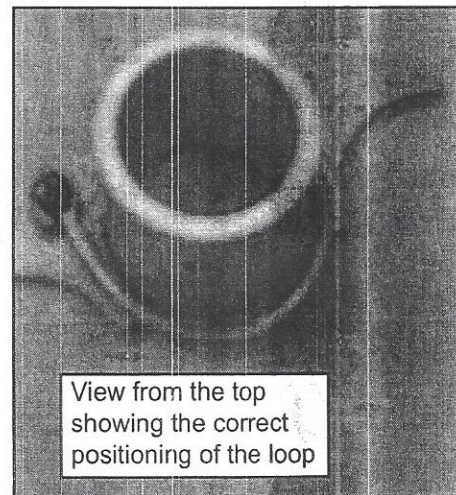


Figure 21

REPLACING THE SCRAPER RODS (Cont'd)

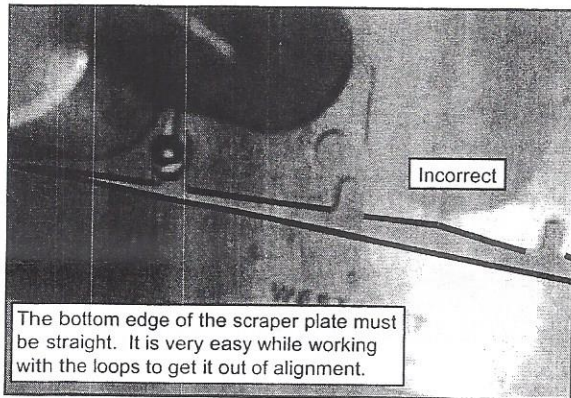


Figure 22

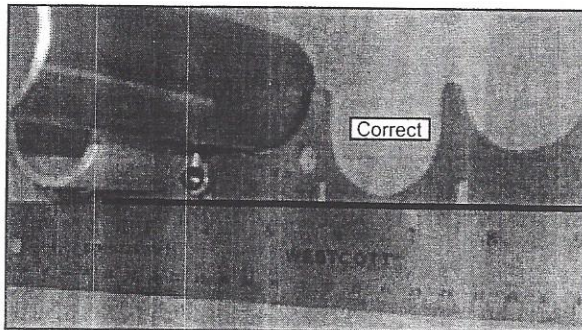


Figure 23

REPLACING / INSTALLING THE BRICK SET

1. The new brick set must be installed in a certain order. Place the left side brick in first. There are no fasteners for the left brick, it is held in place by pressure. **Figure 19.**
2. The back brick goes in second. Secure the back with the 2 fasteners removed previously. **Figure 20.**
3. Install the right side brick and secure with the fastener removed earlier. If you are just upgrading your brick set, use the 5/16 x 18 filler screw and 5/16 flange nut to fill the hole in the right brick. **Figure 21.**
4. The baffle has a bolted on bracket at the bottom. The bracket fits over the lip of the back brick. Hold the baffle in place with your hand. Using a 5/32 Allen wrench to tighten the shoulder bolt by turning clockwise as shown in **Figures 22 and 23.**
5. Re-install the door.



Figure 24

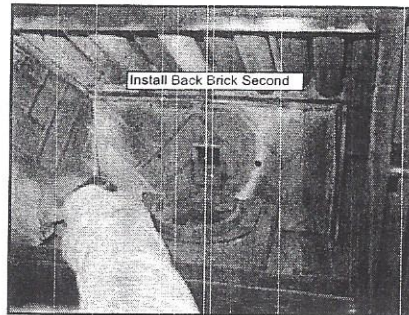


Figure 25

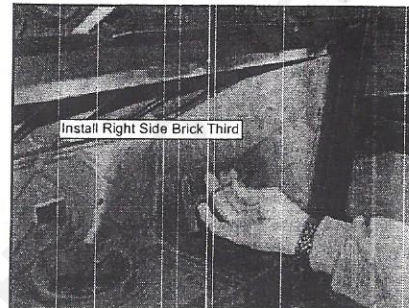


Figure 26

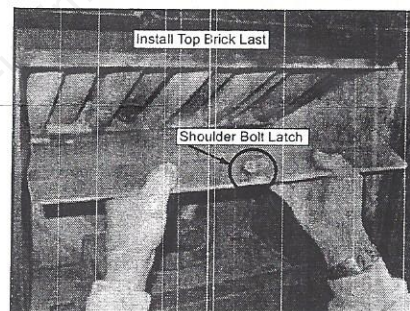


Figure 27

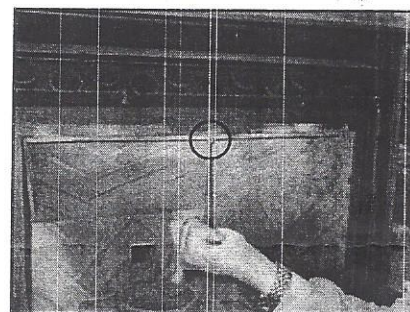


Figure 28

REPLACING / INSTALLING THE BRICK SET

1. The new brick set must be installed in a certain order. Place the left side brick in first. There are no fasteners for the left brick, it is held in place by pressure. **Figure 19.**
2. The back brick goes in second. Secure the back with the 2 fasteners removed previously. **Figure 20.**
3. Install the right side brick and secure with the fastener removed earlier. If you are just upgrading your brick set, use the 5/16 x 18 filler screw and 5/16 flange nut to fill the hole in the right brick. **Figure 21.**
4. The baffle has a bolted on bracket at the bottom. The bracket fits over the lip of the back brick. Hold the baffle in place with your hand. Use a 5/32 Allen wrench to tighten the shoulder bolt by turning clockwise as shown in **Figures 22 and 23.**
5. Re-install the door.

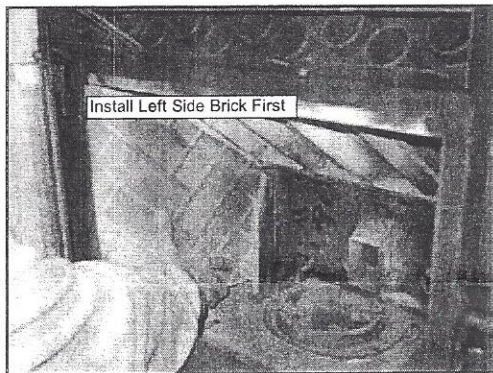


Figure 19

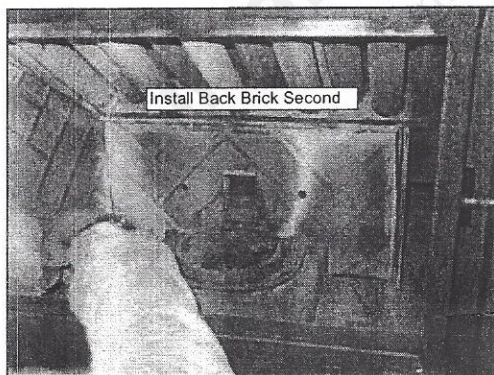


Figure 20

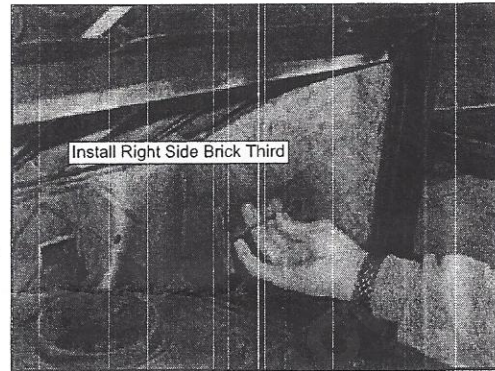


Figure 21

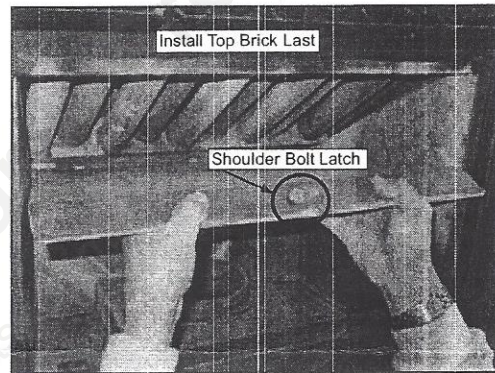


Figure 22

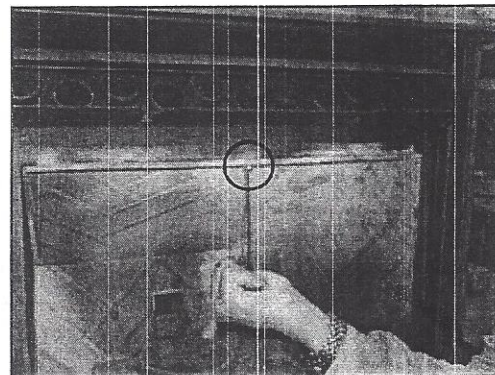


Figure 23