

5448/5440

Owners Manual

PEDESTAL & INSERT PELLET HEATER

ASSEMBLY

INSTALLATION

OPERATION

REPAIR PARTS

CAUTION

READ ALL INSTRUCTIONS
CAREFULLY BEFORE START-
ING THE INSTALLATION OR
OPERATING THE HEATER

WARNING

IMPROPER INSTALLATION
MAY VOID YOUR WARRANTY
SAVE THIS MANUAL FOR
FUTURE REFERENCES

UNITED STATES STOVE COMPANY

227 Industrial Park Road
P.O. Box 151
South Pittsburg, TN 37380
(615) 837-2100



85026A 7/84

Congratulations!

You have purchased one of America's finest pellet burning heaters, from United States Stove Company, North America's oldest manufacturer of solid fuel appliances.

WELCOME - to the new world of heating with pellets; by doing so, you are helping to conserve America's energy. Pellets are made primarily from sawdust, an all too often wasted by-product from timber operations, sawmills and furniture companies.

Not only are you using a fuel previously going to waste and often occupying space in landfills, you're also helping the environment more directly, as pellets burn clean with very little ash, while producing an incredible amount of heat in BTU's per pound.

Please take the time to thoroughly read this manual and familiarize yourself with the instructions before installing or burning your PELLET heater. Remember, this is not a WOOD STOVE. It is a PELLET STOVE and differs in installation, operation and maintenance.

TOOLS

Pencil
6 Foot Folding Rule or Tape
Tin Snips
Drill, Hand or Electric
1/8" Dia. Drill Bit (for sheet metal screws)
Screw Driver (blade type or phillips #2)
Gloves
Sabre Saw 5/16" Nut Driver or Socket with Ratchet
Safety Glasses

MATERIALS

3" UL Listed Pell Vent Chimney (see "Installation")
RTV 500 Silicone Sealant
Proper Size Floor/Wall Protector

TABLE OF CONTENTS

<i>Safety Warnings and Precautions</i>	4
<i>Pre-Installation Instructions</i>	7
<i>Installation Instructions</i>	10
<i>Operating Instructions</i>	16
<i>Cleaning and Maintenance Instructions</i>	17
<i>Trouble Shooting Guide</i>	19
<i>Test Check List</i>	25
<i>Normal Operational Noises</i>	26
<i>Pellet Heater Options</i>	26
<i>Repair Parts List</i>	27
<i>Wiring Diagram</i>	31

Safety Warnings and Precautions

Do not attempt to repair, replace or modify any part of your Pellet Heater unless explicit instructions are given in this manual. The circuit board (and/or control panel) contains no parts serviceable by the consumer.

SAFETY NOTICE: If this heater is not properly installed, a house fire may result. For your safety, follow the installation directions closely. Contact local building or fire officials about restrictions and installation inspection requirements in your area.

SAFETY / INSTALLATION CAUTIONS:

- 1) The floor upon which your Pellet Heater is installed must be non-combustible or otherwise protected by a non-combustible floor protector. Follow the instructions in this manual for size and type of floor protection required.
- 2) When installing this stove in conjunction with a masonry chimney, be sure the chimney is in good condition and meets the minimum standards of the National Fire Protection Association (NFPA) Standard 211. However, we do not recommend the Pellet Heater be installed with a masonry chimney.
- 3) Special methods are required when passing a chimney or connector through a wall or ceiling. Follow the chimney manufacturer's instructions and local building codes.
- 4) Stove surfaces become hot during use. Keep children away from stove during operation.
- 5) Repair and replacement of any part of this stove must be done by a trained technician, unless specific instructions are given in this manual.

RULES FOR SAFE INSTALLATION AND OPERATION:

IMPORTANT! - Read these rules and the instructions carefully. Failure to follow them will cause a hazard that could result in death, serious bodily injury and/or property damage.

Check your local codes. The installation must comply with their rulings.

DO NOT INSTALL this stove in a mobile home, trailer or manufactured home **WITHOUT** the optional 54MHK.

Connect this stove only to the proper chimney (UL listed PL pell vent), which is stainless on the inside and either galvanized or painted metal on the outside. It is of double-wall construction. You may also connect your stove to an approved UL listed Class A all-fuel chimney or to a recently inspected LINED MASONRY CHIMNEY. If you plan to use a masonry chimney, you should install either an approved stainless steel flexible duct or the above mentioned PL pell vent in the chimney itself extending from the chimney breach (opening) up the full length of the chimney to the chimney top. Connections between the stove and the chimney should also be PL pell vent.

Do not connect this stove to an aluminum Type B gas vent. This is not safe and is prohibited by the National Fire Protection Association Code.

If you are using a masonry chimney as described above, make sure it is in good repair and of sound construction and has been inspected by the fire department or a qualified Chimney Sweep. Remember, we do not recommend the Pellet Heater be installed in conjunction with a masonry chimney.

Inspect the chimney connector and the chimney before and frequently during the heating season for any deposit of creosote or ash which should be removed.

Provide air for combustion into the room where the stove is located. If the intake is not in the same room, air must have free access to the room.

Cast iron parts, including the fire pot and feed door, must be "seasoned" to avoid cracking. Do this by building small fires only for the first hour of use.

To prevent injury, do not allow anyone to use this stove who is not familiar with the correct operation.

Keep your ash pit section free of excess ashes.

Disposal of Ashes - Place ashes in a metal container with a tight fitting lid. Keep the closed container on a non-combustible floor or on the ground, well away from all combustible materials. Keep the ashes in the closed container until all cinders have thoroughly cooled. The ashes may be buried in the ground, or, if you're into organic gardening, they do make an excellent fertilizer (potash).

The special paints used on your stove may give off some smoke while they're curing during the first few fires.

This heater should be burn-tested outside in a well ventilated area for at least one hour, as per the operating instructions. Build small fires at first. The metal used in the construction of the interior of the stove has a light coating of oil. This could give off smoke and/or odors from the stove when it is burned for the first time. Once this burn-off has occurred, it should not reoccur.

CARING FOR PAINTED PARTS - This stove has an enamel painted outside jacket. This paint is durable, but will not stand rough handling or abuse. When installing the stove, use care in handling. Clean with soap and warm water only, and then only when the stove is cool to the touch. Do not use any acids or scouring soap, as these wear and dull the finish. DISCOLORATION WILL OCCUR IF THE STOVE IS OVERFIRED. FOLLOW THE OPERATING INSTRUCTIONS CAREFULLY.

DURING OPERATION THE CAST IRON FRAMED CERAMIC GLASS DOOR AND PELLET HOPPER LID MUST BE CLOSED, NOT ONLY FOR SAFETY REASONS, BUT ALSO FOR PERFORMANCE.

For further information on using your stove safely, obtain a copy of the NFPA publication (NFPA 211). Their address is NFPA, Battery March Park, Quincy, Massachusetts 02269.

GLASS BREAKAGE: Should the glass break during operation, turn the switch to the OFF position. This will enable the stove to cool more rapidly. After the stove and glass are cool, the glass may be removed, following the directions on page 20. In the meantime, do not leave the stove unattended, as there will be a spark hazard until the fire is completely out. Never operate the Pellet Heater with a broken ceramic glass.

INSTALLATION PRECAUTIONS:

Your unit should be installed by a qualified installer. Improper installation could void your warranty.

The pellet heater's exhaust system works with a positive combustion chamber and a somewhat lower position chimney pressure. Therefore, it is imperative that installation of the exhaust system be correctly done. Do not connect this appliance to a chimney flue serving another appliance. Do not use single-wall pipe to vent exhaust from this heater, or as a connector to a chimney. The only authorized exhaust vent pipe designed for use with this appliance is 3" UL listed, Type PL pellet vent pipe specifically designed for use with pellet burning appliances. All chimney joints should be sealed with RTV silicone sealant (RTV 500). United States Stove Company has no control over the installation of your stove, and thereby grants no warranty, implied or stated, for the installation or maintenance of your stove, and assumes no responsibility for any consequential damages.

DETAILED SAFETY PRECAUTIONS:

FUEL: The Pellet Heater is designed and approved to burn rated APFI (American Pellet Fuel Industry) Standard 1/4" pelletized wood fuel. Performance will suffer if non-standard pellets are used. Burning solid fuel, other than in pellet form, is not permitted and will void all warranties and the safety listing of the stove.

Do not obstruct the free flow of air through the open vents of this heater.

Do not allow children to play around the heater without adult supervision. Do not touch the heater while it is in operation, as serious burns may result. Do not allow anyone to operate the heater who is not familiar with the operating instructions.

Before attempting any maintenance procedures, insure the pellet heater has cooled for several hours.

Your power supply cord must be routed to avoid contact with any hot or sharp surfaces of the heater. The power supply cord should be connected to a standard 120 volt, 60 hz. electrical outlet (or a SEALED battery back up system). If the receptacle you plan to use has no provisions for the ground prong, that circuit should be rewired with proper grounding. Do not remove the grounding prong from the power cord, and never use a grounding adaptor plug. It is quite possible the receptacle to which that adaptor is screwed into is itself not grounded. If this appliance is not properly grounded, a serious electrical hazard will result.

Before attempting any cleaning operations or before removing any of the access panels, insure the power cord is disconnected from its electrical source.

WARNING
Switching the control to OFF does not disable all electrical components and circuitry.
YOU MUST UNPLUG THE APPLIANCE!

Keep fuel and other combustible materials such as furniture, clothing, curtains, doors, louvers, etc. away from the heater.

Combustible materials must not be stored or placed within the clearances to combustibles as illustrated in the "Installation" instructions.

CAUTION: Do not use flammable liquids to start or freshen up a fire in this stove.

KEEP FOREIGN OBJECTS OUT OF THE HOPPER! It is very important to keep children away from the hopper, as they may accidentally drop in their toys. A child could be seriously injured in reaching for a toy if his or her hand became caught by the auger. Serious damage to the auger could result from foreign objects such as a toy, etc.

Only approved fire starters may be used to start the fire. Never attempt to start your pellet heater with gasoline, kerosene or other flammable liquids. Do not store or use gasoline or other flammable vapors, including paint or aerosols or flammable liquids in the immediate vicinity of this heater.

Before installation can be made in a mobile home or modular manufactured home, the pellet heater must be grounded either to the steel chassis of the home or to any other suitable ground (see National Electric Code) that is of good integrity. Further, the unit must be bolted to the floor of a mobile home or manufactured modular home.

Do not install in a bedroom or sleeping quarters.

Wait several hours for the pellet heater to cool before carrying out any of the prescribed maintenance procedures.

Never place (or allow to be placed) paper, wood, furniture, drapes or other combustibles near the heater.

Exceptional care must be taken to maintain the minimum clearances to combustibles as specified herein, or, as per your local building codes or fire codes, and following the safety listing label on the back of this heater.

CAUTION
WHEN INSTALLING THIS HEATER IN A MOBILE HOME, CARE MUST BE TAKEN
NOT TO INTERFERE WITH THE STRUCTURAL INTEGRITY OF THE MOBILE HOME.
THE FLOOR, WALL, CEILING AND/OR ROOF MUST BE MAINTAINED.

WARNING: Never use an unsealed type of battery nor operate the appliance on a battery without a 12 volt 4 amp in-line fuse on the positive lead (optional accessory).

When the heater is not used for an extended period, such as during the summer months, the 120 volt AC and/ or 12 volt DC battery SHOULD be disconnected to extend the life of all electrical components.

When venting into the chimney of a listed factory built fireplace (zero clearance fireplace), it is necessary to use a stainless steel chimney liner, either flexible or rigid; or UL listed PL pell vent.

Pre-Installation Instructions

PEDESTAL PELLETT HEATER:

1. Remove all packaging materials, being careful to not damage the printed circuit board control panel.
2. Inspect the unit for damage and for any obviously loose or missing parts.
3. Remove all components from either the hopper or from behind the glass door (firebox), including the louvered grill.
4. In order to adequately protect the 12 volt couplers (located in the lower left rear of your pellet heater) from damage during shipment and handling, the module has been moved forward from its operational position. In order to relocate, please perform the following operation.
NOTE: Some models have the power module installed at the factory in the proper position for operation. If yours is so installed, ignore the next five steps.

INSURE THIS APPLIANCE IS UNPLUGGED AND OTHERWISE REMOVED FROM ANY POWER SOURCE, EITHER 110 VOLT AC OR 12 VOLT DC

- a) Refer to the below diagram. (FIG. 1)
- b) Locate the mounting screw on the bottom left corner of the heater.
- c) Remove the screw with either a 1/4" hex head driver or a slotted screw driver. Retain the screw.
- d) After the mounting screw has been removed, pull the power module to the rear of the stove. To properly locate, it may be necessary to reach in with your hand (**WATCH OUT FOR SHARP OBJECTS**) and position the mounting plate over the mounting screw location and in the operational position as shown.
- e) Re-attach sheet metal screw and secure. Do not overtighten.

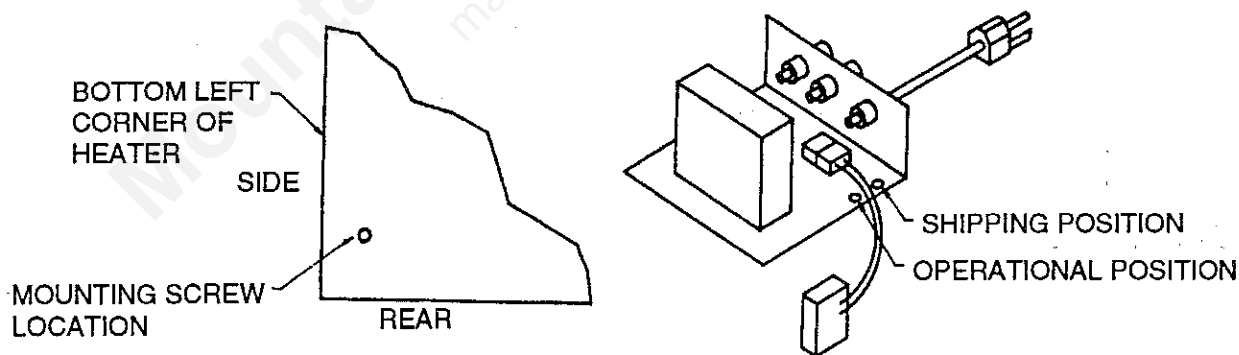


FIG. 1

5. Connect and secure the control board (circuit board) using the following steps.

WARNING: DO NOT CONNECT POWER DURING ELECTRICAL HOOK-UP.

- a) Remove the control panel and mounting hardware from the bubble-wrap pack.
- b) Connect the one-way Molex plug (located on the wiring harness inside the stove) to the rear of the control panel. Do not pull on the wiring harness.

c) Connect the .250 female terminal (attached to a red wire inside the stove) to the .250 terminal spade on there on the rear of the control panel. Do not pull on the wires inside the stove.

NOTE: If you're not using the optional thermostat, then skip steps (d-f) and go directly to step (g). Use only the low voltage thermostat provided in the option kit (54RTO) or its equivalent.

d) Position the thermostat on a wall 10-20 feet away from the stove.

e) Route the thermostat wire into the stove where the AC power cord enters and pull it through to the control panel cut-out.

f) Remove the factory installed jumper on the thermostat terminals and connect the thermostat wires to the terminals.

g) Locate the control panel into the side cut-out and secure with four No. 6 x 1/4" phillips screws provided. Do not overtighten.

h) Your pellet heater is now ready for operation.

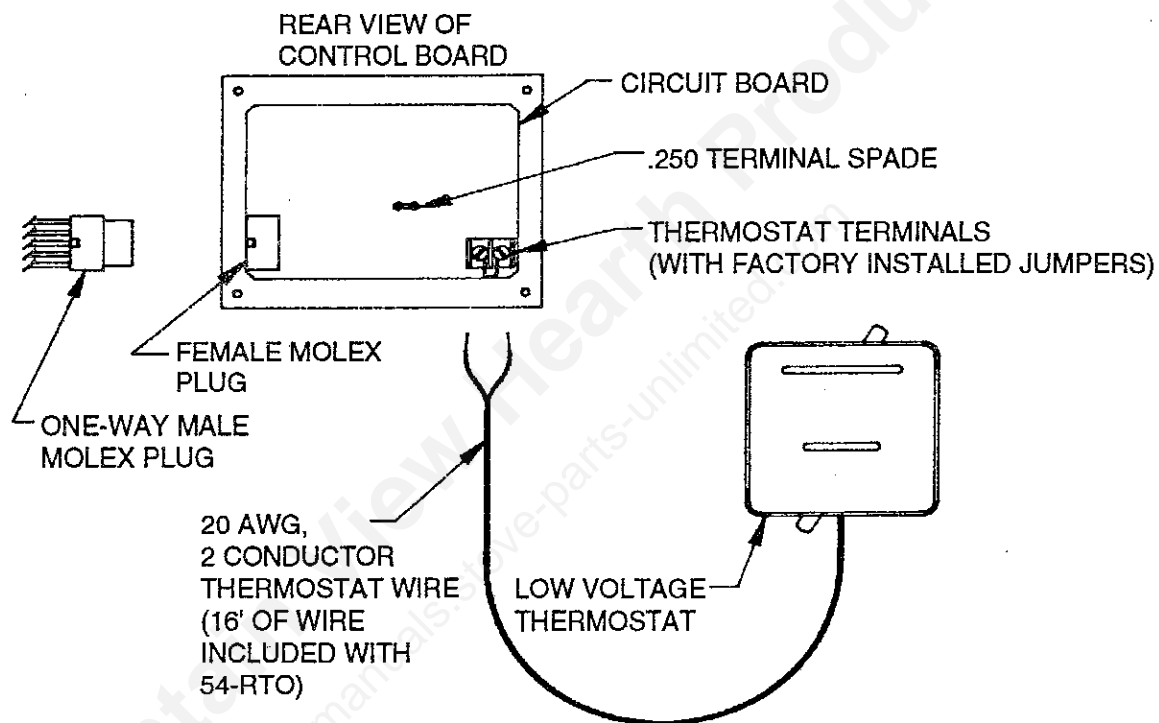


FIG. 2

INSERT PELLETT HEATER:

1. Remove all packaging material, being careful to not damage the printed circuit board control panel.
2. Inspect the unit for damage and for any obviously loose or missing parts.
3. Remove all components from behind the glass door (firebox).
4. Attach the hopper feed door (a) and feed housing (b) to the pellet heater by using the following steps:
 - A. Cut the magnetic tape into two 4" long sections and one 14-1/2" section. Peel the paper off the back of the magnetic tape and apply as shown in Fig. 3.
 - B. Attach the hopper feed door by using the six phillips head bolts and nuts supplied in the parts bag as shown in Fig. 3.
 - C. Secure the brass knob to the door by using the supplied machine screw.

D. Set the hopper door perpendicular to the pellet heater top and slide the feed door housing down over the angled sides of the hopper feed door. Fasten the feed housing to the top of the pellet heater using nine phillips head sheet metal screws. See Fig. 3.

5. Assemble the insert shroud by using the following steps (see Fig. 4):

A. Fasten the left and right side of the shroud to the shroud top by using four phillips head bolts and nuts.

B. Next apply the trim to the shroud. Peel the paper from the back of the trim to expose the adhesive, then firmly attach to the outside top and sides of the shroud. (Apply the side trim first, keeping the bottom of the trim level with the bottom of the shroud, then apply the top section.)

C. Attach power supply cord to the shroud by inserting the pigtail through the hole located below the control board location. Push through firmly until the molded grommet snaps securely in place

FIG. 3

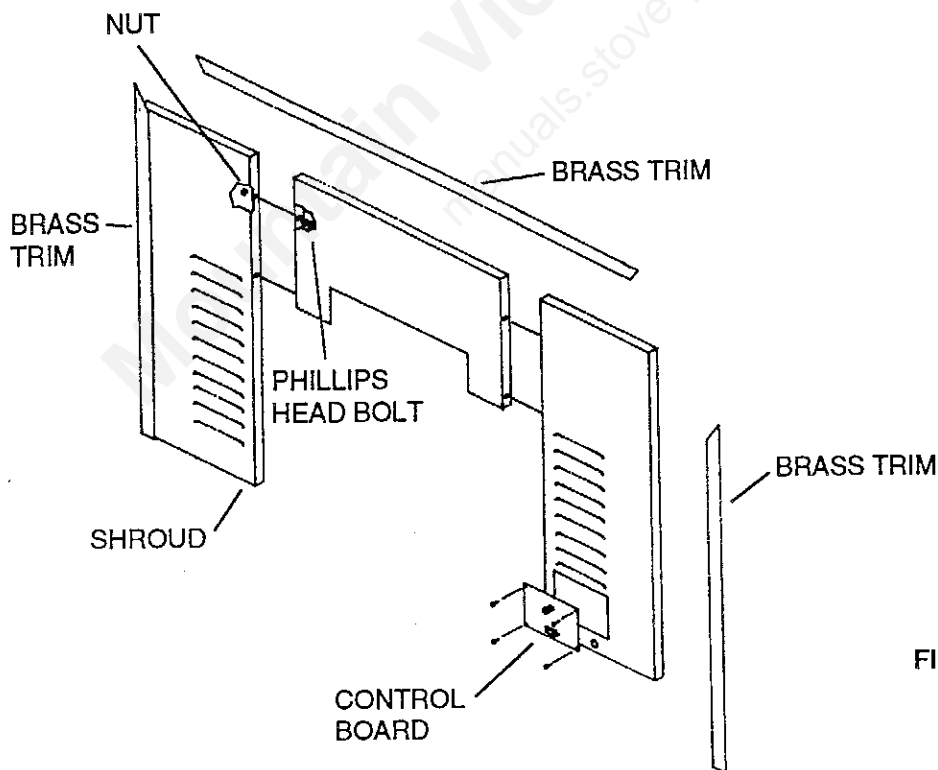
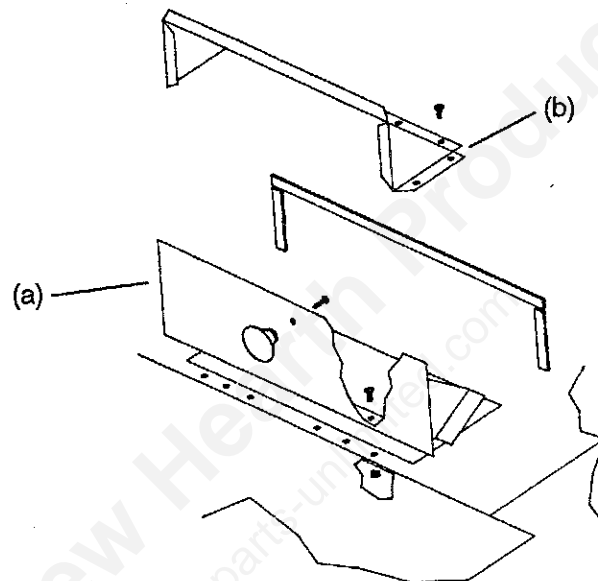


FIG. 4

Installation Instructions

The following are general instructions for installing this stove. The vent pipe manufacturer's instructions should be followed for the vent pipe being used.

Before drilling or cutting holes, select the location of the stove.

Determine where the ceiling rafters, wall studs or floor joists are located before making any large holes, as the stove may have to be moved.

Be careful not to drill or cut into any water lines or electrical wiring as water damage or electrical fire may result.

Upon determining the best location for your new stove, maintaining at least the minimum allowable clearances, place the stove on the non-combustible floor protector and line up the plumb bob with the hole in the ceiling or wall.

Enlarge the holes as required for installation of the listed PL pellet vent pipe and components per pipe manufacturer's instructions.

Combustion air may be required. The duct may pass through the wall or floor to obtain fresh air from outdoors or from a vented crawl space.

It is recommended that all joints in the PL pellet vent pipe are sealed to insure that joints are airtight.

Secure the vent pipe to the flue collar with screws or steel pop rivets.

It is recommended that the horizontal installation of the PL pellet vent pipe downslope $1/4"$ in a 12" run with a maximum run of 3'.

INSERT DIMENSIONS & MINIMUM CLEARANCES

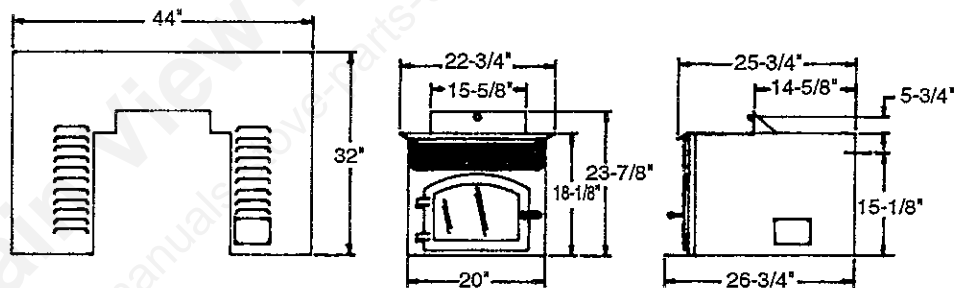
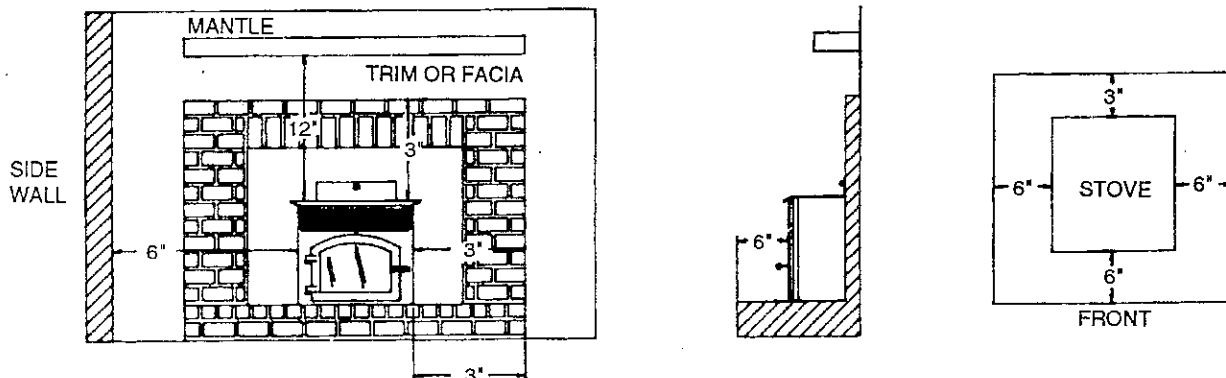


FIG. 5



PEDESTAL DIMENSIONS & MINIMUM CLEARANCES

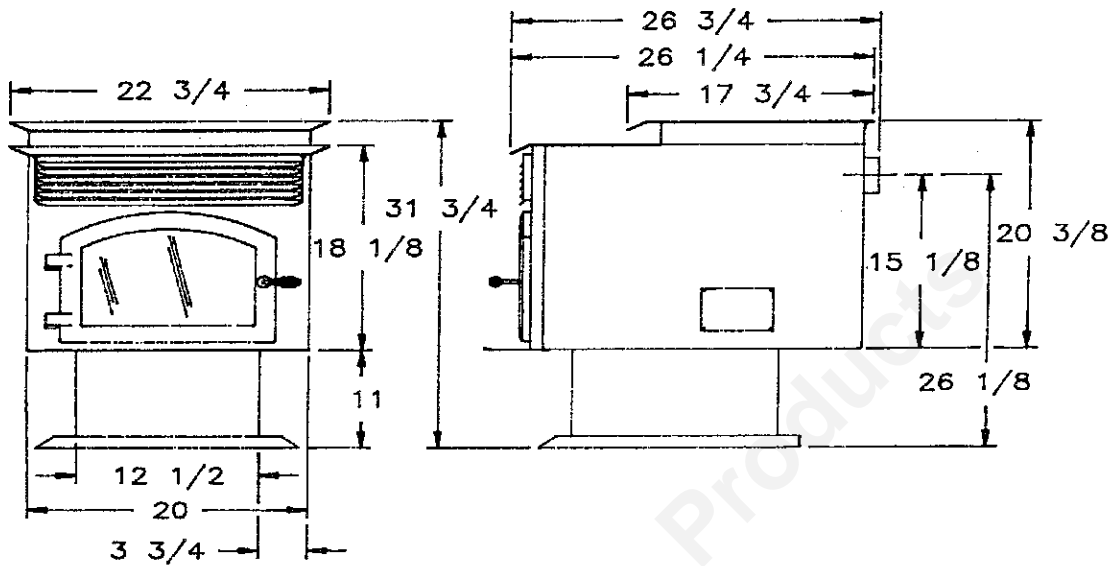
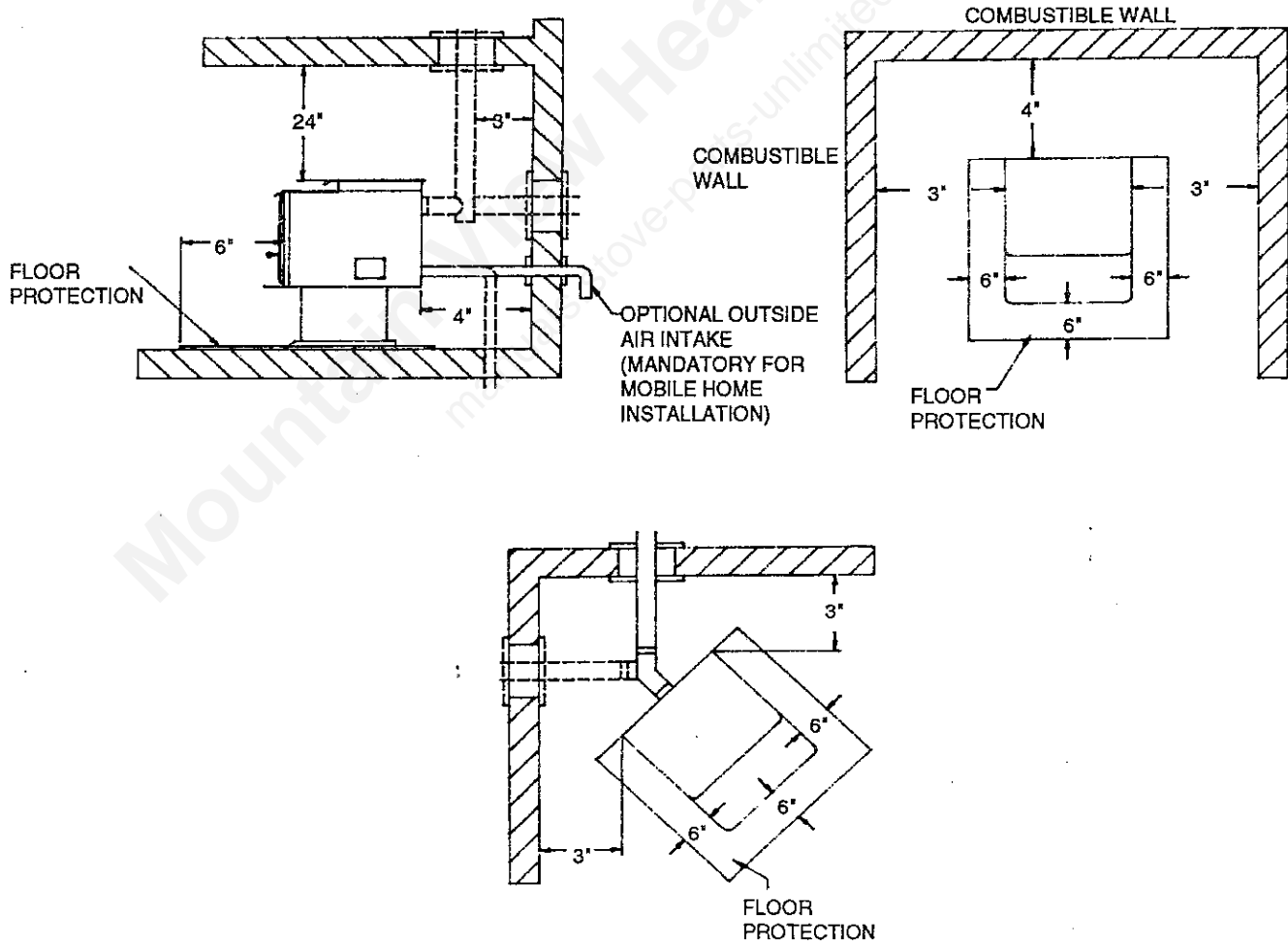


FIG.6



PEDESTAL - VERTICAL VENT PIPE INSTALLATION

There are four vertical vent pipe sizes - 3", 4", 6" and 8". All pipe sizes work equally well in a vertical installation, but 6" or 8" vent pipe connected directly to the stove will release more back pressure, thereby reducing the efficiency of the stove. It is ideal to start with a standard 3" pellet vent and increase the diameter AFTER a vertical rise of approximately 3 feet. For vertical runs in excess of 12 vertical feet, you should convert your system to a 4" PL UL Listed pell vent by using a 3" to 4" increaser.

Where installations will be made in locations above 2000 feet, it is recommended that your pellet heater be installed with a 4" pell vent. At elevations above 3000 feet, it is mandatory that a 4" pell vent be used for your installation.

The most common problem associated with vertical venting is the spark-arrestor screens used in some venting caps. Condensation on the screen will collect ash and cause a blockage of the flue gases, creating a poor burn. Overall, however, vertical venting is the most efficient and trouble-free method. (See FIG. 7)

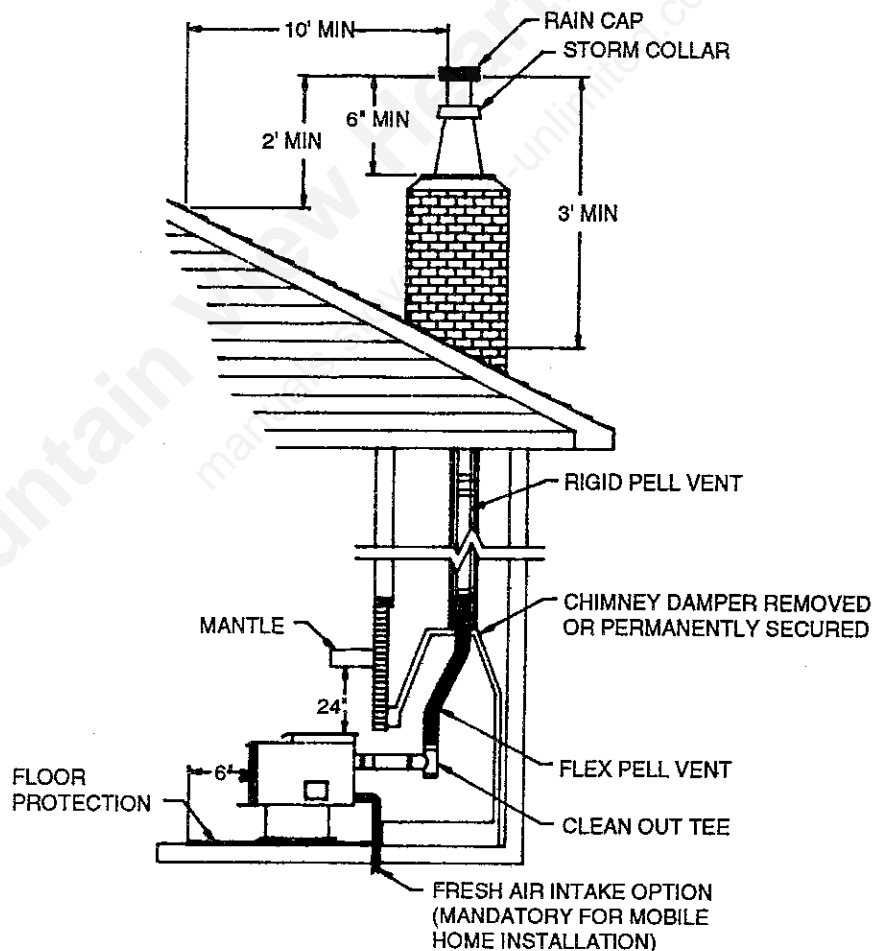


FIG. 7

INSERT - VERTICAL VENT PIPE INSTALLATION

There are four vertical vent pipe sizes - 3", 4", 6" and 8". All pipe sizes work equally well in a vertical installation, but 6" or 8" vent pipe connected directly to the stove will release more back pressure, thereby reducing the efficiency of the stove. It is ideal to start with a standard 3" pellet vent and increase the diameter AFTER a vertical rise of approximately 3 feet. For vertical runs in excess of 12 vertical feet, you should convert your system to a 4" PL UL Listed pell vent by using a 3" to 4" increaser.

Where installations will be made in locations above 2000 feet, it is recommended that your pellet heater be installed with a 4" pell vent. At elevations above 3000 feet, it is mandatory that a 4" pell vent be used for your installation.

The most common problem associated with vertical venting is the spark-arrestor screens used in some venting caps. Condensation on the screen will collect ash and cause a blockage of the flue gases, creating a poor burn. Overall, however, vertical venting is the most efficient and trouble-free method. (See FIG. 8)

When installing the insert, DO NOT set the pellet heater completely in position. Allow enough room so that the shroud can be slid down over the pellet heater, between the pellet heater firebox top and the feed housing. (You must open the hopper feed door in order to do this.) When the shroud is in place, carefully move the insert back into the opening until the shroud is resting against the fascia.

Connect the power supply cord to the pigtail coming from the heater, matching the appropriate colors (white to white, black to black, and green to green). Then connect the control board using the instructions on page 7, step #5.

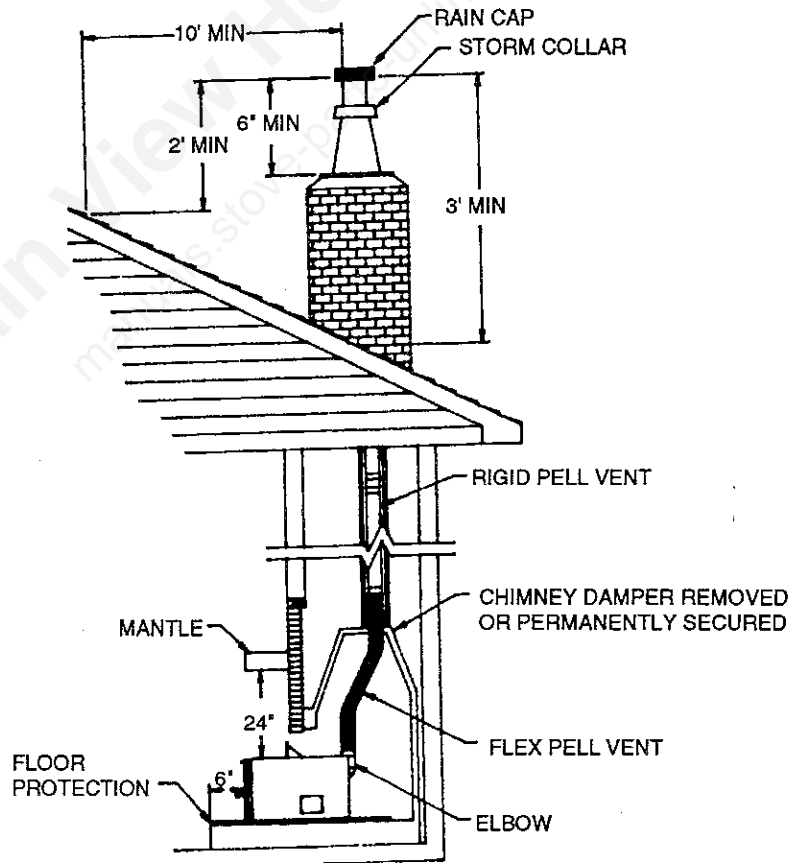


FIG. 8

DIRECT AIR ACCESS KIT INSTALLATION - 54DAAK

WARNING
DO NOT INSTALL THIS APPLIANCE IN A SLEEPING ROOM.
DO NOT ALTER THE STRUCTURAL INTEGRITY OF THE MOBILE HOME
FLOOR, WALL, CEILING, OR ROOF.

- A. See section on venting installation in this manual.
- B. When installed in a mobile home, this appliance must be grounded to the steel chassis of the frame and bolted to the floor in compliance with and according to H.U.D. requirements. Unless not required by local authorities.
- C. Outside air must be provided. (See FIG. 9)
 1. Outside air must be directly connected to the appliance as shown.
 2. Outside air may be taken from a vented crawl space.
 3. Outside air may not be taken from an attic, garage, or other enclosed space within the building.
- D. It is recommended that a flexible, 2" diameter hose or tubing is used.
- E. Bolt the stove to the floor through the hole provided in the pedestal base using a bolt or lag screw.
- F. Ground the stove to the steel frame of the mobile home using a 12 AWG or larger diameter wire.

KEY	DESCRIPTION	QTY.
A	MOUNTING FLANGE ASSY.	1
B	#10 X 1/2 SCREW	3
C	FLEXIBLE METAL HOSE	1
D	2" HOSE CLAMP	1
E	WALL FLANGE	2
F	#8 X 1/2 WOOD SCREW	4
G	1/4-20 X 4 BOLT	1
H	1/4 FLATWASHER	2
I	1/4 KEP NUT	1
J	GROUND WIRE ASSY.	1

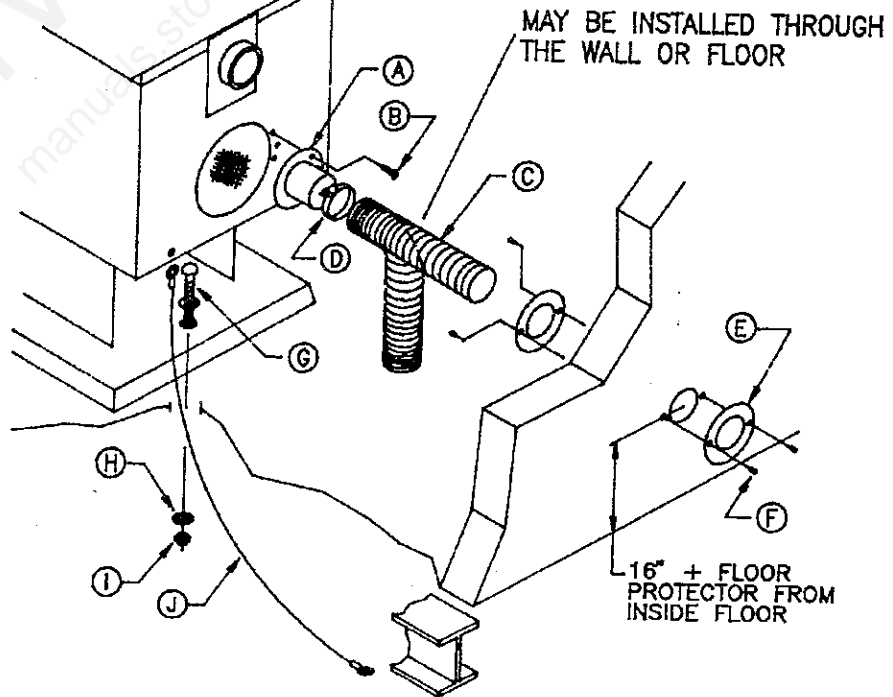


FIG. 9

12 VOLT DC KIT INSTALLATION - 54DCK

Your pellet heater is designed to operate on a 12 volt DC battery for extended back-up periods. (See FIG. 11) This system may also be used in conjunction with 12 volt solar systems. When using with a solar panel, refer to the wiring diagram in this manual. (See FIG. 10)

WARNING
THE STRUCTURAL INTEGRITY OF THE HOME MUST BE MAINTAINED

12 VOLT SYSTEM SPECIFICATIONS		
Battery Type	Battery Hook-Up	Battery Charger
a) Sealed Gel Cell Batteries Are The ONLY Type Battery Approved For INDOOR Use By Underwriters Laboratories And Are Specifically Recommended. b) Automotive Or Marine Type Sealed Batteries May Be Used When Located Outside The Structure Being Heated.	We Strongly Recommend Our 54DCK For This Purpose. Otherwise, You Must Have An 18 AWG Stranded Wire Or Larger (And Polarized) For Connecting The Stove To The Back-Up Battery. Also, A 4-Amp In-line Fast-Blow Fuse Should Be Used On The Positive Lead Connecting The Battery To The Stove.	The Charging System On A Control Board Works On A Continuous 120-Milli-Amp Trickle Charge, And Is Used To Maintain The Battery At Full Capacity, Or To Return The Battery To Full Capacity After Usage. The Charger Will Continue Charging When The Stove Is Or Is Not In Use As Long As AC Power Is Available.

1. Disconnect the 110 volt AC power before connecting the 12 volt DC battery.
2. Determine location for 12 volt battery and obtain the proper length and type wire. (Use 18 AWG stranded wire.)
3. Drill and install 1/2" conduit where passing through a wall or floor.
4. Connect red 18 AWG wire to red (+) positive battery jack on the stove.
5. Connect black 18 AWG wire to black (-) negative battery jack on the stove.
6. Pass wires through conduit where used to battery location. Allow enough wire length between battery box and exterior wall for a drip loop to prevent moisture from contacting terminals.
7. Check in-line fuse holder for 4-amp fast-blow fuse.
8. Connect the red (+) wire to positive terminal on the battery.
9. Connect the black (-) wire to the negative terminal on the battery. Reconnect 110 volt AC power.

The stove is now ready for 12 volt back-up and will switch automatically to 12 volt operation when AC power is lost and back again when AC power is restored. When power is restored the 12 volt battery will be recharged.

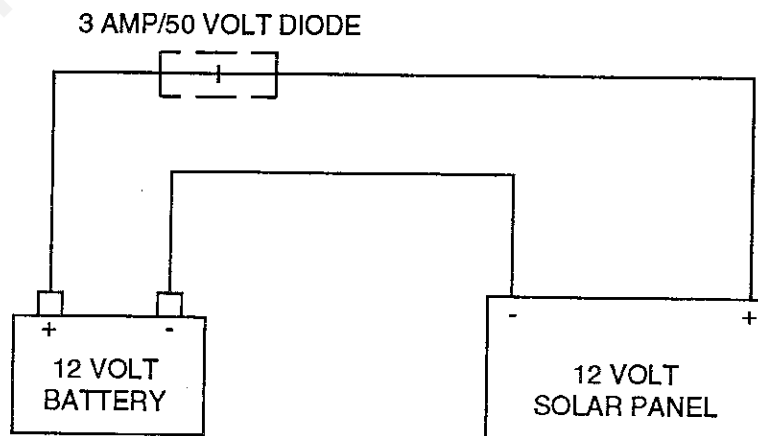


FIG. 10

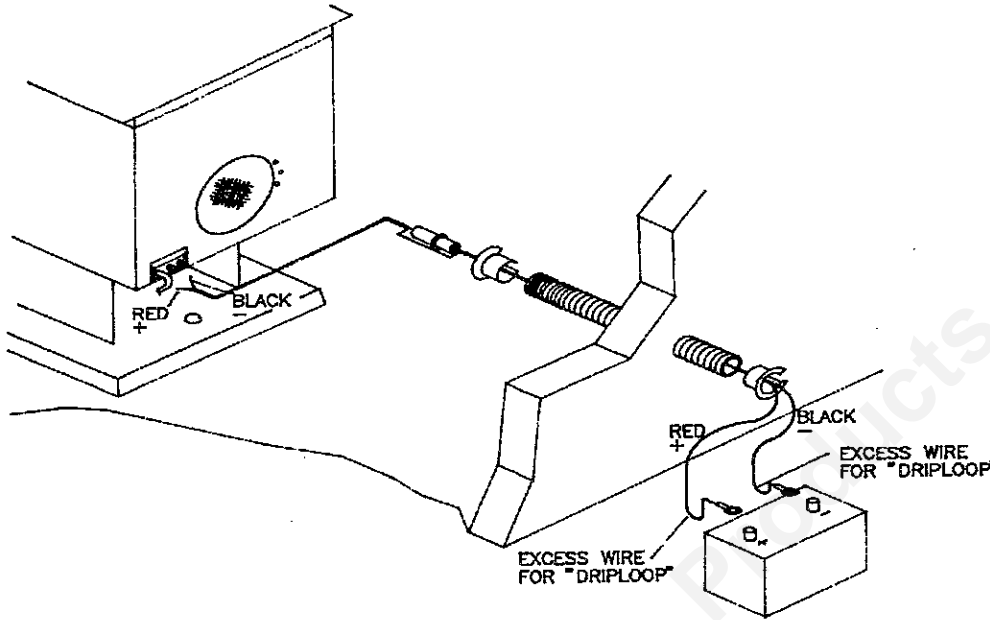


FIG. 11

Operating Instructions

Heating Capacity - The square foot heating capacity is subject to the R-factor of the home and the layout. Single story dwellings are typically easier to heat than multiple story. All pellet stoves operate at approximately one pound of fuel per hour on LOW. The LOW setting is used as a pilot and will sustain a room's temperature for an extended period of time. However, the BTU's produced are not sufficient to generally heat a home. The MEDIUM and/or HIGH settings are required to raise the temperature of the space being heated. Pellet stoves operate primarily as convection heaters and consumers who are used to radiant type wood heating may feel colder at the same room temperature. Your pellet heater is capable of heating a well insulated, single story home of up to 1800 square feet.

1. RECOMMENDED FUEL: Your Pellet Heater is designed to burn low-ash pellets (Grade A) manufactured to the AFPI Standard for residential pellet fuels.

2. CAUTION: STORE FUEL IN A CLEAN DRY PLACE. Refer to the section "Pellet Fuel" in your owners manual for a listing of approved pellets.

3. PRIMING THE AUGER: Never leave the stove unattended during priming or start up. Priming the auger is only required when the unit is new or when the hopper has completely run out of fuel.

To Prime The Auger:

- a) Load the hopper with pellets.
- b) Turn the heater power switch to "ON" and set the selectable control switch in the No. 1 position. (NOTE: This is the low-fan and/or burnspeed when the stove is operating.
- c) Press the "Start and/or Manual Feed" button, and hold the button down for approximately two minutes or until the pellets begin to feed into the burn pot. The auger light will come on, indicating that the auger motor is running. NOTE: When the pellets begin to drop regularly, the auger is primed. Allow the pellets to accumulate in the fire pot to approximately 1/2" depth. The start button may now be released.
- d) Turn the power switch to "OFF".

4. STARTING YOUR STOVE:

NOTE: Each time the stove is started, the fire pot should be checked for debris, and all air holes should be cleaned, Do not allow ash to build up underneath the firepot. Inspect and clean before each start-up.

- a) Open the door and add approved fire-starter to 1/2" of pellets in the fire pot and light the fire-starter. Once the fire-starter is burning freely, close the door and securely latch it.
- b) Pull the air damper control rod to the full open position.

c) When the pellets are burning well, move the selectable control switch to the No. 1 position and turn the power switch to the "ON" position. Then press the Start/Manual Feed Button momentarily and release.

NOTE: The green power light will come on, indicating that the auger timer is energized. It will cycle on and off during operation.

5. RUNNING YOUR STOVE: IMPORTANT: Selecting the proper combustion air is done by moving the air damper control rod in or out to decrease or increase the air flow (IN is closed; OUT is open). High altitude or ash fuel may require more air for efficient fuel combustion. The stove should be started with the damper control rod OUT in the full open position; then, push the damper control rod IN until a stable, brightly burning flame is achieved. The half-open position is typical for most fuels and installations, once the stove is heated to normal operating temperature.

a) After starting the stove, leave it burning on the "LOW" or No. 1 position for at least five minutes to allow the stove to heat to normal operating temperatures. You may then set the desired burn rate by moving the control switch to the desired operating position.

b) Select the most efficient burn by adjusting the air damper control rod in or out. Again, altitude and fuel types greatly affect the amount of air required. Half-damper is typical for most installations and fuels.

NOTE: The operating temperatures of this unit may vary with the different types or grades of fuel used.

6. TURNING THE STOVE OFF: Move the power switch to the "OFF" position. The fan will continue to run for approximately 10 minutes to let the stove cool down, and then automatically shut itself off.

7. SAFETY FEATURES:

a) **STOVE PRESSURE SENSOR:** A blocked flue, a downdraft or failure to clean the 3" exhaust in the stove will cause the pressure to shut off the fuel feed. To resume operation, it is necessary to locate the cause and correct it. Restart the stove, using the Starting Instructions above.

b) **OVERHEAT SENSOR:** If the stove overheats, it will shut itself down safely. The stove will not restart until it has cooled. **WARNING:** Auger jams are the leading cause of stove malfunctions. Jams occur due to foreign objects in the fuel, or more commonly, failure to follow the Operating Instructions. Most auger jams are preventable by properly priming the auger as required before starting the stove. Keeping the auger full of fuel will help prevent auger jams, and inspection of the fuel for any foreign objects prior to use will also help. In addition, excessive sawdust can be a problem if it builds up in the hopper and blocks the smooth flow of pellets.

8. PROPER BURN CHARACTERISTICS: Your Pellet Heater should produce a bright yellow or whitish flame under normal operation. If the flame becomes reddish and/or orange and smokey, your stove probably needs routine maintenance. (See Cleaning & Maintenance for more information.)

9. AUGER FEED ADJUSTMENTS: The auger feed adjustments have been pre-set at the factory. No field adjustments should be attempted. The potentiometers provided on the control panel are to be used only for future fuels, such as olive pits, cherry pits, soy beans, bio-mass, etc.

10. AUGER JAMS: Auger jams are the leading cause of service problems and are almost always preventable. They're caused by foreign material or improper operation of the stove. Most commonly, jams are due to excessive sawdust allowed to enter the hopper, or allowing the hopper to run out of fuel, requiring repriming the auger. This is an operation which requires close attention by the operator to prevent a backup of fuel which could cause the auger to jam.

Cleaning & Maintenance Instructions

CAUTION

THE STOVE WILL NEED TO BE SHUT OFF AND THOROUGHLY COOLED BEFORE ANY MAINTENANCE IS PERFORMED. REMEMBER TO ALWAYS DISCONNECT THE STOVE FROM THE POWER SOURCE BEFORE DOING ANY CLEANING OR MAINTENANCE.

A. LEVEL ONE (Weekly/Bi-Weekly)

1. The ash pans. (Refer to "Disposal of Ashes", page 5)
2. The protective screen over the fan in the rear. Remove any lint.
3. The heat exchanger tubes. (If cleaning is necessary, see "LEVEL TWO")
4. Burn pot. Empty and clean as necessary. While the pot is removed, it's a good time to vacuum below it. NOTE: Flash build-up will be in direct proportion to the ash content of the fuel you use. (Refer to "Recommended Fuel Types", page 13)
5. After you've thoroughly cleaned the ash pans and the burn pot (including removal of any build-up in the air holes), replace the pans and the firepot.
6. Glass Care and Maintenance - During normal operation, soot and/or creosote will accumulate on the glass and will need to be removed for full viewing pleasure. Clean the glass when the stove is cold with a non-abrasive cleaner. Take care to not scratch the ceramic glass, as scratches not only cloud the surface, they also weaken the glass.

B. LEVEL TWO (After Each Consumption of 1000 lbs. of Pellets)

1. Repeat "LEVEL ONE".
2. Remove all pellets, particles and sawdust from the hopper. Then vacuum the hopper and exposed portions of the auger. Note that most home vacuum cleaners will permit fine ash to escape. A wet-dry type vacuum cleaner is recommended. Be sure to discard the vacuum bag after each application to your pellet stove. (Refer to "Disposal of Ashes", page 5)
3. Inspect and clean as necessary the 3" exhaust and heat exchanger tubes in the stove.
 - a) Close the door and remove the louvered grill.
 - b) Remove the two 1/4" x 20 x 5/8" bolts from the face of the stove and pull off the face-cap. (Refer to the below drawing.) The ash rake is now accessible through the cut-out in the front of the stove.
 - c) Insert the rake handle into the hole on the lower front of the ash rake and pull the handle back and forth several times in a brisk fashion to remove any ash build-up.
 - d) This is a good time to inspect the 3" exhaust and heat exchange area for any ash build-up. Remove as required with a brush or vacuum.
4. Inspect and clean the chimney pipe and cap for soot and ash build-up. It is important to keep your vent system as clean as possible to prevent the pipe from becoming restricted or plugged after prolonged burning. If you're using a clean-out tee as recommended, this is a simple process.
5. Check the ceramic gaskets on the door for wear and replace as necessary (usually on an annual basis).

C. LEVEL THREE (Annually or After Consumption of 4000 - 6000 lbs. of Pellets)

1. Repeat "LEVEL ONE".
2. Perform all steps listed in "LEVEL TWO", including the very necessary cleaning of the 3" heat exhaust pipe and heat exchangers.
3. Door Seal And Gasket - Replacements may be necessary after a years use. If so, we recommend purchasing the replacement gasket and sealant. (Available from the factory. See "Parts List".) Remember that leakage around the door seal will cause insufficient combustion air to the burn pot. Over time, the ceramic gasket can shrink, become brittle, and begin to deteriorate. The "dollar bill test" is a simple check to test the integrity of the seal (so long as the unit is cold). Simply take a dollar bill and place it at various points around the door, closing and latching the door on the dollar bill. The dollar bill should either be impossible to pull through, or can be pulled through only with some difficulty. (P.S. Don't tear your dollar bill.)
 - a) Remove the door from the stove by lifting straight upwards off its hinge pins while in the open position.
 - b) Place the door on a flat surface, being careful not to lean it against the door handle.
 - c) Remove the old gaskets from the cast door and scrape any remaining adhesive. The cast surface must be clean, free of dirt, scale or adhesive.
 - d) Lay out new gasket in the groove just cleaned. Trim as necessary and set aside.
 - e) Apply about a 1/4" bead of gasket cement in the groove.
 - f) Apply the ceramic gasket to the groove, beginning in the center between the hinge pads. DO NOT STRETCH THE GASKET. Insure there are no gaps or overlapped ends and allow the adhesive to dry for (8-16 hours) before installing the door.
 - g) Reinstall door and allow adhesive to harden with door closed and latched. Check periodically during your first few fires.

INSTALLATION OF REPLACEMENT GLASS

1. Make certain the fire is out and the stove is cool to touch.
2. Remove the door from the stove.
3. Lay the door face down on a table or counter with the door handle hanging off the edge of the table or counter, so the door lays flat. Protect the table or counter to avoid scratches.
4. Using a phillips screwdriver, remove the retaining screws and tabs from the door back and gently remove the glass from the door.
5. Strip the 3/4" gasket material from the door frame and clean all debris from the door gasket channel.
6. Using approved High-Tech gasket adhesive, apply a small amount of adhesive throughout the channel cavity. (This will hold the rope gasket in place.)
7. Replace the old rope gasket with new rope gasket in the door cavity.
8. Use only 5mm Neoceram Glass.
9. Position the glass with its edges evenly overlapping the opening in the door.
10. Replace the screws and tabs being careful not to cross thread them.
11. Tighten each screw just a few turns until each tab is secured. Then continue to tighten each screw alternately a few turns at a time until snug. Finish by tightening each screw firmly, but do not overtighten.
12. Replace the door on the stove.

Trouble Shooting Guide

<u>PROBLEM</u>	<u>CAUSES</u>	<u>SOLUTIONS</u>
<i>PELLETS NOT FEEDING</i>	<ol style="list-style-type: none"> 1. Hopper is empty. 2. Switch is off. 3. Appliance is unplugged. 4. Power to appliance is off. 5. Defect in the circuit board or auger. 6. Pressure switch defective. 7. Limit switch or relay defective. 	<p>Refill hopper.</p> <p>Turn slowly to proper setting.</p> <p>Plug supply cord into 120 volt grounded outlet.</p> <p>Check power supply cords. Check the fuse box or breaker box. If connected to a 12 volt battery, check the connections.</p> <p>See "Test Check List" or call certified dealer or the factory.</p> <p>See "Test Check List" or call certified dealer or the factory.</p> <p>See "Test Check List" or call certified dealer or the factory.</p>

<u>PROBLEM</u>	<u>CAUSES</u>	<u>SOLUTIONS</u>
<i>PELLETS NOT FEEDING (CON'T)</i>	<p>8. Auger not primed.</p> <p>9. Exhaust or flue is plugged.</p>	<p>Prime auger, following given instructions.</p> <p>Perform "Cleaning and Maintenance (Level Two)".</p>
<i>START-UP FIRE GOES OUT</i>	<p>1. Insufficient air is being delivered to the firepot.</p> <p>2. Air damper control rod incorrectly set.</p> <p>3. Combustion air inlets blocked.</p> <p>4. Burn pot full of ashes and residue.</p> <p>5. Hopper feed door or glass door open.</p> <p>6. Firepot incorrectly positioned.</p> <p>7. Insufficient fire starter used.</p>	<p>Check for exterior air leaks, and gasket or caulk as necessary.</p> <p>Open or close to achieve a stable, brightly burning flame (usually half-open position). IN is closed; OUT is open.</p> <p>Perform "Cleaning and Maintenance (Level Two)". If you have direct air access, make sure it is not blocked.</p> <p>Perform "Cleaning and Maintenance (Level One)". Make sure all holes are clean.</p> <p>Make sure each is in place and securely latched.</p> <p>Align properly.</p> <p>Repeat start-up procedures, using an adequate amount of fire starter.</p>
<i>FIREPOT OVERFILLS ON STARTUP</i>	<p>1. Insufficient air is being delivered to the firepot.</p> <p>2. Air damper control rod incorrectly set.</p> <p>3. Door open.</p> <p>4. Firepot out of place.</p> <p>5. Inadequate fire starter used.</p> <p>6. Clogged burn pot.</p> <p>7. Insufficient combustion air. (Inlet blocked)</p>	<p>Check for exterior air leaks, and gasket or caulk as necessary.</p> <p>Open or close to achieve a stable, brightly burning flame (usually half-open position).</p> <p>Make sure it is in place and securely latched.</p> <p>Align properly.</p> <p>Repeat start-up procedures, using an adequate amount of fire starter.</p> <p>Perform "Cleaning and Maintenance (Level One)". Insure all holes in firepot are clear and all ash and residue are removed.</p> <p>Perform "Cleaning and Maintenance (Level One)".</p>

<u>PROBLEM</u>	<u>CAUSES</u>	<u>SOLUTIONS</u>
LAZY FLAME DULL-ORANGE TO RED IN COLOR	<p>1. Insufficient air is being delivered to the firepot.</p> <p>2. Pellet feed rate too high.</p>	<p>Perform "Cleaning and Maintenance (Level One)", paying attention to holes in firepot. Access the 3" exhaust tube. (See "Cleaning and Maintenance-Level Two) Check for ash formation on heat exchanger tubes. Insure that the clean-out plug is properly seated and sealed. Check for exterior air leaks, and gasket or caulk as necessary. Check door gasket seal. (See "Cleaning and Maintenance" for replacement instructions.)</p> <p>If you cannot attain the proper setting, you may have to adjust the feed rate on the control panel. If you do not feel confident to perform this function yourself, call your dealer or the factory.</p>
FIRE GOES OUT OR QUILTS AUTOMATICALLY	<p>1. The hopper is empty.</p> <p>2. Pellets are not feeding.</p> <p>3. Insufficient air is being delivered to the firepot.</p> <p>4. Air damper control rod incorrectly set.</p> <p>5. High-limit temperature switch (thermo-disc) has tripped.</p> <p>6. Pellet feed rate is too low.</p> <p>7. Power supply has been disrupted.</p>	<p>Refill hopper.</p> <p>Auger may be jammed. Call your certified dealer or factory for proper procedure. Unplug the unit from the power source.</p> <p>See No. 1, under "Lazy Flame Dull-Orange to Red in Color".</p> <p>Open or close to achieve a stable, brightly burning flame (usually half-open position).</p> <p>Call certified dealer or factory.</p> <p>If you cannot attain the proper setting, you may have to adjust the feed rate on the control panel. If you do not feel confident to perform this function yourself, call your dealer or the factory.</p> <p>Check power supply cords. Check fuse box or breaker box. If connected to a 12 volt battery, check the connections and the fuse.</p>
SMOKY EXHAUST	<p>1. Air damper control rod incorrectly set.</p>	<p>Open or close to achieve a stable, brightly burning flame (usually half-open position).</p>

<u>PROBLEM</u>	<u>CAUSES</u>	<u>SOLUTIONS</u>
<i>SMOKY EXHAUST (CON'T)</i>	<p>2. Combustion in-take is restricted.</p> <p>3. Hopper door or viewing door left ajar.</p> <p>4. Firepot plugged.</p> <p>5. Exhaust clogged.</p> <p>6. Restriction in the combustion air supply source.</p> <p>7. Incorrect control setting.</p> <p>8. Fuel.</p>	<p>Perform "Cleaning and Maintenance (Level One)".</p> <p>Securely latch door.</p> <p>Perform "Cleaning and Maintenance (Level One)".</p> <p>Perform "Cleaning and Maintenance (Level Two)". Properly clean the vent pipe.</p> <p>If direct air access kit has been installed, make sure the duct is clear.</p> <p>Turn to the next highest setting.</p> <p>Do not use high ash or poor quality fuel or fuel that is wet.</p>
<i>STOVE HAS SHUT OFF, BUT HOPPER IS STILL FULL</i>	<p>1. One or more of the automatic features has shut the unit down.</p>	<p>See "Test Check List" or call your certified dealer or factory.</p>
<i>FIREPOT OVERFILLS AND SPILLS OVER</i>	<p>1. Air damper control rod incorrectly set.</p> <p>2. Combustion in-take is restricted.</p> <p>3. Hopper door or viewing door left ajar.</p> <p>4. Insufficient air is being delivered to the firepot.</p> <p>5. Firepot Plugged.</p>	<p>Open or close to achieve a stable, brightly burning flame (usually half-open position).</p> <p>Perform "Cleaning and Maintenance (Level One)".</p> <p>Securely latch door.</p> <p>Perform "Cleaning and Maintenance (Level One)", paying attention to holes in firepot. Access the 3" exhaust tube. (See "Cleaning and Maintenance-Level Two) Check for ash formation on heat exchanger tubes. Insure that the clean-out plug is properly seated and sealed. Check for exterior air leaks, and gasket or caulk as necessary. Check door gasket seal. (See "Cleaning and Maintenance" for replacement instructions.)</p> <p>Perform "Cleaning and Maintenance (Level One)".</p>

<u>PROBLEM</u>	<u>CAUSES</u>	<u>SOLUTIONS</u>
LAZY FLAME DULL-ORANGE TO RED IN COLOR	<ol style="list-style-type: none"> 1. Insufficient air is being delivered to the firepot. 2. Pellet feed rate too high. 	<p>Perform "Cleaning and Maintenance (Level One)", paying attention to holes in firepot. Access the 3" exhaust tube. (See "Cleaning and Maintenance-Level Two) Check for ash formation on heat exchanger tubes. Insure that the clean-out plug is properly seated and sealed. Check for exterior air leaks, and gasket or caulk as necessary. Check door gasket seal. (See "Cleaning and Maintenance" for replacement instructions.)</p> <p>If you cannot attain the proper setting, you may have to adjust the feed rate on the control panel. If you do not feel confident to perform this function yourself, call your dealer or the factory.</p>
FIRE GOES OUT OR QUILTS AUTOMATICALLY	<ol style="list-style-type: none"> 1. The hopper is empty. 2. Pellets are not feeding. 3. Insufficient air is being delivered to the firepot. 4. Air damper control rod incorrectly set. 5. High-limit temperature switch (thermo-disc) has tripped. 6. Pellet feed rate is too low. 7. Power supply has been disrupted. 	<p>Refill hopper.</p> <p>Auger may be jammed. Call your certified dealer or factory for proper procedure. Unplug the unit from the power source.</p> <p>See No. 1, under "Lazy Flame Dull-Orange to Red in Color".</p> <p>Open or close to achieve a stable, brightly burning flame (usually half-open position).</p> <p>Call certified dealer or factory.</p> <p>If you cannot attain the proper setting, you may have to adjust the feed rate on the control panel. If you do not feel confident to perform this function yourself, call your dealer or the factory.</p> <p>Check power supply cords. Check fuse box or breaker box. If connected to a 12 volt battery, check the connections and the fuse.</p>
SMOKY EXHAUST	<ol style="list-style-type: none"> 1. Air damper control rod incorrectly set. 	<p>Open or close to achieve a stable, brightly burning flame (usually half-open position).</p>

<i>PROBLEM</i>	<i>CAUSES</i>	<i>SOLUTIONS</i>
<i>FIREPOT OVERFILLS AND SPILLS OVER (CONT)</i>	<p>6. Exhaust clogged.</p> <p>7. Restriction in the combustion air supply source.</p> <p>8. Incorrect control setting.</p> <p>9. Fuel.</p>	<p>Perform "Cleaning and Maintenance (Level Two)". Properly clean the vent pipe.</p> <p>If direct air access kit has been installed, make sure the duct is clear.</p> <p>Turn to the next highest setting.</p> <p>Do not use high ash or poor quality fuel or fuel that is wet.</p>
<i>BLOWER NOT OPERATING</i>	<p>1. No power to the stove.</p> <p>2. No power to the control board.</p>	<p>Make sure the stove is plugged into an operable wall outlet. Check to see if your circuit has tripped or if you have a blown fuse. If using a 12 volt battery, check the 4 amp fuse and insure the battery is charged.</p> <p>Check the wiring connections between the power cord and terminals.</p>
<i>AUGER NOT OPERATING</i>	<p>1. Incorrect start-up procedures.</p> <p>2. Auger is jammed.</p>	<p>Perform proper start-up as specified in the START-UP section.</p> <p>Disconnect the pellet heater from the power source and allow to cool. Open the glass door and attempt to dislodge compacted pellets at the head of the auger feed screw (use a long shank screwdriver accessed via the discharge outlet). There is also a reversal procedure, as your auger motor is 12 volt DC. Call your certified dealer or the factory for the safe and correct procedure.</p>
<i>SOOT OR ASH AROUND STOVE OR IN HOUSE</i>	<p>1. The viewing door has been left open while the stove is in operation.</p> <p>2. Gasket may not be sealing properly.</p>	<p>DO NOT open the viewing door during operation of the stove.</p> <p>Insure the gasket is intact and sealing the firebox. Replace if necessary.</p>
<i>UNBURNED PELLETS BUILDING UP</i>	<p>1. Air damper control rod incorrectly set.</p>	<p>Open or close to achieve a stable, brightly burning flame (usually half-open position).</p>

<u>PROBLEM</u>	<u>CAUSES</u>	<u>SOLUTIONS</u>
UNBURNED PELLETS BUILDING UP (CONT)	<p>2. Insufficient air is being delivered to the firepot.</p> <p>3. Pellet feed rate too high.</p>	<p>Perform "Cleaning and Maintenance (Level One)", paying attention to holes in firepot. Access the 3" exhaust tube. (See "Cleaning and Maintenance-Level Two) Check for ash formation on heat exchanger tubes. Insure that the clean-out plug is properly seated and sealed. Check for exterior air leaks, and gasket or caulk as necessary. Check door gasket seal. (See "Cleaning and Maintenance" for replacement instructions.)</p> <p>If you cannot attain the proper setting, you may have to adjust the feed rate on the control panel. If you do not feel confident to perform this function yourself, call your dealer or the factory.</p>
WINDOWS GET SOOTED UP FREQUENTLY	<p>1. Air damper control rod incorrectly set.</p> <p>2. Insufficient air is being delivered to the firepot.</p>	<p>Open or close to achieve a stable, brightly burning flame (usually half-open position).</p> <p>Perform "Cleaning and Maintenance (Level One)", paying attention to holes in firepot. Access the 3" exhaust tube. (See "Cleaning and Maintenance-Level Two) Check for ash formation on heat exchanger tubes. Insure that the clean-out plug is properly seated and sealed. Check for exterior air leaks, and gasket or caulk as necessary. Check door gasket seal. (See "Cleaning and Maintenance" for replacement instructions.)</p>
SMOKE SMELL IN THE HOUSE AND UNIT HAS SHUT DOWN	<p>1. The unit has shut off due to an intermittent power failure.</p>	<p>Check all electrical power sources, including the battery backup if installed. Wait 30 minutes and relight. If unit will not light and burn properly, call your certified dealer or factory. See "Test Check List".</p>
SMOLDERING FIRE	<p>1. The firepot has become overfilled.</p> <p>2. Pellets are wet and deteriorating.</p>	<p>Refer to solution to correct this condition, found above.</p> <p>Use high-quality pellets shipped in plastic lined bags. All pellets should be kept dry and stored in a dry place.</p>

Test Check List

Your pellet heater, though it may appear complex, is really quite simple. And, if you are a do-it-yourselfer, you'll be able to diagnose the following more unusual problems (which usually result after extended use).

FAN WON'T RUN

Check in this order:

1. AC and/or DC power supply.
2. Incorrect polarity to fan.
3. Loose wire in stove.
4. Bad thermo-disc (continuity check).
5. Test fan connecting directly to 12 volt DC source (WATCH POLARITY).
6. Replace PC board assembly.

FAN RUNS, AUGER WON'T RUN

Check in this order:

1. Reset. (Auger will not run in "OFF" position.)
2. Check the trim pot adjustments and observe the green LED light. It will come on each time the auger comes on. Then, switch to MED. or HIGH position.
3. Auger motor wires are loose or burned; check and replace as necessary.
4. The stove has over-heated and needs to cool down in normal cycle. Place switch to the "OFF" position. Also, check the air pressure switch for proper hose routing and for correct wiring and wiring integrity. If this does not correct the problem, you may check the air pressure switch by blowing air into the brass aperture located at the rear of the stove. You should hear an audible click. This, however, does not mean the switch is good. The contacts inside could be burned. The air pressure switch can be bypassed by connecting the auger directly to a 12 volt battery.
5. Replace the PC board assembly.

AUGER RUNS CONTINUOUSLY (ANY POSITION)

Check the following:

1. Check for correct wiring.
2. POT adjustments may be turned off.
3. Physical damage to the slide switch and/or the circuit board.
4. Replace the PC board assembly.

AUGER RUNS CONTINUOUSLY (ONE POSITION)

Check the following:

1. Trim pot adjustments. They may be set too low or broken.
2. Physical damage to slide switches, reset button or circuit board.
3. Replace PC board assembly.

AIR PRESSURE SWITCH (APS)

Check the following:

1. Disable the APS and bypass as outlined above. Replace as necessary.
2. Check wiring to APS switch. A-wire to common; B-wire to normally closed.
3. Check the high-low pressure hose hook-up.
4. Check wiring integrity.
5. Check the exhaust pipe and/or flue. They may be excessively dirty and clogged.
6. Hose disconnected from auger.
7. Improper installation, such as too much vent pipe or of the wrong size.
8. Defective APS.
9. Extremely windy conditions.

Normal Operational Noises

AIR NOISE - *Air being forced through the heat exchanger tubes.*

VARYING HUM OR LOW PITCH WHINE - *Blower sounds as fan speeds change.*

INTERMITTANT MECHANICAL BUZZING - *Auger motor in operation.*

CLINKING SOUND - *Pellets feeding into the burn pot.*

Pellet Heater Options

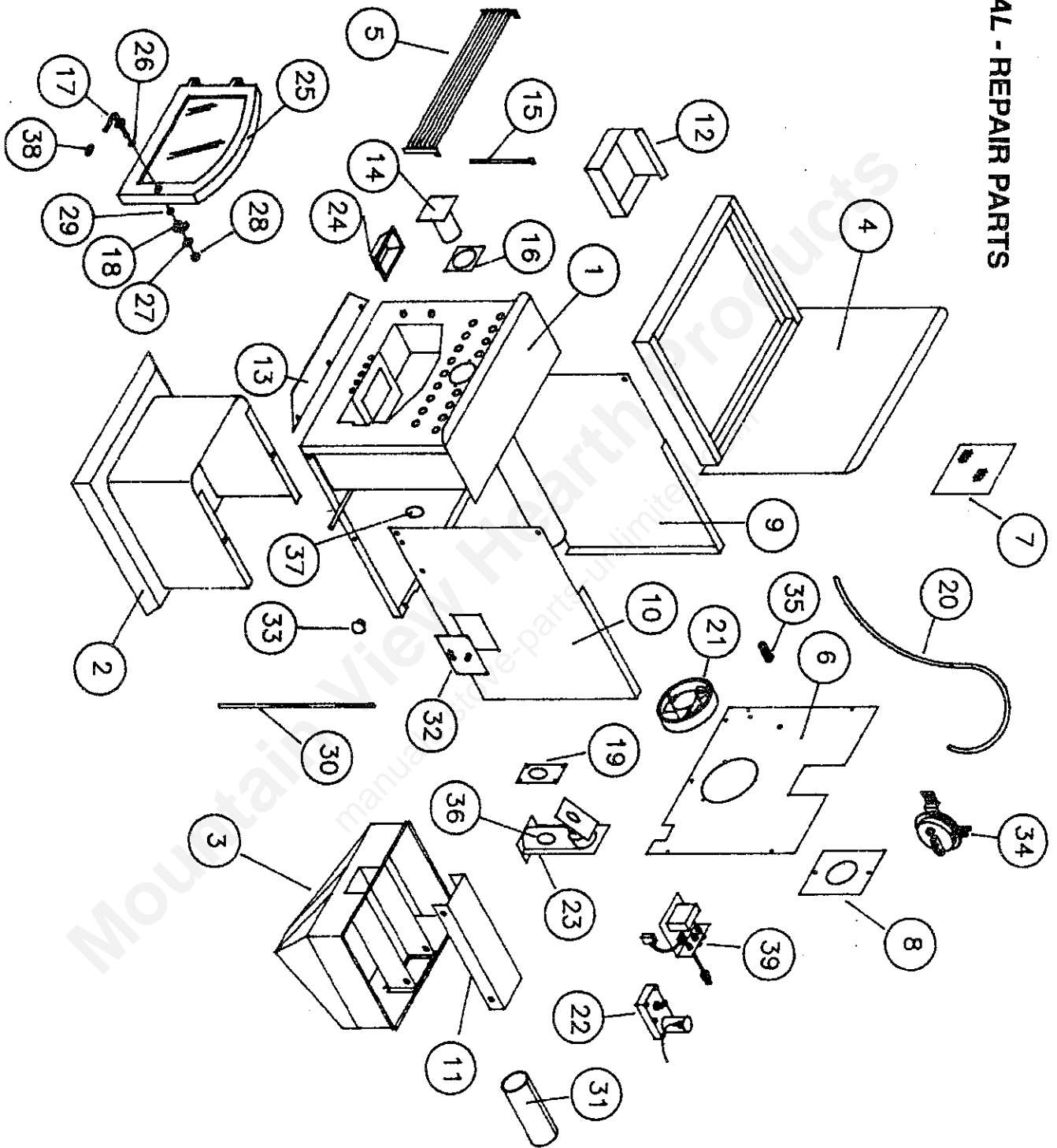
54RTO THERMOSTAT: Allows the pellet heater to be controlled from another room. When using a thermostat, set the stove to the "MEDIUM" or "HIGH" setting, and it will switch automatically to the low setting after the desired temperature has been reached. The stove will burn at the rate selected on demand by the thermostat (medium or high).

54DCK 12 VOLT DC KIT: Comes complete with polarized wiring, fuse protection and battery connectors.

54DAAK DIRECT AIR ACCESS KIT: Provides outside air for combustion, maintains proper air pressure within the home and improves draft and performance.

54HEK HOPPER EXTENSION KIT: Increase hopper height for up to 100 lbs. pellet capacity.

PEDESTAL - REPAIR PARTS



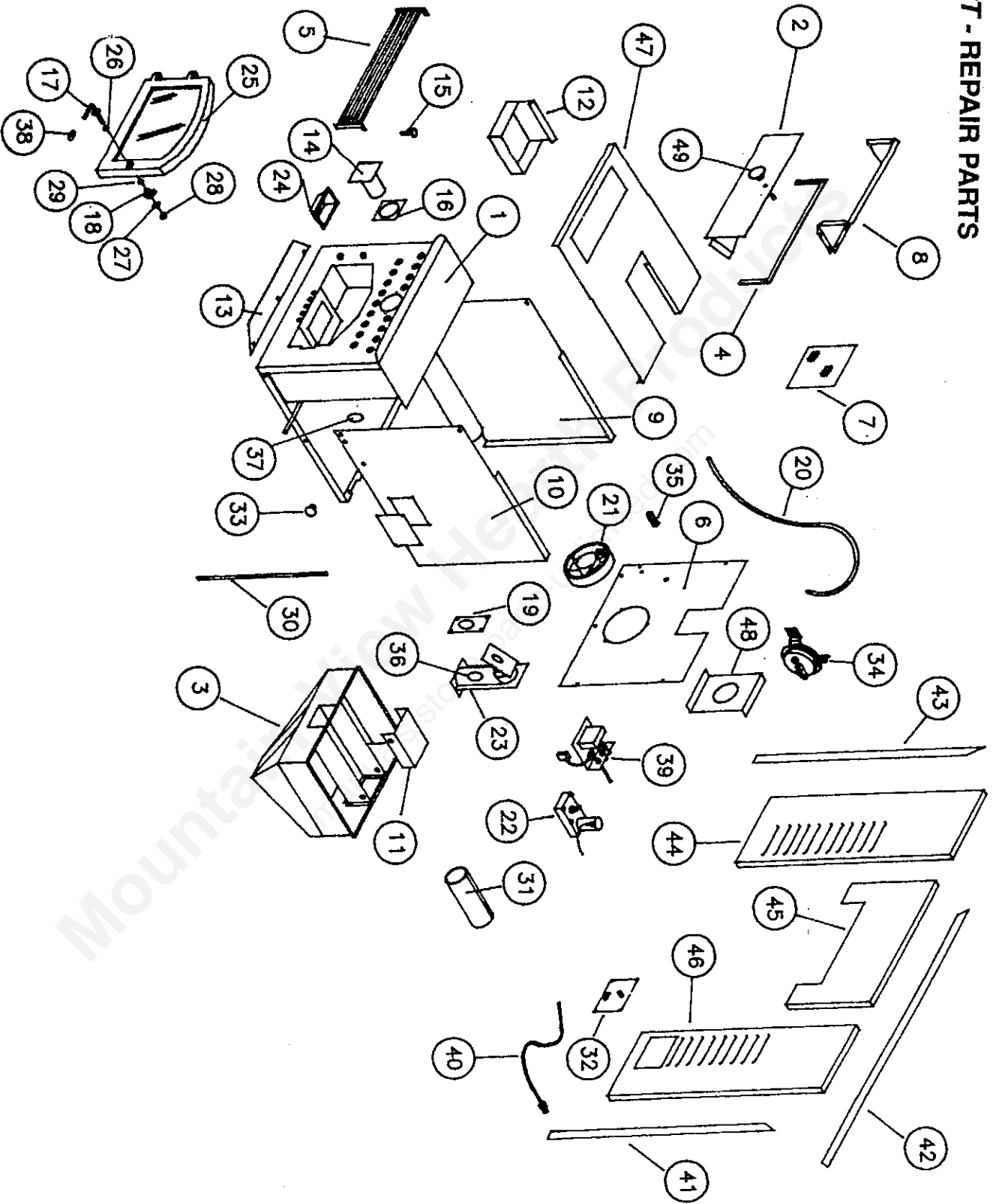
Pedestal Pellet Heater - Parts List

KEY	PART NO.	DESCRIPTION
1	68703	FIREBOX WELD. ASS'Y.
2	68710	PEDESTAL WELD ASS'Y.
3	68704	HOPPER WELD. ASS'Y.
4	68711	HOPPER LID WELD. ASS'Y.
5	68716	LOUVERED GRILLE WELD.
6	23686	CABINET BACK
7	86487	FILTER SCREEN
8	23714	FLUE COLLAR COVER
9	23685	CABINET LEFT SIDE
10	23684	CABINET RIGHT SIDE
11	23701	FLUE HOUSING TOP
12	23688	ASH PAN (#2)
13	23706	HEARTH EXTENSION
14	68714	FACE CAP & PLUG
15	83443	DOOR HINGE PIN (#2)
16	88068	FACE CAP GASKET, CLEANOUT
17	68682	FEED DOOR HANDLE ASS'Y.
18	40310	CAM
19	84958	GASKET, AUGER CASTING
20	80312	NEOPRENE TUBING (4')
21	80310	FAN ASSEMBLY
22	80311	AUGER MOTOR
23	68712	AUGER ASS'Y.
*	40294	AUGER CASTING
*	89598	AUGER SHAFT/FLIGHT WELD.
*	83877	BRONZE BUSHING
*	89600	FLANGE PLATE
*	83878	DELREN BUSHING
*	83339	1/4-20 x 3/4 HX BOLT (#6)
*	83250	1/4-20 KEP NUT (#6)

KEY	PART NO.	DESCRIPTION
*	83434	1/4-20 x 1/2 HEX BOLT
*	89586	AUGER NIPPLE
*	89603	BRASS NIPPLE
24	23689	BURN POT
25	68708	DOOR ASS'Y.
26	83405	WASHER 5/16 I.D. (#8)
27	83109	SQ. NUT 1/4-20
28	83250	1/4-20 KEP NUT (#7)
29	83435	5/16 I.D. x 5/8 O.D. WASHER (#2)
30	89590	BRASS TRIM (#2)
31	89595	CERAMIC INSULATION
32	80316	CIRCUIT ASS'Y.
33	89597	AIR CONTROL KNOB
34	80315	PRESSURE SWITCH
35	89586	BRASS TUBING CONNECTOR
36	80313	L190 SWITCH
37	80314	F-120 SWITCH
38	89601	BRASS SPRING
*	83337	5/16-18 x 1-1/4 HX, C/S (#8)
*	83172	#10A x 1/2 HXW S.M. (#28)
*	83236	1/4-20 x 3/4 HXW TY F (#2)
*	83338	5/16-18 LOCKNUT (#6)
*	83220	10-32 x 3/8 HXW TS(#3)
*	83343	#10 x 1/2 HXW D.P. (#2)
*	83339	1/4-20 x 3/4 HX BOLT (#2)
*	88047	GLASS GASKET (3')
*	83261	LOCKNUT 1/4-20 (#2)
*	83433	8x14 HXW (#2)
39	80317	WIRING HARNESS
*	89583	COVER HINGE GASKET (10")

* NOT SHOWN

INSERT - REPAIR PARTS



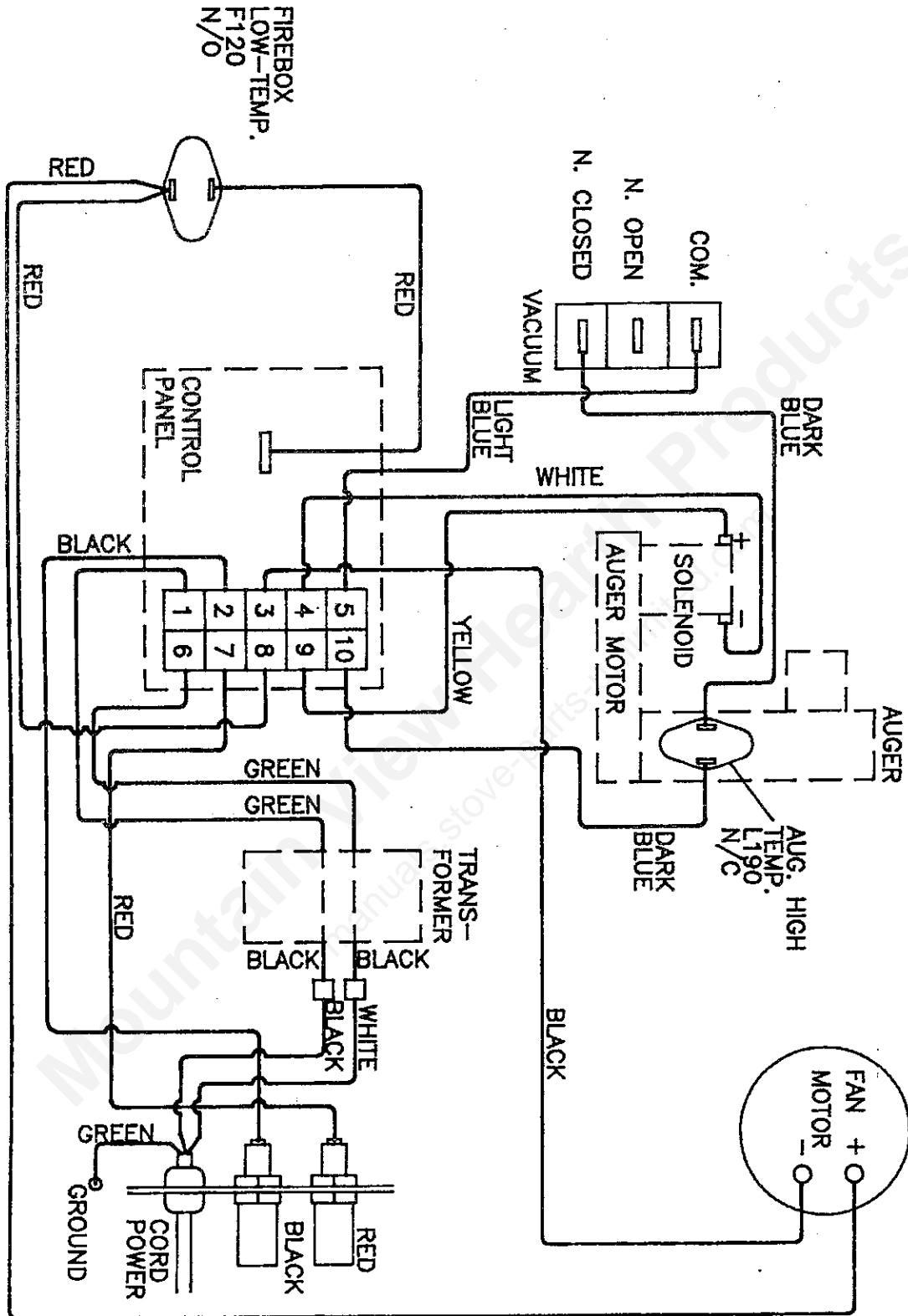
Insert Pellet Heater - Parts List

KEY	PART NO.	DESCRIPTION
1	68703	FIREBOX WELD. ASS'Y.
2	68847	HOPPER FEED DOOR ASS'Y.
3	68704	HOPPER WELD. ASS'Y.
4	89682	MAGNETIC TAPE
5	68716	LOUVERED GRILLE WELD.
6	23686	CABINET BACK
7	86487	FILTER SCREEN
8	23842	FEED HOUSING
9	23685	CABINET LEFT SIDE
10	23684	CABINET RIGHT SIDE
11	23701	FLUE HOUSING TOP
12	23688	ASH PAN (#2)
13	23706	HEARTH EXTENSION
14	68714	FACE CAP & PLUG
15	83443	DOOR HINGE PIN (#2)
16	88068	FACE CAP GASKET, CLEANOUT
17	68682	FEED DOOR HANDLE ASS'Y.
18	40310	CAM
19	84958	GASKET, AUGER CASTING
20	80312	NEOPRENE TUBING (4")
21	80310	FAN ASSEMBLY
22	80311	AUGER MOTOR
23	68712	AUGER ASS'Y.
*	40294	AUGER CASTING
*	89598	AUGER SHAFT/FLIGHT WELD.
*	83877	BRONZE BUSHING
*	89600	FLANGE PLATE
*	83878	DELREN BUSHING
*	83339	1/4-20 x 3/4 HX BOLT (#6)
*	83250	1/4-20 KEP NUT (#6)

KEY	PART NO.	DESCRIPTION
*	83434	1/4-20 x 1/2 HEX BOLT
*	89586	AUGER NIPPLE
*	89603	BRASS NIPPLE
24	23689	BURN POT
25	68708	DOOR ASS'Y.
26	83405	WASHER 5/16 I.D. (#8)
27	83109	SQ. NUT 1/4-20
28	83250	1/4-20 KEP NUT (#7)
29	83435	5/16 I.D. x 5/8 O.D. WASHER (#2)
30	89590	BRASS TRIM (#2)
31	89595	CERAMIC INSULATION
32	80316	CIRCUIT ASS'Y.
33	89597	AIR CONTROL KNOB
34	80315	PRESSURE SWITCH
35	89586	BRASS TUBING CONNECTOR
36	80313	L190 SWITCH
37	80314	F-120 SWITCH
38	89601	BRASS SPRING
39	80356	WIRING HARNESS
40	80357	POWER SUPPLY CORD
41	89681	BRASS TRIM, RT. SIDE
42	89680	BRASS TRIM, TOP
43	89683	BRASS TRIM, LF. SIDE
44	23853	SHROUD, LF. SIDE
45	23856	SHROUD, TOP
46	23854	SHROUD, RT. SIDE
47	23843	HOPPER TOP
48	23855	FLUE COVER
49	89336	BRASS KNOB
*	88047	GLASS GASKET (3')

* NOT SHOWN

PELLET HEATER WIRING DIAGRAM



owners manual

HOW TO ORDER REPAIR PARTS

THIS MANUAL WILL HELP YOU TO OBTAIN EFFICIENT, DEPENDABLE SERVICE FROM THE HEATER, AND ENABLE YOU TO ORDER REPAIR PARTS CORRECTLY.

KEEP IN A SAFE PLACE FOR FUTURE REFERENCE.

WHEN WRITING, ALWAYS GIVE THE FULL MODEL NUMBER WHICH IS ON THE NAMEPLATE ATTACHED TO THE BACK OF THE HEATER.

WHEN ORDERING REPAIR PARTS OR OPTIONS, ALWAYS GIVE THE FOLLOWING INFORMATION AS SHOWN IN THIS LIST:

1. The PART NUMBER
2. The PART DESCRIPTION
3. The MODEL NUMBER: 5448 5440
4. The SERIAL NUMBER _____

BEFORE INSTALLING YOUR HEATER, CHECK THE ABOVE APPROPRIATE BOX AND FILL IN THE SERIAL NUMBER OF YOUR HEATER IN THE SPACES PROVIDED ABOVE.

UNITED STATES STOVE COMPANY

227 Industrial Park Road
P.O. Box 151
South Pittsburg, TN 37380
(615) 837-2100