

LENNOX[®]

HEARTH PRODUCTS

INSTALLATION INSTRUCTIONS

PHOTOEYE RELOCATION KIT
CAT NO. H0351, FOR MODEL PROFILE 20 FS

KIT CONTENTS:

- 1 Cover, Auger Tube, FFV
- 1 Cover, Photoeye
- 1 Bracket, Removable, Photoeye
- 1 Strain Relief
- 3 Cable Tie
- 3 Male Connectors
- 6 # 8 Tek Screw
- 1 Hole Template
- 1 Photoeye
- 1 Photoeye Jumper
- 1 Label, Operation Instructions

TOOLS REQUIRED:

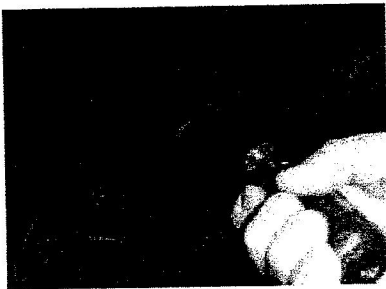
- 1/4" Nut Driver (Hand)
- 1/4" Nut Driver (Power)
- 1/4" Wrench
- 3/8" Drill Motor
- 11/32" Nut Driver Or Wrench
- 1/2" Drill Bit That Fits A 3/8" Chuck
- Wire Crimper
- RTV Sealant, Caulking Gun
- Scissors

INSTALLATION INSTRUCTIONS:

1. Remove screw from LHS panel and open to access.



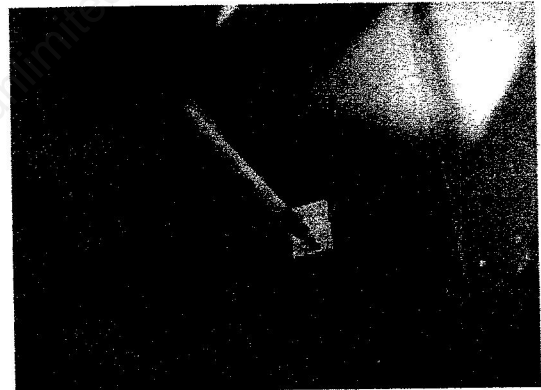
2. Remove Photoeye Cover Shield.



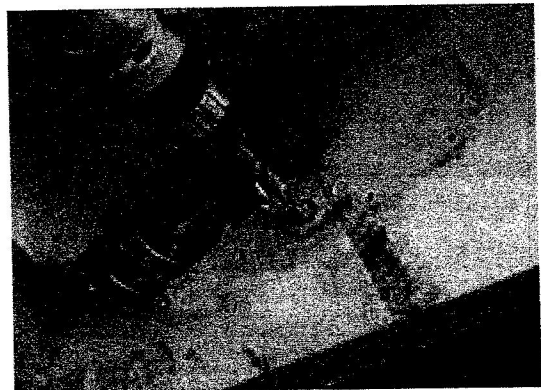
3. Remove auger tube cover and discard.

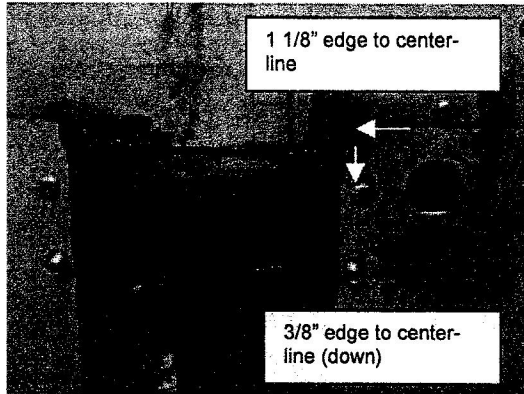


4. Position the hole template as shown and mark location.

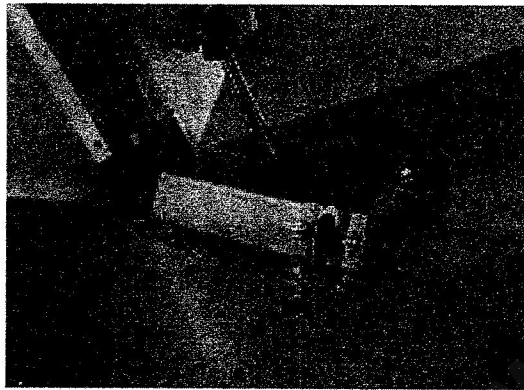


5. Drill out a 1/2" hole. Note location of hole (1 1/8" over and 3/8" down).

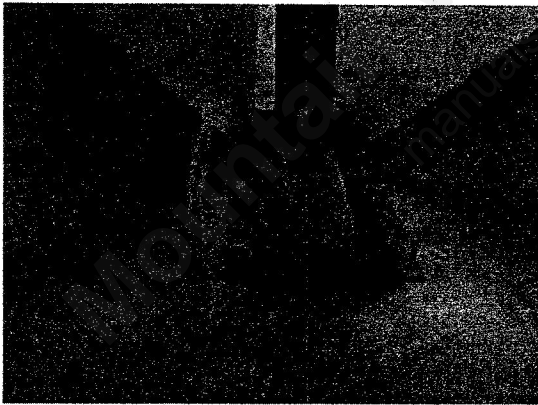




6. Install new Auger Tube Cover.



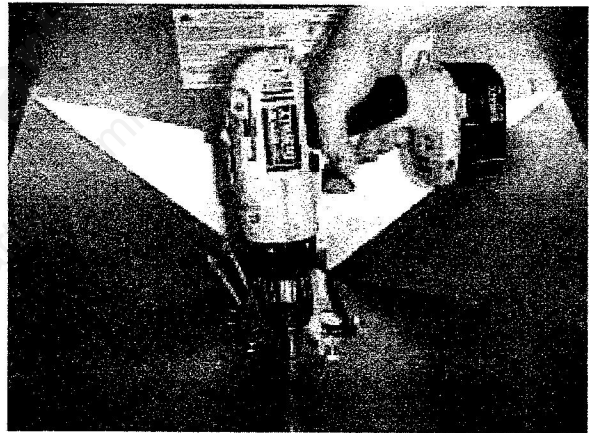
7. Route Photoeye Wires through 1/2\" hole leaving approximately 2\" of wire protruding through hopper.



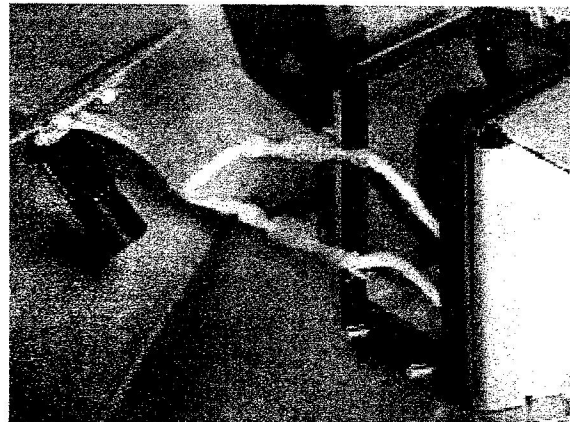
8. Add strain relief and male connectors as shown.



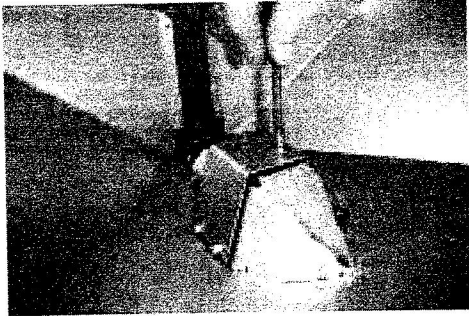
9. Place the new Photoeye cover over the wires and locate the tab into the slot on the auger cover. Attach the cover to the hopper with (4) tek screws.



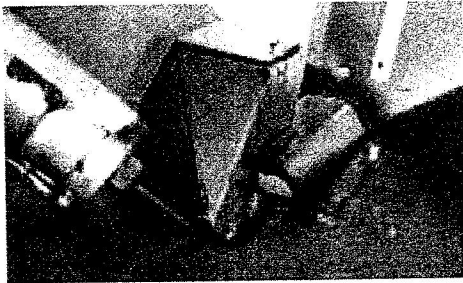
10. Connect photoeye to jumper as shown. Disconnect the wires from the original photoeye.



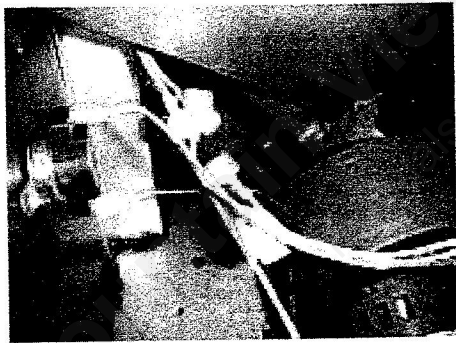
11. Install Panel with Photoeye installed onto the Photoeye cover using caution not to block the sight of the photoeye with the wires. Fasten Panel with (3) nuts.



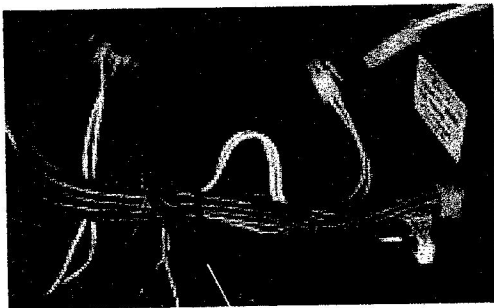
12. Seal cover to hopper with RTV to prevent pellet fines from entering the system on all sides.



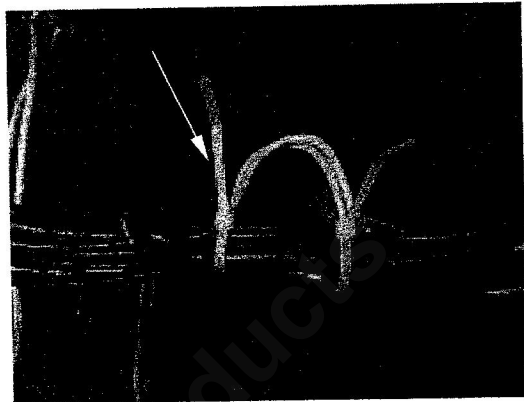
13. Disconnect the wires from the original photoeye.



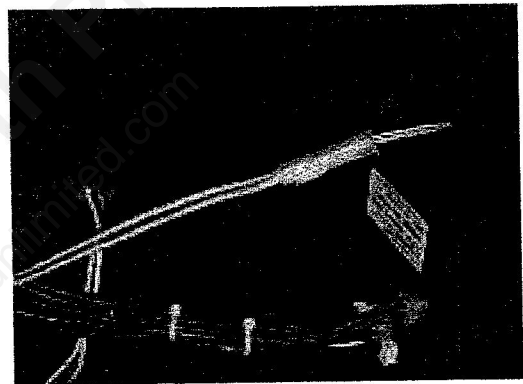
14. To remove the original photoeye jumper, get slack as shown.



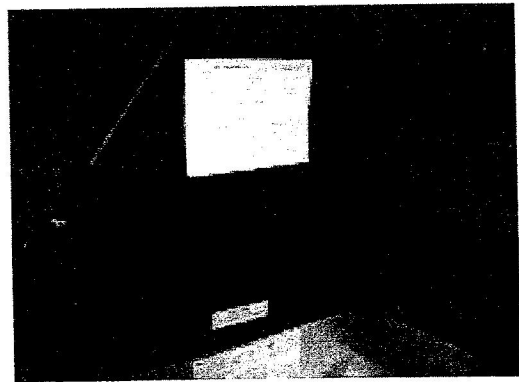
15. Install two cable ties. Cut off the original black ties (be careful not to damage harness)



16. Hook up new jumper to control board.



17. Peel the back off of the simple operating instructions and apply to the underside of the hopper lid.



18. Close and Fasten Side Panel. Procedure complete.