

## Freestanding Pellet Stoves/Inserts

### Whitfield:

Advantage I	P2
Advantage II	P4
Advantage II-T & III	P6
Advantage II-T Classic - WP2	P10
Advantage Optima 2 FS AO2, Optima 3 FS AO2, Optima 3 INS AO3	P14
Advantage Plus FS	P20
Advantage Plus INS	P22
BBQ, Pellet - WP6	P24
Cascade WP5	P25
Frontiersman, Explorer - WF2	P27
Legend - WP1	P28
Prodigy I & II - WP3	P29
Profile 20 FS / Profile 20 FS-2-P9	P31
Profile 30 FS / Profile 30 FS-2 - P10	P33
Profile 30 INS / Profile 30 INS-2 - P10	P35
Quest FS - WP4	P40
Quest INS - WP4	P42
Quest Plus FS - WP4	P44
Quest Plus INS - WP4	P46
Renaissance - WW1	P48

### Traditions:

T300P Series / T300P-2 Series (301/305/308/300)	P50
TP300 Series (300/301/305/308)	P54
TP40 / TP40N	P56
TP340 / TP440	P58

### Earth Stove:

FP60	P60
HP40	P61
HW040-BK/HW040-T & MPD040T	P63
HW070-BK/HW070-T & MPW070 / MPD070	P64
HWF040 & PCH040	P65
HWS040 & MPW040T	P66
HWS070 & MPW070	P67
HWI040	P68
MP35 / 50	P69
MP40	P71
MP240	P73
MP250	P75
NF2000	P77
NF2000I	P80
PI35	P83
RP45 (AC) / RP45BP (w/DC Kit)	P85
WP50	P86

### BrassFlame:

PF70 (FS) / PF70I (INS)	P88
-------------------------	-----

## LENNOX HEARTH PRODUCTS

### Service Replacement Parts List

### Advantage I

Pellet, Freestanding & Insert, WP2

MODEL YEARS: 1985 - 1989 (Serial # 1001 - 7400)

ITEM NO	DESCRIPTION
<b>Door Parts</b>	
12045105	Clip, Glass (bent) - 2 per pkg.
12045100	Clip, Glass (flat/side) - 2 per pkg.
61057201	Gasket Kit, Glass, WP2 (10 feet; 5/8", black with adhesive)
12146400	Glass, Center (13" x 9")
12146401	Glass, Side (4.3" x 9")
18140046	Handle Kit, Door (Oak) - 2 per pkg.
24220507	Hinge Pin, Door, Adv. I (1/4")
<b>Body Components</b>	
12055205	Clip for Brass Glass Trim - 12 per pkg.
12252900	Trim Kit, Brass (For Side Panel - Freestanding) - 2 per pkg.
12352901	Trim Kit, Brass (For Side Panel - Insert) - 2 per pkg.
<b>Electrical Parts</b>	
12056010	Blower Kit, Exhaust (Motor & Housing)
12156009	Blower, Exhaust Kit (Complete Teardown)
24220302	Blower, Room Air (gray; Dayton 4C006)
12147705	Disc, High Limit (L250-30F; 60T21, Bakolite) - 3 per pkg.
12057601	Disc, Low Limit (Ceramic, F140-30F; 49T style) - 3 per pkg.
61057210	Gasket, Exhaust Blower, Fan Mount, 5 per pkg.
61020015	Gasket, Exhaust Blower, Tear Down, 1 per pkg.
12056108	Impeller, Exhaust Blower
12046300	Motor, Auger (Drives pellet feed auger)
12050504	Potentiometer Kit, Feed Control (blue wires; replaces 6-second timer and potentiometer)
12058200	Power Cord w/Cable Connectors (8 ft.)
12145903	Pressure Switch
12056003	Hose, Pressure Switch, 19" (may need to be cut to size) - 3 per pkg.
24220901	Rheostat, Blower Speed Control
12050702	Switch, On/Off
21040407	Timer Kit, RK, WP1 (replaces OMRON and Dayton timers) Note: The OMRON H3BF is still available from W.W. Grainger under their part # 2A179, but is not covered under pellet stove warranty.
12040403	Timer, 1-second Recycling, SSAC
24220405	Timer, 30-minute, ACP, Adv. I
12040404	Timer, 30-minute, SSAC
<b>Auger System Components</b>	
12152202	Auger Shaft Kit (Includes set collar and screw)
12051100	Bushing, Auger (Oilite) - 12 per pkg.
12041300	Collar, Auger Set (Includes screw) - 3 per pkg.
61050003	Gasket, Auger End Plate (Neoprene) - 5 per pkg.
12153900	Plate, Auger End (w/ Nylotron Bushing)

<b>Miscellaneous Parts</b>	
61057204	Gasket, Ash Pan (flat 3/8" x 1/8" x 10')
19L92	Paint, Charcoal (12 oz. Spray #6201)
73020302	Paint, Flat Black (12 oz. Spray #6304)
73020303	Paint, Goldenfire Brown (12 oz. Spray #6230)
12150916	Scraper Rod Kit
61057206	Gasket, Donut Burnpot (1/4" x 2 1/2") - 12 per pkg.
<b>Firebox Parts</b>	
17100061	Baffle, Heat Exchange
24250800	Burnpot, Adv. I (*SN 1001 - 7216) Note: The Burnpot holds the Burn Grate, which is where the fire
24250700	Grate, Burn - Conventional Drop in Grate, WP2, ADV 1 S# 1001-7216
24256500	Firebrick Ceraboard Kit, 14 x 21 x 1", cut to fit

\* SN - Stove serial number range, parts are compatible with:

">" = greater than # indicated, "<" = less than # indicated, "-" = numbers within range.

## LENNOX HEARTH PRODUCTS

### Service Replacement Parts List

### Advantage II

Pellet, Freestanding & Insert, WP2

MODEL YEARS: 1989 - 1990 (Serial # 7401 - 18144)

ITEM NO	DESCRIPTION
<b>Door Parts</b>	
25220306	Bolt, Door Hinge Swing, WP2 (5/16"; to approx. *SN 9700)
12045105	Clip, Glass (bent) - 2 per pkg.
12045100	Clip, Glass (flat/side) - 2 per pkg.
61057100	Gasket Kit, Door Rope, WP2/WP4 (1/2" round; 7 ft.; firm)
61057201	Gasket Kit, Glass, WP2 (10 feet; 5/8", black with adhesive)
61057204	Gasket Kit, Glass/Ashpan, WP2 (10 feet; 3/8" x 1/8")
12146400	Glass, Center (13" x 9")
12146401	Glass, Side (4.3" x 9")
12054200	Handle Kit, Door, Oak, WP2/WP4 - 2 per pkg.
12140316	Latch Kit, Door (with Oak Handle) - Black
72045000	Shoulder Bolt Kit, Door Latch
72045001	Shoulder Bolt Kit, Door Latch Boss
<b>Body Components</b>	
12150600	Ash Pan Kit (through *SN 32210)
12055205	Clip for Brass Glass Trim - 12 per pkg.
12052901	Clip, Brass (For Side Panel Trim - 1 foot; must be cut to length)
12145200	Trim Kit, Brass (for Center Glass)
12145202	Trim Kit, Brass (for Side Glass, left and right side)
12352901	Trim Kit, Brass (for Side Panel - Insert) - 2 per pkg.
12252900	Trim Kit, Brass (For Side Panel, WP2 - Freestanding) - 2 per pkg.
12150607	Trim with Magnets, Ash Pan (Black)
12155002	Trivet, WP2 (*SN 7401 & up) - Black Painted
12155003	Trivet, WP2 (*SN 7401 & up) - Brown Painted (Obsolete, Limited Quantities Available)
Obsolete	Trivet, WP2 (*SN 7401 & up) - Slate Painted (Substitute 12155002)
<b>Electrical Parts</b>	
25244202	Transduct Adapter Kit, Room Air Blower, WP2 (*SN 7108 - 12102)
12056010	Blower Kit, Exhaust (Motor & Housing)
12156009	Blower, Exhaust, Teardown, Complete (Includes low limit disc, 12057601, and gasket, 61057210)
12146109	Blower, Room Air, Hardwasher (w/ 4 nuts) **
25250801	Control Board, RK, WP2 (SN 7401 - 18144)
12147705	Disc, High Limit (L250-30F; 60T21, Bakolite) - 3 per pkg.
12057601	Disc, Low Limit (Ceramic, F140-30F; 49T style) - 3 per pkg.
61057210	Gasket, Exhaust Blower Mounting (1/8" lytherm) - 5 per pkg.
61020015	Gasket, Exhaust Blower, Tear Down, 1 per pkg.
12056108	Impeller, Exhaust Blower
12051400	Knob, Control Board Heat Output (*SN 7401 & up) - 2 per pkg.
12046300	Motor, Auger (Drives pellet feed auger)
12058200	Power Cord w/ Cable Connectors (8 ft.)

13640014	Pressure (Vacuum) Switch Kit, WP2 (yellow label, *SN 10348 - 18144)
13656003	Hose, Pressure Switch, 19" (may need to be cut to size) - 3 per pkg.
12048001	Terminal Block Kit (8 position; screw terminals)
<b>Auger System Components</b>	
12041300	Collar, Auger Set Collar (Includes screw) - 3 piece
61050003	Gasket, Auger End Plate (Neoprene) - 5 per pkg.
12153900	Plate, Auger End (w/ Nylatron Bushing) WP2
12152202	Auger Shaft w/Collar and Screw
<b>Freestanding Only Parts</b>	
12252900	Trim Kit, Brass (for Side Panel, WP2 - Freestanding) - 2 per pkg.
<b>Insert Only Parts</b>	
12351411	Cover, Rear Hopper (Insert) - Black
12351412	Cover, Rear Hopper (Insert) - Brown
12351413	Cover, Rear Hopper (Insert) - Slate
12351414	Lid with Hinge, Hopper (WP2 - Insert) - Black
12351415	Lid with Hinge, Hopper (WP2 - Insert) - Brown
12351416	Lid with Hinge, Hopper (WP2 - Insert) - Slate
12301406	Lid, Hopper Front (Insert; old-style)
12352901	Trim Kit, Brass (For Side Panel - Insert) - 2 per pkg.
<b>Miscellaneous Parts</b>	
12151300	Damper (rod welded to plate; *SN <32210)
61057204	Gasket, Ash Pan
12125400	Handle, Damper (Spring-Type, 1-3/8"L x 5/16" Dia.)
73020304	Paint, Enamel, Metallic Gloss - Black
73020305	Paint, Enamel, Metallic Gloss - Brown
73020306	Paint, Enamel, Metallic Gloss - Slate
12151301	Plate, Damper Gasket - 6 per pkg.
12150916	Scraper Rod Kit, Tube (WP2 - *SN 1001 & up)
25220204	Tee, Air Bleed, WP2 (6532AA; *SN 7401 - 18144; allows air to pass through pressure tap to prevent blockage from fly ash)
12055500	Tool, Ash Pan/Grate Scraper
12021101	Bushing, Nylatron (.500 O.A.L.)
12051100	Bushing, Orlite
72023013	Nut, Hex (for Nylatron Bushing)
<b>Firebox Parts</b>	
12150800	Burnpot Kit (use with grate #12150700; *SN 7217 - 59831) Note: The Burnpot holds the Burn Grate, which is where the fire takes place.
12140102	Clip Kit, Firebrick (WP2 - pkg. of 2 clips w/fasteners) *SN < 18144
24256500	Firebrick Ceraboard Kit, 14 x 21 x 1" (cut to fit) *SN <18144
12146500	Firebrick Set (brick pattern; all 3 panels)
61057206	Gasket, Burnpot "O"-ring (WP2; 1-1/4" x 2.5") - 12 per pkg.
12150700	Grate (use with burnpot #12150800) *SN 7217 - 43377
12151264	UltraGrate Retrofit Kit with Base
12141920	Baffle, Heat Exchange

\* SN - Stove serial number range, parts are compatible with:

">" = greater than # indicated, "<" = less than # indicated, "-" = numbers within range.

\*\* Units within this serial number range, SN 7108-12102, will also require a Transduct Adaptor Kit (P/N 25244202) for this later style blower to fit (OR) order the old style blower (P/N 24220302).

## LENNOX HEARTH PRODUCTS

### Service Replacement Parts List

### Advantage II-T & III

Pellet, Freestanding & Insert, WP2

**ADVANTAGE II-T MODEL YEARS: 1990 - 2000 (Serial # 18145 & up)**

**ADVANTAGE III MODEL YEARS: 1991 - 1996 (Serial # 18145 & up)**

ITEM NO	DESCRIPTION
<b>Door Parts</b>	
12150505	Bracket Kit, Window Wash, '93 Adv. (through *SN 81338)
12150506	Bracket Kit, Window Wash, '94 Adv. (*SN 81339 & up)
12140510	Bracket, Door Hinge (WP2, *SN 42748 & up)
12045105	Clip, Glass (bent) - 2 per pkg.
12140225	Clip, Glass (bent/bottom) for Single-Piece Glass, Adv. III
12045100	Clip, Glass (flat/side) - 2 per pkg.
12150511	Door Assembly, Complete, Advantage III - Black
12150512	Door Assembly, Complete, Advantage III - Brown
12150514	Door Assembly, Complete, Advantage III - Slate
12150510	Door Assembly, Complete, Advantage II-T - Black (3 pc)
12150520	Door Assembly, Complete, Advantage II-T - Brown (3 pc)
12150540	Door Assembly, Complete, Advantage II-T - Slate (3 pc)
61057100	Gasket Kit, Door Rope (WP2/WP4; 1/2" round; 7 ft.; firm)
61057201	Gasket Kit, Glass (WP2; 10 feet; 5/8", black with adhesive)
12146402	Glass Kit, Replacement (Advantage III; Includes Gasket)
12146400	Glass, Center (13" x 9")
12146401	Glass, Side (4.3" x 9")
12054200	Handle Kit, Oak Door (WP2/WP4) - 2 per pkg.
12150507	Hinge Pin, Door (WP2/WP3; 5/16" x 1-1/2"; *SN 18145 & up) - 2 per pkg.
12051409	Knob, Control Panel Door (round, black) - 6 per pkg.
12140316	Latch Kit, Door (with Oak Handle) - Black
72045000	Shoulder Bolt Kit, Door Latch
72045001	Shoulder Bolt Kit, Door Latch Boss (WP2)
<b>Body Components</b>	
12055205	Clip for Brass Glass Trim - 12 per pkg.
12052901	Clip, Brass Clip (for Side Panel Trim; 1 foot - must be cut to length)
12145200	Trim Kit, Brass (for Center Glass)
12145202	Trim Kit, Brass (For Side Glass, left and right side)
12352901	Trim Kit, Brass (For Side Panel, WP2 - Insert) - 2 per pkg.
12252900	Trim Kit, Brass (for Side Panel; WP2 - Freestanding) - 2 per pkg.
12145203	Trim Kit, Brass (For Single-Piece Glass, WP2, Adv. III)
12155001	Trivet - Gold Plated
12155002	Trivet, WP2 (*SN 7401 & up) - Black Painted
12155003	Trivet, WP2 (*SN 7401 & up) - Brown Painted (Obsolete, Limited Quantities Available)
<b>Electrical Parts</b>	
12056010	Blower Kit, Exhaust (Motor & Housing)
12156009	Blower, Exhaust (Teardown, Complete)
12146109	Blower, Room Air (52L02)

12045901	Control Board Cable Assembly (6-pin connector)
12055902	Control Board Kit
12147705	Disc, High Limit (Bakolite, L250-30F; 60T21) - 3 per pkg.
12057601	Disc, Low Limit (Ceramic, F140-30F; 49T style) - 3 per pkg.
12155908	Fuse, 3.5-amp, Fast Acting (use with ICM control board) - 12 per pkg.
12055908	Fuse, 6-amp, Fast Acting, LF235006 (for SSAC control board) - 12 per pkg.
12155907	Fuse Holder, In-line (w/fuse)
12140213	Igniter Cartridge
12040003	Igniter Cartridge, 6 pack
12056108	Impeller, Exhaust Blower
12046300	Motor, Auger (Drives pellet feed auger)
72050004	Plug, Self-Igniter
12058200	Power Cord w/ Cable Connectors (8 ft.; *SN 1001 - 75863)
12058820	Power Cord with Molded End, Detachable (8 ft.; 52L17; *SN 75864 & up)
16050001	Pressure Switch Kit (FS6460-910;red label;shuts off auger if exhaust becomes blocked),12145903
12048001	Terminal Block Kit (8 position; screw terminals; *SN 7401 - 75863)
16050205	Thermostat, Wall, Honeywell
16020204	Wire, Thermostat, 20' coil - 18 gage
12158800	Wiring Harness, WP2 (*SN 75864 & up)
<b>Auger System Components</b>	
12152202	Auger Kit (auger and set collar/screw)
12051100	Bushing, Auger (Oilite) - 12 per pkg.
12041300	Collar, Auger Set Collar (Includes screw) - 3 per pkg.
61050003	Gasket, Auger End Plate (Neoprene) - 5 per pkg.
12153900	Plate, Auger End (w/ Nylontron Bushing)
<b>Ash Pan Door, Ash Trap Baffles &amp; Related Parts</b>	
12156500	Ash Pan (*SN 32211 & up)
12150600	Ash Pan (through *SN 32210)
12141920	Baffle Kit, Ash Trap, Adv. '94 (left and right side; *SN 75864 & up)
12157601	Door Assembly, Ash Pan (Adv. '94, *SN 75864 & up) - Black
12157602	Door Assembly, Ash Pan (Adv. '94, *SN 75864 & up) - Brown
12157603	Door Assembly, Ash Pan (Adv. '94, *SN 75864 & up) - Slate
12157510	Door w/ Slam Latch, Ash Pan (WP2, through *SN 59831) - Black
12157520	Door w/ Slam Latch, Ash Pan (WP2, through *SN 59831) - Brown
12157540	Door w/ Slam Latch, Ash Pan (WP2, through *SN 59831) - Slate
61057204	Gasket Kit, Ash Pan (3/8" x 1/8" x 10')
12151412	Knob, Ash Pan Door - 6 per pkg.
12121017	Knob, Ash Pan Slam Latch, WP2 - pkg. of 12
12121007	Latch, Ash Pan Slam, WP2
12040609	Magnet, Ash Pan Trim (2" x 3/4" x 1/4") - 3 per pkg.
12140104	Plug Kit, Ash Slide
12055500	Scraper Tool, Ash Pan/Grate
12107800	Striker, Ash Pan (WP2, through *SN59831)
12150607	Trim, Ash Pan with Magnets (*SN 32211 & up) - Black, 12150606
12150608	Trim, Ash Pan with Magnets (*SN 32211 & up) - Brown
12150609	Trim, Ash Pan with Magnets (*SN 32211 & up) - Slate
<b>Freestanding Only Parts</b>	
12251406	Lid Assembly, Hopper (with hinge; Freestanding) - Black, 12251405
12251407	Lid Assembly, Hopper (with hinge; Freestanding) - Brown
12251408	Lid Assembly, Hopper (with hinge; Freestanding) - Slate

12252523	Panel, EZ Open, Left Side (*SN 42728 & up) - Black, 12254000
12252524	Panel, EZ Open, Left Side (*SN 42728 & up) - Brown
12252525	Panel, EZ Open, Left Side (*SN 42728 & up) - Slate
12252526	Panel, EZ Open, Right Side (*SN 42728 & up) - Black, 12256000
12252527	Panel, EZ Open, Right Side (*SN 42728 & up) - Brown
12252528	Panel, EZ Open, Right Side (*SN 42728 & up) - Slate
12252601	Panel, Rear Inspection - Black
12252602	Panel, Rear Inspection - Brown
12252603	Panel, Rear Inspection - Slate
12251401	Panel, Top, FJS, Black
12251402	Panel, Top, FJS, Brown
12251403	Panel, Top, FJS, Slate
12252900	Trim Kit, Brass (for Side Panel, WP2 - Freestanding) - 3 per pkg.
<b>Insert Only Parts</b>	
12351411	Cover, Rear Hopper (Insert) - Black
12351412	Cover, Rear Hopper (Insert) - Brown
12351413	Cover, Rear Hopper (Insert) - Slate
12355410	Hearth Support Kit, (Insert Pedestal; WP2 ; Black)
12355420	Hearth Support Kit, (Insert Pedestal; WP2 ; Brown)
12355440	Hearth Support Kit, (Insert Pedestal; WP2 ; Slate)
12351414	Lid with Hinge, Hopper (WP2, Insert) - Black
12351415	Lid with Hinge, Hopper (WP2, Insert) - Brown
12351416	Lid with Hinge, Hopper (WP2, Insert) - Slate
12352521	Panel, EZ Open, Left Side (Insert; *SN 42728 & up) - Black
12352522	Panel, EZ Open, Left Side (Insert; *SN 42728 & up) - Brown
12352523	Panel, EZ Open, Left Side (Insert; *SN 42728 & up) - Slate
12352525	Panel, EZ Open, Right Side (Insert; *SN 42728 & up) - Black
12352526	Panel, EZ Open, Right Side (Insert; *SN 42728 & up) - Brown
12352527	Panel, EZ Open, Right Side (Insert; *SN 42728 & up) - Slate
12351407	Panel, Top Front - Black
12351408	Panel, Top Front - Brown
12351409	Panel, Top Front - Slate
12352901	Trim Kit, Brass (for Side Panel - Insert) - pkg. of 2
12325000	Trim Kit, Surround Extension, WP2
12348000	Trim, Gold Surround (for large Surround)
12347000	Trim, Gold Surround (for medium Surround)
12346000	Trim, Gold Surround (for small Surround)
<b>Miscellaneous Parts</b>	
12140103	Air Deflector Plate Kit, Room Air, WP2 (*SN 42728 - 58924)
12050039	Casting, Aluminum Exhaust Transduct (*SN 66080 & up)
12055205	Clip, Window Trim (12 per pkg.)
12151307	Collar, Damper Rod Set (Includes Screw; 1/4" I.D.; *SN 18145 - 32210) - 4 per pkg.
12151300	Damper (rod welded to plate; through *SN 32210)
12125400	Handle, Damper (Spring-Type, 1-3/8"L x 5/16"Dia.; through *SN 32210)
12154201	Handle, Oak Damper (*SN 32211 & up) - 3 per pkg.
12056003	Hose, Pressure Switch
61050003	Gasket, Auger
61057210	Gasket, Exhaust Blower Mounting (1/8" lytherm) - 5 per pkg.

61020015	Gasket, Exhaust Blower, Tear Down, 1 per pkg.
61057203	Gasket, Room Air Blower (5 per pkg.)
13656003	Hose, Pressure Switch, 19" (may need to be cut to size) - 3 per pkg.
12056003	Hose, Pressure Switch, WP2 (orange; silicone; 1/4" dia. x 4.5") - 3 per pkg.
12051400	Knob, Control Board Heat Output (*SN 7401 & up) - 2 per pkg.
73020304	Paint, Enamel, Metallic Gloss - Black
73020305	Paint, Enamel, Metallic Gloss - Brown
73020306	Paint, Enamel, Metallic Gloss - Slate
12151308	Plate Assembly, Damper (use with #12121306; *SN 32211 & up)
12151301	Plate, Damper Gasket - 6 per pkg.
72050004	Plug, Self-Igniter
12151306	Rod Kit, Damper (1/4" rod; includes Allen wrench; *SN 32211 & up)
12150916	Scraper Rod Kit, Tube (WP2, *SN 1001 & up)
12055600	Wrench, Damper Hex, WP2 (3/32") - 6 per pkg.
<b>Firebox Parts</b>	
12150804	Burnpot & Grate Kit (2.5")
12150802	Burnpot & Grate Kit (4-1/2"; *SN 18145 - 59831)
12150803	Burnpot Kit (without grate; *SN 59832 & up) Note: The Burnpot holds the UltraGrate, which is where the fire takes place.
12150800	Burnpot w/ Gasket (4-1/2" long tube; use with grate #12150700; *SN 7217 - 59831)
12140102	Clip Kit, Firebrick (WP2) - 2 clips w/ fasteners
12146500	Firebrick Set (brick pattern; all 3 panels)
61057206	Gasket, Burnpot "O"-ring (WP2; 1-1/4" x 2.5") - 12 per pkg.
12150700	Grate (use with burnpot #12150800; *SN 7217 - 43377)
12150002	Log Set, Oak Ceramic
12151264	UltraGrate w/Base, 10 Rod, Retrofit Kit (*SN 1001 & up) - Note: This replaces the 14 bar grate, 12150812.
12051263	UltraGrate, 10 Rod (Replacement grate only for 12151264)
17100061	Baffle, Heat Exchange

\* SN - Stove serial number range, parts are compatible with:

">" = greater than # indicated, "<" = less than # indicated, "-" = numbers within range.

## LENNOX HEARTH PRODUCTS

### Service Replacement Parts List

### Advantage II-T Classic

Pellet, Freestanding & Insert, WP2

MODEL YEARS: 2002 + (Serial # 75864 & up)

ITEM NO	DESCRIPTION
<b>Door Parts</b>	
12140510	Bracket, Door Hinge
12151505	Bracket Kit, Window Wash
12150500	Door Assembly, Complete, Advantage II-T Classic- Black (3 pc)
61057100	Gasket Kit, Door Rope (WP2/WP4; 1/2" round; 7 ft.; firm)
61057201	Gasket Kit, Glass (WP2; 10 feet; 5/8", black with adhesive)
12146400	Glass, Center (13" x 9") (with gasket)
12146401	Glass, Side (4.3" x 9") (with gasket)
12054200	Handle Kit, Oak Door (WP2/WP4) – 2 per pkg.
12150507	Hinge Pin, Door (WP2/WP3; 5/16" x 1-1/2") – 2 per pkg.
12054500	Latch Kit, Door (with Oak Handle) – Black
12140102	Retainer, Brick (Right and Left)
12145200	Trim, Brass Center Glass
12151505	Window Wash Kit
<b>Body Components</b>	
12055205	Clip for Brass Glass Trim – 12 per pkg.
12145200	Trim Kit, Brass (for Center Glass)
12145202	Trim Kit, Brass (For Side Glass, left and right side)
12155000	Trivet, WP2 – Black Painted
12252003	Advantage II-T Pedestal
<b>Electrical Parts</b>	
12156009	Blower, Exhaust (Teardown, Complete)
52L02	Blower, Room Air
12055912	Control Board Kit
12147705	Disc, High Limit (Bakolite, L250-30F; 60T21) – 3 per pkg.
12057601	Disc, Low Limit (Ceramic F140-30F) – 3 per pkg.
12155908	Fuse, Control Board (3.5 amp, Fast blow, 250 vac, 12 per pkg.)
12055908	Fuse, Igniter (6 amp, Fast blow, 12 per pkg.)
12155907	Fuse, In-Line Holder With Fuse
12056003	Hose, Pressure Switch, WP2 (orange; silicone; 1/4" dia. X 4.5") – 3 per pkg.
12140213	Igniter Cartridge (probe, 400W)
12040003	Igniter Cartridge, 6 pack
12046300	Auger, Motor (Drives pellet feed auger)
12058820	Power Cord with Molded End, Detachable (8 ft.; 52L17)
12145903	Pressure Switch Kit (FS6460-910; red label; shuts off auger if exhaust becomes blocked)
16050205	Thermostat, Wall, Honeywell
12158811	Wiring Harness, WP2

**Auger System Components**

12152202	Auger Kit (auger and set collar/screw)
12041300	Collar, Auger (includes set screw)
61050003	Gasket, Auger End Plate (Neoprene) – 5 per pkg.
20950088	Plate, Auger End (w/nylatron bushing)

**Ash Pan Door, Ash Trap Baffles & Related Parts**

12156500	Ash Pan
12157600	Door Assembly, Ash Pan – Black
61057204	Gasket Kit, Ash Pan (3/8" x 1/8" x 10')
12055500	Scraper Tool, Ash Pan/Grate
12150606	Trim, Ash Pan with Magnets – Black

**Freestanding Only Parts**

12251405	Lid with Hinge, Hopper (Freestanding) - Black
12254000	Panel, EZ Open, Left Side - Black
12256000	Panel, EZ Open, Right Side – Black
12255001	Panel, Top, F S, Black
12252900	Trim Kit, Brass (for Side Panel, WP2 – Freestanding) – 3 per pkg.

**Insert Only Parts**

12351405	Lid with Hinge, Hopper (Insert) – Black
12354000	Panel, EZ Open, Left Side (Insert) – Black
12355000	Panel, EZ Open, Right Side (Insert) – Black
12351401	Panel, Top Front – Black
12352901	Trim Kit, Brass (for Side Panel – Insert) – 2 per pkg.

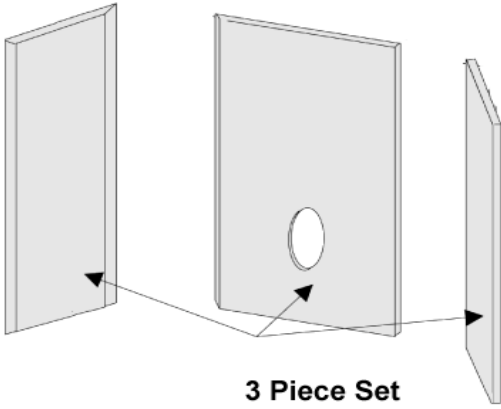
**Miscellaneous Parts**

12150003	Accessory Package
12141920	Baffle Kit, Ash Trap (Left and Right)
12050039	Casting, Aluminum Exhaust
12050039	Casting, Aluminum Exhaust Transduct
12151307	Collar, Damper Rod
61050003	Gasket, Auger End Plate - (5 per pkg.)
61057210	Gasket, Exhaust Blower Mounting (1/8" lytherm) – 5 per pkg.
61057203	Gasket, Room Air Blower, 5 per pkg. (neoprene rubber gasket)
12154201	Handle, Damper (3 per pkg.)
12151308	Plate Kit, Damper (use with 12151306 Damper Rod Kit)
12151306	Rod Kit, Damper (1/4" rod; includes Allen wrench)
12100906	Rod, Heat Exchange Scraper
12120011	Video

**Firebox Parts**

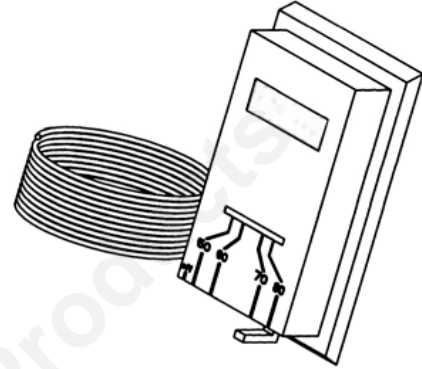
12146500	Firebrick Set (brick pattern; all 3 panels)
12051263	UltraGrate®, 10 Rod

**Firebrick Kit**

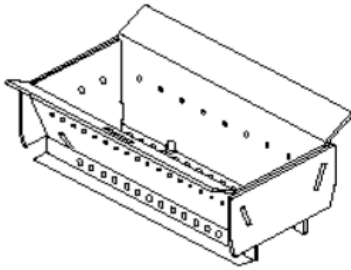


**3 Piece Set**

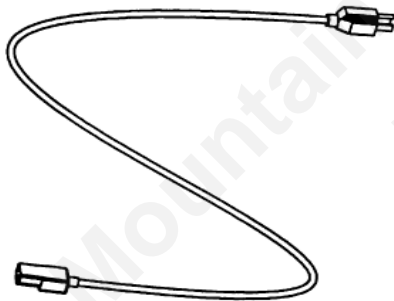
**Wall Thermostat Kit  
(Includes 20' of Wire)**



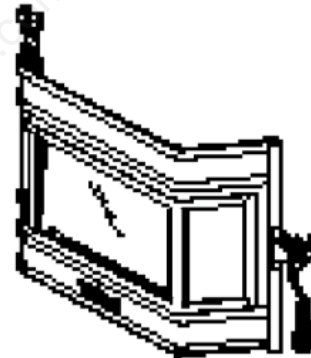
**UltraGrate™ Kit**



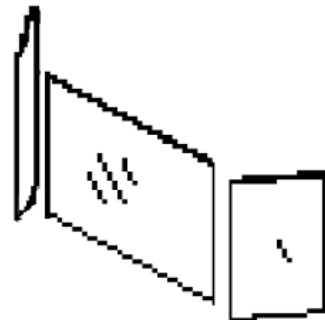
**Power Cord Kit**



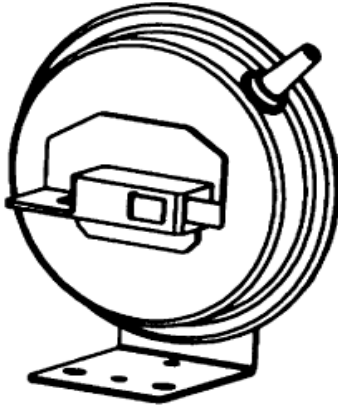
**Door Assembly**



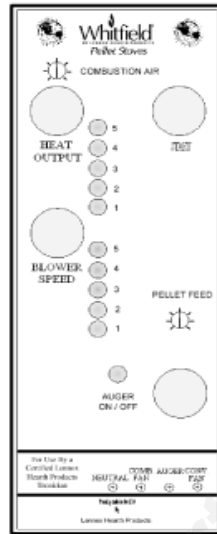
**Glass  
(Order each pc. separately. Gasket Included)**



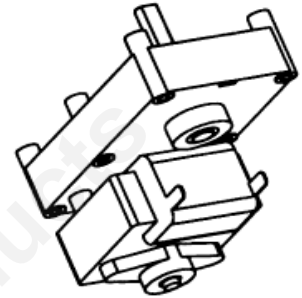
**Pressure Switch Kit  
(hose not included)**



**Control Board**



**Auger Motor**



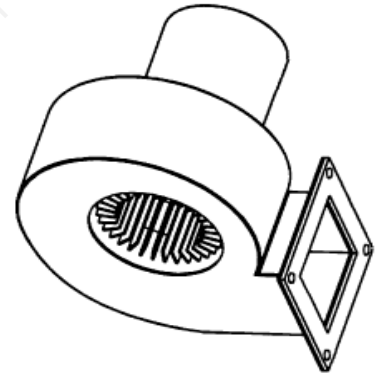
**Auger Set Collar**



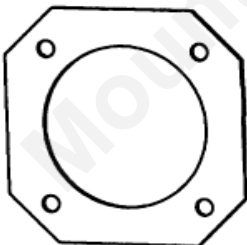
**Damper Rod**



**Room Air Blower**



**Auger End Plate Gasket**



**Exhaust Blower**



**LENNOX HEARTH PRODUCTS****Service Replacement Parts List****Models Advantage Optima 2 FS, Optima 3 FS & Optima 3 INS**

Freestanding and Insert Pellet Stoves

MODEL YEARS: 2002 - present

ITEM NO	DESCRIPTION	Stove Model
<b>Door Parts &amp; Body Components</b>		
14650414	Ash Pan Cover	Optima 2 FS
14750460	Ash Pan Cover	Optima 3 FS
14750605	Ash Pan Cover	Optima 3 INS
14650460 (*2)	Door Assembly, Cast Iron Firebox	Optima 2 FS
14750458 (*2)	Door Assembly, Cast Iron Firebox	Optima 3 FS & INS
26M81	Gasket Kit, Door, 3/4" Rope, (10 Ft.)	Optima 2 FS
61051000	Gasket Kit, Door, 1" Rope, (7 Ft.)	Optima 3 FS & INS
61057202	Gasket Kit, Glass (5/8" x 1/16" x 10 Ft.)	All
H0257	Glass, Front, Includes gasket	Optima 2 FS
H0258	Glass, Side (order 2 if set is needed), Includes gasket	Optima 2 FS
H0254	Glass, Front, Includes gasket	Optima 3 FS & INS
H0255	Glass, Side (order 2 if set is needed) Includes gasket	Optima 3 FS & INS
14650446 (*5)	Hinge Bracket	Optima 2 FS
14750700 (*6)	Hinge Bracket	Optima 3 FS & INS
13740005	Hopper Lid Hinge Brackets	Optima 2 FS & 3 FS
11950068	Hopper Lid Hinge Brackets	Optima 3 INS
14750406 (*3)	Knob Kit, Door (includes latch, 3 washers, nut and door latch receiver)	All
14750405 (*4)	Opener, Door Handle	All
14650450 (*7)	Panel, Left Side	Optima 2 FS
14650451 (*8)	Panel, Right Side	Optima 2 FS
14750449 (*9)	Panel, Left Side	Optima 3 FS
14750448 (*10)	Panel, Right Side	Optima 3 FS
14650456 (*11)	Panel, Rear	Optima 2 FS
14750465 (*12)	Panel, Rear	Optima 3 FS
14750612 (*13)	Panel, Left Side	Optima 3 INS
14750613 (*14)	Panel, Right Side	Optima 3 INS
14750617 (*15)	Panel, Top (hopper lid)	Optima 3 INS
14650455 (*16)	Panel, Top (hopper lid)	Optima 2 FS
14750455 (*16)	Panel, Top (hopper lid)	Optima 3 FS
12051409	Knob, Control Panel Door (6 per package w/studs)	Optima 3 INS
<b>Electrical Parts</b>		
12046300 (*17)	Auger Motor	All
12146109 (*28)	* Blower, Convection, Hard Washer ( Includes gasket and four nuts)	All
12050011 (*27)	Blower, Exhaust	All
16053941 (*18)	Control Board	Optima 2 FS
16052112 (*18)	Control Board	Optima 3 FS & INS
12147705 (*19)	Disc, High Limit, 250 DG (L250-30F,60T21) Set of 3	All

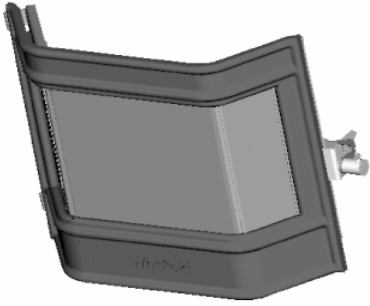
18150150	Fuse, Control Board, 5 Amp, 250 volt, Fast blow, 12 pk.	All
12055908	Fuse, Igniter, 6 Amp, 125 volt, Fast blow, 12 pk.	All
12140213 (*20)	Igniter Probe, 400 W, 4.8 A	All
14750404 (*22)	Photoeye Kit, Replacement	All
12058820 (*23)	Power Cord, 8 feet	All
16050001 (*25)	Pressure Switch	All
16050205 (*24)	Thermostat, Wall	All
12050815 (*26)	Wiring Harness	All
<b>Firebox Parts</b>		
13640028 (*29)	Clips, Brick	Optima 2 FS
11750011 (*30)	Clips, Brick	Optima 3 FS & INS
14750469	Firebox Baffle	Optima 3 FS & INS
13650046	Firebox Baffle	Optima 2 FS
14650011 (*31)	Firebrick Set, 1 pc.	Optima 2 FS
14750015 (*32)	Firebrick Set, 3 pc.	Optima 3 FS & INS
14650428 (*33)	Housing, Igniter Tube	Optima 2 FS
14750421 (*34)	Housing, Igniter Tube	Optima 3 FS & INS
12158905 (*35)	UltraGrate™	All
<b>Auger System Components</b>		
11756300 (*40)	Auger Shaft	All
12051001 (*36)	Bumper, Auger (Set of 5)	All
12041300 (*37)	Collar & Screw Set, Auger (Set of 3)	All
20950088 (*38)	Flange, Auger (end plate)	All
<b>Miscellaneous</b>		
14650408	Ash Pan	Optima 2 FS
14750409	Ash Pan	Optima 3 FS
14750603	Ash Pan	Optima 3 INS
12151307	Collar, Damper Rod St, 1/4" (w/set screw)	Optima 2 FS & 3 FS
12151309	Damper Rod, Complete	Optima 2 FS & 3 FS
14750312	Damper Rod, Complete	Optima 3 INS
11750004	Damper Rod, Knob (6 per pack)	All
17150009 (*39)	Rod Kit, Scraper (includes rod, collar and knob)	All
15050058 (*41)	Filter, Photoeye	All
14650060	Gasket, Photoeye	Optima 2 FS
14750060	Gasket, Photoeye	Optima 3 FS & INS
61050003 (*42)	Gasket, Auger Flange, 5pc.	All
61050005 (*43)	Gasket, Exhaust blower, 5pc.	All
61057203 (*44)	Gasket, Room air blower, 5pc.	All
61050016 (*45)	Gasket, Quick Disconnect 5pc.	All
12055500 (*46)	Tool, Grate Scraper	All
12050093 (*47)	Quick Disconnect 3" Vent Side	All
16020011	Video, Advantage Optima	All

Pellet

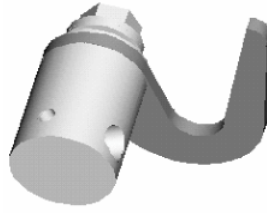
Advantage Optima 2 FS,  
Optima 3 FS, Optima 3 INS

Whitfield

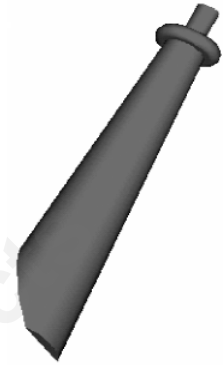
2



3



4



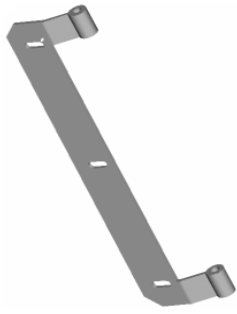
Mountain View Hearth Products  
manuals.stove-parts-unlimited.com

Pellet

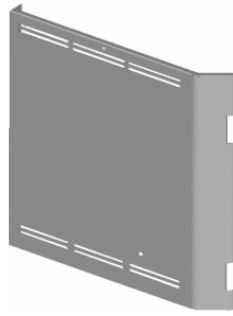
Advantage Optima 2 FS,  
Optima 3 FS, Optima 3 INS

Whitfield

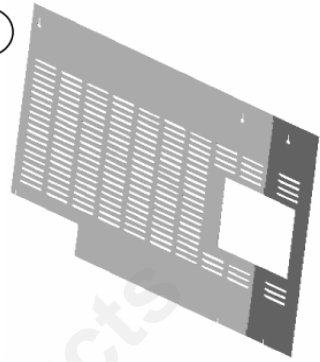
5



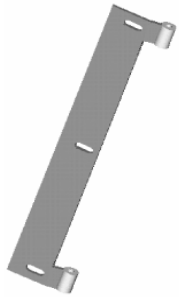
9



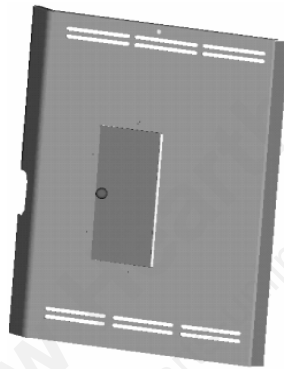
12



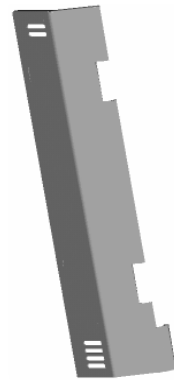
6



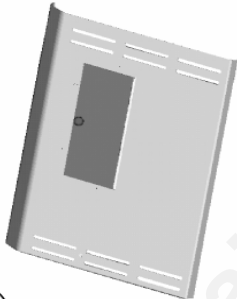
10



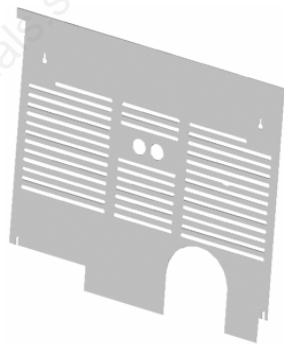
13



7



11



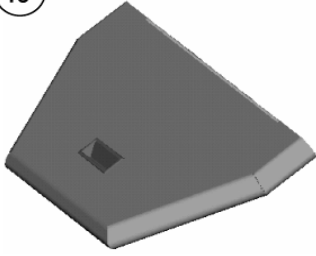
14



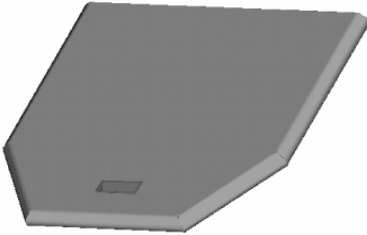
8



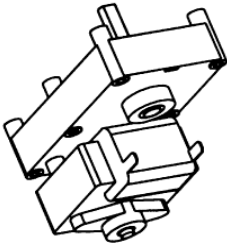
15



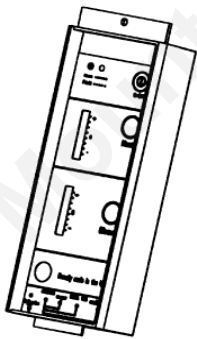
16



17



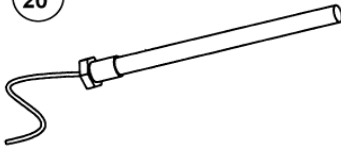
18



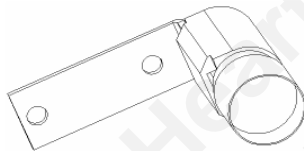
19



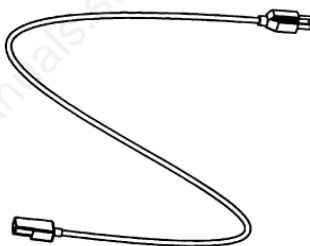
20



22



23



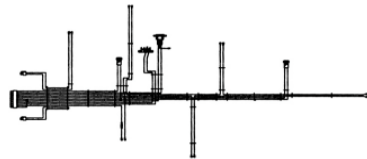
24



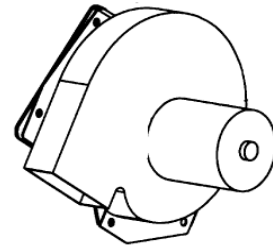
25



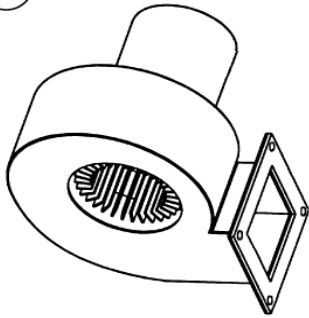
26



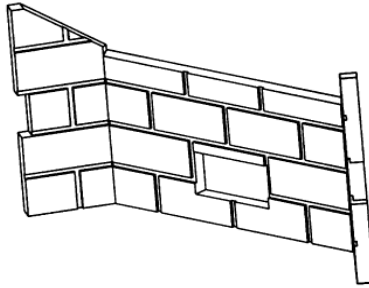
27



28



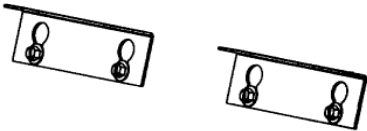
32



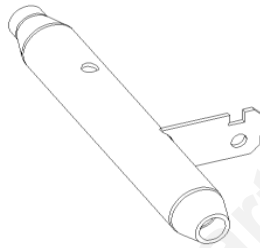
37



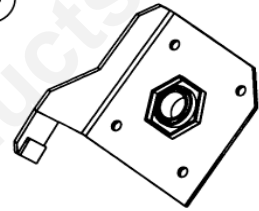
29



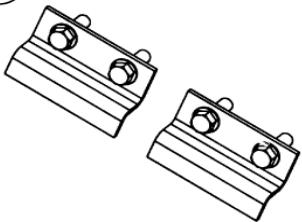
33



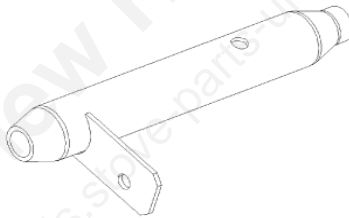
38



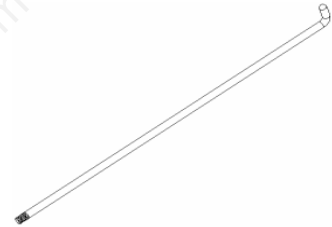
30



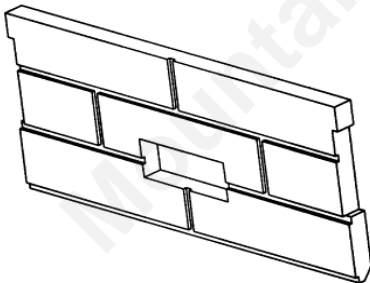
34



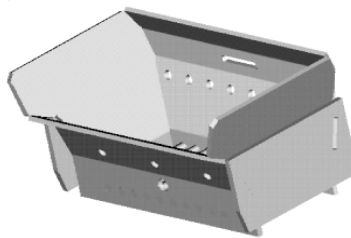
39



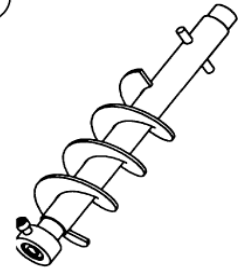
31



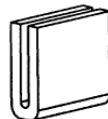
35



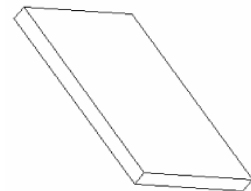
40



36



41



## LENNOX HEARTH PRODUCTS

### Service Replacement Parts List

### Advantage Plus FS

Pellet, Freestanding, WP7  
MODEL YEARS: 1996 - 2000

ITEM NO	DESCRIPTION
<b>Door Parts</b>	
18140046	Bracket, Hinge
11750100	Door Assembly (Black) Painted
11750300	Door Assembly (Brown) Painted
11750500	Door Assembly (Green) Painted
11750400	Door Assembly (Slate) Painted
61057100	Gasket Kit, Door (7' of 1/2" Firm)
61057208	Gasket Kit, Glass
12146402	Glass Kit, Door (Includes Gasket)
11750003	Handle, Gold Door
11750123	Hinge Pins, Gold
<b>Body Components</b>	
13740005	Bracket, Hopper Lid Support (F/S)
11850147	Panel, Side, LHS, (Black) Powder Coated
11850347	Panel, Side, LHS, (Brown) Powder Coated
11850547	Panel, Side, LHS, (Green) Powder Coated
11850447	Panel, Side, LHS, (Slate) Powder Coated
11850148	Panel, Side, RHS, (Black) Powder Coated
11850348	Panel, Side, RHS, (Brown) Powder Coated
11850548	Panel, Side, RHS, (Green) Powder Coated
11850448	Panel, Side, RHS, (Slate) Powder Coated
11850146	Panel, Top (Black) Powder Coated
11850346	Panel, Top (Brown) Powder Coated
11850546	Panel, Top (Green) Powder Coated
11850446	Panel, Top (Slate) Powder Coated
11855100	Pedestal w/ Ashpan (Black) Powder Coated
11855100PT	Pedestal w/ Ashpan (Blade) Painted
11855300	Pedestal w/ Ashpan (Brown) Powder Coated
11855500	Pedestal w/ Ashpan (Green) Powder Coated
11855400	Pedestal w/ Ashpan (Slate) Powder Coated
11851151	Trim, Bottom (Black) Painted
11853151	Trim, Bottom (Brown) Painted
11855151	Trim, Bottom (Green) Painted
11854151	Trim, Bottom (Slate) Painted
11850158	Trim, Brass (Set)

<b>Electrical Parts</b>	
12046300	Auger Motor
12056010	Blower Kit, Exhaust (Motor & Housing)
12156009	Blower Kit, Exhaust (Teardown, Complete)
12146109	Blower, Room Air
12055902	Control Board
12147705	Disc, High Limit (L250-30F; 60T21) - 3 per pkg.
12057601	Disc, Low Limit (Ceramic,F140-30F; 49T style) - 3 per pkg.
61020015	Gasket, Exhaust Blower, Tear Down, 1 per pkg.
61057210	Gasket, Exhaust Blower Mounting (1/8" Lythron) - 5 per pkg.
61057203	Gasket, Room Air Blower - 5 per pkg.
13656003	Hose, Pressure Switch, 19" (may need to be cut to size) - 3 per pkg.
12140213	Igniter Probe (cartridge), Heater, WP2,4,7, 400W, 4.8A
12058820	Power Cord, Molded End
16050001	Pressure Switch
16050205	Thermostat, Wall, Honeywell (Thermostat Wire, P/N 16020204, is not included)
<b>Auger System Components</b>	
11756300	Auger Shaft Kit
12041300	Collar, Damper Rod Set (Includes Screw) - 3 per pkg.
12153900	End Plate, Auger (w/ Nylatron Bushing)
61050003	Gasket, Auger End Plate - 5 per pkg.
<b>Miscellaneous Parts</b>	
61040040	Gasket, 3" Quick Disconnect -10 per pkg.
12051500	Quick Disconnect, 3"
11751305	Rod, Damper
17150009	Rod, Scraper
12055500	Tool, Ash Pan / Grate Scraper
12021101	Bushing, Nylatron 1/2"
72023013	Nut, Hex (for Nylatron Bushing)
<b>Firebox Parts</b>	
11750031	Baffle, Heat exchange
11750011	Clips, Brick
11750015	Firebrick Set
11750013	Firebrick-Rear Panel Only (Obsolete - limited quantities available)
11750001	Log Set, Oak (Obsolete - limited quantities available)
16050246	UltraGrate Replacement

## LENNOX HEARTH PRODUCTS

### Service Replacement Parts List

### Advantage Plus INS

Pellet, Insert, WP7

MODEL YEARS: 1996 - 2000

ITEM NO	DESCRIPTION
<b>Door Parts</b>	
18140046	Bracket, Hinge
11750100	Door Assembly (Black) Painted
11750300	Door Assembly (Brown) Painted
11750500	Door Assembly (Green) Painted
11750400	Door Assembly (Slate) Painted
61057100	Gasket Kit, Door (7' of 1/2" Firm)
61057208	Gasket Kit, Glass
12146402	Glass Kit, Door (Includes Gasket)
11750003	Handle, Gold Door
11750123	Hinge Pins, Gold
<b>Body Components</b>	
11951163	Ashpan, Lower, Black, Powder Coated
11953163	Ashpan, Lower, Brown, Powder Coated
11955163	Ashpan, Lower, Green, Powder Coated
11954163	Ashpan, Lower, Slate, Powder Coated
11950052	Ashpan, Upper, Black, Painted Only
11950068	Bracket, Hopper Lid Support (Insert Only)
11951167	Panel, Left Side, Black, Powder Coated
11953167	Panel, Left Side, Black, Powder Coated
11954167	Panel, Left Side, Black, Powder Coated
11955167	Panel, Left Side, Black, Powder Coated
11951168	Panel, Right Side, Black, Powder Coated
11953168	Panel, Right Side, Brown, Powder Coated
11955168	Panel, Right Side, Green, Powder Coated
11954168	Panel, Right Side, Slate, Powder Coated
11951166	Panel, Top, Black, Powder Coated
11953166	Panel, Top, Brown, Powder Coated
11955166	Panel, Top, Green, Powder Coated
11954166	Panel, Top, Slate, Powder Coated
11958121PT	Surround, Large, Black, Painted
11958120	Surround, Large, Black, Powder Coated
11958220	Surround, Large, Brown, Powder Coated
11958520	Surround, Large, Green, Powder Coated
11958420	Surround, Large, Slate, Powder Coated
11957121PT	Surround, Medium, Black, Painted
11957120	Surround, Medium, Black, Powder Coated
11957220	Surround, Medium, Brown, Powder Coated
11957520	Surround, Medium, Green, Powder Coated

11957420	Surround, Medium, Slate, Powder Coated
11956121PT	Surround, Small, Black, Painted
11956120	Surround, Small, Black, Powder Coated
11956220	Surround, Small, Brown, Powder Coated
11956520	Surround, Small, Green, Powder Coated
11956420	Surround, Small, Slate, Powder Coated
<b>Electrical Parts</b>	
12046300	Auger Motor
17100061	Baffle, Heat Exchange
12056010	Blower Kit, Exhaust (Motor & Housing)
12156009	Blower, Exhaust Kit (Teardown, Complete)
12147705	Disc, High Limit (L250-30F; 60T21) - 3 per pkg.
12057601	Disc, Low Limit (Ceramic, F140-30F, 49T style) - 3 per pkg.
61057210	Gasket, Exhaust Blower Mounting (1/8" Lyther) - 5 per pkg.
61020015	Gasket, Exhaust Blower, Tear Down, 1 per pkg.
61057203	Gasket, Room Air Blower - 5 per pkg.
12058820	Power Cord, Molded End
16050001	Pressure Switch
13656003	Hose, Pressure Switch, 19" (may need to be cut to size) - 3 per pkg.
16050205	Thermostat, Wall, Honeywell (Thermostat Wire, P/N 16020204, is not included)
12158800	Wiring Harness
<b>Auger System Components</b>	
11756300	Auger Shaft Kit
12041300	Collar, Damper Rod Set (Includes Screw) - 3 per pkg.
61050003	Gasket, Auger End Plate - 5 per pkg.
12153900	Plate, Auger End (w/ Nylatron Bushing)
<b>Miscellaneous Parts</b>	
61040040	Gasket, 3" Quick Disconnect -10 per pkg.
12051500	Quick Disconnect, 3"
11751305	Rod, Damper
17150009	Rod, Scraper
12055500	Tool, Ash Pan / Grate Scraper
16020204	Wire, Thermostat, 20' coil - 18 gage
12021101	Bushing, Nylatron 1/2"
72023013	Nut, Hex (for Nylatron Bushing)
<b>Firebox Parts</b>	
11750031	Baffle, Heat exchange
11750011	Clips, Brick
11750015	Firebrick Set
11750013	Firebrick-Rear Panel Only (Obsolete - limited quantities available)
11750001	Log Set, Oak (Obsolete - limited quantities available)
16050246	UltraGrate, Replacement

## LENNOX HEARTH PRODUCTS

### Service Replacement Parts List

### BBQ Pellet Grill (WP6)

MODEL YEARS: 1996 - 1997

ITEM NO	DESCRIPTION
18190085	Auger Shaft Kit
18150047	Baffle, Flame
18150057	Baffle, Flame Stand, Short
18150051	Baffle, Flame Stand, Tall
18150007	Cap, Left Bottom End ♦
18150004	Cap, Left Top End ♦
18150006	Cap, Right Bottom End ♦
18150008	Cap, Right Top End ♦
18156200	Control, ACP #606
18158811	Cooking Grid, Wire Enamel (2 ea)
18150162	Disc, High Limit
18150150	Fuse, 6-amp (Pkg of 12)
18150005	Handle, Clamshell Top (2 each) ♦
18150034	Housing, Hopper (Front) ♦
18150076	Hub, Wheel, Black Hat Style (5 each) ♦
18150050	Igniter w/o sleeve - new grill
18150000	Igniter w/sleeve - old grill
18150157	Knob, Controller
18156300	Motor, Auger
18150123	Motor, Exhaust Blower
18150175	Name Plate ♦
18150090	Pin Kit, Hinge (2 sets per kit), includes T Bridge Pin
18158200	Power Cord, 10'
18158813	Rack, Lower Storage (2 each) ♦
18150033	Rack, Warming ♦
18158810	Rocker Switch w/Light
18150105	Shelf, Front ♦
18150045	Shelves, Side (2 each) ♦
18150170	Thermometer ♦
18152201	Wiring Harness w/Fuse

♦ Obsolete - limited quantity available

## LENNOX HEARTH PRODUCTS

### Service Replacement Parts List

### Cascade

Pellet, Freestanding, WP5  
MODEL YEARS: 1995 - present

ITEM NO	DESCRIPTION
<b>Door Parts</b>	
17151220	Door Assembly, Brown Metallic
14M44	Door Assembly, Gold
17151210	Door Assembly, Painted, Metallic Black > S# 7422
17157100	Gasket Kit, Door and Glass
17150084	Glass, Door (Includes clips, screws and gasket)
17150086	Handle Assembly, Painted, Metallic Black
17151086	Handle Assembly, Painted, Metallic Brown
<b>Body Components</b>	
17150046	Ashlip with Gold Tone Trim, Painted, Metallic Black
17150012	Ashlip, Painted, Metallic Brown
17152018	Ashpan Assembly, Black
17151018	Ashpan Assembly, Brown
17150030	Leg Set, Painted, Metallic Black
17151032	Leg Set, Painted, Metallic Brown
17150147	Louver Assembly, Painted, Metallic Black
17100161	Panel, Back, Metallic Black, Painted > S# 7422
17151117	Panel, Back, Brown, Golden Fire, Paint
17152118	Panel, Left Side, Black
17151118	Panel, Left Side, Brown, Golden Fire, Paint
17150163	Panel, Left, Painted, Metallic Black > S# 7422
17151119	Panel, Right Side, Brown, Golden Fire, Paint
17150164	Panel, Right Side, Painted, Metallic Black > S# 7422
17151116	Panel, Top, Brown, Golden Fire, Paint
17150150	Panel, Top, Painted, Metallic Black (Hopper lid) > S# 7422
<b>Electrical Parts</b>	
12046300	Auger Motor (Helix)
17140110	Blower Kit, Exhaust & Room Air
17150027	Control Board
12150162	Disc, High Limit, Room Air Blower Jacket (L190-20F, Bakolite) Pkg. of 3
12150080	Disc, Low Limit, Fan (F140-10F, Bakolite), Pkg. of 3
12055908	Fuse, 6 Amp, Fast Acting, Pkg. of 12
61057210	Gasket, Exhaust Blower, 1/8" Lytherm (Pkg. of 5)
61057203	Gasket, Room Air Blower (Pkg. of 5)
12058820	Power Cord (52L17)
17150075	Pressure / Vacuum Switch (Hose, 12056003, not included)
12056003	Hose, Pressure Switch
17150126	Wiring Harness

<b>Auger System Components</b>	
17150239	Auger, Shaft
12051001	Bumper, Auger (Pkg. of 5)
12041300	Collar & Screw Set, Auger (Pkg. of 3)
17150058	Plate, Auger End
61050003	Gasket, Auger Flange
<b>Miscellaneous Parts</b>	
12050004	Brush, Cleaning
12021101	Bushing, Nylatron
12051100	Bushing, Oilite
17150029	Damper Rod Assembly, Kit, Black (w/ handle)
17151029	Damper Rod Assembly, Kit, Brown
61040040	Gasket, 3" Quick Disconnect (Pkg. of 10)
12151412	Knob, Ashpan (Pkg. of 6)
17150028	Knob, Control Board (Slide), Set of 3
17100034	Plate, Ash Clean-Out, Left
17100035	Plate, Ash Clean-Out, Right
14M80	Quick Disconnect Kit
12055500	Tool, Grate Scraper
<b>Firebox Parts</b>	
17100061	Baffle, Heat Exchange
17150025	Firebrick and Retainer Clips
16050246	UltraGrate, Replacement

## LENNOX HEARTH PRODUCTS

### Service Replacement Parts List

### Frontiersman (WF2) / Explorer (WF1)

MODEL YEAR: 1989 - 1990 (Serial #1001 & Up)

ITEM NO	DESCRIPTION
<b>Door Parts</b>	
12045105	Clip, Glass (bent) - pkg. of 2
12045100	Clip, Glass (flat/side) - pkg. of 2
12054200	Handle Kit, Oak, Door (WP2/WP4) - pkg. of 2
<b>Electrical Parts</b>	
12056010	Blower, Exhaust (Motor & Housing)
12156009	Blower, Exhaust (Teardown, Complete. Includes low limit disc, 12057601, and gasket, 61057210)
22026300	Motor, Auger - WF
12050504	Potentiometer Kit, Feed Control (blue wires; replaces 6-second timer and potentiometer)
12050701	Switch, Momentary Start
12050702	Switch, On/Off
12040403	Timer, 1-second Recycling, SSAC
<b>Miscellaneous Parts</b>	
73020304	Paint, Enamel, Metallic Gloss - Black (54-H-240)
73020305	Paint, Enamel, Metallic Gloss - Brown (54-H-840)
73020306	Paint, Enamel, Metallic Gloss - Slate (54-H-440)
<b>Firebox Parts</b>	
22020302	Firebrick, Side Panel, WF (white) Obsolete - limited quantities available
24256500	Firebrick Set (cut to size)

## LENNOX HEARTH PRODUCTS

### Service Replacement Parts List

### Legend (WP1)

MODEL YEAR: 1984 - 1987 (Serial #1001 - 6177)

ITEM NO	DESCRIPTION
<b>Door Parts</b>	
21054800	Clip Kit, Glass, WP1
21020003	Glass, Door, WP1 (6-1/2" x 9") Includes Gasket
<b>Electrical Parts</b>	
12046300	Motor, Auger (Drives pellet feed auger)
12156009	Blower, Exhaust, Teardown, Complete (Includes low limit disc, 12057601, and gasket, 61057210)
21020301	Blower, Room Air, WPI (Dayton 4C443A)
12147705	Disc, High Limit (L250-30F; 60T21, Bakolite) - pkg. of 3
12057601	Disc, Low Limit, Ceramic (F140-30F; 49T style) - pkg. of 3
12056010	Blower, Exhaust (Motor & Housing)
12056108	Impeller, Exhaust Blower
12050504	Potentiometer Kit, Feed Control (blue/yellow wires; replaces 6-second timer and potentiometer)
12058200	Power Cord w/Cable Connectors (8 ft.)
12050701	Switch, Momentary Start
12050702	Switch, On/Off
21040407	Timer Kit, RK, WP1 (replaces OMRON and Dayton timers) Note: The OMRON H3BF is still available from W.W. Grainger under their part # 2A179, but is not covered under pellet stove warranty
12040403	Timer, 1-second Recycling, SSAC
24220405	Timer, 30 minute, ACP (note: If both timers need replacing use kit 21040407)
12040404	Timer, 30-minute, SSAC
<b>Auger System Components</b>	
12051100	Auger Bushing, Oilite - pkg. of 12
61050003	Auger End Plate Gasket, Neoprene - pkg. of 5
12153900	Auger End Plate w/Oilite Bushing, WP2
12152202	Auger Kit (auger and set collar/screw)
12046300	Auger Motor (Drives pellet feed auger)
12041300	Auger Set Collar/Screw - Pkg. of 3
<b>Firebox Parts</b>	
21050800	Burnpot, WP1 (to be used with #21000705) Note: The Burnpot holds the Burn Grate, which is where the fire takes place.
21020101	Firebrick, Back Panel, WP1 (white)
21020102	Firebrick, Side Panel, WP1 (white)
21050705	Grate, Drop-In, Stainless Steel, WP1
21050700	Grate, Flat, WP1 (1984-86 models without separate burnpot & grate)
24256500	Firebrick Set (cut to size)

## LENNOX HEARTH PRODUCTS

### Service Replacement Parts List

### Prodigy I & II WP3

Pellet, Freestanding, WP3

MODEL YEARS: 1990 - 1994 (Serial # 1001 & up)

ITEM NO	DESCRIPTION
<b>Door Parts</b>	
72045001	Shoulder Bolt Kit, Door Latch Boss
61057101	Gasket Kit, Door, WP3/WW1 (3/8", medium, black rope)
13546400	Glass, Center, (8-9/16" x 9-7/8")
13546401	Glass, Side, (3-1/4" x 8-9/16")
12054200	Handle, Door, Oak - 2 per pkg.
12150507	Hinge Pin, Door (WP2/WP3; 5/16" x 1-1/2") - 2 per pkg.
72045000	Shoulder Bolt Kit, Door Latch
<b>Body Components</b>	
13553600	Ash Pan Kit
12055205	Clip for Brass Glass Trim - 12 per pkg.
13525200	Trim, Brass (for Center Glass)
13525202	Trim, Brass (for Side Glass)
<b>Electrical Parts</b>	
13556214	Blade, Exhaust Blower Motor Cooling Fan (Outside; 5/16" hub for C-Frame motor)
13546210	Blower Motor, Exhaust (C-Frame, Booster, Neg. Pressure Extracts Exhaust to Vent ) w/ Cooling Fan Blade (*SN 2282 & up)
13046109	Blower, Hall Effect Room Air and Exhaust (use with SSAC control board; *SN 2282 & up. Functions as Neg. Press Comb. Air (push) into firebox and Room Air Blower.
12146109	Blower, Room Air (*SN 1001 - 2281)
13045900	Control Board, WW1/WP3 (ICM brand or equivalent; *SN 1001 - 2281) Obsolete - Limited quantities available.
13057801	Disc, High Limit (250 Degrees F.; 36T style) - 4 per pkg.
12057601	Disc, Low Limit (Ceramic, F140-30F; 49T style) - 3 per pkg.
13556212	Impeller, Exhaust Blower Motor (Exhaust; 1/4" blade - orig. equip.)
12051400	Knob, Control Board Heat Output - 2 per pkg.
13050002	Microswitch Kit, (*SN 2283 & up) Set of 3
12046300	Motor, Auger Motor (Drives pellet feed auger)
13025903	Pressure Switch Kit (FS6569-1018; B.P. @ +.10 in. W.C.; blue label)
13656003	Hose, Pressure Switch, 19" (may need to be cut to size) - 3 per pkg.
12058200	Power Cord
12055907	Fuse, 2.5 Amp (Ser. #1001-2282)
12055908	Fuse, 6 Amp (Ser. #2283-Up)
13545903	Relay, Exhaust Blower Motor
13045909	Relay, Latch-out (*SN 1001 - 2281)
13020003	Spring, Microswitch Actuation, WW1/WP3 (conical)
16050205	Thermostat, Wall, Honeywell (Wire, 16020204, not included)
16020204	Wire, Thermostat, 20' coil - 18 gage

<b>Auger System Parts</b>	
13052100	Auger Shaft Kit
12051100	Bushing, Auger (Oilite) - 12 per pkg.
61050003	Gasket, Auger End Plate (Neoprene) - 5 per pkg.
13052000	Plate, Auger End, WW1/WP3
<b>Miscellaneous Parts</b>	
61020002	Gasket, Exhaust Connector
61020001	Gasket, Exhaust Duct Plug (round, lytherm)
13522404	Grommet, Bottom Plate (3/4" O.D. x 5/16" I.D.)
73020303	Paint, 12 oz. Spray - Goldenfire Brown (6230)
13540001	U-Tube Removal Kit, Secondary Air - 1992, Prodigy WP3 S# 1001-3786, Suggestion: WP3-II Models Only – Serial Numbers 2283 through 3517 – It is recommended, but not necessary, that the Optional Booster Motor Upgrade Kit (PN 13546210) also be installed.
12041300	Set Collar w/Set Screw
14000906	Scraper Rod, 1/4" diameter, Tube (bent) **
14020906	Scraper Rod, 3/16" diameter, Tube (bent) **
<b>Firebox Parts</b>	
13053200	Burnpot Note: The Burnpot holds the Burn Grate, which is where the fire takes place.
13053100	Burnpot/Grate Kit, WW1/WP3 Note: The Burnpot holds the Burn Grate, which is where the fire takes
13046500	Firebrick Kit (ceramic fiber board and clips)
61057207	Gasket, Burnpot/Secondary Air Tube "O"-ring (WW1/WP3) - 12 per pkg.
13053500	Grate (*SN 1001 & up)

\* SN - Stove serial number range, parts are compatible with:

">" = greater than # indicated, "<" = less than # indicated, "-" = numbers within range.

\*\* Measure the diameter of the original scraper rod to determine which kit is needed.

## LENNOX HEARTH PRODUCTS

### Service Replacement Parts List

**(≤ Serial # 7494) Profile 20 FS and Profile 20 FS-2 (> Serial #7495)**

Pellet, Freestanding, P9

MODEL YEARS: 2000 - 2002

ITEM NO	DESCRIPTION
<b>Door Parts</b>	
13640075	Clip Kit, Glass Bottom
13640086	Clip Kit, Glass Right + Left Side
13640085	Clip Kit, Glass Top
14650006 (*1)	Door Assembly, Firebox (with 3 Piece Glass)
61057202	Gasket Kit, Glass, 10 ft.
26M81	Gasket, Door, 3/4" Rope, 8 ft.
H0257	Glass, Center ♦
H0258	Glass, Side (Order 2 if set is needed. Gasket included) ♦
17250095 (*3)	Handle Assembly, Door
14650047 (*5)	Hinge Bracket
<b>Body Components</b>	
14650003 (*7)	Panel, Left Side
14650048 (*11)	Panel, Rear
14650004 (*8)	Panel, Right Side
14650012 (*16)	Panel, Top
14695000	Pedestal, Profile 20
<b>Electrical Parts</b>	
12046300 (*18)	Auger Motor
12050011 (*43)	Blower, Exhaust
12146109 (*44)	Blower, Room Air, Hard Washer *
16053941 (*19)	Control Board
12147705 (*20)	Disc, High Limit, 250 DG (L250-30F,60T21) - 3 per pkg.
18150150	Fuse, Control Board, 5 Amp, 250 volt, Fast blow, 12 per pkg.
12055908	Fuse, Igniter, 6 Amp, 125 volt, Fast blow, 12pk.
13656003	Hose, Pressure Switch, 19" (may need to be cut to size) - 3 per pkg.
12140213 (*21)	Igniter Probe, 400 W, 4.8 A
14750404 (*22)	Photoeye Kit, Replacement (w/bracket) - Serial #7495 and up (units with Serial # lower than #7495 order Kit P/N H0351 (relocates Photoeye to top of auger tube at hopper)
H0351	Photoeye relocation kit Serial # <7495 (relocates photoeye to top of auger tube)
12058820 (*24)	Power Cord, 8 feet (52L17)
16050001 (*26)	Pressure Switch
16050205 (*25)	Thermostat, Wall, Honeywell (Thermostat Wire, P/N 16020204, is not included)
16020204	Wire, Thermostat, 20' coil - 18 gage
12050815 (*27)	Wiring Harness

<b>Auger System Components</b>	
11756300 (*37)	Auger Shaft Kit
12051001 (*34)	Bumper, Auger (5 per pkg.)
12041300 (*35)	Collar & Screw Set, Auger (3 per pkg.)
20950088 (*36)	Plate, Auger End (Flange)
<b>Miscellaneous Parts</b>	
11950068	Bracket, Hopper Lid Support
12021101	Bushing, Nylatron 1/2"
20M97	Enhancement Kit (includes pressure switch and auger bumper)
61050003 (*39)	Gasket, Auger Flange, 5 per pkg..
61050005 (*40)	Gasket, Exhaust Blower, Fan Mount, 5 per pkg.
61050041	Gasket, Exhaust Blower, Tear Down, 5 per pkg.
61050016 (*42)	Gasket, Quick Disconnect 5 per pkg..
61057203 (*41)	Gasket, Room Air Blower, 5 per pkg..
12151306	Handle, Damper (1/4" Rod and Allen Wrench)
11720004	Knob, Damper
12051409	Knob, Door (6 per pkg.)
70K99	Paint, Metallic Black (12 oz Spray # 6309)
H0262	Plug, Feed Tube Slot Cover - Prevents excess pellet dust from becoming airborne for units with additional slot on opposite side of photoeye slot in feed tube (facing unit, the plug covers the slot on the right side of feed tube (units prior to 12/2001)
14M81	Quick Disconnect 4" (QDPC - 4)
12050093 (*46)	Quick Disconnect 3"
14750014	Scraper Rod Kit, Replacement (Fits - Profile Series, Freestanding & Insert)
12055500 (*45)	Tool, Grate Scraper
<b>Firebox Parts</b>	
13650046	Baffle, Heat Exchange
13640028 (*29)	Clips, Brick
14650011 (*31)	Firebrick Set
H0244	Log Set, DLS-P20
12051263 (*33)	UltraGrate, Replacement

♦ Includes gasket.

\* Includes gasket and four nuts.

**See Component Diagrams on pages P37 - P39**

## LENNOX HEARTH PRODUCTS

### Service Replacement Parts List

**(≤ Serial #11904) Profile 30 FS and Profile 30 FS-2 (> Serial #11905)**

Pellet, Freestanding, P10

MODEL YEARS: 2000 - 2002

ITEM NO	DESCRIPTION
<b>Door Parts</b>	
14750027	Clip Kit, Glass Bottom (Doors w/ 1pc glass)
14750264	Clip Kit, Glass Top Bottom (Doors w/ 3pc glass)
14750111	Door Assembly, Firebox, (with 1 Piece Glass)
H0297 (*2)	Door Assembly, Firebox, DK-P30 (with 3 Piece Glass) *SN > 14708999
26M81	Gasket Kit, Door, ¾" Rope, 8 ft. (units with 1 piece glass)
61051000	Gasket Kit, Door, 1" Rope, 7 ft. (units with 3 piece glass)
61057202	Gasket Kit, Glass (10 Ft.)
12146402	Glass, Front (units with 1 pc. glass) ♦
H0254	Glass, Front (units with 3 pc. glass) ♦
H0255	Glass, Side (order 2 if set is needed) (units with 3 pc. glass) ♦
17150095 (*4)	Handle Assembly, Door
14750021 (*6)	Hinge Bracket
<b>Body Components</b>	
14750070 (*9)	Panel, Left Side
14750150 (*12)	Panel, Rear
14750075 (*10)	Panel, Right Side
14750060 (*16)	Panel, Top
14750186 (*17)	Pedestal Assembly
<b>Electrical Parts</b>	
12050011 (*43)	Blower, Exhaust
12146109 (*44)	Blower, Room Air (Hard Washer) Includes gasket and four nuts.
16052112 (*19)	Control Board
12147705 (*20)	Disc, High Limit, 250 DG (L250-30F,60T21) 3 per pkg.
18150150	Fuse, Control Board, 5 Amp, 250 volt, Fast blow, 12 per pkg.
12055908	Fuse, Igniter, 6 Amp, 125 volt, Fast blow, 12 per pkg.
61050041	Gasket, Exhaust Blower, Tear Down, 5 per pkg.
61050005 (*40)	Gasket, Exhaust Fan, Fan Mount, 5 per pkg.
61057203 (*41)	Gasket, Room Air Fan, 5 per pkg.
12140213 (*21)	Igniter Probe, 400 W, 4.8 A
12046300 (*18)	Motor, Auger
14750404 (*22)	Photoeye Kit, Replacement (w/bracket) - Serial #11905 and up (units with Serial # lower than #11905 order Kit P/N H0330 (relocates Photoeye to top of auger tube at hopper)
H0330	Photoeye relocation kit Serial # <11905 (relocates photoeye to top of auger tube)
12058820 (*24)	Power Cord, 8 feet (52L17)
16050001 (*26)	Pressure Switch
13656003	Hose, Pressure Switch, 19" (may need to be cut to size) - 3 per pkg.
13050002 (*28)	Switch, Door (3 per pkg.; 52L20)
16050205 (*25)	Thermostat, Wall (Wire, 16020204, not included)
12050815 (*27)	Wire Harness
16020204	Wire, Thermostat, 20' coil - 18 gage

<b>Auger System Components</b>	
11756300 (*37)	Auger Shaft Kit
12051001 (*34)	Bumper, Auger, 5 per pkg.
12041300 (*35)	Collar & Screw Set, Auger, 5 per pkg.
17250241 (*36)	End Plate, Auger (Flange)
<b>Miscellaneous Parts</b>	
13740005	Bracket, Hopper Lid Support
12050004 (*38)	Brush, Cleaning
12021101	Bushing Nylatron 1/2"
12151306	Damper Rod Kit
20M96	Enhancement Kit, Profile 30FS - includes Pressure Switch, Control Board, Auger Bumper, Ash Slide and Cleaning Brush
21M87	Enhancement Kit, Profile 30INS - includes Pressure Switch, Control Board, Auger Bumper
61050016 (*42)	Gasket, Quick Disconnect, 5 per pkg.
61050003 (*39)	Gasket, Auger Flange, 5 per pkg.
12051409	Knob, Control Board Door (6 per pkg.)
11720004	Knob, Damper
72023013	Nut, Hex (for Nylatron Bushing)
70K99	Paint Kit, Metallic Black (12 oz Spray #6309)
17100034	Plate, Ash Clean-Out, Left
17100035	Plate, Ash Clean-Out, Right
12050093	Quick Disconnect 3"
14M81	Quick Disconnect 4" (QDPC - 4)
12050093 (*46)	Quick Disconnect, 3"
14750014	Scraper Rod Kit, Replacement (Fits - Profile Series, Freestanding & Insert)
12055500 (*45)	Tool, Grate Scraper
<b>Firebox Parts</b>	
17100061	Baffle, Heat Exchange
11750011 (*30)	Clips, Brick
14750015 (*32)	Firebrick Set
H0245	Log Set, DLS-P30
12051263 (*33)	UltraGrate, Replacement

\* SN - Stove serial number range, parts are compatible with:

">" = greater than # indicated, "<" = less than # indicated, "-" = numbers within range.

♦ Includes gasket.

**See Component Diagrams on pages P37 - P39**

## LENNOX HEARTH PRODUCTS

### Service Replacement Parts List

**(≤ Serial #11904) Profile 30 INS and Profile 30 INS-2 (> Serial #11905)**

**Pellet, Insert**

**MODEL YEARS: 2000 - 2002**

ITEM NO	DESCRIPTION
<b>Door Parts</b>	
14750027	Clip Kit, Glass Bottom(w/ 1pc glass)
14750264	Clip Kit, Glass Top/Bottom (w/ 3pc glass)
14750111	Door Assembly, Firebox, (with 1 Piece Glass)
H0297 (*2)	Door Assembly, Firebox, DK-P30 (with 3 Piece Glass) *SN > 14708999
61057202	Gasket Kit, Glass (10 Ft.)
26M81	Gasket, Door, ¾" Rope, 10 ft. (units with 1 piece glass)
61051000	Gasket, Door, 1" Rope, 7 ft. (units with 3 piece glass)
12146402	Glass, Front (units with 1 pc. glass) ♦
H0254	Glass, Front (units with 3 pc. glass) ♦
H0255	Glass, Side (order 2 if set is needed) (units with 3 pc. glass) ♦
17150095 (*4)	Handle Assembly, Door
14750021 (*6)	Hinge Bracket
<b>Body Components</b>	
14750340 (*13)	Panel, Left Side
14750345 (*14)	Panel, Right Side
14750300 (*15)	Panel, Top
<b>Electrical Parts</b>	
12046300 (*18)	Auger Motor
12050011 (*43)	Blower, Exhaust
12146109 (*44)	Blower, Room Air, Hard Washer (Includes gasket and four nuts)
16052112 (*19)	Control Board
12147705 (*20)	Disc, High Limit, 250 DG (L250-30F,60T21) - 3 per pkg.
18150150	Fuse, Control Board, 5 Amp, 250 volt, Fast blow - 12 per pkg.
12055908	Fuse, Igniter, 6 Amp, 125 volt, Fast blow, 12pk.
13656003	Hose, Pressure Switch, 19" (may need to be cut to size) - 3 per pkg.
12140213 (*21)	Igniter Probe, 400 W, 4.8 A
14750404 (*22)	Photoeye Kit, Replacement (w/bracket) - Serial #11905 and up (units with Serial # lower than
H0330	Photoeye relocation kit Serial # <11905 (relocates photoeye to top of auger tube)
12058820 (*24)	Power Cord, 8 feet (52L17)
16050001 (*26)	Pressure Switch
13050002 (*28)	Switch, Door (52L20) - 3 per pkg.
16050205 (*25)	Thermostat, Wall (Wire, 16020204, not included)
12050815 (*27)	Wire Harness
16020204	Wire, Thermostat, 20' coil - 18 gage
<b>Auger System Components</b>	
12051001 (*34)	Bumper, Auger (5 per pkg.)
12041300 (*35)	Collar & Screw Set, Auger (3 per pkg.)
17250241 (*36)	Flange, Auger
61050003 (*39)	Gasket, Auger Flange, 5 per pkg.
11756300 (*37)	Shaft, Auger

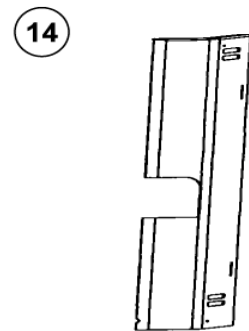
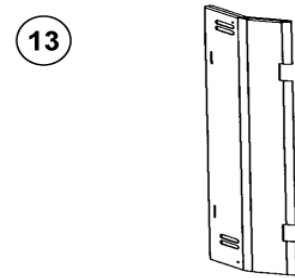
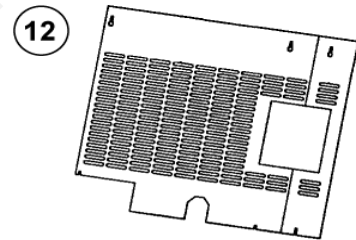
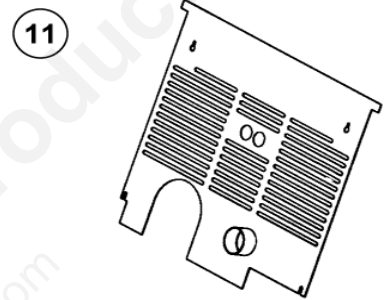
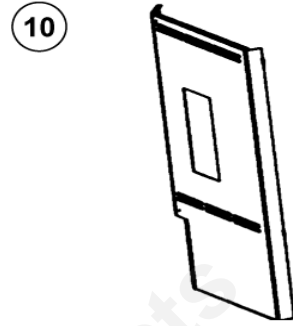
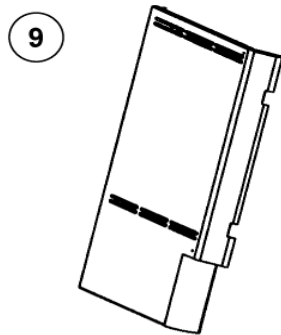
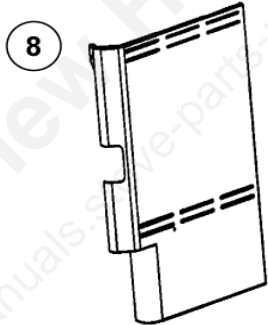
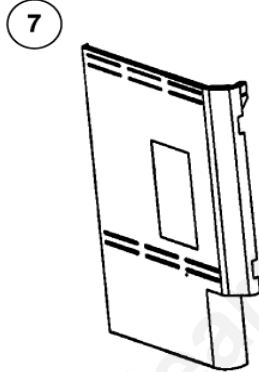
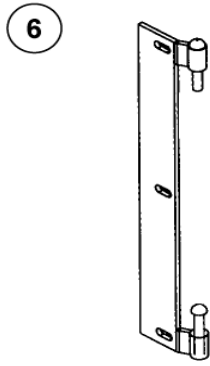
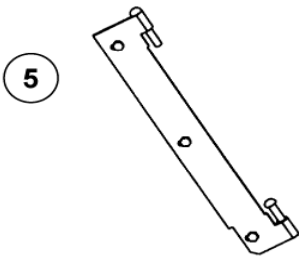
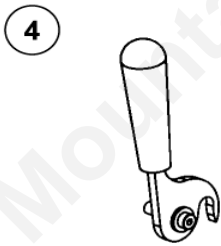
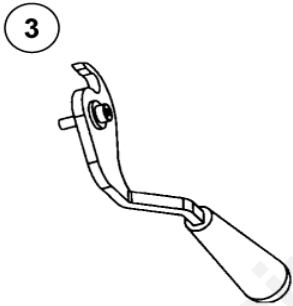
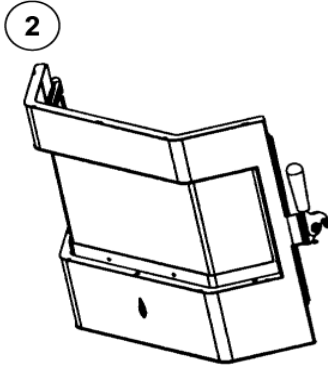
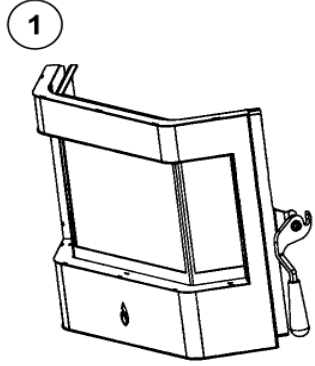
<b>Miscellaneous Parts</b>	
14790031	Accessory Package (Power Cord, Grate Scraper, Lower Trim, Thermostat Wire, Wall Thermostat, Bottle Brush, Manual and Warranty)
11950068	Bracket, Hopper Lid Support
12050004 (*38)	Brush, Cleaning
12021101	Bushing Nylatron 1/2"
61050016 (*42)	Gasket, Quick Disconnect
61050005 (*40)	Gasket, Exhaust Blower, Fan Mount, 5 per pkg.
61050041	Gasket, Exhaust Blower, Tear Down, 5 per pkg.
61057203 (*41)	Gasket, Room Air Blower, 5 per pkg.
12051409	Knob, Control Panel Door (w/studs) 6 per pkg.
11720004	Knob, Damper
72023013	Nut, Hex (for Nylatron Bushing)
70K99	Paint, Metallic Black (12 oz Spray # 6309)
17100034	Plate, Ash Clean-Out, Left
17100035	Plate, Ash Clean-Out, Right
12050093 (*46)	Quick Disconnect 3" Vent Side
14M81	Quick Disconnect 4" (QDPC - 4)
14750014	Scraper Rod Kit, Replacement (Fits - Profile Series, Freestanding & Insert)
72051006	Stud, Plated (for Surround) 20 per pkg.
12055500 (*45)	Tool, Grate Scraper
<b>Firebox Parts</b>	
11750011 (*30)	Clips, Brick
14750015 (*32)	Firebrick Set
H0245	Log Set
12051263 (*33)	UltraGrate, Replacement

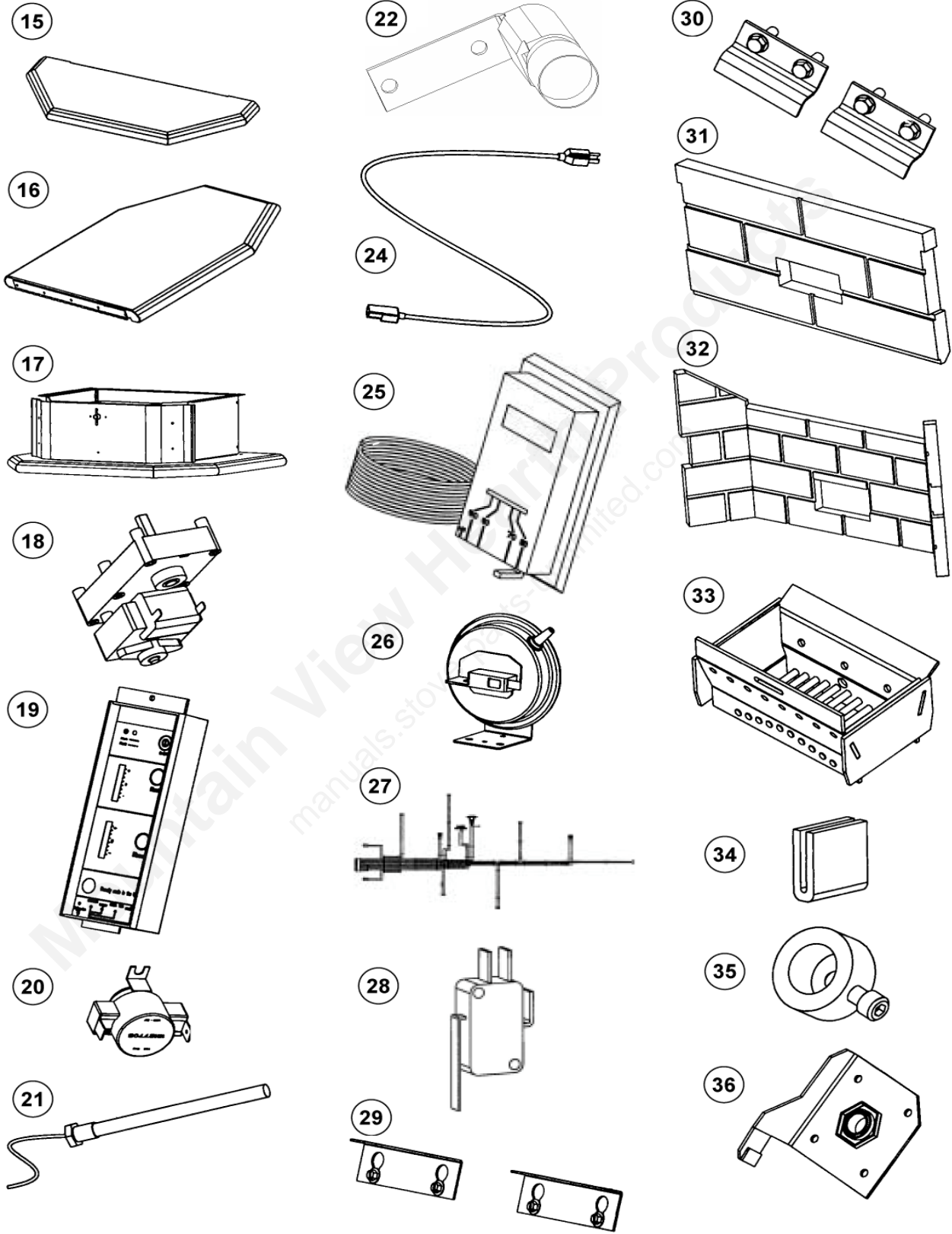
\* SN - Stove serial number range, parts are compatible with:

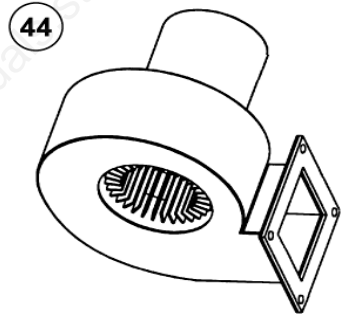
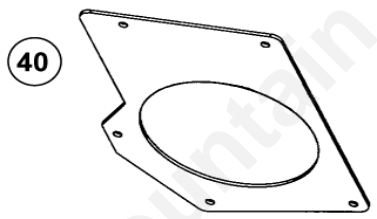
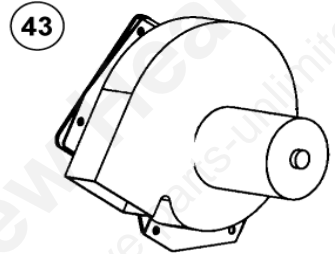
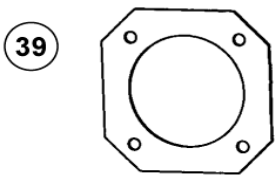
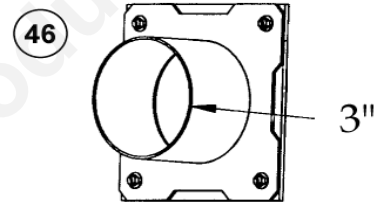
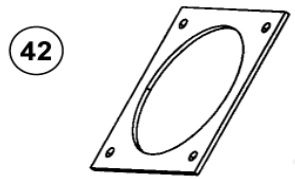
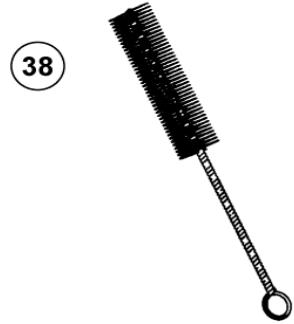
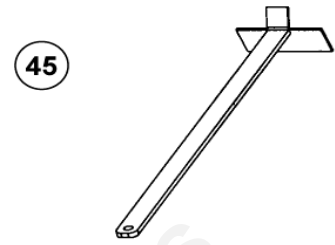
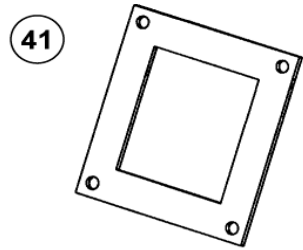
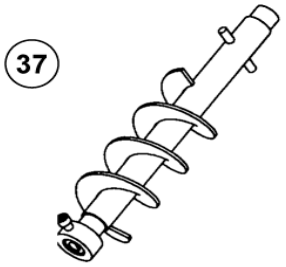
">" = greater than # indicated, "<" = less than # indicated, "-" = numbers within range.

- ◆ Includes gasket.

See Component Diagrams on pages P37-P39







## LENNOX HEARTH PRODUCTS

### Service Replacement Parts List

### QUEST FS

Pellet, Freestanding, WP4  
MODEL YEARS: 1994 - 2000

ITEM NO	DESCRIPTION
<b>Door Parts</b>	
13640075	Clip Kit, Glass Bottom
13640087	Bracket, Window Wash
13640075	Clip Kit, Glass Bottom
13640086	Clip Kit, Glass Side
13640085	Clip Kit, Glass Top
13650231	Door Assembly, Black (*SN 1001 - 12139) Painted
13750800	Door Assembly, Black (*SN 12140 - 29935) F/S Only
13650232	Door Assembly, Brown (*SN 1001 - 12139) Painted
13750801	Door Assembly, Brown (*SN 12140 - 29935) F/S Only
13750803	Door Assembly, Green (*SN 12140 - 29935) F/S Only
13650234	Door Assembly, Slate (*SN 1001 - 12139) Painted
13750802	Door Assembly, Slate (*SN 12140 - 29935) F/S Only
61057100	Gasket Kit, Door (1/2" diameter, firm, 7')
H0257	Glass, Center (Includes gasket)
H0258	Glass, Side (Includes gasket)
13644201	Handle Assembly, Door - Black
13644202	Handle Assembly, Door - Brown
13644204	Handle Assembly, Door - Slate
13644205	Handle Assembly, Green Door
12054200	Handle, Wood Door (Pkg. of 2)
12050506	Hinge Pin (2 per Pkg.) (52L16)
72045000	Shoulder Bolt (Door latch hardware)
72045001	Shoulder Bolt w/ Roller
<b>Body Components</b>	
13650046	Baffle, Heat Exchange
13740005	Bracket, Hopper Lid Support
13751154	Lid, Hopper - Black, Painted
13752154	Lid, Hopper - Brown, Painted
13754154	Lid, Hopper - Slate, Painted
13751054	Lid, Hopper, Black, Powder Coated
13752054	Lid, Hopper, Brown, Powder Coated
13755054	Lid, Hopper, Green, Powder Coated
13754054	Lid, Hopper, Slate, Powder Coated
13641232	Louvers (Gold - option)
13751231	Panel, Left Side - Black, Painted
13752231	Panel, Left Side - Brown, Painted
13754231	Panel, Left Side - Slate, Painted
13751048	Panel, Left Side, Black, Powder Coated
13752048	Panel, Left Side, Brown, Powder Coated

13755048	Panel, Left Side, Green, Powder Coated
13754048	Panel, Left Side, Slate, Powder Coated
13751156	Panel, Rear, Black, Painted
13752156	Panel, Rear, Brown, Painted
13754154	Panel, Rear, Slate, Painted
13751147	Panel, Right Side - Black, Painted
13752047	Panel, Right Side - Brown, Painted
13754147	Panel, Right Side - Slate, Painted
13755047	Panel, Right Side, Green, Powder Coated
13754047	Panel, Right Side, Slate, Powder Coated
13755100	Pedestal - Black, Painted
13755200	Pedestal - Brown, Painted
13755400	Pedestal - Slate, Painted
13755111	Pedestal, Black, Powder Coated
13755211	Pedestal, Brown, Powder Coated
13755511	Pedestal, Green, Powder Coated
13755411	Pedestal, Slate, Powder Coated
<b>Electrical Parts</b>	
13746010	Blower, Exhaust w/ Housing (FS)
13646109	Blower, Room Air
13645900	Control Board
13057801	Disc, High Limit (250 deg., 36T) 4 per pkg.
12057601	Disc, Low Limit (Ceramic, F140-30F) 3 per pkg.
61057210	Gasket, Exhaust Blower Mounting (5 per pkg.)
61057203	Gasket, Room Air Blower Mounting (5 per pkg.)
12046300	Motor, Auger
12058820	Power Cord (52L17)
13640014	Pressure Switch (Hose, PN 13656003, not included)
13656003	Hose, Pressure Switch, 19" (may need to be cut to size) - 3 per pkg.
13648000	Wire Harness
<b>Auger System Components</b>	
13652100	Auger Shaft Kit
12041300	Collar, Auger (Includes Set Screw)
61050003	Gasket, Auger Retention Plate (5 per pkg.)
13650072	Plate, Auger End (w/ Nylatron Bushing)
<b>Miscellaneous Parts</b>	
13740003	Cable, Damper (Freestanding)
72043008	Clamp, Cable
13640002	Knob, Auger Control (2 per pkg.)
12051409	Knob, Control Door
12055500	Tool, Grate Scraper
<b>Firebox Parts</b>	
13650018	Ash Pan
13650046	Baffle, Heat Exchanger
13640028	Clip, Brick (2 per pkg.)
13646500	Firebrick
13650015	Rod, Heat Exchange Scraper
12051263	UltraGrate, Replacement

\* SN - Stove serial number range, parts are compatible with:

">" = greater than # indicated, "<" = less than # indicated, "-" = numbers within range.

## LENNOX HEARTH PRODUCTS

### Service Replacement Parts List

### QUEST INS

Pellet, Insert, WP4

MODEL YEARS: 1994 - 2000

ITEM NO	DESCRIPTION
<b>Door Parts</b>	
13640087	Bracket, Window Wash
13640075	Clip Kit, Glass Bottom
13640086	Clip Kit, Glass Side
13640085	Clip Kit, Glass Top
13650231	Door Assembly, Black (*SN 1001 - 12139)
13850804	Door Assembly, Black (*SN 12140-29935)
13650232	Door Assembly, Brown (*SN 1001 - 12139)
13850805	Door Assembly, Brown (*SN 12140-29935)
13850807	Door Assembly, Green (*SN 12140-29935)
13650234	Door Assembly, Slate (*SN 1001 - 12139)
13850806	Door Assembly, Slate (*SN 12140-29935)
61057100	Gasket Kit, Door (6' of 1/2" rope)
H0257	Glass, Center (12050020)
H0258	Glass, Side (12050021)
13644201	Handle Assembly, Door - Black
13644202	Handle Assembly, Door - Brown
13644205	Handle Assembly, Door - Green
13644204	Handle Assembly, Door - Slate
12054200	Handle, Wood Door
12050506	Hinge Pin (2 per pkg.)
13624501	Latch, Door
72045000	Shoulder Bolt (Door latch hardware)
72045001	Shoulder Bolt w/ Roller
<b>Body Components</b>	
13740005	Bracket, Hopper Lid Support
13850001	Lid, Hopper - Black
13851078	Lid, Hopper - Black, Powder Coated
13850002	Lid, Hopper - Brown
13852078	Lid, Hopper - Brown, Powder Coated
13855078	Lid, Hopper - Green, Powder Coated
13850003	Lid, Hopper - Slate
13854078	Lid, Hopper - Slate, Powder Coated
13641232	Louvers (Gold - option)
13858100	Surround, Large, Black
13858110	Surround, Large, Black, Powder Coated
13858200	Surround, Large, Brown
13858210	Surround, Large, Brown, Powder Coated
13858510	Surround, Large, Green, Powder Coated
13858400	Surround, Large, Slate

13858410	Surround, Large, Slate, Powder Coated
13856100	Surround, Small, Black
13856110	Surround, Small, Black, Powder Coated
13856200	Surround, Small, Brown
13856210	Surround, Small, Brown, Powder Coated
13856510	Surround, Small, Green, Powder Coated
13856400	Surround, Small, Slate
<b>Electrical Parts</b>	
12046300	Auger Motor
13846010	Blower, Exhaust (w/ Housing) - Insert
13646109	Blower, Room Air
13645900	Control Board
13057801	Disc, High Limit (250 Deg.), 4 per pkg.
12057601	Disc, Low Limit (Ceramic, F140-30F), 3 per pkg.
12058820	Power Cord
13640014	Pressure Switch (see PN 13656003 for hose, not included)
13648000	Wire Harness
<b>Auger System Components</b>	
13652100	Auger Shaft Kit
12041300	Collar, Auger (Includes Set Screw)
61050003	Gasket, Auger Retention Plate - 5 per pkg.
13650072	Plate, Auger End (w/ Nylatron Bushing)
<b>Miscellaneous Parts</b>	
13840003	Cable, Damper - Insert
72043008	Clamp, Cable
61057210	Gasket, Exhaust Blower Mounting, 5 per pkg.
61057203	Gasket, Room Air Blower Mounting - 5 per pkg.
13656003	Hose, Pressure Switch, 19" (may need to be cut to size) - 3 per pkg.
12051409	Knob, Control Door
13640002	Knob, Control, Auger - 2 per pkg.
12055500	Tool, Grate Scraper
<b>Firebox Parts</b>	
13650018	Ash Pan
13650046	Baffle, Heat Exchanger
13640028	Clip, Brick - 2 per pkg
13646500	Firebrick
13650015	Rod, Heat Exchange Scraper
12051263	UltraGrate

\* SN - Stove serial number range, parts are compatible with:

">" = greater than # indicated, "<" = less than # indicated, "-" = numbers within range.

## LENNOX HEARTH PRODUCTS

### Service Replacement Parts List

### QUEST PLUS FS

Pellet, Freestanding, WP4  
MODEL YEARS: 1998 - 2000

ITEM NO	DESCRIPTION
<b>Door Parts</b>	
13640075	Clip Kit, Glass Bottom
13640086	Clip Kit, Glass Side
13640085	Clip Kit, Glass Top
17251083	Door Assembly, Black, Painted
17253083	Door Assembly, Brown, Painted
17255083	Door Assembly, Green, Painted
17254083	Door Assembly, Slate, Painted
17250093	Door Hinge Bracket
61057100	Gasket Kit, Door (1/2" diameter, firm, 7')
61057202	Gasket, Glass, 10' (5/8" x 1/16" flat)
H0257	Glass, Center (Includes gasket)
H0258	Glass, Side (Includes gasket)
17250095	Handle Assembly, Door - Black
72045000	Hardware, Door Latch
12050506	Hinge Pins, Gold (2 per pkg.) 52L16
<b>Body Components</b>	
17351154	Lid, Hopper, Black
17353154	Lid, Hopper, Brown
17355154	Lid, Hopper, Green, Powder Coated
17354154	Lid, Hopper, Slate
17351148	Panel, Left Side, Black, Powder Coated
17353148	Panel, Left Side, Brown, Powder Coated
17355148	Panel, Left Side, Green, Powder Coated
17354148	Panel, Left Side, Slate, Powder Coated
17350156	Panel, Rear, Black
17351147	Panel, Right Side, Black, Powder Coated
17353147	Panel, Right Side, Brown, Powder Coated
17355147	Panel, Right Side, Green, Powder Coated
17354147	Panel, Right Side, Slate, Powder Coated
17355100PT	Pedestal w/ Ash Pan, Black, Painted
17355100	Pedestal w/ Ash Pan, Black, Powder Coated
12041300	Collar, Auger (w/setscrew)
<b>Electrical Parts</b>	
12050011	Blower, Exhaust
12146109	Blower, Room Air
17255912	Control Board
12147705	Disc, High Limit (L250-30F, Bakolite, 60T21) 3 per pkg.
12057601	Disc, Low Limit (Ceramic, F140-30F) 3 per pkg.
12140213	Igniter, Cartridge Replacement
12040003	Igniter Kit, 6 pack
12058820	Power Cord (52L17)
12145903	Pressure Switch
12058811	Wiring Harness

<b>Miscellaneous Parts</b>	
13640028	Clip Set, Firebrick (2 ea.)
17250029	Firebrick Kit
61050016	Gasket, Quick Disconnect (5 per pkg.)
61050003	Gasket, Auger Retention Plate (5 per pkg.)
61050005	Gasket, Exhaust Blower, 5 per pkg.
61057203	Gasket, Room Air Blower (5 per pkg.)
13656003	Hose, Pressure Switch, 19" (may need to be cut to size) - 3 per pkg.
12050093	Quick Disconnect 3" Vent Side
11751305	Rod, Damper
17150009	Rod, Scraper
<b>Firebox Parts</b>	
13650046	Baffle, Heat Exchange
17250241	Log Set
16050246	Ultragate

## LENNOX HEARTH PRODUCTS

### Service Replacement Parts List

### QUEST PLUS INS

Pellet, Insert, WP4  
MODEL YEARS: 1998 - 1999

ITEM NO	DESCRIPTION
<b>Door Parts</b>	
18140046	Bracket, Door Latch
13640075	Clip Kit, Glass Bottom
13640086	Clip Kit, Glass Side
13640085	Clip Kit, Glass Top
17251083	Door Assembly, Black, Painted
17253083	Door Assembly, Brown, Painted
17255083	Door Assembly, Green, Painted
17254083	Door Assembly, Slate, Painted
13644201	Door Handle Assembly, Black
17250093	Door Hinge Bracket
61057100	Gasket Kit, Door (1/2" diameter, firm, 7')
61057202	Gasket Kit, Glass (Flat 5/8" x 1/16", 10')
H0257	Glass, Center (Includes gasket)
H0258	Glass, Side (Includes gasket)
72045000	Hardware, Door Latch (Shoulder Bolt)
12050506	Hinge Pins, Gold (2 per pkg.) 52L16
<b>Body Components</b>	
17450004	Ash Pan
13851078	Lid, Hopper, Black
13852078	Lid, Hopper, Brown
13855078	Lid, Hopper, Green
13854078	Lid, Hopper, Slate
17451187	Panel, Left Side, Black, Powder Coated
17453187	Panel, Left Side, Brown, Powder Coated
17455187	Panel, Left Side, Green, Powder Coated
17454187	Panel, Left Side, Slate, Powder Coated
17451192	Panel, Lower, Black, Powder Coated
17453192	Panel, Lower, Brown, Powder Coated
17455192	Panel, Lower, Green, Powder Coated
17454192	Panel, Lower, Slate, Powder Coated
17451188	Panel, Right Side, Black, Powder Coated
17453188	Panel, Right Side, Brown, Powder Coated
17455188	Panel, Right Side, Green, Powder Coated
17454188	Panel, Right Side, Slate, Powder Coated
17458100	Surround, Large, Black, Powder Coated
17458300	Surround, Large, Brown, Powder Coated
17458500	Surround, Large, Green, Powder Coated
17458400	Surround, Large, Slate, Powder Coated
17456100	Surround, Small, Black, Powder Coated

17456300	Surround, Small, Brown, Powder Coated
17456500	Surround, Small, Green, Powder Coated
17456400	Surround, Small, Slate, Powder Coated
<b>Electrical Parts</b>	
12050011	Blower, Exhaust
12146109	Blower, Room Air
17255912	Control Board
12140213	Igniter, Cartridge Replacement
12040003	Igniter Kit, 6 pack
12058820	Power Cord, Molded End, 8'
16050001	Pressure Switch (Hose, 13656003, not included)
<b>Auger System Components</b>	
17250241	Plate, Auger End
12046300	Auger Motor
11756300	Auger Shaft Kit
12041300	Collar, Auger (w/ Set Screw)
61050003	Gasket, Auger Retention Plate (5 per pkg.)
<b>Miscellaneous Parts</b>	
17450132	Exhaust Tee
61050005	Gasket, Exhaust Blower
61057210	Gasket, Mounting, Room Air Blower (5 per pkg.) 1/8" Lytherm
13656003	Hose, Pressure Switch (19") 3 per pkg.
13656003	Hose, Pressure Switch, 19" (may need to be cut to size) - 3 per pkg.
<b>Firebox Parts</b>	
13650046	Baffle, Heat Exchange
13640028	Clip Set, Firebrick - 2 per pkg
17250029	Firebrick Kit
16050246	UltraGrate

## LENNOX HEARTH PRODUCTS

### Service Replacement Parts List

### Renaissance

Pellet, Freestanding, WW1  
MODEL YEAR: 1990 - 1994 (Serial #1001 & Up)

ITEM NO	DESCRIPTION
<b>Doors Parts</b>	
14004300	Deflector, Window Wash
61057101	Gasket Kit, Door , WP3/WW1 (3/8", medium rope)
14055015	Glass Kit, Replacement (9" x 14-3/4") - WW1
14024200	Handle, Door, Oak, WW1
<b>Electrical Parts</b>	
13046109	Blower, Hall Effect Room Air and Exhaust (use with SSAC control board; *SN 3608 & up). Functions as Neg. Press Comb. Air (push) into firebox and Room Air Blower
13057801	Disc, High Limit (250 Deg.) - 4 per pkg.
Obsolete	Knob, Control Board Heat Output - 2 per pkg.
13050002	Microswitch, WW1/WP3
12046300	Motor, Auger (Drives pellet feed auger)
13025903	Pressure Switch Kit (FS6569-1018; B.P. @ +.10 in. W.C.; blue label)
13656003	Hose, Pressure Switch, 19" (may need to be cut to size) - 3 per pkg.
13045909	Relay, Latch-out (*SN 1001 - 3607)
13020003	Spring, Microswitch Actuation Spring, WW1/WP3 (conical)
16050205	Thermostat, Wall, Honeywell (Wire, 16020204, not included)
16020204	Wire, Thermostat, 20' coil - 18 gage
12055907	Fuse, 2.5 Amp (Ser. #1001-3607)
12055908	Fuse, 6 Amp (Ser. #3608-Up)
<b>Auger System Components</b>	
13052100	Auger Shaft Kit
61050003	Gasket, Auger End Plate (Neoprene) - 5 per pkg.
13052000	Plate, Auger End - WW1/WP3
<b>Miscellaneous Parts</b>	
14055000	Duct Kit, Exhaust
61020002	Gasket, Exhaust Connector
61020001	Gasket, Exhaust Duct Plug (round, lytherm)
14000906	Scraper Rod, 1/4", Tube (bent) **
14020906	Scraper Rod, 3/16", Tube (bent) **
13540001	"U"-tube Removal Kit, Secondary Air
12045901	Control Cable

**Firebox Parts**

13053200	Burnpot Note: The Burnpot holds the Burn Grate, which is where the fire takes place.
13053100	Burnpot/Grate Kit, WW1/WP3 Note: The Burnpot holds the Burn Grate, which is where the fire takes place.
13046500	Firebrick Kit (firebrick, clips and fasteners)
61057207	Gasket, Burnpot/Secondary Air Tube "O"-ring (WW1/WP3) - 12 per pkg.
13053500	Grate, WW1/WP3-I

\* SN - Stove serial number range, parts are compatible with:

">" = greater than # indicated, "<" = less than # indicated, "-" = numbers within range.

\*\* Measure the diameter of the original scraper rod to determine which kit is needed.

Mountain View Hearth Products  
manuals.stove-parts-unlimited.com

## LENNOX HEARTH PRODUCTS

### Service Replacement Parts List

### T300P Series

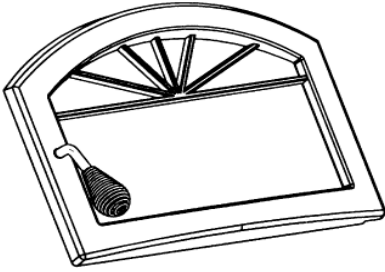
### Whitfield Feed System (T300P/T301P/T305P/T308P)

MODEL YEARS: 1999 - present

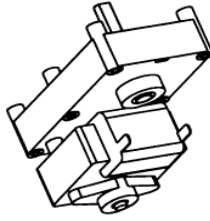
ITEM NO	DESCRIPTION
<b>Door Parts</b>	
28M19	Door Assembly, Black Enamel – Model T301P (20953012)
28M17	Door Assembly, Black Painted – Model T300P (20953002)
28M18	Door Assembly, Green Enamel – Model T305P (20953052)
28M20	Door Assembly, Sand Enamel – Model T308P (20953082)
26M81	Gasket Kit, Door, 3/4" Rope (10' of 11547)
61057208	Gasket Kit, Glass (4')
20959999	Glass, Door (includes gasket)
20950005	Handle Assembly, Door
28M18	Hinge Pin Set, Black, 39023
28M17	Hinge Pin Set, Gold, 39023G
<b>Body Components</b>	
20950091	Ashpan Assembly
20M49	Cast Top, Black Enamel - Model T301P (20953013)
20M44	Cast Top, Black Painted – Model T300P (20953003)
20M54	Cast Top, Green Enamel – Model T305P (20953053)
20M59	Cast Top, Sand Enamel – Model T308P (20953083)
20950205	Hopper Lid Assembly, Kit
20751075	Leveler, Legs (Set of 2), 51L75
20950100	Rear Panel Assembly
<b>Electrical Parts</b>	
12050011	Blower, Exhaust
12146109	Blower, Room Air (w/ Gasket & 4 nuts)
16055150	Control Board
12147705	Disc, High Limit (L250-30F, 60T21) Set of three
18150150	Fuse, Control Board, 5 amp, 250 volt, Fast blow, 12pk.
12055908	Fuse, Igniter, 6 amp, 125 volt, Fast blow, 12pk.
12140213	Igniter Probe, 400 W, 4.8 A
12046300	Motor, Auger
14750404	Photoeye Kit, Replacement (w/bracket) - (Serial #5493 and up (units with Serial # lower than #5493 order Kit P/N H0352 (relocates Photoeye to top of auger tube at hopper)
H0352	Photoeye relocation kit Serial # <5493 (relocates photoeye to top of auger tube)
12058820	Power Cord (52L17)
16050001	Pressure Switch
16050205	Thermostat, Wall, Honeywell (Thermostat Wire, P/N 16020204, is not included)
16020204	Wire, Thermostat, 20' coil - 18 gage
12050815	Wiring Harness

<b>Auger System Components</b>	
12051001	Bumper, Auger (Set of 5)
12041300	Collar & Screw Set, Auger (3 pc.)
20950087	End Flange, Auger
61050003	End Plate Gasket, Auger (5 pc.)
11756300	Shaft, Auger
<b>Miscellaneous Parts</b>	
12050004	Brush, Cleaning
17150029	Damper Rod Assembly, Kit
20950110	Gasket, Quick Disconnect, 3"
26021H	Paint, Touch Up, Green (for enamel) 1/2 oz. bottle
26022H	Paint, Touch Up, Black (for enamel) 1/2 oz. bottle
26023H	Paint, Touch Up, Sand (for enamel) 1/2 oz. bottle
14M81	Quick Disconnect Pipe Connector, 4" (Required if 4" Pipe is used)
12055500	Tool, Grate Scraper
20953006	Trivet, Black Painted
14M16	Trivet, Gold Plated
12051101	Bushing, Nylatron
12121413	Knob, Ashpan
12051409	Knob, Control Board Access (6 per pkg)
<b>Firebox Parts</b>	
20950014	Baffle, Heat Exchange
20950155	Brick Clips (2 clips)
20950150	Firebrick Set
H0252	Log Set (2 Piece)
12051263	UltraGrate, Replacement

1



5



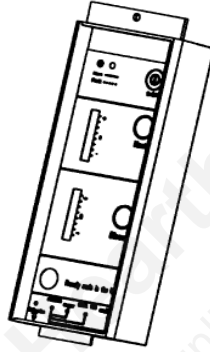
9



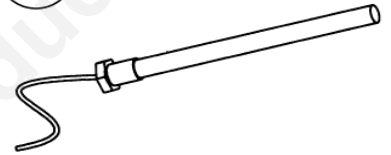
2



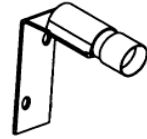
6



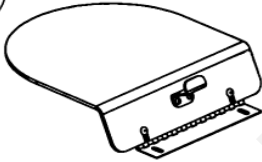
10



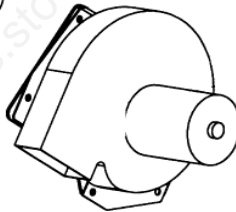
11



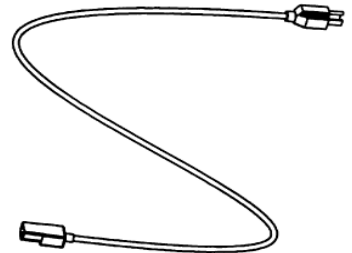
3



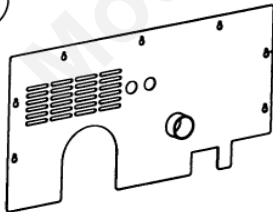
7



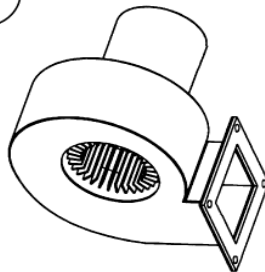
12



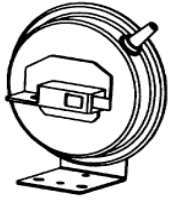
4



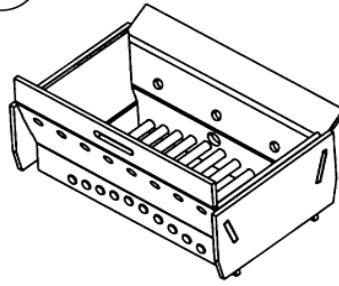
8



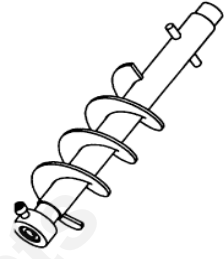
13



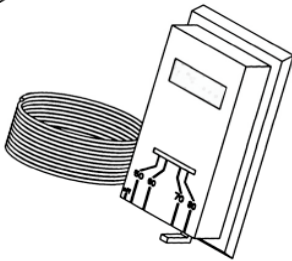
18



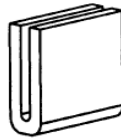
23



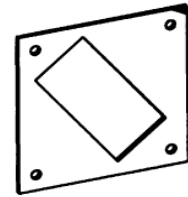
14



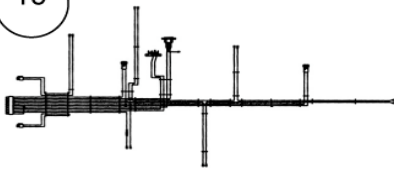
19



24



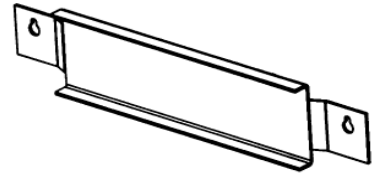
15



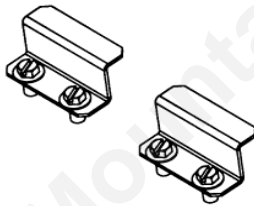
20



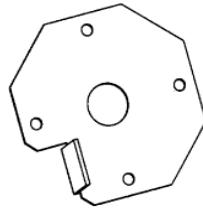
25



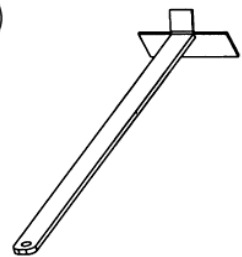
16



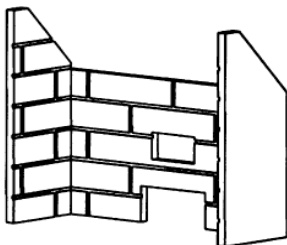
21



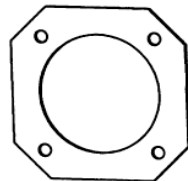
27



17



22



## LENNOX HEARTH PRODUCTS

### Service Replacement Parts List

### TP300 Series

#### Earth Stove Feed System (TP300/TP301/TP305/TP308)

MODEL YEARS: 1998 - 2000

ITEM NO	DESCRIPTION
<b>Door Parts</b>	
27M64	Clip Set, Glass
28M19	Door Assembly, Ebony Black (Enamel) - 370501
28M18	Door Assembly, Hunter Green (Enamel) - 370505
28M17	Door Assembly, Metallic Black (Paint) - 370500
28M20	Door Assembly, Mojave Sand (Enamel) - 370508
27M80H	Gasket Kit, Ash Drawer (3/8" x 1/8" Flat x 16' of 01098)
26M81	Gasket Kit, Door, 3/4" Rope (10' of 11547)
27M81	Gasket Kit, Glass (10' of 10580)
T30-G	Glass, Arched, Door, 17 x 10 1/4" (Gasket not included)
37110	Handle Assembly
26M18	Hinge Pin Set, Door, Black (2 ea. 39023, 2 ea. 39024, and 2 ea. 39025)
26M17	Hinge Pin Set, Gold, 39023G
37038	Torque Plate (Latch)
<b>Electrical Parts</b>	
38122	Blower, Exhaust (EBM 90 CFM) (Gasket not included)
38125H	Blower, Room Air (EBM 160 CFM, Includes Gasket 38127) 38125
38123	Capacitor, Exhaust Blower (Round)
38126	Capacitor, Room Air Blower (Oval)
38515H	Control Board
38165	Disc, Fan - 3 Prong (F155°-20F)
18253	Disc, High Limit Auto Reset (L250°-40F)
34121H	Disc, High Limit Manual Reset (L250°-40F) 34121
11565	Disc, Low Limit (Safety Disc, F110°- 20F)
38092	Gasket, Exhaust Blower
38127	Gasket, Room Air Blower
527	Knob, Rheostat
15070	Motor, Auger, M-K w/ Coupler (6 RPM, .80 Amps)
15060	Motor, Cup, M-K w/ Coupler (1.2 RPM, .41 Amps)
38124	Power Cord w/ Wire Harness
38148	Pressure Switch, Low
528	Rheostat, Blower Speed Control (Knob, 10050087, Not Included) - 02082
16050205	Thermostat, Wall, Honeywell (Thermostat Wire, P/N 16020204, is not included) CTR140
<b>Hopper Parts</b>	
38146	Gasket, Hopper/Burner (Between bottom hopper flange and metering cup flange)

<b>Feed System Component Parts</b>	
38130	Auger Assembly, 10 1/2"
15035	Bearing, Pillowblock (For Auger)
38054	Blades, Metering Cup (Order 2 if set is needed)
18491	Bushing, Bronze (For Metering Cup) (Order 2 if set is needed)
15041	Couplers, 1/2" Lovejoy (Order 4 if set is needed)
38053	Cup, Metering
15031	Gear, Spyder (Aluminum)
15078	Propeller (Cup/Auger Motor Fan Blades)
<b>Miscellaneous Parts</b>	
27M81	Gasket, Ash Drawer
38108	Gasket, Cleanout Cover
38096	Gasket, Stack (For Flue Outlet Assy)
38099	Igniter Kit, Autostart
26023H	Paint, 1/2 oz. Mojave Sand Touch Up - 26023H
70K99	Paint, Black Metallic (Cast Stove Body) (12 oz. Spray #6309) 76-141MB
38087	Stack Collar, 3"
20953006	Trivet, Cast Iron 11 1/2 x 6 1/4" (T300-6)
14M16	Trivet, Gold Plated 11 1/2 x 6 1/4" (T310G)
<b>Logs &amp; Firebox Parts</b>	
38800	Brick Panel Set, Fiber
38050	Firepot, Pellet
38068	Gasket, Burner Tube 1/8 x 1/2" Graphite (Requires 2')
38157H	Gasket, Firepot (Lytherm) - 38157
38101	Log Assembly
38728	Plate, Baffle

## LENNOX HEARTH PRODUCTS

### Service Replacement Parts List

### TP40 / TP40N

Pellet, Freestanding

MODEL YEARS: 1989 - 1992

ITEM NO	DESCRIPTION
<b>Door Parts</b>	
28M09	Gasket, 1/2" Door (Door and Glass Rope) 10' of 15042. For Door seal problems order 5/8" gasket, P/N 15164 (order 6 feet)
T100G-1	Glass, 8" x 13" Arched Ceram (Gasket not included)
T1-85-100	Handle Assembly, Door
T85-11	Spring, Door Handle Coil
<b>Electrical Parts</b>	
15001-1	Blower, Exhaust (7002-1668, 60 CFM, .65 Amps, *SN > 3666) ⓘ
H0221	Blower, Room Air, Left, 15007, Note: This blower is used on left side for models HP40 & TP40/340/440. This blower is used on the Right side on models MP40, MP240, MP250 & WP50. This blower is used in the center on model FP60.
15059	Bracket, Disc Mounting (On Room Air Blower)
28M61	Control Board, Upgrade Controller 2000 - Replaces Control Board models 15015 / OII500, 15016 / OII500S, 15022 / 1000 and 15023 / Emerson (which has no model designation on the face plate)
15057	Disc, Fan (w/ 3 Prongs, F140°-20F, 60T13)
15011	Disc, High Limit (Manual Reset, L200-40F, 60T14)
11565	Disc, Low Limit (Safety Disc, F110-20F, 60T12)
10050087	Knob, Rheostat (02107)
15070	Motor, Auger, M-K w/ Coupler (6 RPM, .80 Amps)
15060	Motor, Cup, M-K w/ Coupler (1.2 RPM, .41 Amps)
15016-1	Pigtail Kit, Control Board (1989 models using Control Board w/start Button require this kit. Controller 2000, p/n 28M61, includes this kit)
26M22	Power Cord, 8 ft. (02071)
528	Rheostat, Blower Speed Control (Knob, 10050087, Not Included) - 02082
16050205	Thermostat, Wall, Honeywell (Thermostat Wire, P/N 16020204, is not included) CTR140
16020204	Wire, Thermostat, 20' coil - 18 gage
<b>Hopper Parts</b>	
H0221	Blower, Room Air (15007) Does not include disc-15011 or standoff-15059
15089	Gasket Kit, Hopper Lid (order 6 feet)
15162	Gasket, Hopper/Burner (between bottom hopper flange and metering cup flange)
1105	Knob, Brass Hopper (01105)
15201	Lid Assembly, Hopper
15016-1	Pigtail Kit (Upgrades 1989 model stoves not wired for use with a control board which has a start button require this kit)

<b>Miscellaneous Parts</b>	
15020	Auger Assembly, 15"
15035	Bearing, Pillow Block (for metering cup and auger)
BRN133	Blade, Cup (Order 2 if set is needed)
18201	Cerawool Pad (For Top Marble)
TP46	Collar, Donut Stack (Spacer Between Marble and Stack)
TP45	Collar, Stack (28M07, Gasket not included)
15169C	Corn Pot Kit
15041	Coupler, 1/2" Lovejoy
15039	Coupler, 3/8" Lovejoy - Aluminum (used w/ Durham Motors Only)
14M66	Duct, Floor, Round, 3" (78-35)
28M09	Gasket, Stove Top (10' of 1/2" rope). For Seal problems order 5/8" gasket, P/N 15164 (order 10 feet)
28M07	Gasket, 1/4" Rope (for Hearth Marble and Stack Assembly) - 4' of 15779. Cut to size
15163	Gasket, Room Blower (For Flange)
15031	Gear, Spyder (Aluminum)
26M25	Leg Kit (4 ea. of T152)
14M34	Marble Set, Gray (MS102)
14M35	Marble Set, Green (MS105)
15045	Metering Cup (w/ Blades)
70K99	Paint, Black Metallic, 12 oz. Spray #6309 (76-141MB)
15050-5	Plug, 1/8" (spacer for metering cup when burning corn)
BRN120	Propeller, Cup/Auger (Black - Durham Motors Only)
T130H	Trivet, Cast Iron T130
<b>Logs &amp; Firebox Parts</b>	
15253	Baffle, Upper
15169C	Corn Pot Kit
15149	Firepot, Pellet
15152-7	Flame Spreader (Screws On)
PL300	Log Set, Oak 4 pc. (Early Revision Logs, Fits all Firepots)
PL500	Log Set, Split 4 pc. (Fits Firepots w/o removable log racks only)

\* SN - Stove serial number range, parts are compatible with:

">" = greater than # indicated, "<" = less than # indicated, "-" = numbers within range.

① 15001, 30CFM Exhaust Blowers are no longer available. 15001-1 can be substituted but will require driving in self tapping screws (or drilling) to mount. The 30 CFM exhaust blower is available through Grainger (stock #4C760). The original air sutter will need to be removed from original part and installed on new part.

## LENNOX HEARTH PRODUCTS

### Service Replacement Parts List

### TP340 / 440

#### MODEL YEARS: 1994 - 2000

ITEM NO	DESCRIPTION
<b>Door Parts</b>	
C15220	Door Assembly Rev. C (Includes Handle *SN>10000)
15220	Door Assembly Rev. T (Includes Handle *SN<10000)
27M83	Gasket Kit, 1/2" Medium Rope (6' of 18074). For Door seal problems order 5/8" gasket, P/N 15164 (order 6 feet)
27M81	Gasket Kit, Door Glass (10' of 10580)
26M23	Gasket, Side Window 1/8" Lytherm
18242	Glass, Door 9 1/2 x 14 1/2" (Fits Rev. T *SN<10000, Gasket not included)
18280	Glass, Door 9 5/8 x 14 1/4" (Fits Rev. C *SN>10000, Gasket not included)
18256	Glass, Side 3 x 9 3/4" (Fits Rev. T *SN<10000, Gasket not included)
18281	Glass, Side 3 x 9 5/8" (Fits Rev. C *SN>10000, Gasket not included)
26M80	Handle Assembly (10400)
T151	Hinge Pin, Threaded 1/4-20 (*SN<8950 & *SN>10000) ①
T153	Hinge Pin, Threaded 5/16-18 (~*SN 8951 - 10000)
<b>Electrical Parts</b>	
15001-1	Blower, Exhaust (7002-1668) 60 CFM; .65 Amps (*SN>3666)
H0221	Blower, Room Air, Left, 15007, Note: This blower is used on left side for models HP40 & TP40/340/440. This blower is used on the Right side on models MP40, MP240, MP250 & WP50. This blower is used in the center on model FP60.
15059	Bracket, Disc Mounting (On Room Air Blower)
28M61	Control Board, Upgrade Controller 2000 - Replaces Control Board models 15015 / OII500, 15016 / OII500S, 15022 / 1000 and 15023 / Emerson (which has no model designation on the face plate)
15057	Disc, Fan (Blower Override, 3 Prong, F140°-20F, 60T13)
15011	Disc, High Limit (Manual Reset, L200°-40F, 60T14 )
11565	Disc, Low Limit (Safety disc, F110°-20F, 60T12)
10050087	Knob, Rheostat (02107)
15070	Motor, Auger, M-K w/ Coupler (6 RPM, .80 Amps)
15060	Motor, Cup, M-K w/ Coupler (1.2 RPM, .41 Amps)
26M22	Power Cord, 8 ft. (02071)
528	Rheostat, Blower Speed Control (Knob, 10050087, Not Included) - 02082
16050205	Thermostat, Wall, Honeywell (Thermostat Wire, P/N 16020204, is not included)
16020204	Wire, Thermostat, 20' coil - 18 gage
<b>Hopper Parts</b>	
15089K	Gasket Kit, Hopper Lid (order 6 feet)
15162	Gasket, Hopper/Burner (Between bottom hopper flange and metering cup flange)
15201	Hopper Lid Assembly
1105	Knob, Brass Hopper (01105)

<b>Miscellaneous Parts</b>	
15020	Auger Assembly 15"
15035	Bearing, Pillow Block (for metering cup and auger)
BRN133	Blade, Cup (Order 2 if set is needed)
TP46	Collar, Donut Stack, Spacer Between Marble and Stack
TP45	Collar, Stack (Gasket Kit, 28M07, Not Included)
15041	Coupler, 1/2" Lovejoy
15045	Cup, Metering (Includes Blades)
14M66	Duct, Floor, Round, 3" (85-35)
28M09	Gasket, Stove Top (10' of 1/2" rope). For Seal problems order 5/8" gasket, P/N 15164 (order 10 feet)
28M07	Gasket, 1/4" Rope, Ash Lip Marble (4' of 15779. Cut into 4 pieces and place under marble)
18201	Gasket, Cerawool (Pad For Top Marble)
15163	Gasket, Room Fan (For Flange)
15031	Gear, Spyder (Each)
26M25	Leg Kit (4 ea. of T152)
14M34	Marble Set, Gray (Rear vent nits also require T130H Trivet) When marble is used
14M35	Marble Set, Green (Rear vent nits also require T130H Trivet) When marble is used
70K99	Paint, Black Metallic, 12 oz. Spray #6309 (76-141MB)
26M77	Top (2-Bolt), Stove (Rev. T)
T130H	Trivet, Black (T130)
<b>Logs &amp; Firebox Parts</b>	
15253	Baffle, Upper
15169C	Corn Pot
15149	Firepot, Pellet
15152-7	Flame Spreader (Replaces Welded One) (Screws On)
PL300	Log Set, Oak 4pc. 1993-95 (*SN < 9051)
PL500	Log Set, Split 4pc 1995-96 (*SN > 9051)

\* SN - Stove serial number range, parts are compatible with:

">" = greater than # indicated, "<" = less than # indicated, "-" = numbers within range.

① Units with serial number 10157 to 10246 will require tapping the hole to 1/4"-20 UNC.

## LENNOX HEARTH PRODUCTS

### Service Replacement Parts List

### FP60 Pellet Insert MODEL YEAR: 1991

ITEM NO	DESCRIPTION
<b>Door &amp; Door Parts</b>	
28M07	Gasket Kit, Door 1/4" (4' of 15779)
Not Available	Door Assembly, Glass (15750)
<b>Electrical Parts</b>	
Not Available	Blower, Exhaust (Order from Grainger, 4C443)
H0221	Blower, Room Air, 15007 (Gasket not included - P/N 15163) Note: This blower is used in the center on model FP60 (below door, behind panel). This blower is used on left side for models HP40 & TP40/340/440. This blower is used on the Right side on models MP40, MP240, MP250 & WP50.
28M61	Control Board, Upgrade, Controller 2000 - Replaces Control Board models 15015 / OII500, 15016 / OII500S, 15022 / 1000 and 15023 / Emerson (which has no model designation on the face plate)
15057	Disc, Fan (Room Fan-Override, 3 prong, 140-20F)
15011	Disc, High Limit (Burner & Blower, L200-40F, Manual Reset)
11565	Disc, Low Limit (Safety Disc, F110-20F)
10050087	Knob, Rheostat (02107)
15070	Motor, Auger, M-K w/ Coupler (6 RPM, .80 Amps)
15060	Motor, Cup, M-K w/ Coupler (1.2 RPM, .41 Amps)
26M22	Power Cord, 8 ft. (02071)
528	Rheostat, Blower Speed Control (Knob, 10050087, Not Included) - 02082
16050205	Thermostat, Wall (Wire, p/n 16020204, not included) CTR140
16020204	Wire, Thermostat, 20' Coil - 18 gage
<b>Hopper Parts</b>	
15089	Gasket Kit, Hopper Lid (order 6 feet)
15162	Gasket, Burner/Hopper (Between bottom hopper flange and metering cup flange)
<b>Miscellaneous Parts</b>	
15035	Bearing, Pillow Block (for metering cup and auger)
BRN133	Blade, Cup (Order 2 if set is needed)
15041	Coupler, 1/2" (Cup & Auger Shaft)
15039	Coupler, 3/8" (Cup & Auger Motor Shaft) Durham Motors Only
15163	Gasket, Room Air Blower
15031	Gear, Aluminum Spyder
15050-5	Plug, '1/8" (Spacer for metering cup when burning corn)
15050-4	Plug, '3/8" (Spacer for metering cup when burning corn)
15078	Propeller, Cup/Auger Motor (White - Merkle Korpff Motors Only)
BRN120	Propeller, Cup/Auger Motor (Black - Durham Motors Only)
Not Available	Wiper Blades (Substitute 2 ea. BRN133) 15050-2

## LENNOX HEARTH PRODUCTS

### Service Replacement Parts List

### HP40

MODEL YEARS: 1989 - 1994

ITEM NO	DESCRIPTION
<b>Door &amp; Door Parts</b>	
27M67	Clip Set, Glass
G4000	Door Assembly, Gold Glass (includes handle)
15101	Gasket (Interam), 7/32" x 9/16" x 18" (Cut to size, Requires 3 strips between glass and door)
86-128	Gasket Kit, 3/4" Door Rope (Includes Adhesive)
15099	Gasket, Lytherm, 1/8" x 1 1/2" x 12" (Cut to size, Requires 4 strips between glass and clips)
G2000-7	Glass, 9 1/2" x 15 3/4" (Arched Ceram Pane) - Gasket not included
10300	Handle Assembly, Door (Gold Door) (Handles for brass doors (1989) are no longer available)
85-11	Spring, Door Handle Coil
<b>Electrical Parts</b>	
15001-1	Blower, Exhaust (60 CFM) Above *SN 3462 (30 CFM exhaust blower P/N 15001 is no longer available, Order from Grainger 4C760) Ⓢ
H0221	Blower, Room Air, Left, 15007 (Blue blower Foam Pads, P/N 15679, Not Included) ✓ Note: This blower is used on left side for models HP40 & TP40/340/440. This blower is used on the Right side on models MP40, MP240, MP250 & WP50. This blower is used in the center on model FP60.
H0222	Blower, Room Air, Right, 15009 (Blue blower Foam Pads, P/N 15679, Not Included) ✓ Note: This blower is used on Right side for model HP40. This blower is used on the Left side on models MP40, MP240, MP250 & WP50.
28M61	Control Board, Upgrade Controller 2000 - Replaces Control Board models 15015 / OII500, 15016 / OII500S, 15022 / 1000 and 15023 / Emerson (which has no model designation on the face plate)
15057	Disc, Fan (Room Air Blower Override, 3 prong, 140-20F)
15012	Disc, High Limit (L200-40F, Auto) Burner
15011	Disc, High Limit (Manual Reset, L200-40F) Blower
11565	Disc, Low Limit (Safety Disc, F110-20F)
10050087	Knob, Rheostat (02107)
15070	Motor, Auger, M-K w/ Coupler (6 RPM, .80 Amps)
15060	Motor, Cup, M-K w/ Coupler (1.2 RPM, .41 Amps)
15016-1	Pigtail Kit, Control Board (1989 models using Control Board w/start Button require this kit. Controller 2000, p/n 28M61, includes this kit)
26M22	Power Cord, 8 ft.
528	Rheostat, Blower Speed Control (Knob, 10050087, Not Included) - 02082
16050205	Thermostat, Wall, Honeywell (Thermostat Wire, 16020204, not included)
16020204	Wire, Thermostat, 20' coil - 18 gage
<b>Surround &amp; Brass Trim</b>	
00010H	Darts (plastic clips which secure brass trim on side louvered panels) (00010) ☒
2047	Trim Set, Gold Tone (for 32"h, 42"w surround) (02047)
11817	Trim, Decorative Side Gold (blower Housing) Order 2 to match

<b>Hopper Parts</b>	
15089	Gasket Kit, Hopper Lid (order 6 feet)
15162	Gasket, Burner/Hopper (between bottom hopper flange and metering cup flange)
1105	Knob, Top Brass, Hopper (01105)
<b>Miscellaneous Parts</b>	
15010	Auger Assembly, 17"
15035	Bearing, Pillow Block (for metering cup and auger)
BRN133	Blade, Cup (Order 2 if set is needed)
Not Available	Blades, Wiper (Multi-Fueled 1990 Units Only. Substitute 2 ea. BRN133)
15041	Coupler, 1/2" (Cup & Auger Shaft)
15039	Coupler, 3/8" (Cup & Auger Motor Shaft) Durham Motors Only
15045	Cup, Metering (Includes Blades)
15163	Gasket, Room Air Blower
15031	Gear, Aluminum Spyder
70K99	Paint, Black Metallic, 12 oz. Spray #6309 (76-141MB)
15050-5	Plug, 1/8" (spacer for metering cup when burning corn)
BRN120	Propeller, Cup/Auger Motor (Black - Durham Motors Only)
<b>Firepot &amp; Firebox Parts</b>	
15169C	Corn Pot Assembly (Includes 1/8" & 3/8" plugs)
15149	Firepot (Pellet)
15152-7	Flame Spreader
38108	Gasket, Clean-Out Cover
PL300	Log Set, Refractory (units w/ Firepots mfg'd before 3/95)
PL500	Log Set, Split (units w/ Fireports mfg'd after 3/95)
15611	Plate, Baffle

- ① To use Grainger blower, air shutter from original blower will need to be transferred to new blower.
- ☒ This is an upgrade 24K gold trim. Requires ordering 2 to match
- ✓ 1989 unit with bent flange is no longer available. Flange can be bent in field by using a vise and bending it over
- \* SN - Stove serial number range, parts are compatible with:  
 ">" = greater than # indicated, "<" = less than # indicated, "-" = numbers within range.

**LENNOX HEARTH PRODUCTS****Service Replacement Parts List****HW040-BK / HW040-T: Homewarmer****MPD040T: Traeger**

Pellet, Freestanding

MODEL YEARS: 1987 - 1988

ITEM NO	DESCRIPTION
<b>Electrical Parts</b>	
15011	Disc, High Limit (L200-40F, Manual Reset)
11565	Disc, Safety (F110-20F)
Not Available	Fan Limit Control (11" Probe) Order From Grainger #2E820
Not Available	Fan Limit Control (5" Probe) Order From Grainger #2E818
15070	Motor, Auger, M-K w/ Coupler (6 RPM, .80 Amps)
15060	Motor, Cup, M-K w/ Coupler (1.2 RPM, .41 Amps)
26M22	Power Cord, 8 ft.
16050205	Thermostat, Wall (Wire, P/N 16020204, not included)
16020204	Wire, Thermostat (20' of 18 gage)
<b>Hopper Parts</b>	
1105	Knob, Brass Hopper (01105)
<b>Miscellaneous Parts</b>	
15035	Bearing, Pillow Block (for metering cup and auger)
BRN133	Blade, Cup (Order 2 if set is needed)
15041	Coupler, 1/2" Lovejoy (Cup & Auger Shaft), Merkle Korph Motors
15039	Coupler, 3/8" Lovejoy (Auger & Cup Motor Shaft), Durham Motors
Not Available	Coupler, 5/16" Lovejoy (Cup Motor Shaft) Durham Motors w/ square gear box
15031	Gear, Aluminum Spyder
BRN120	Propeller, Cup/Auger Motor (Black - Durham Motors)
15078	Propeller, Cup/Auger Motor (White - Merkle Korph)

**LENNOX HEARTH PRODUCTS****Service Replacement Parts List****HW070-BK / HW070-T: Homewarmer****MPW070 / MPD070: Traeger**

Pellet, Freestanding

MODEL YEARS: 1987 - 1988

ITEM NO	DESCRIPTION
<b>Electrical Parts</b>	
15011	Disc, High Limit (L200-40F, Manual Reset)
11565	Disc, Low Limit (Safety disc, F110-20F)
Not Available	Fan Limit Control (11" Probe) Order From Grainger #2E820
15070	Motor, Auger, M-K w/ Coupler (6 RPM, .80 Amps)
15060	Motor, Cup, M-K w/ Coupler (1.2 RPM, .41 Amps)
26M22	Power Cord, 8 ft.
16050205	Thermostat, Wall, Honeywell (Thermostat wire, P/N 16050205, is not included)
16020204	Wire, Wall Thermostat (20' of 18 gage)
<b>Hopper Parts</b>	
1105	Knob, Brass Hopper (01105)
<b>Miscellaneous Parts</b>	
15035	Bearing, Pillow Block (for metering cup and auger)
15041	Coupler, 1/2" Lovejoy (Cup & Auger Shaft)
15039	Coupler, 3/8" Lovejoy (Auger & Cup Motor Shaft) Durham Motors
Not Available	Coupler, 5/16" Lovejoy (Cup Motor Shaft) Early Rev. Motor w/ square gear box
15031	Gear, Aluminum Spyder
BRN120	Propeller, Cup/Auger Motor (Black - Durham Motors)
15078	Propeller, Cup/Auger Motor (White - Merkle Korph)

**LENNOX HEARTH PRODUCTS****Service Replacement Parts List****HWF040: Aristocrat (Homewarmer)****PCH040: Patriot (Traeger)**

Pellet, Freestanding

MODEL YEARS: 1987 - 1988

ITEM NO	DESCRIPTION
<b>Door &amp; Door Parts</b>	
1105	Knob, Brass (for Brass Grille Door Frame) 01105
<b>Electrical Parts</b>	
15011	Disc, High Limit (L200-40F, Manual Reset)
11565	Disc, Low Limit (Safety disc, F110-20F)
Not Available	Fan Limit Control (5" Probe) Order From Grainger #2E818
15070	Motor, Auger, M-K w/ Coupler (6 RPM, .80 Amps)
15060	Motor, Cup, M-K w/ Coupler (1.2 RPM, .41 Amps)
26M22	Power Cord, 8 ft.(02071)
16050205	Thermostat, Wall, Honeywell (Thermostat wire, P/N 16050204, not included)
16020204	Wire, Wall Thermostat (20' of 18 gage)
<b>Miscellaneous Parts</b>	
15035	Bearing, Pillow Block (for metering cup and auger)
BRN133	Blades, Cup (Order 2 if set is needed)
15041	Coupler, 1/2" Lovejoy (Cup & Auger Shaft) + Merkle Korph Motors
15039	Coupler, 3/8" Lovejoy (Auger & Cup Motor Shaft) Durham Motors
Not Available	Coupler, 5/16" Lovejoy (Cup Motor Shaft) Durham Motors w/ square gear box
86-128	Gasket Kit, 3/4" Door Rope (Includes Adhesive)
15031	Gear, Aluminum Spyder
BRN120	Propeller, Cup/Auger Motor (Black - Durham Motors)
15078	Propeller, Cup/Auger Motor (White - Merkle Korph)

## LENNOX HEARTH PRODUCTS

### Service Replacement Parts List

#### HWS040: Homewarmer

#### MPW040T: Traeger

Pellet, Freestanding

MODEL YEARS: 1987 - 1988

ITEM NO	DESCRIPTION
<b>Door &amp; Door Parts</b>	
G4000	Door Assembly, Gold Glass (includes handle)
15101	Gasket (Interam), 7/32" x 9/16" x 18" (Cut to size, Requires 3 strips between glass and door)
86-128	Gasket Kit, 3/4" Door Rope (Includes Adhesive)
15099	Gasket, Lytherm, 1/8" x 1 1/2" x 12" (Cut to size, Requires 4 strips between glass and clips)
G2000-7	Glass, Arched (Ceram Pane, 9 1/2" x 15 3/4") - Gasket not included
10300	Handle Assembly, Door (Gold doors only, not brass)
85-11	Spring, Door Handle Coil
<b>Electrical Parts</b>	
15011	Disc, High Limit (L200-40F, Manual Reset)
11565	Disc, Safety (F110-20F)
Not Available	Fan Limit Control (11" Probe) Order From Grainger #2E820
Not Available	Fan Limit Control (5" Probe) Order From Grainger #2E818
10050087	Knob, Rheostat (02107)
15070	Motor, Auger, M-K w/ Coupler (6 RPM, .80 Amps)
15060	Motor, Cup, M-K w/ Coupler (1.2 RPM, .41 Amps)
26M22	Power Cord, 8 ft. (02071)
528	Rheostat, Blower Speed Control (Knob, 10050087, Not Included) - 02082
16050205	Thermostat, Wall, Honeywell (Thermostat wire, P/N 16050204, not included)
16020204	Wire, Thermostat, 20' - 18 gage
<b>Hopper Parts</b>	
1105	Knob, Brass (Top & Ash Drawer) 01105
<b>Miscellaneous Parts</b>	
15035	Bearing, Pillow Block (for metering cup and auger)
BRN133	Blades, Cup (Each - Requires 2)
15041	Coupler, 1/2" Lovejoy (Cup & Auger Shaft) + Merkle Korph Motors
15039	Coupler, 3/8" Lovejoy (Auger & Cup Motor Shaft) Durham Motors
Not Available	Coupler, 5/16" Lovejoy (Cup Motor Shaft) Durham Motors w/ square gear box
15031	Gear, Aluminum Spyder
BRN120	Propeller, Cup/Auger Motor (Black - Durham Motors)
15078	Propeller, Cup/Auger Motor (White - Merkle Korph)

## LENNOX HEARTH PRODUCTS

### Service Replacement Parts List

### HWS070: Minuteman (Homewarmer)

### MPW070: Traeger

Pellet, Freestanding

MODEL YEARS: 1987 - 1988

ITEM NO	DESCRIPTION
<b>Door &amp; Door Parts</b>	
G4000	Door Assembly, Gold Glass (includes handle)
15101	Gasket (Interam), 7/32" x 9/16" x 18" (Cut to size, Requires 3 strips between glass and door)
86-128	Gasket Kit, 3/4" Door Rope (Includes Adhesive)
15099	Gasket, Lytherm, 1/8" x 1 1/2" x 12" (Cut to size, Requires 4 strips between glass and clips)
G2000-7	Glass, Arched (Ceram Pane, 9 1/2" x 15 3/4") - Gasket not included
10300	Handle Assembly, Door (Gold Doors only)
85-11	Spring, Door Handle Coil
<b>Electrical Parts</b>	
15011	Disc, High Limit (L200-40F, Manual Reset)
11565	Disc, Low Limit (Safety disc, F110-20F)
Not Available	Fan Limit Control (11" Probe) Order From Grainger #2E820
10050087	Knob, Rheostat (02107)
15070	Motor, Auger, M-K w/ Coupler (6 RPM, .80 Amps)
15060	Motor, Cup, M-K w/ Coupler (1.2 RPM, .41 Amps)
26M22	Power Cord, 8 ft. (02071)
528	Rheostat, Blower Speed Control (Knob, 10050087, Not Included) - 02082
16050205	Thermostat, Wall, Honeywell (Thermostat wire, P/N 16050204, not included)
16020204	Wire, Thermostat, 20' - 18 gage
<b>Hopper Parts</b>	
1105	Knob, Brass (01105)
<b>Miscellaneous Parts</b>	
15035	Bearing, Pillow Block (for metering cup and auger)
BRN133	Blade, Cup (Order 2 if set is needed)
15041	Coupler, 1/2" Lovejoy (Cup & Auger Shaft) + Merkle Korph Motors
15039	Coupler, 3/8" Lovejoy (Auger & Cup Motor Shaft) Durham Motors
Not Available	Coupler, 5/16" Lovejoy (Cup Motor Shaft) Durham Motors w/ square gear box
15031	Gear, Aluminum Spyder
BRN120	Propeller, Cup/Auger Motor (Black - Durham Motors)
15078	Propeller, Cup/Auger Motor (White - Merkle Korph)

## LENNOX HEARTH PRODUCTS

### Service Replacement Parts List

#### HWI040: Homewarmer

Pellet, Insert

MODEL YEARS: 1987 - 1988

ITEM NO	DESCRIPTION
<b>Door &amp; Door Parts</b>	
G4000	Door Assembly, Gold Glass (includes handle)
15101	Gasket (Interam), 7/32" x 9/16" x 18" (Cut to size, Requires 3 strips between glass and door)
86-128	Gasket Kit, 3/4" Door Rope (Includes Adhesive)
15099	Gasket, Lytherm, 1/8" x 1 1/2" x 12" (Cut to size, Requires 4 strips between glass and clips)
G2000-7	Glass, Arched (Ceram Pane, 9 1/2" x 15 3/4") Gasket not included
85-11	Spring, Door Handle Coil
<b>Electrical Parts</b>	
11573	Blower Motor, Room Air (Includes Propeller)
15011	Disc, High Limit (L200-40F, Manual Reset)
15070	Motor, Auger, M-K w/ Coupler (6 RPM, .80 Amps)
15060	Motor, Cup, M-K w/ Coupler (1.2 RPM, .41 Amps)
26M22	Power Cord, 8 ft. (02071)
410-25-3	Propeller, Blower Motor
16050205	Thermostat, Wall, Honeywell (Thermostat wire, P/N 16050204, not included)
16020204	Wire, Thermostat, 20' - 18 gage
<b>Hopper Parts</b>	
1105	Knob, Brass (01105)
<b>Surround &amp; Brass Trim</b>	
2047	Brass Trim (32" x 42") 02047
<b>Miscellaneous Parts</b>	
15035	Bearing, Pillow Block (for metering cup and auger)
BRN133	Blade, Cup (Order 2 if set is needed)
15041	Coupler, 1/2" Lovejoy (Cup & Auger Shaft) + Merkle Korph Motors
15039	Coupler, 3/8" Lovejoy (Auger & Cup Motor Shaft) Durham Motors
Not Available	Coupler, 5/16" Lovejoy (Cup Motor Shaft) Durham Motors w/ square gear box
15031	Gear, Aluminum Spyder
BRN120	Propeller, Cup/Auger Motor (Black - Durham Motors)
15078	Propeller, Cup/Auger Motor (White - Merkle Korph)

## LENNOX HEARTH PRODUCTS

### Service Replacement Parts List

### MP 35/50

MODEL YEARS: 1994 - 1999

ITEM NO	DESCRIPTION
<b>Door Parts</b>	
27M67	Clip Set, Glass
G50H	Door Assembly, Gold
15101	Gasket (Interam), 7/32" x 9/16" x 18" (Cut to size, Requires 3 strips between glass and door)
86-128	Gasket Kit, 3/4" Door Rope (Includes Adhesive)
15099	Gasket, Lytherm, 1/8" x 1 1/2" x 12" (Cut to size, Requires 4 strips between glass and clips)
10514	Glass, Rectangular, 9 9/16" x 16 13/16" (Gasket not included)
10300	Handle Assembly
11529	Hinge Pin, 10 L 18 (Bottom) Requires Welding
11531	Hinge Pin, Retrofit (Bottom) Requires Drill #3 (.213") and Tap 1/4'-28 UNF
11530	Hinge Pin, Short (Top) Requires Welding
85-11	Spring, Door Handle Coil
10362	Torque Plate (Latch)
<b>Electrical Parts</b>	
15001-1	Blower, Exhaust (7002-1668) 60 CFM; .65 Amps (Gasket not included (not required))
16490	Blower, Room Air (210 CFM; 1.2 Amps)
28M61	Control Board, Upgrade Controller 2000 - Replaces Control Board models 15015 / OII500, 15016 / OII500S, 15022 / 1000 and 15023 / Emerson (which has no model designation on the face plate)
15057	Disc, Fan - 3 Prong (140°-20F, 60T13)
15011	Disc, High Limit (L200-40F, 60T13, Manual Reset)
11565	Disc, Low Limit (Safety Disc F110-20F)
10050087	Knob, Rheostat (02107)
15070	Motor, Auger, M-K w/ Coupler (6 RPM, .80 Amps)
15060	Motor, Cup, M-K w/ Coupler (1.2 RPM, .41 Amps)
26M22	Power Cord, 8 ft. (02071)
528	Rheostat, Blower Speed Control (Knob, 10050087, Not Included) - 02082
16050205	Thermostat, Wall, Honeywell (Thermostat Wire, 16020204, not included)
16020204	Wire, Thermostat, 20' coil - 18 gage
<b>Hopper Parts</b>	
15162	Gasket, Burner/Hopper (Between bottom hopper flange and metering cup flange)
15089	Gasket, Hopper Lid (order 6 feet)
<b>Miscellaneous Parts</b>	
16348	Ash Drawer Assembly
16403	Auger Assembly, 11.688"
15035	Bearing, Pillow Block (for metering cup and auger) - units with bushings instad of pillow block bearings can replace the bushings with this bearing - it increases longevity of life and allows for better alignment.
BRN133	Blade, Cup (Order 2 if set is needed)
18491	Bushing, Bronze (Sf1620-4), For Metering Cup

1051	Cerawool, 1" x 6" x 1/4", Order 4
1054	Cerawool, 19" x 7 1/2" x 1/4"
15041	Coupler, 1/2" Lovejoy
16353	Door, Hinged Ash Drawer
27M80H	Gasket Kit, Ash Drawer, 3/8" (16' of 01098)
16446	Gasket, Flue Outlet
15163	Gasket, Room Air Blower
MS1802	Marble Set, Gray
MS1805	Marble Set, Green
70K99	Paint, Black Metallic, 12 oz. Spray #6309 (76-141MB)
15050-5	Plug, 1/8" Cup ①
<b>Logs &amp; Firebox Parts</b>	
15149	Firepot, Pellet
15169C	Corn Pot
15152-7	Flame Spreader (Screws On)
PL300	Log Set, 4 pc. Oak, *SN < 2101
PL500	Log Set, Split, *SN > 2101

\* SN - Stove serial number range, parts are compatible with:

">" = greater than # indicated, "<" = less than # indicated, "-" = numbers within range.

① Spacer for metering cup when burning corn or derates from 50K to 35K when burning pellets

## LENNOX HEARTH PRODUCTS

### Service Replacement Parts List

### MP40 (Rear Vent Model)

MODEL YEAR: 1991

ITEM NO	DESCRIPTION
<b>Door Parts</b>	
27M67	Clip Set, Glass
G50H	Door Assembly, Gold (includes handle)
15101	Gasket (Interam), 7/32" x 9/16" x 18" (Cut to size, Requires 3 strips between glass and door)
86-128	Gasket Kit, 3/4" Door Rope
15099	Gasket, Lytherm, 1/8" x 1 1/2" x 12" (Cut to size, Requires 4 strips between glass and clips)
10514	Glass, 9 1/2" x 17 (Rectangular Ceram Pane) Gasket not included
10300	Handle Assembly, Door
85-11	Spring, Door Handle Coil
<b>Electrical Parts</b>	
15001-1	Blower, Exhaust (60 CFM) Fits units above *SN 3462 (30 CFM exhaust blower P/N 15001 is no longer available, Order from Grainger 4C760) Ⓢ
H0222	Blower, Room Air, Left, 15009 (gasket 15163 not included) Note: This blower is used on the Left side on models MP40, MP240, MP250 & WP50. This blower is used on Right side for model HP40.
H0221	Blower, Room Air, Right, 15007 (gasket 15163 not included) Note: This blower is used on the Right side on models MP40, MP240, MP250 & WP50. This blower is used on left side for models HP40 & TP40/340/440. This blower is used in the center on model FP60.
28M61	Control Board, Upgrade Controller 2000 - Replaces Control Board models 15015 / OII500, 15016 / OII500S, 15022 / 1000 and 15023 / Emerson (which has no model designation on the face plate)
15057	Disc, Fan, 140-20F (Room Fan-Override, 3 prong)
15011	Disc, High Limit (L200-40F, Manual Reset)
11565	Disc, Low Limit (Safety disc F110-20F)
10050087	Knob, Rheostat (02107)
15070	Motor, Auger, M-K w/ Coupler (6 RPM, .80 Amps)
15060	Motor, Cup, M-K w/ Coupler (1.2 RPM, .41 Amps)
26M22	Power Cord, 8 ft. (02071)
528	Rheostat, Blower Speed Control (Knob, 10050087, Not Included) - 02082
16050205	Thermostat, Wall, Honeywell (Thermostat Wire, 16020204, not included)
16020204	Wire, Thermostat, 20' coil - 18 gage
<b>Hopper Parts</b>	
15089	Gasket Kit, Hopper Lid (order 6 feet)
15162	Gasket, Burner/Hopper (Between bottom hopper flange and metering cup flange)
1105	Knob, Brass Hopper (01105)
<b>Miscellaneous Parts</b>	
15035	Bearing, Pillow Block (for metering cup and auger)
15041	Coupler, 1/2" (Cup & Auger Shaft)
15039	Coupler, 3/8" (Cup & Auger Motor Shaft) Durham Motors Only
BRN133	Cup Blades (Each - requires 2)
15045	Cup, Metering (w/ blades)
27M80H	Gasket Kit, Ash Drawer (3/8" x 1/8" Flat x 16' of 01098)
15163	Gasket, Room Air Blower

15031	Gear, Aluminum Spyder
1135	Knob, Ash Drawer (01135)
H0534	Marble Set, Gray, MS1502 (marble gasket, 1ea. 1054 & 4ea. 1051, is provided w/appliance)
H0535	Marble Set, Green, MS1505 (marble gasket, 1ea. 1054 & 4ea. 1051, is provided w/appliance)
70K99	Paint, Black Metallic, 12 oz. Spray #6309 (76-141MB)
15050-5	Plug, 1/8" (spacer for metering cup when burning corn)
BRN120	Propeller, Cup/Auger Motor (Black - Durham Motors Only)
15078	Propeller, Cup/Auger Motor (White - Merkle Korp Motor Only)
<b>Firepot &amp; Firebox Parts</b>	
15803	Plate Set, Baffle (Metal) - Set of 2 (Fiber baffle is no longer available)
PL300	Log Set

\* SN - Stove serial number range, parts are compatible with:

">" = greater than # indicated, "<" = less than # indicated, "-" = numbers within range.

① To use Grainger Blower, air shutter from original Blower will need to be transferred to new Blower.

## LENNOX HEARTH PRODUCTS

### Service Replacement Parts List

### MP240 MODEL YEAR: 1992

ITEM NO	DESCRIPTION
<b>Door &amp; Door Parts</b>	
27M67	Clip Set, Glass
G50	Door Assembly, Gold (includes handle)
15101	Gasket (Interam), 7/32" x 9/16" x 18" (Cut to size, Requires 3 strips between glass and door)
86-128	Gasket Kit, 3/4" Door Rope
15099	Gasket, Lytherm, 1/8" x 1 1/2" x 12" (Cut to size, Requires 4 strips between glass and clips)
10514	Glass, 9 1/2" x 15 3/4" (Rectangular Ceram Pane) Gasket not included
10300	Handle Assembly, Door
85-11	Spring, Door Handle Coil
<b>Electrical Parts</b>	
15001-1	Blower, Exhaust (60 CFM) Fits units above *SN 3462 (30 CFM exhaust blower P/N 15001 is no longer available, Order from Grainger 4C760) Ⓢ
H0222	Blower, Room Air, Left, 15009 (gasket 15163 not included) Note: This blower is used on the Left side on models MP40, MP240, MP250 & WP50. This blower is used on Right side for model HP40.
H0221	Blower, Room Air, Right, 15007 (gasket 15163 not included) Note: This blower is used on the Right side on models MP40, MP240, MP250 & WP50. This blower is used on left side for models HP40 & TP40/340/440. This blower is used in the center on model FP60.
28M61	Control Board, Upgrade Controller 2000 - Replaces Control Board models 15015 / OII500, 15016 / OII500S, 15022 / 1000 and 15023 / Emerson (which has no model designation on the face plate)
15057	Disc, Fan, 140-20F (Room Air Blower, Override, 3 prong)
15011	Disc, High Limit (L200-40F, Manual Reset)
11565	Disc, Low Limit (Safety disc, F110-20F)
10050087	Knob, Rheostat (02107)
15070	Motor, Auger, M-K w/ Coupler (6 RPM, .80 Amps)
15060	Motor, Cup, M-K w/ Coupler (1.2 RPM, .41 Amps)
26M22	Power Cord, 8 ft. (02071)
528	Rheostat, Blower Speed Control (Knob, 10050087, Not Included) - 02082
16050205	Thermostat, Wall, Honeywell (Thermostat wire, 16020204, not included)
16020204	Wire, Thermostat, 20' - 18 gage
<b>Hopper Parts</b>	
15089	Gasket Kit, Hopper Lid (order 6 feet)
15162	Gasket, Burner/Hopper (Between bottom hopper flange and metering cup flange)
1105	Knob, Brass Hopper (Louvered Top) 01105
<b>Miscellaneous Parts</b>	
15035	Bearing, Pillow Block (for metering cup and auger)
BRN133	Blade, Cup (Order 2 if set is needed)
15041	Coupler, 1/2" (Cup & Auger Shaft)
15039	Coupler, 3/8" (Cup & Auger Motor Shaft) Durham Motors Only
15045	Cup, Metering (Includes blades)

27M80H	Gasket Kit, Ash Drawer (3/8" x 1/8" Flat x 16' of 01098)
15163	Gasket, Room Air Blower
15031	Gear, Aluminum Spyder
H0534	Marble Set, Gray, MS1502 (marble gasket, 1ea. 1054 & 4ea. 1051, is provided w/appliance)
H0535	Marble Set, Green, MS1505 (marble gasket, 1ea. 1054 & 4ea. 1051, is provided w/appliance)
70K99	Paint, Black Metallic, 12 oz. Spray #6309 (76-141MB)
15050-5	Plug, 1/8" (Spacer for metering cup when burning corn)
BRN120	Propeller, Cup/Auger Motor (Black - Durham Motors Only)
15078	Propeller, Cup/Auger Motor (White - Merkle Korf Motors Only)
<b>Firepot &amp; Firebox Parts</b>	
15169C	Corn Pot Assembly
15149	Firepot, Pellet
PL300	Log Set, Refractory (units w/ Firepots mfg'd before 3/95)
PL500	Log Set, Split (units w/ Fireports mfg'd after 3/95)

\* SN - Stove serial number range, parts are compatible with:

">" = greater than # indicated, "<" = less than # indicated, "-" = numbers within range.

① To use Grainger blower, air shutter from original blower will need to be transferred to new blower.

## LENNOX HEARTH PRODUCTS

### Service Replacement Parts List

#### MP250

MODEL YEAR: 1992

ITEM NO	DESCRIPTION
<b>Door &amp; Door Parts</b>	
27M67	Clip Set, Glass
G4000	Door Assembly, Gold (includes handle)
15101	Gasket (Interam), 7/32" x 9/16" x 18" (Cut to size, Requires 3 strips between glass and door)
86-128	Gasket Kit, 3/4" Door Rope
15099	Gasket, Lytherm, 1/8" x 1 1/2" x 12" (Cut to size, Requires 4 strips between glass and clips)
G2000-7	Glass, 9 1/2" x 15 3/4" Arched Ceram Pane (Gasket not included)
10300	Handle Assembly, Door
85-11	Spring, Door Handle Coil
<b>Electrical Parts</b>	
15001-1	Blower, Exhaust (60 CFM) Above *SN 3462 (30 CFM exhaust blower P/N 15001 is no longer available, Order from Grainger 4C760) ①
H0222	Blower, Room Air, Left, 15009 (gasket 15163 not included) Note: This blower is used on the Left side on models MP40, MP240, MP250 & WP50. This blower is used on Right side for model HP40.
H0221	Blower, Room Air, Right, 15007 (gasket 15163 not included) Note: This blower is used on the Right side on models MP40, MP240, MP250 & WP50. This blower is used on left side for models HP40 & TP40/340/440. This blower is used in the Center on model FP60.
28M61	Control Board, Upgrade, Controller 2000 - Replaces Control Board models 15015 / OII500, 15016 / OII500S, 15022 / 1000 and 15023 / Emerson (which has no model designation on the face plate)
15057	Disc, Fan 140-20F (Room Fan-Override, 3 prong)
15011	Disc, High Limit (L200-40F, Manual Reset)
11565	Disc, Low Limit (Safety disc, F110-20F)
10050087	Knob, Rheostat (02107)
15070	Motor, Auger, M-K w/ Coupler (6 RPM, .80 Amps)
15060	Motor, Cup, M-K w/ Coupler (1.2 RPM, .41 Amps)
26M22	Power Cord, 8 ft. (02071)
528	Rheostat, Blower Speed Control (Knob, 10050087, Not Included) - 02082
16050205	Thermostat, Wall, Honeywell (Thermostat Wire, 16020204, not included)
16020204	Wire, Thermostat, 20' coil - 18 gage
15029	Wire Harness
<b>Hopper Parts</b>	
15089	Gasket Kit, Hopper Lid (order 6 feet)
15162	Gasket, Burner/Hopper (Between bottom hopper flange and metering cup flange)
1105	Knob, Top Brass (Hopper) 01105
<b>Miscellaneous Parts</b>	
15035	Bearing, Pillow Block (for metering cup and auger)
BRN133	Blade, Cup (Order 2 if set is needed)
Not Available	Blades, Wiper/Multi-Fueled Units Only (1990 Models) Replaced by BRN133 (order 2)
15041	Coupler, 1/2" (Cup & Auger Shaft)
15039	Coupler, 3/8" (Cup & Auger Motor Shaft) Durham Motors Only

15501	Gasket, Flue Outlet
15031	Gear, Aluminum Spyder
H0534	Marble Set, Gray, MS1502 (marble gasket, 1ea. 1054 & 4ea. 1051, is provided w/appliance)
H0535	Marble Set, Green, MS1505 (marble gasket, 1ea. 1054 & 4ea. 1051, is provided w/appliance)
70K99	Paint, Black Metallic, 12 oz. Spray #6309 (76-141MB)
15050-5	Plug, 1/8" (Spacer for metering cup when burning corn)
15050-6	Plug, 3/8" (Spacer for metering cup when burning corn)
BRN120	Propeller, Cup/Auger Motor (Black - Durham Motors Only)
15078	Propeller, Cup/Auger Motor (White - Merkle Korpf Motors Only)
<b>Firepot &amp; Firebox Parts</b>	
15169C	Corn Pot Assembly (Includes 1/8" & 3/8" plugs)
16238	Cover, Clean Out (38108 Gasket not included)
15149	Firepot, Pellet
38108	Gasket, Clean-Out cover
PL300	Log Set, Refractory (units w/ Firepots mfg'd before 3/95)
PL500	Log Set, Split (units w/ Fireports mfg'd after 3/95)
15411	Plate, Baffle

\* SN - Stove serial number range, parts are compatible with:

">" = greater than # indicated, "<" = less than # indicated, "-" = numbers within range.

① To use Grainger blower, air shutter from original blower will need to be transferred to new blower.

## LENNOX HEARTH PRODUCTS

### Service Replacement Parts List

### NF2000

MODEL YEARS: 1998 - 2000

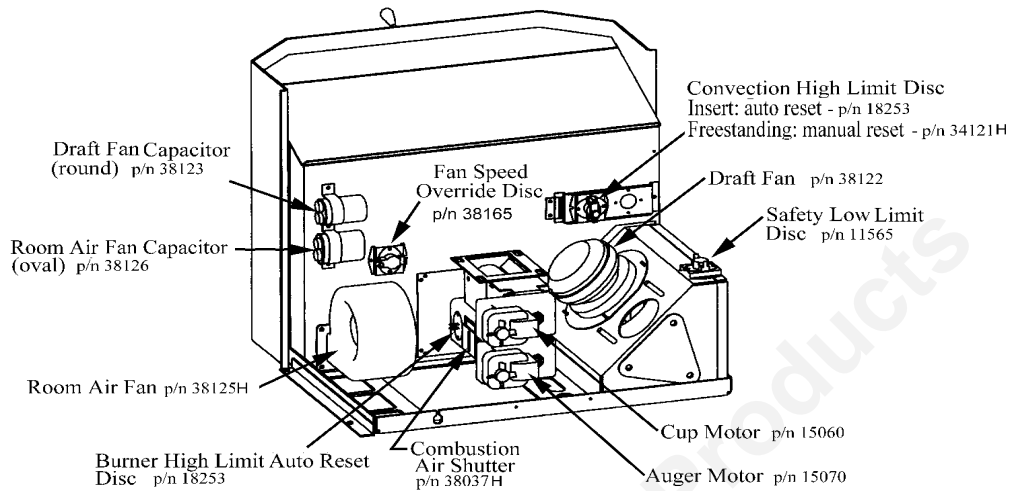
ITEM NO	DESCRIPTION
<b>Door Parts</b>	
38040H	Door Assembly, Complete
39010	Door Opener, Allen Head (w/ coil handle)
27M80H	Gasket Kit, Ash Drawer (3/8" x 1/8" Flat x 16' of 01098) ①
26M81	Gasket Kit, Door 3/4" Rope (10' of 11547)
27M79	Gasket Kit, Glass 1/8 x 1/2" (9' of 01060)
34009	Glass, Center, 11 7/16 x 16 9/16" (Gasket not included)
38047	Glass, Side, 3 1/4 x 11 7/16" (Gasket not included)
38042	Hinge Pins, Door, Female (Order 2 if set is needed)
38043	Hinge Pins, Door, Male (Order 2 if set is needed)
39250	Latch Assy, Door (w/ 5/16-18 x 1-1/2" bolt)
8075	Torque Plate (Latch)
<b>Electrical Parts</b>	
38122	Blower, Exhaust (EBM 90 Cfm) (1950 Rpm, 30 Amps) Gasket not included
38125H	Blower, Room Air (EBM 160 Cfm) (Includes Gasket 38127)
38123	Capacitor, Exhaust Blower (Round)
38126	Capacitor, Room Air Blower (Oval)
38120	Control Board, 5 heat settings
38165	Disc, Fan - 3 Prong (F155°-20F)
18253	Disc, High Limit (L250°-40F, Auto Reset)
34121H	Disc, High Limit (L250°-40F, Manual Reset)
11565	Disc, Low Limit (Safety Disc, F110°- 20F)
38092	Gasket, Exhaust Blower
38127	Gasket, Room Air Blower
527	Knob, Rheostat
15070	Motor, Auger, M-K w/ Coupler (6 RPM, .80 Amps)
15060	Motor, Cup, M-K w/ Coupler (1.2 RPM, .41 Amps)
38124	Power Cord (includes Wire Harness)
38148	Pressure Switch
528	Rheostat, Blower Speed Control (Knob, 527, Not Included) - 02082
<b>Hopper Parts</b>	
38146	Gasket, Hopper/Burner (Between bottom hopper flange and metering cup flange)
38022	Lid, Hopper
<b>Feed System Component Parts</b>	
38130	Auger Assembly, 12 5/16" Overall
15035	Bearing, Pillow Block (for metering cup and auger) *
38054	Blades, Metering Cup (Order 2 if set is needed)
18491	Bushing, Bronze (For Metering Cup) (Order 2 if set is needed)
15041	Couplers, 1/2" Lovejoy (Order 4 is set is needed)
38053	Cup, Metering
15031	Gear, Spyder (Aluminum) (Order 2 if set is needed)
15078	Propeller (Cup and Auger Motors Fan Blade)

<b>Miscellaneous Parts</b>	
16348	Ash Drawer Assembly
38087	Collar, 3" Stack
38029	Cover, Clean-Out Access
38068	Gasket, Ash Drawer (Order 2' minimum)
38096	Gasket, Stack (For Flue Outlet Assy) (Top & Top/Rear)
38099	Igniter Kit, Autostart
70K99	Paint, Black Metallic, 12 oz. Spray #6309 (76-141MB)
16050205	Thermostat, Wall, Honeywell (Thermostat Wire, P/N 16020204, is not included)
16020204	Wire, Thermostat, 20' coil - 18 gage
<b>Logs &amp; Firebox Parts</b>	
38028	Baffle Plate
38100	Brick Panel Set, Fiber
38050	Firepot, Pellet
38098	Gasket, Lower Rear Exhaust Outlet
38068	Gasket, Burner Tube 1/8 X 1/2" (Requires 2')
38108	Gasket, Clean Out Cover
38157H	Gasket, Firepot (Lytherm)
38101	Log Assembly

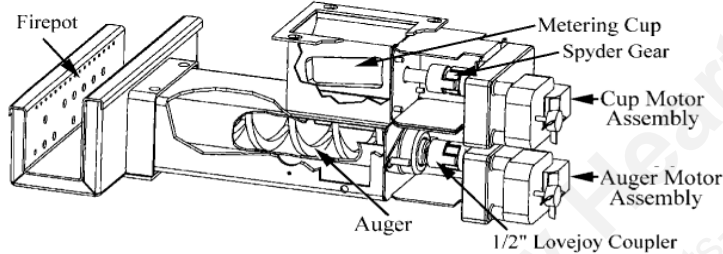
① Gasket needs to be cut in five lengths, (2) 11", (2) 2 1/2", (1) 16 1/4"

\* The metering cup bushings can be replaced with pillow block bearings to allow for better alignment

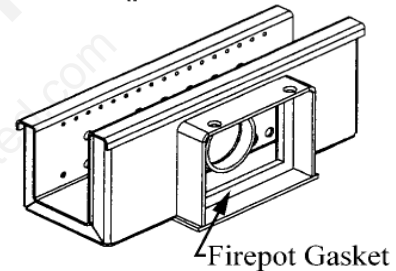
Electrical Components



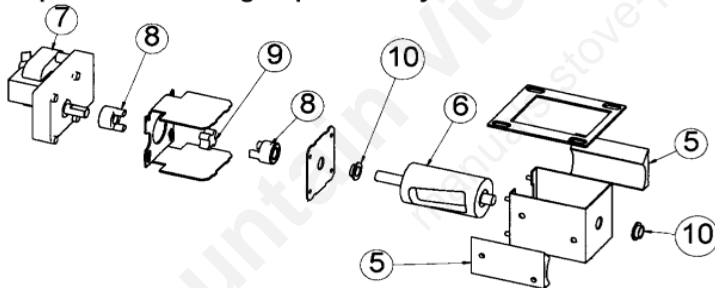
Burner Assembly



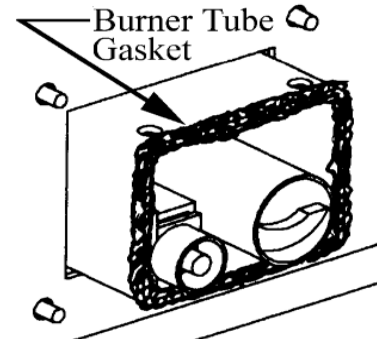
Firepot Gasket (p/n 38157H)



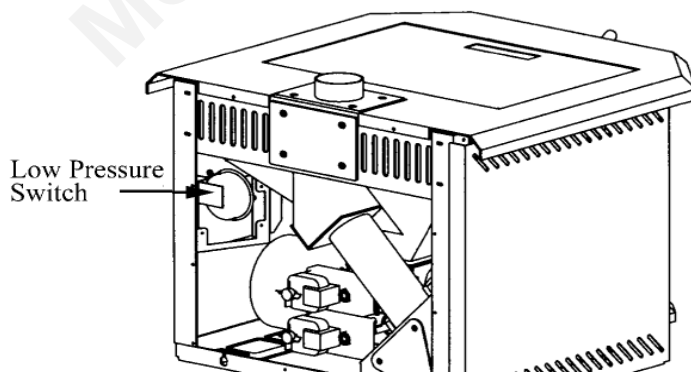
Cup Motor / Metering Cup Assembly



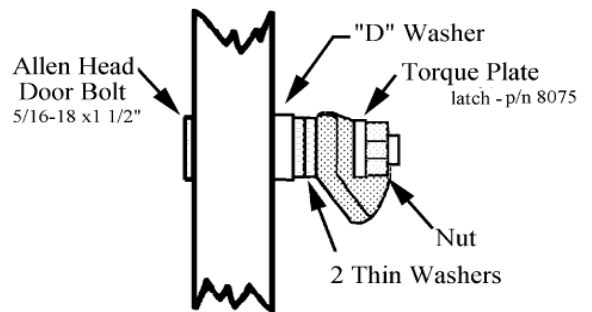
Burner Tube Gasket (p/n 38068)



Low Pressure Switch – NF2000 (p/n 38148)



Latch Assembly (P/N 39250)



## LENNOX HEARTH PRODUCTS

### Service Replacement Parts List

### NF2000I

MODEL YEARS: 1998 - present

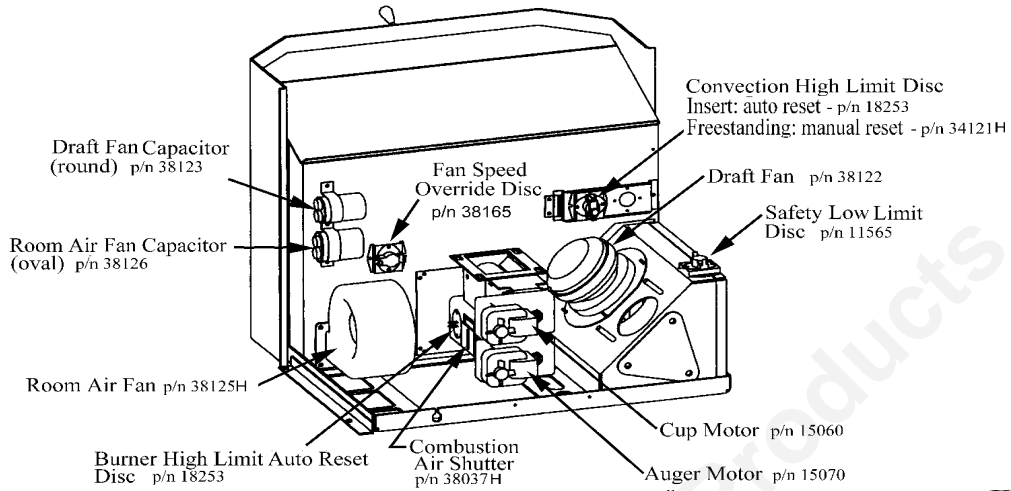
ITEM NO	DESCRIPTION
<b>Door Parts</b>	
38040H	Door Assembly, Gold (38040)
39010	Door Opener, Allen Head (w/ Coil Handle)
26M81	Gasket Kit, Door 3/4" Rope (10' of 11547)
27M80H	Gasket Kit, Glass (3/8" x 1/8" Flat x 16' of 01098) ①
27M79	Gasket, Door Glass 1/8 x 1/2" (9' of 01060)
34009	Glass, Center, 11 7/16 x 16 9/16" (Gasket not included)
38047	Glass, Side, 3 1/4 x 11 7/16" (Gasket not included)
38042	Hinge Pins, Door, Female (Order 2 if set is needed)
38043	Hinge Pins, Door, Male (Order 2 if set is needed)
39250	Latch Assy (w/ 5/16-18 x 1 1/2" bolt)
8075	Torque Plate (Latch)
<b>Electrical Parts</b>	
38122	Blower, Exhaust (EBM 90 CFM) (1950 RPM, 30 Amps) Gasket not included
38125H	Blower, Room Air (EBM 160 CFM) (Includes Gasket) 38125
38123	Capacitor, Exhaust Blower (Round)
38126	Capacitor, Room Air Blower (Oval)
38515H	Control Board, 5 heat settings (38515)
38165	Disc, Fan - 3 Prong (F155°-20F)
18253	Disc, High Limit (L250°-40F, Auto Reset)
11565	Disc, Safety (610044) (F110° - 20F)
38092	Gasket, Exhaust Blower
38127	Gasket, Room Air Blower
527	Knob, Rheostat
15070	Motor, Auger, M-K w/ Coupler (6 RPM, .80 Amps)
15060	Motor, Cup, M-K w/ Coupler (1.2 RPM, .41 Amps)
38124	Power Cord (Includes Wire Harness)
528	Rheostat, Blower Speed Control (Knob, 527, Not Included) - 02082
38148	Switch, Low Pressure
<b>Hopper Parts</b>	
38146	Gasket, Hopper/Burner (Between bottom hopper flange and metering cup flange)
38517	Hopper Lid w/Hinge
<b>Surround Parts</b>	
2046	Brackets, Surround Trim (Corner Keys) Order 2 if set is needed.
32130	Trim, Surround, 32 x 42" (Gold Tone)
<b>Feed System Component Parts</b>	
38130	Auger Assembly, 12 5/16" Overall
15035	Bearing, Pillow Block (for metering cup and auger) *
38054	Blades, Metering Cup (Order 2 if set is needed)
18491	Bushing, Bronze (For Metering Cup) (Order 2 if set is needed)
15041	Couplers, 1/2" Lovejoy (Order 4 if set is needed)
38053	Cup, Metering
15031	Gear, Spyder (Aluminum) (Order 2 if set is needed)
15078	Propeller (Feed Motors Fan Blade)

<b>Miscellaneous Parts</b>	
16348	Ash Drawer Assembly
38087	Collar, 3" Stack
38029H	Cover, Clean-Out Access
27M80H	Gasket Kit, Ash Drawer (3/8" x 1/8" Flat x 16' of 01098)
70K99	Paint, Black Metallic, 12 oz. Spray #6309 (76-141MB)
38069H	Pan, Ash Drawer (38069)
16050205	Thermostat, Wall, Honeywell (Thermostat Wire, P/N 16020204, is not included)
16020204	Wire, Thermostat, 20' coil - 18 gage
<b>Logs &amp; Firebox Parts</b>	
38028	Baffle Plate
38530	Brick Panel Set, Fiber
38050	Firepot, Pellet
38068	Gasket, Burner Tube 1/8 x 1/2" (Order 2')
38157H	Gasket, Firepot (Lytherm)
38101	Log Assembly

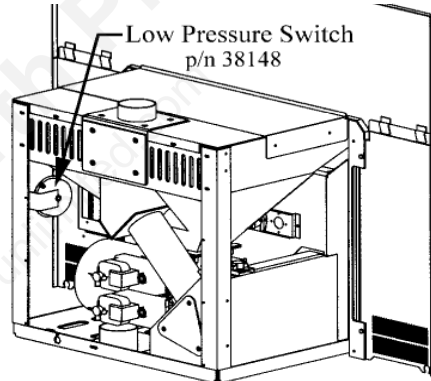
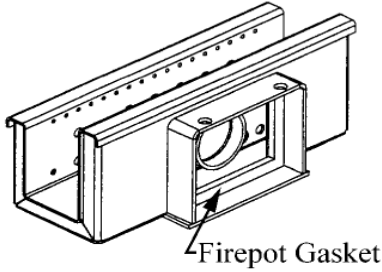
① Gasket needs to be cut in five lengths, (2) 11", (2) 2 1/2", (1) 16 1/4"

\* The metering cup bushings can be replaced with pillow block bearings to allow for better alignment

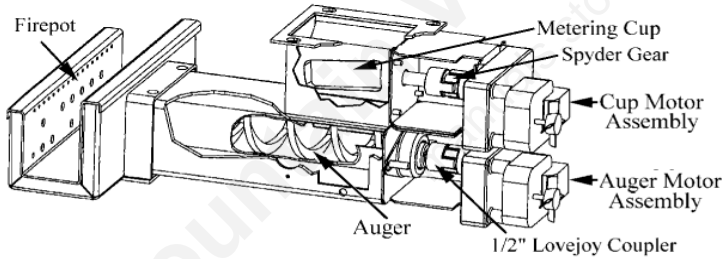
Electrical Components



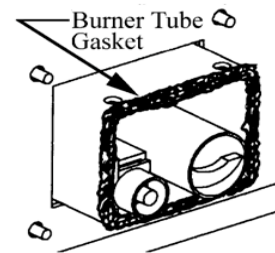
Firepot Gasket (p/n 38157H)



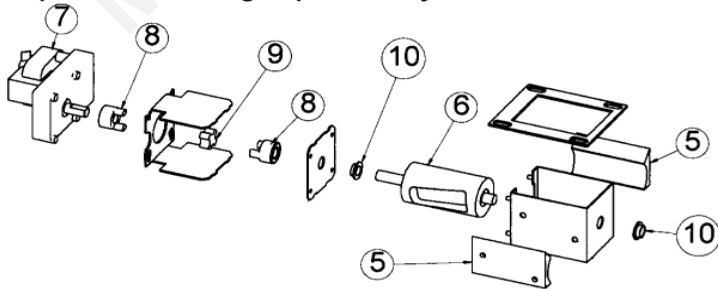
Burner Assembly



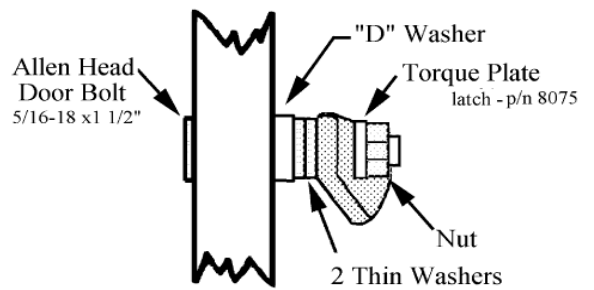
Burner Tube Gasket (p/n 38068)



Cup Motor / Metering Cup Assembly



Latch Assembly (P/N 39250)



## LENNOX HEARTH PRODUCTS

### Service Replacement Parts List

#### PI35

MODEL YEARS: 1995 - 1997

ITEM NO	DESCRIPTION
<b>Door Parts</b>	
27M65	Clip Set, Glass
G4000	Door Assembly, Cast Gold, Handle Not Included (Black door not available)
15101	Gasket (Interam), 7/32" x 9/16" x 18" (Cut to size, Requires 3 strips between glass and door)
26M81	Gasket Kit, Door 3/4 Inch Rope (10' of 11547)
27M80H	Gasket Kit, Glass (3/8" x 1/8" Flat x 16' of 01098)
15099	Gasket, Lytherm 1/8" X 1 1/2", Requires 4 Btw Glass & Clip
35047H	Gasket, Side Glass (35047)
35046H	Glass, Side 3 3/8" x 8 3/4" (Gasket not included) 35046
G2000-7	Glass, Small Arched 9 3/8" x 15 3/4" (Gasket not included)
10300	Handle Assembly
11531	Hinge Pin (Retrofit), Requires Drill #3 (.213) & Tap 1/4"-28 UNF
11529	Hinge Pin 10 L 18 (Original), Requires Welding
85-11	Spring Door Handle Coil
10362	Torque Plate (Latch)
<b>Electrical Parts</b>	
15001-1	Blower, Exhaust (7002-1668) (60 CFM, .65 Amps) Gasket not included (not required)
15140	Blower, Room Air (160 CFM, .9amps), Includes Gasket (replaces 350449H, no longer available)
35049H	Blower, Room Air (265 CFM, 1.86amps), Includes Gasket
28M61	Control Board, Upgrade Controller 2000 - Replaces, Control Board models 15015 / OII500, 15016 / OII500S, 15022 / 1000 and 15023 / Emerson (which has no model designation on the face plate)
15057	Disc, Fan (Room Air Blower Override, 3 prong, 140-20F)
15012	Disc, High Limit (L200-40F, Auto) Burner
15011	Disc, High Limit (Manual Reset, L200-40F) Blower
11565	Disc, Low Limit (Safety Disc, F110-20F)
35058	Gasket (Insulation), Control Board
15163	Gasket, Room Air Blower
10050087	Knob, Rheostat (02107)
15070	Motor, Auger, M-K w/ Coupler (6 RPM, .80 Amps)
15060	Motor, Cup, M-K w/ Coupler (1.2 RPM, .41 Amps)
70K99	Paint, Black Metallic, 12 oz. Spray #6309 (76-141MB)
26M22	Power Cord, 8 ft. (02071)
528	Rheostat, Blower Speed Control (Knob, 10050087, Not Included) - 02082
35027	Wire Harness
<b>Surround Parts</b>	
35070	Surround Assembly 32" x 42"
18675	Trim, Surround (Gold Tone) 32 x 42"
<b>Hopper Parts</b>	
15089K	Gasket Kit, Hopper Lid (6' of 15089)
35051	Gasket, Hopper (Between bottom hopper flange and metering cup flange)

<b>Miscellaneous Parts</b>	
35033	Auger Assembly
15035	Bearing, Pillow Block (for metering cup and auger)
BRN133	Blades, Cup (Order 2 if set is needed)
15140	Blower, Room Air (High Temp), This blower kit is designed for higher elevations and/or restrictive vent configurations (rated for higher temperatures)
35080	Cup, Metering
35024H	Door, Clean Out Access
15050-5	Plug, 1/8" (spacer for metering cup when burning corn)
35041H	Spring Latch (For Ash Drawer), Order 2 if set is needed (35041)
16050205	Thermostat, Wall, Honeywell (Thermostat Wire, P/N 16020204, is not included)
16020204	Wire, Thermostat, 20' coil - 18 gage
<b>Logs &amp; Firebox Parts</b>	
15169C	Corn Pot Kit
15149	Firebox, Pellet
PL500	Log Set
35028	Plate, Baffle (Order 2 if set is needed)

**LENNOX HEARTH PRODUCTS****Service Replacement Parts List****RP45 / RP45BP****MODEL YEARS: 1993 - 1995**

ITEM NO	DESCRIPTION
<b>Door Parts</b>	
86-128	Gasket Kit, Door, 3/4 Inch Rope (Includes Adhesive)
27M81	Gasket Kit, Glass (10' of 10580)
18461	Glass, 8" x 10 3/4" (Gasket not included)
18400	Handle Assembly
11531	Hinge, Pin (Retrofit), Requires Drill #3 (.213) & Tap 1/4"-28 UNF
11529	Hinge, Pin 10 L 18 (Original), Requires Welding
85-11	Spring, Door Handle Coil
10362	Torque Plate (Latch)
<b>Electrical Parts</b>	
14M41	Blower Kit, Room Air
18470	Control Board, AC, 5 Heat Settings
Not Available	Control Board, DC (18478), 5 heat settings
14440	Dial-A-Temp
15011	Disc, High Limit (L200-40F, Manual Reset)
11565	Disc, Low Limit (Safety Disc, F110°-20F 60T12)
15060	Motor, AC Cup, M-K w/ Coupler, 1.2 RPM; .34 Amps
Not Available	Motor, DC Cup, M-K w/ Coupler, .08 Amps (18497)
26M22	Power Cord, 8 ft. (02071)
<b>Hopper Parts</b>	
11950068	Bracket, Hopper Lid Support
15089	Gasket Kit, Hopper Lid (order 6 feet)
15162	Gasket, Burner/Hopper
<b>Miscellaneous Parts</b>	
BRN133	Blade, Metering Cup (order 2 if set is needed)
18491	Bushing, Bronze (for metering cup), order 2 if set is needed
18480	Cup, Metering (Includes Blades)
180	Knob, Control Panel
70K99	Paint, Black Metallic, 12 oz. Spray #6309 (76-141MB)
<b>Firebox Parts</b>	
15169C	Corn Pot
18401	Firepot, Pellet and Corn

## LENNOX HEARTH PRODUCTS

### Service Replacement Parts List

### WP50

MODEL YEARS: 1989 - 1991

ITEM NO	DESCRIPTION
<b>Door &amp; Door Parts</b>	
27M65	Clip Set, Glass
G4000	Door Assembly, Gold (includes handle)
86-128	Gasket Kit, 3/4" Door (Includes Adhesive)
15101	Gasket, Interam, 7/32" x 9/16" x 18" (Cut to size. Requires 3 strips between glass and door)
15099	Gasket, Lythrem (Between Glass & Clips. Cut to Size, 4 strips, between glass and clips)
G2000-7	Glass, 9 1/2" x 15 3/4" (Arched Ceram Pane) Gasket not included
10300	Handle Assembly, Door (Gold Door)
85-11	Spring, Door Handle Coil
<b>Electrical Parts</b>	
15001-1	Blower, Exhaust (60 CFM) Fits units *SN >2375 (30 CFM exhaust blower *SN 15001 is no longer available) ⓘ
H0222	Blower, Room Air, Left, 15009 (gasket 15163 not included) Note: This blower is used on the Left side on models MP40, MP240, MP250 & WP50. This blower is used on Right side for model HP40.
H0221	Blower, Room Air, Right, 15007 (gasket 15163 not included) Note: This blower is used on the Right side on models MP40, MP240, MP250 & WP50. This blower is used on left side for models HP40 & TP40/340/440. This blower is used in the Center on model FP60.
28M61	Control Board, Upgrade Controller 2000 - Replaces Control Board models 15015 / OII500, 15016 / OII500S, 15022 / 1000 and 15023 / Emerson (which has no model designation on the face plate)
15057	Disc, Fan (Room Fan Override, 3 Prong, 140 - 20 F)
15011	Disc, High Limit (Manual Reset L200-40F)
11565	Disc, Low Limit (Safety Disc, F110-20F)
10050087	Knob, Rheostat (02107)
15070	Motor, Auger, M-K w/ Coupler (6 RPM, .80 Amps)
15060	Motor, Cup, M-K w/ Coupler (1.2 RPM, .41 Amps)
15016-1	Pigtail Kit, Control Board (1989 models using Control Board w/start Button require this kit. Controller 2000, p/n 28M61, includes this kit)
26M22	Power Cord, 8 ft. (02071)
528	Rheostat, Blower Speed Control (Knob, 10050087, Not Included) - 02082
<b>Hopper Parts</b>	
15089	Gasket Kit, Hopper Lid (order 6 feet)
15162	Gasket-Burner/Hopper (Between bottom hopper flange and metering cup flange)
1105	Knob, Top Brass, Hopper (01105)
<b>Miscellaneous Parts</b>	
15010	Auger Assembly, 17"
15035	Bearing, Pillow Block (for metering cup and auger)
BRN133	Blade, Cup (Order 2 if Set is Needed)
15041	Coupler, 1/2" (Cup & Auger Shaft)
15039	Coupler, 3/8" (Cup & Auger Motor Shaft) Durham Motors Only

15163	Gasket, Room Air Blower
70K99	Paint, Black Metallic, 12 oz. Spray #6309 (76-141MB)
15050-6	Plug, 3/8" (Spacer for metering cup when burning corn)
15078	Propeller, Cup/Auger Motor (White - Merkle Korpf Motors Only)
BRN120	Propeller, Cup/Auger Motor(Black - Durham Motors Only)
16050205	Thermostat, Wall, Honeywell (Thermostat Wire, P/N 16020204, is not included)
Not Available	Wiper Blades (1990 Cornburners. Order 2 ea. BRN133 blades)
16020204	Wire, Thermostat, 20' coil - 18 gage
<b>Firepot &amp; Firebox Parts</b>	
15169C	Corn Pot Kit
15149	Firepot, Pellet
15152-7	Flame Spreader (screws onto firepot)
PL300	Log Set, Refractory (units w/ Firepots mfg'd before 3/95)
PL500	Log Set, Split (units w/ Fireports mfg'd after 3/95)
15411	Plate, Baffle

\* SN - Stove serial number range, parts are compatible with:

">" = greater than # indicated, "<" = less than # indicated, "-" = numbers within range.

① Can be substituted (Requires drilling to mount. Ref. Grainger PN 4C760)

## LENNOX HEARTH PRODUCTS

### Service Replacement Parts List

### PF70 (Pure Fire) - Pellet Freestanding

### PF70I (Pure Fire) - Pellet Insert

MODEL YEARS: 1995 - 1997

ITEM NO	DESCRIPTION
<b>Door Parts</b>	
86-128	Gasket Kit, 3/4" Rope Door (Includes Adhesive)
27M81	Gasket Kit, Glass (10' of 10580)
10082	Glass, 9" x 13" Notched (Gasket not included)
8070	Handle Assembly
718	Hinge Pin, 5/8" x 2 Solid Rivet (00718)
8076	Spring, Door Handle Coil
8075	Torque Plate (Latch)
<b>Electrical Parts</b>	
7423	Blower, Exhaust (1.10amp, 3000 RPM, 83 CFM)
H0222	Blower, Room Air, .90amp (140 CFM, *SN > 702477) ⓘ
18253	Disc, High Limit (L250-40F/On Hopper)
821	Disc, Low Limit (Ceramic, Fan Disc, F135-20F) 00821
8240	Gasket, Exhaust Blower Housing
15060	Motor, Auger, 1.2 RPM, M-K, .34 amp (*SN > 702477)
16050205	Thermostat, Wall, Honeywell (Thermostat wire P/N 16020204 is not included)
16020204	Wire, Thermostat, 20' Coil - 18 gage
<b>Miscellaneous Parts</b>	
76-141	Paint, Satin Black, (Spray, 12 oz., 1990)
<b>Firebox Parts</b>	
10078	Blanket, Baffle

\* SN - Stove serial number range, parts are compatible with:

">" = greater than # indicated, "<" = less than # indicated, "-" = numbers within range.

ⓘ For units lower than this Serial Number, order through Grainger #2C647.