

LENNOX®

INSTALLATION INSTRUCTIONS

HEARTH PRODUCTS

SCRAPER ROD KIT
PART NO. 14750014, FOR MODEL PROFILE 30 FS

OPKIT CONTENTS:

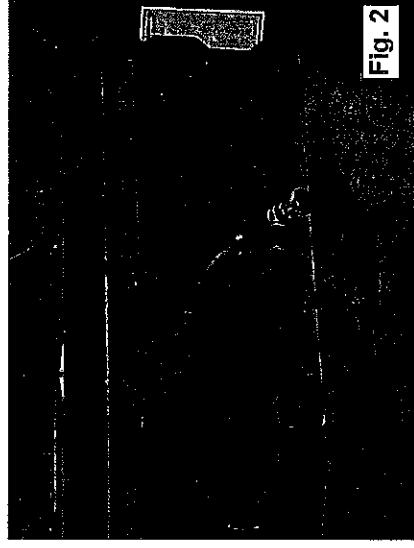
- 2 ea. 1/4-20 Self Locking Nuts
- 1 ea. Straight Wrench
- 1 ea. Scraper Rod
- 2" Silver Tape

TOOLS REQUIRED:

- Cutting Wheel Or Hacksaw (or other cutting device for removing old scraper rod)
- Locking Pliers
- Vice Grip Clamps (can be installed without these)
- 1/4" Nut Driver

INSTALLATION INSTRUCTIONS:

- 1) Remove the heat shield using a 1/4" nut driver and set aside (see figure 1).

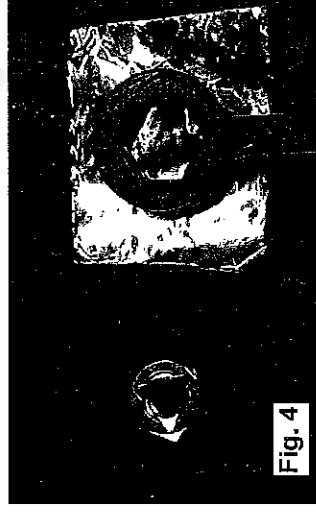


- 2) If the old scraper rod is still engaged in the scraper plate, go to step three, if the rod is off of the stove, skip to step 4. Otherwise, see following and refer to figure 2 & 3.
- 3) Scraper rod still attached:
 - a. Pull the scraper plate and rod up to the top of the heat exchange tubes.
 - b. With the locking pliers, clamp the old scraper rod at the top of the heat exchange tubes (see figure 2).
 - c. Cut off as much of the old scraper rod as possible with a hacksaw or any other cutting device (see figure 3).
 - d. Open the locking pliers and remove the old scraper rod.

Note: The old piece of the scraper rod left in the stove will not harm the stove or its performance. Although it can be removed by maneuvering it to either side until it falls into the ash clean-out ports where it can be removed.

- 4) Place a square piece of tape (enough to wrap around the straight wrench) onto the straight wrench. Take a 1/4-20 nut and place it in the straight wrench. It is very important to have the triangle indentation on the nut facing the tape. Wrap the rest of the tape around the nut securing it into place (see figure 4, 5 & 6).

Note: If the triangle indentation on the nut is facing up, towards the new scraper rod, threading the two together will be much more difficult.



KIT CONTENTS:

- 4 ea. 1/4-20 Self Locking Nuts
- 1 ea. Offset Wrench
- 1 ea. Scrapper Rod
- 2" Silver Tape

TOOLS REQUIRED:

- Cutting Wheel Or Hacksaw (cutting device for old scrapper rod)
- Locking Pliers
- Vice Grip Clamps (can be installed without these)
- 3/8" Wrench

INSTALLATION INSTRUCTIONS:

1. Using a 3/8" wrench, remove the top and bottom heat shields, including trim bars and set aside (the bolts are on the under side of the heat shield as shown in figure 1).
2. If old scrapper rod is still engaged in the scrapper plate, go to step three, if the rod is off of the stove, skip to step 4.
3. If the scrapper rod is still attached (RIV nut and rod are loose but are still inserted through the scrapper), continue with step 3 and refer to figure 2 and 3. If the scrapper rod has pulled out of the scrapper and has been removed from the stove, skip to step 4.
 - a. Pull the scrapper plate and rod up to the top of the heat exchange tubes.
 - b. With the locking pliers, clamp the old scrapper rod as shown in fig 2.
 - c. Cut off as much of the old scrapper rod as possible with the hacksaw (or any other cutting device).
 - d. Undo the locking pliers and remove the old scrapper rod.

Note: The old piece of the scrapper rod left in the stove will not harm the stove or its performance.

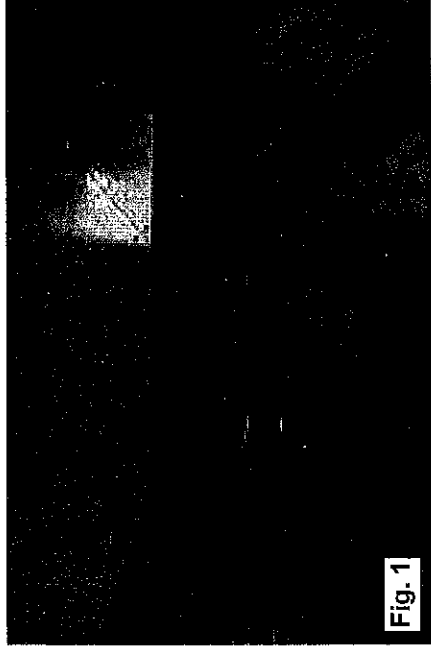


Fig. 1



Fig. 2

4. Place the 1/4-20 nut onto a square piece of tape (enough to wrap around the offset wrench. See figure 3). Take the offset wrench and place it on the nut and tape. It is very important to have the triangle indentation on the nut facing the tape as shown in figure 3. Wrap the rest of the tape around the offset wrench securing it into place (see figure 4).

Note: If the triangle indentation on the nut is facing up, towards the new scrapper rod, threading the two together will be much more difficult.

5. With the scrapper plate back at the bottom, maneuver the offset wrench sideways and in-between the 3rd and 4th tubes from the left of the stove as shown in fig 5. Slide the offset wrench up towards the front of the heat exchange tubes and thread the new scrapper rod into place.

Note: If the backside of the RIV nut on the scrapper plate has broken off, thread the nut about a half an inch up the new scrapper rod. If the RIV nut is still intact, thread the nut 3/4" up the rod.

6. Remove the offset wrench and prepare another 1/4"-20 nut by repeating step 4.



Fig. 3

Triangle side facing
down toward tape