

Related Service Parts -

1-90-857000-1

Date Printed

2023-08-08

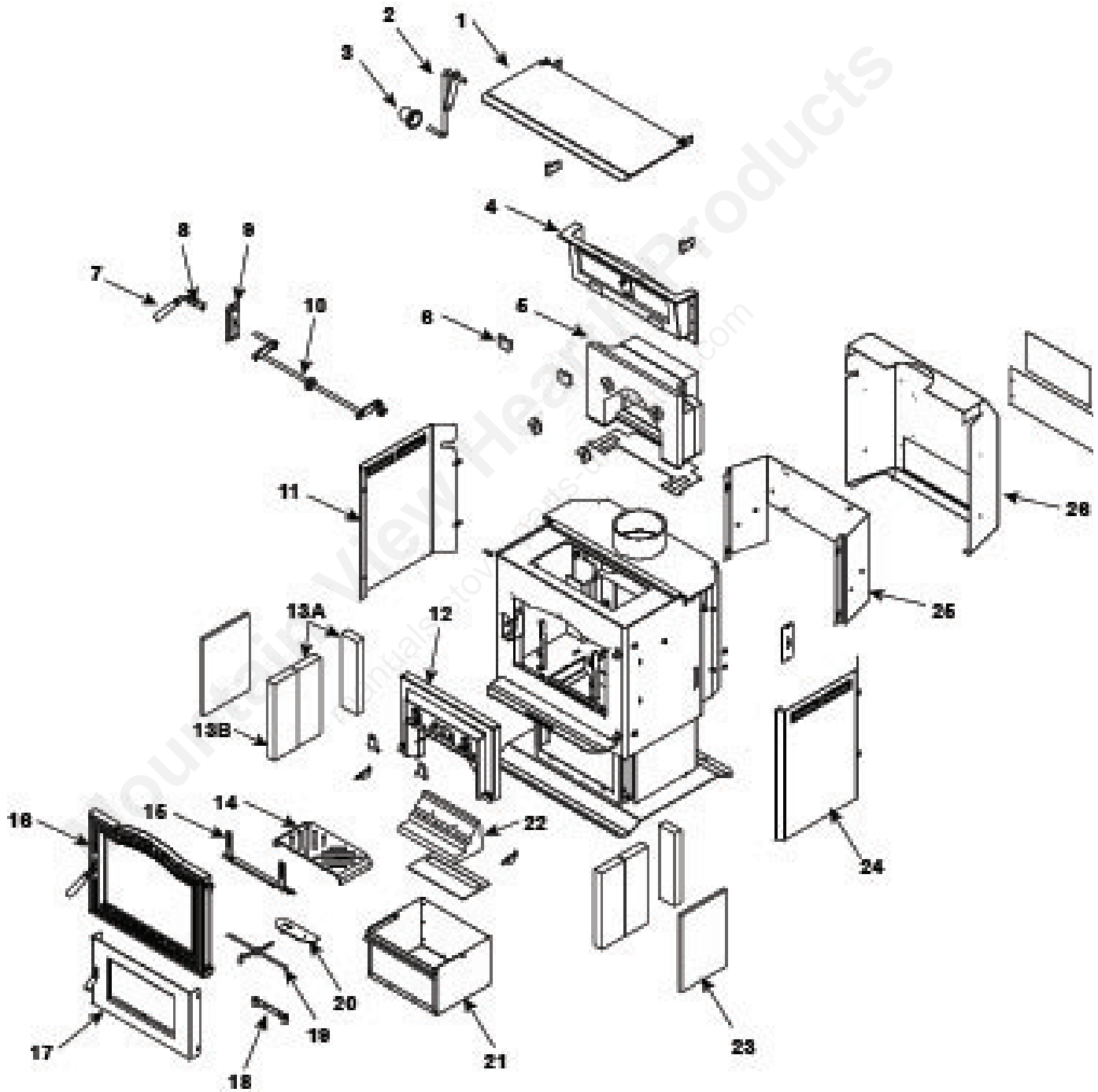
TL2.6, BLACK, WOOD W/PED

Beginning Manufacturing Date

2011-09-13

Ending Manufacturing Date

2018-04-27



Item #	Description	Comments	Service Part	Volume	Weight	Qty Per Package	Stocked At Depot	My Purchase Price USD	MSRP USD
1	TOP LOAD DOOR ASY-TL2.0	Pre SN #008850439	1-10-856009A	1.750	25.350	1	Y	**	\$516.00

1	TOP LOAD DOOR ASY-TL2.0/6	PostSN #008850439	1-10-856509A	1.204	25.350	1	42	**	\$528.00
	1-1/2 X 3/8 BULB PSA-5FT	5 Ft	1-00-10050	0.104	1.000	1	Y	**	\$27.00
	TL2/3 HINGE SPACER-SALES	Qty 2 req	2-00-40021L	0.014	1.000	1	42	**	\$8.00
	TOP LOAD DOOR-BTM HINGE	Set of 2	1-00-856084	0.014	0.450	1	42	**	\$211.00
	TLC/OAK/TL3 WOOD KNOB-3PK	Pre SN #008850439	3-40-08746-3	0.014	1.000	3	21	**	\$43.00
	HNDL ASHDOOR-HARDWOOD-BLK	Post 008851329	1600663	0.063	0.500	1	Y	**	\$6.00
2	TLC DAMPER LINK ARM-SALES	Post 008850439	1-10-08722	0.306	3.000	1	42	**	\$212.00
3	WOOD KNOB & BOLT-2SETS	2 Sets	1-00-06228	0.014	1.000	2	42	**	\$37.00
4	TL2/2.6 DAMPER FRAME ASY		1-10-250109A	1.204	28.250	1	Y	**	\$561.00
	OAK REAR BRICK RETNR SET		1-00-249135	0.014	1.000	2	42	**	\$23.00
	3/8 4 STRAND WHITE-30 FT	30 Ft	1-00-00888†	0.104	1.000	1	N	**	\$44.00
	DAMPER SHAFT RET & HDWR	Set of 2	1-00-249145	0.014	0.500	1	Y	**	\$38.00
	DAMPER KIT		1-10-249107	0.792	9.000	1	21	**	\$223.00
	IIN SINGLE PLY-10 FT/KIT	10 Ft	1-00-88100	0.031	1.000	1	Y	**	\$43.00
5	FIREHOME2 GASKET SET		1-00-358110	1.736	11.000	1	Y	**	\$512.00
	COMB PKG CAP-TL2.0		2-00-358150B	0.162	1.300	24	Y	**	\$132.00
	OAK/TL3 BRICK AIR GSKT-4	Pkg of 4	3-44-2500202-4	0.014	1.000	4	2	**	\$25.00
	GASKET SET/3-40-358110PKG		3-44-358110	0.271	1.000	1	Y	**	\$94.00
6	OAK/TL3 SS BRICK CLIP SET	Pkg of 2	1-00-249153	0.014	1.000	2	Y	**	\$48.00
7	HANDLE ASY-OAK	Pkg of 2	1-00-00249	0.014	1.000	2	Y	**	\$25.00
8	OAK DAMPER HANDLE-SALES		3-50-00500S	0.014	1.000	1	Y	**	\$154.00
9	DMPR SHAFT BUSHING PLATES	Inner & Outer	1-00-856061	0.031	1.100	1	Y	**	\$132.00
10	DAMPER ROD WELDMNT-TL2.0		1-10-856011W	0.542	3.100	1	Y	**	\$215.00
11	SIDE SHIELD-LEFT-TL2.6		2-00-857019B	2.500	14.750	1	Y	**	\$263.00
12	INLET BRICK W/AIR PLATES		1-00-358112	1.111	25.000	1	Y	**	\$361.00
	BRICK AIR PLATE-SET OF 2	Set of 2	1-00-358118	0.014	0.200	2	Y	**	\$55.00
13A	TL2.6 CUT BRICK SET	4 pc set	1-00-857047	0.389	29.200	1	Y	**	\$187.00
13B	BRICK 12 X 6 X 1-1/4	Qty 2 req	3-40-86125	0.389	7.000	1	Y	**	\$17.00
14	ASH GRATE-TL2.6-SALES		2-00-857052B	0.162	6.150	1	Y	**	\$180.00
15	ANIRON WITH HDWR		1-00-856010	0.111	3.200	1	Y	**	\$170.00
16	TL3 DOOR ASY-SALES		1-10-06920A	1.667	28.000	1	42	**	\$1032.00
	68/TL3 BALL SPRNG BRKT-SA		2-00-06714	0.001	1.000	1	42	**	\$44.00
	TL3/SMS LOAD DOOR-SALES		4-00-06920P	0.924	21.000	1	42	**	\$503.00
	P68 AD LATCH ASY-SALES		1-00-249119	0.014	1.000	1	Y	**	\$84.00
	TL/DVC/WIN GLASS CLIP-4	Set of 4	2-00-05202-4	0.014	1.000	4	Y	**	\$37.00
	SCREW-BHSCS 10-24 X 3/8	Pkg of 100	3-30-3021-100	0.014	1.000	100	42	**	\$16.00
	1/4 RD BLACK PSA-15 FT	15 Ft	1-00-2312	0.031	1.000	1	Y	**	\$63.00
	12.4X16.6 IR PATTRN GLASS		3-40-06932	0.741	4.000	1	N	**	**
	TL3 LOAD DOOR LATCH HDWR		1-00-06903	0.014	1.000	1	42	**	\$44.00
17	ASH DOOR ASY-TL2.0-SALES		1-10-856005A	0.924	12.150	1	42	**	\$503.00
	ASH DOOR LATCH	Pre 008851329	SRV3-00-249149	0.031	0.122	1	21	**	\$22.00
	ASH DOOR LATCH W/KNOB	Post 008851329	1-00-249149	0.031	1.000	1	Y	**	\$37.00
	5/8 RD WHITE LD-5 FT	5 Ft	1-00-10000	0.104	1.000	1	51	**	\$18.00
	ASH DOOR HINGE-TL2/6-SALE		1-00-856020	0.031	0.300	1	42	**	\$119.00
	TL3 ASH DOOR LATCH HDWR		1-00-06902	0.014	1.000	1	42	**	\$20.00

18	AIRSLIDE ROD BRACKET		1-00-856008	0.031	0.250	1	Y	**	\$180.00
19	AIR CONTROL-TL2.0-SALES		1-10-856004W	0.104	0.400	1	Y	**	\$98.00
20	AIRSLIDE ASY-TL2.0-SALES		1-10-856003W	0.031	0.700	1	Y	**	\$81.00
21	TL2.6 ASH PAN-(PEDESTAL)		1-10-857002A	1.736	8.200	1	Y	**	\$325.00
22	OAK/TL3 SHOE-RAMP BRICK		3-40-00100	0.389	9.000	1	Y	**	\$191.00
	TL300 SHOE BRICK GASKET		3-44-06951	0.125	1.000	1	Y	**	\$17.00
23	BRICK INSUL-11.875X10.938	Qty 2 req	3-40-857054	0.444	3.000	1	Y	**	\$45.00
24	SIDE SHIELD-RIGHT-TL2.6		2-00-857021B	2.500	14.750	1	Y	**	\$314.00
25	HEAT SHLD MNTG PLATE-2.0		2-00-856026B	1.944	9.200	1	42	**	\$268.00
26	REAR HEAT SHIELD-TL2.6		1-00-857024	4.167	19.500	1	Y	**	\$378.00
	TL2.0 BLOWER BLOCKOFF PLT		1-00-856019	0.556	1.950	1	42	**	\$126.00
	TL3 SIDE BRICK BKT	Set of 2	1-00-06945	0.014	1.000	2	Y	**	\$62.00
	CAST DOOR HINGE WITH PIN	Qty 2 req	3-00-773813	0.063	1.000	1	21	**	\$18.00
	BLOWER CONV 150 CFM		7000-537	0.125	3.300	1	21	**	\$202.00
	REAR FLUE RETROFIT-TL2.6	Pre SN #008850219	1-10-857038W†	0.296	5.800	1	N	**	\$353.00
	TL2.6 FLUE COLLAR WELDMNT	Post SN #008850219	1-10-857001W	0.296	5.800	1	Y	**	\$275.00
	FLUE OPENING COVER		1-00-857023	0.296	3.000	1	42	**	\$90.00
	WIN POWER CORD W/VSC		3-20-06652	0.125	1.000	1	Y	**	\$130.00
	D/BVG/GIN/FLX SNAPDISC		3-20-408412	0.063	1.000	1	Y	**	\$56.00
	Top vent cover (needed if converted to rear flue)		1-10-857014	0.296	3.600	1	42	**	\$180.00
	BLACK 12OZ AEROSOL SPRAY	Pre SN #00850474	3-42-1990	0.222	1.000	1	21	**	\$30.00
	BLACK 12OZ SPRAY-258H	Post SN #00850474	3-42-19905	0.111	1.000	1	21	**	\$20.00
	TL300 ASHLIP TRIM-BRUSH S		3-43-4722386-7	0.542	2.000	1	21	**	\$77.00
	TL DOOR TRIM-BRSH SS		3-43-856015-7	0.350	3.000	1	21	**	\$269.00
	12 X 6 TILE FRAME-BRSH SS		3-43-06729-7	0.162	1.000	1	21	**	\$107.00
	SPRING CLIP-20 PACK		3-31-232547-20	0.014	1.000	20	21	**	\$28.00
	BULK100-SSSCP 10-24 X 1/4		3-30-2006-100	0.031	1.000	100	Y	**	\$46.00
	NUT-10-24 ACORN NUT		3-30-8014-50	0.031	1.000	50	Y	**	\$45.00
	5/16X1/2 BALL PLUNGER-3PK		3-31-5500-3	0.014	1.000	3	21	**	\$21.00
	SCREW 1/4-20 X 3/8 PKG-50		3-30-2000-50	0.031	1.000	50	Y	**	\$35.00
	BULK50-FLNG 1/4-20 X 1/2		3-30-2001-50	0.031	1.000	50	Y	**	\$38.00
	SCREW 1/4-20X1-1/2 PKG-25		3-30-1119-25	0.031	1.000	25	Y	**	\$36.00
	BULK50-HCS1/4-20 X 1/2 G8		3-30-1109-50	0.031	1.000	50	Y	**	\$35.00
	BULK50-HCS 1/4-20X3/4 G8		3-30-1113-50	0.031	1.000	50	Y	**	\$43.00
	BULK100-HCS1/4-20 X 5/8		3-30-1110-100	0.031	1.000	100	Y	**	\$45.00
	BULK50-HCS 5/16-18 X 1/2		3-30-1122-50	0.031	1.000	50	Y	**	\$38.00
	BULK25-HCS 1/4-20 X 3/8		3-30-1106-25	0.031	1.000	25	Y	**	\$36.00
	SCREW 5/16-18X3/4 PKG-50		3-30-1126-50	0.031	1.000	50	Y	**	\$45.00
	BULK15-5/16 X 1-3/4 DOWEL		3-30-2005-15	0.031	1.000	15	Y	**	\$46.00
	BULK100-TOPLOCK NUT 10-32		3-30-8019-100	0.031	1.000	100	Y	**	\$43.00
	BULK25-RPHMS 1/4-20X2-1/2		3-30-6007-25	0.031	1.000	25	Y	**	\$30.00
	BULK100-RPHMS 10-32 X 3/8		3-30-6005-100	0.031	1.000	100	Y	**	\$19.00
	BULK100-CNTRLCKNUT 1/4-20		3-30-8020-100	0.031	1.000	100	Y	**	\$20.00
	BULK100-FHN 5/16-18 Z 5		3-30-8005-100	0.031	1.000	100	Y	**	\$22.00

	BULK100-FHN 1/4-20 Z 5		3-30-8004-100	0.014	1.000	100	Y	**	\$10.00
	BULK50-REV LOCKNUT 1/4-20		3-30-8021-50	0.031	1.000	50	Y	**	\$36.00
	Bulk100-close end pop rvt		3-30-7900-100	0.031	1.000	100	Y	**	\$17.00
	BULK100-BHSCS 10-24 X 3/8	No longer available	3-30-3011-100†	0.000	1.000	100	N	**	**
	BULK25-SSSCP5/16-18 X 3/8		3-30-2004-25	0.014	1.000	25	Y	**	\$34.00
	BULK100-HWHTCS10-24 X 1/2		3-30-1101-100	0.031	1.000	100	Y	**	\$32.00
	BULK50-HWHTCS1/4-20 X 5/8		3-30-1111-50	0.031	1.000	50	Y	**	\$35.00
	BULK100-BHSCS1/4-20 X 3/8		3-30-3014-100	0.014	1.000	100	Y	**	\$37.00
	BULK50-SAE FW 5/16X11/16		3-30-0205-50	0.014	1.000	50	Y	**	\$17.00

** Pricing not available because of one of the following: Not able to calculate - please contact person who sets pricing for your company, part not available to order or distributor needs to provide your pricing directly to you.

†Denotes discontinued product.

Mountain View Hearth Products
manuals.stove-parts-unlimited.com