

IMPORTANT SAFETY INSTRUCTIONS

VITA[®]
VSPA

LX SERIES
L30, L60, L80

OWNER'S MANUAL

TABLE OF CONTENTS

GENERAL INFORMATION

Owner's Record	3
Important Safety Instructions	4
Do's and Don'ts	5

INSTALLATION INSTRUCTIONS

Site Selection	6
Electrical Requirements and Installation	6

OPERATION INSTRUCTIONS

Filling Your Spa.....	7
Getting Started	7
Setting Time	7
Starting Filter	7
Starting Heater.....	7
Adjusting Settings	7
Changing Temperatures	7
Changing Filter Hours.....	7-8
Changing Heater Days	8
Using Your Spa	8
Starting Jet 1	8
Starting jet 2	8
Starting Blower	8
Turning on Light	8
Special Features.....	8
Automatic Blower and Purge	8
Freeze Protection	8
Ozone Generator Monitor	8
Panel Lockout.....	8
Overheat Protection.....	8
Start-up Chemicals	9
Jet Operations.....	9-10

SPA MAINTENANCE

Draining Your Spa	10
Winterizing Your Spa	10
Filter Maintenance	10
Redwood Cabinet Maintenance	10
Marine Vinyl Cover	11

WATER QUALITY AND MAINTENANCE

Sanitizing	11
pH Control	11

TROUBLESHOOTING GUIDE12

ATTACHMENTS

Wiring Diagram
VitaZone

This Owner's Manual has been designed to familiarize you with your Vita Spa operations and general maintenance. We suggest that you take some time to carefully review it. Please keep this manual available for reference.

If you have any questions regarding your Vita Spa set-up, operation, or maintenance, contact your Authorized Vita Spa Dealer.

<p style="text-align: center;">OWNER'S RECORD</p> <p>DATE PURCHASED: _____</p> <p>DATE INSTALLED: _____</p> <p>DEALER: _____</p> <p>ADDRESS: _____</p> <p>_____</p> <p>_____</p> <p>TELEPHONE: _____</p> <p>SERIAL #: _____</p>
--

To contact our Customer Service Department, please call 1-800-VITA-SPA, or 1-305-685-5739, during normal business hours, Monday through Friday, 8am to 5pm, E.S.T.

The Serial Number is located within the equipment compartment. Please verify that the serial number is noted on your dealer's purchase contract .

IMPORTANT SAFETY INSTRUCTIONS

WHEN INSTALLING AND USING THIS ELECTRICAL EQUIPMENT, BASIC SAFETY PRECAUTIONS SHOULD ALWAYS BE FOLLOWED, INCLUDING THE FOLLOWING:

READ AND FOLLOW INSTRUCTIONS.

1. WARNING - To reduce the risk of injury, do not permit children to use this product unless they are closely supervised at all times.

2. DANGER • RISK OF ACCIDENTAL DROWNING. Extreme caution must be exercised to prevent unauthorized access by children. To avoid accidents, ensure that children cannot use a hot tub or spa unless they are supervised at all times.

3. A ground terminal (pressure wire connector) is provided on the control box inside the unit to permit connection of a minimum No. 8 AWG (8.4 mm²) solid Copper bonding conductor between this point and any metal equipment, metal water pipe, metal enclosures of electrical equipment, or conduit within five feet (1.5 m) of the unit.

4. DANGER - To reduce the risk of injury to persons, DO NOT remove suction fittings. The suction fittings in this spa are sized to match the specific water flow created by the pump. Should the need arise to replace the suction fittings or the pump, be sure that the flow rates are compatible. Never operate the spa if the suction fittings are broken or missing. Never replace a suction fitting with one rated less than the flow rate marked on the original suction fitting.

5. Install the spa so proper drainage is provided for the compartment containing the electrical components.

6. DANGER - RISK OF ELECTRICAL SHOCK. Install at least 5 feet (1.5 m) from all metal surfaces. (A spa may be installed within 5 feet of a

metal surface if each metal surface is permanently connected by a minimum No. 8 AWG (8.42mm²) solid copper conductor attached to the wire connector on the terminal box that is provided for this purpose). National Electrical Code ANSI/NMFP A70-1993.

7. DANGER • RISK OF ELECTRICAL SHOCK.

Do not permit any electrical appliances, such as a light, telephone, radio, or television within 5 feet (1.5 m) of the spa.

8. WARNING • TO REDUCE THE RISK OF INJURY:

A. The water in a spa should never exceed 40 degrees Celsius (104 degrees F). Water temperatures between 38 degrees C (100 F) and 40 degrees C (104 F) are considered safe for a healthy adult. Lower water temperatures are recommended for extended use (exceeding 10 minutes) and for young children.

B. Since excessive water temperatures have a high potential for causing fetal damage during the early months of pregnancy, pregnant or possibly pregnant women should limit spa or hot tub temperatures to 38 degrees C (100 F).

C. Before entering a spa, the user should measure the water temperature with an accurate thermometer, since the tolerances of water temperature regulating devices vary.

D. The use of alcohol, drugs or medication, before or during spa use, may lead to unconsciousness with the possibility of drowning.

E. Persons suffering from obesity or with a medical history of heart disease, low or high blood pressure, circulation system problems, or diabetes should consult a physician before using a spa.

F. Persons using medication should consult a physician before using a spa since some medication may induce drowsiness, while other medication may affect heart rate, blood pressure and circulation.

DO'S AND DON'TS

Make sure the spa is connected to a Ground Fault Interrupter (GFCI) protected circuit. This GFCI is required by the National Electrical Code (NEC) and must be installed by a licensed electrician. Test GFCI monthly.

Test the water with your hand before entering the spa to be sure it is comfortable.

Remember that wet surfaces can be slippery. Take care when entering and exiting the spa.

DO

Use the thermal cover when the spa is not in use, empty or full.

Take steps to prevent the intrusion of sand and dirt into the spa.

Maintain proper water chemistry.

Clean the filter cartridge weekly.

DON'T

Use the spa for long periods of time at temperatures over 104 F.

DON'T

Operate spa without water. Turn circuit breaker off before emptying the spa and while it is empty.

DON'T

Store chemicals in the spa's equipment compartment.

DON'T

Open the electrical box. There are no user serviceable parts inside.

DON'T

Operate the pump(s) on hi-speed for extended periods of time with the cover on. Extended hi-speed pump operation will cause a slow heat build-up due to water friction, which could trip the spa's hi-limit thermostat.

WARNINGS

Prolonged immersion in water that is warmer than normal body temperature can result in a dangerous condition known as HYPOTHERMIA. The causes, symptoms, and effects of hypothermia may be described as follows: Hypothermia occurs when the internal temperature of the body reaches a level several degrees above the normal body temperature of 98.6 degrees F. The symptoms of hypothermia include dizziness, fainting, drowsiness, lethargy, and an increase in the internal temperature of the body. The effects of hypothermia include (1) unawareness of impending hazard, (2) failure to perceive heat, (3) failure to recognize the need to exit the spa, (4) physical inability to exit the spa, (5) fetal damage in pregnant women, and (6) unconsciousness resulting in a danger of drowning.

WARNING - The use of alcohol, drugs, or medication can greatly increase the risk of fatal hypothermia in hot tubs and spas.

Persons taking medications which induce drowsiness such as tranquilizers, antihistamines or anti-coagulants should not use the spa. Pregnant women and persons with a medical history of heart disease, circulatory problems, diabetes or high blood pressure should consult their physician before using the spa.

Children are especially sensitive to hot water. At no time should children have unsupervised access to the spa. The use of elevated decking may encourage children to climb onto the thermal cover — **IT IS NOT DESIGNED AS A SAFETY OR CHILD RESISTANT COVER!**

Every Vita Spa comes with a thermal cover which is provided with locking straps. **INSTALL** the locks for your child's safety.

SAVE THESE INSTRUCTIONS.

INSTALLATION INSTRUCTIONS

SITE SELECTION/PREPARATION:

The spa must be installed on a structurally strong, solid and reasonably level surface. The site should allow for drainage away from the equipment compartment in which the electrical components are housed. Take into account the following when considering prospective sites. Refer to spa equipment/cabinet access addendum.

LOCAL CODES:

There may be certain restrictions and/or requirements that are particular to your locality.

DELIVERY PASSAGEWAY:

Doors, halls, stairs, etc. may pose obstructions to deliver the spa to its intended site.

MAINTENANCE:

Trees, lawn, placement surfaces, etc. can create extra work in keeping your spa and spa area clean and safe.

PRIVACY AND WIND SHIELDING:

A sheltered environment can result in lower operating and maintenance costs.

Your VITA SPA dealer is your best resource to answer any questions or provide suggestions for your spa installation.

ELECTRICAL REQUIREMENTS AND INSTALLATION

IMPORTANT: All electrical wiring to the spa must meet the requirements of the National Electrical Code (NEC) and any applicable state or local codes. The electrical circuit must be installed

6 by a qualified, LICENSED electrical contractor

and approved by a local building/electrical inspection authority.

1) The spa must be permanently connected (hard-wired) to the power supply. No extension cords or plug-type connections are to be used in conjunction with the operation of the spa. Failure to supply power to the spa which is not in accordance with these instructions could create a potential health hazard and will void both the manufacturer's warranty and the independent testing agency listing.

2) The National Electrical Code (NEC) requires that the power supply to this spa must be a dedicated, ground fault circuit (GFCI) protected circuit with no other appliances or lights sharing power off this circuit.

3) Refer to the wiring diagram to determine the current, voltage and wire size requirements for this spa.

THHN type wire is recommended.

Wire size for the distance of the wire run must conform to NEC and local electrical codes.

Use copper conductor only to ensure proper connections. **DO NOT USE ALUMINUM WIRE.**

4) To obtain access to the spa's power terminal strip, remove equipment access door and remove the control box cover.

5) Feed supply conductors through power supply inlets provided on spa and install into control box.

6) Connect wires to terminal block (TBI) color for color. All wires must be connected or damage may result. **TIGHTEN SECURELY!**

7) A separate #8 (.4mm²) solid copper ground wire should be connected between the spa grounding lug and a recognized grounding rod that is fully driven into the ground. **NOTE:** Do not turn power on to the spa until the start-up instructions have been followed.

OPERATION INSTRUCTIONS

NOTE: For best results, read each step carefully and entirely before proceeding to the next.

1) FILL YOUR SPA

Wipe the interior of the spa with a damp, soft cloth to remove any residue that may be on the surface. Fill with a garden hose. As the spa is filling, check in the equipment access area for any leaks. *On occasion, it may be necessary to hand tighten a union fitting that may have come loose during transit. Also check that the gate valves are pulled out to the open position and that the hose bib is closed. Continue to fill to the water level line.*

NOTE: If your water is extremely hard, it is preferable to fill the spa halfway with hard water and the rest with softened water. Never fill the spa entirely with softened water.

2) GETTING STARTED

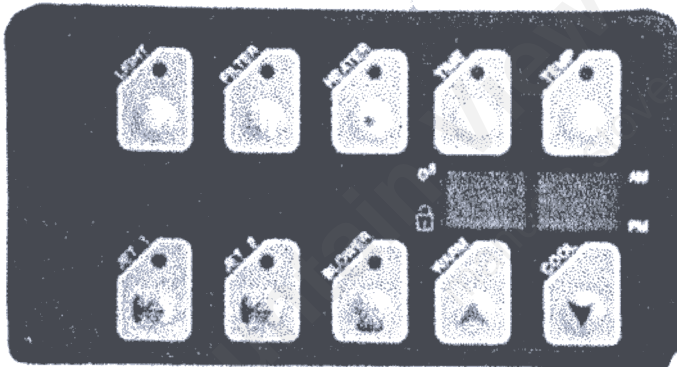


Illustration 1

A. Setting Timer

Touch TIME switch once to display time, then touch switch again to enter the time set mode. (Note that the light is flashing over the TIME switch and the display is showing the day number). Use UP and DOWN switches to set present day of week (Sunday is considered day number 1). Touch TIME switch again to show the hour, then use UP and DOWN switches to set the current hour. Be careful to observe the AM/PM indicator in the display window. Touch TIME switch once again to show and set the current minute. The display will automatically return to normal and the light will stop flashing after 20 seconds, or

when the next switch is touched.

B. Starting Filters

Touch and hold the FILTER switch for 5 seconds. The FILTER light will then come on and the display will show "F=6H", meaning that the filter will run for 6 hours, clearing up your tap water. Afterwards, the filter hours will be 7am to 9am and 4pm to 6pm each day unless you reset the filter hours for your particular needs. If you wish to stop the filter in less than 6 hours, hold the FILTER switch again for 5 seconds or until the display shows "F=0". The filter will continue to run, however, if the heater is still on.

C. Starting Heater

After the filter has run for 15 seconds, the heater will come on and heat the water until it reaches a temperature of 102 degrees. If this takes longer than 6 hours, the filter will continue running. (Whenever the water reaches the set temperature and heater turns off, the filter will run one extra minute to cool the heater element.)

NOTE: If water has not reached the set temperature level after a filtration cycle, or after you have used the spa, the filter and heater will stay automatically on until the set temperature has been reached.

3) ADJUSTING SETTINGS

A. Changing Temperatures

Your spa has been preset to heat the water to 102 degrees each time the filter runs. Touch the TEMP switch once to display the actual water temperature; touch again to display the set temperature. While the light is flashing, you may decrease or increase (up to 104) degrees) the set temperature by using the UP and DOWN switches. If the heater is on and you wish to turn it off, simply reduce the set temperature below the actual temperature.

B. Changing Filter Hours

Touch the FILTER switch once to enter the filter hour set mode. While the FILTER light is flashing, use the UP and DOWN switches to review each hour of the day. If an "F" is displayed beside the hour, the filter will run during that hour each day. Use repeated touches of the FILTER switch to add or remove the "F" beside each hour. If the filter is running

because the current hour has an "F" in the display, you may turn off the filter by removing the "F". The filter will continue to run, however, if the heater is on.

C. Changing Heater Days

Your spa has been preset to heat the water to the set temperature every day of the week. If you wish to eliminate heating on one or more days, touch the HEATER switch once to enter the heater set mode. While the HEATER light is flashing, review each day of the week by touching the UP or DOWN switches. If a particular day is set for heating, an "H" will be displayed beside the day number. You can remove (or add back) the "H" by touching the HEATER switch again. If you wish to stop the heater before the set temperature is reached, simply remove the "H" from the current day.

4) USING THE SPA

A. Starting Jet 1

You can activate the first set of jets by touching the JET 1 switch at any time. You might notice that the FILTER light goes off whenever the JET 1 light comes on. This is because the filter function and the first set of jets share a common motor. Touch the JET 1 switch again to stop the jets and return to normal filtering, or wait 30 minutes and the jets will automatically turn themselves off.

B. Starting Jet 2

The second set of jets is independent of any other function and can be turned on and off at any time by touching the JET 2 switch. These jets will also turn themselves off after 30 minutes of use.

C. Starting Blower

Your spa is equipped with a 2-speed air blower. The first touch of the BLOWER switch starts the blower at its highest speed; a second touch reduces the blower to low speed. Touch again to turn the blower off. The blower will automatically stop after 30 minutes of use.

D. Turning on Light

Your spa also has an underwater light with two levels of brightness. The first touch of the LIGHT switch turns the light on at full brightness; a second touch reduces the light to half brightness; and a third touch turns the light off. If left on, the light will automatically turn

itself off after 6 hours.

NOTE: While heating the spa, or when the spa is not being used, keep the air controls closed.

5) SPECIAL FEATURES

A. Automatic Blower/Purge & Jets Pump

Twice each day, the blower will automatically run for 1 minute, 10am and 8pm, to circulate potential stale water in the water lines. This is a normal function of the spa.

B. Freeze Protection

If the TEMPERATURE IN THE PLUMBING of the spa approaches 40 degrees, the filter and jet pumps will automatically come on and run for at least one minute. If this doesn't raise the temperature enough, the heater will come on and raise the water temperature about 10 degrees.

C. Ozone Generator Monitor

If your spa is equipped with an ozone generator, the actual ultraviolet light from the generator will cause the OZONE light on the display to glow, indicating proper operation of the generator. (DEALER INSTALLED OPTION).

D. Panel Lockout

If you wish to make the SELECTRON panel child proof, you can deactivate all touch switches by slowly depressing the UP switch, the DOWN switch, and the UP switch again in exact order. If you do the sequence successfully, the LOCK light on the display will begin flashing and no more switch inputs will be accepted. You may unlock the panel by repeating the exact sequence of UP/DOWN/UP.

E. Overheat Protection

If a possibility of overheating is detected, the display will show HILI (high limit) and the heater will be disabled. After the water temperature cools below 104 degrees, you may reset the heater function by holding the HEATER switch for 5 seconds, or until the display returns to normal. If the HILI message returns, you should call for service.

F. Flipping Display Window

Hold DOWN button for 5 seconds. The display will now be able to be read from inside the spa. To change back, hold DOWN button for 5 seconds again.

8 off. If left on, the light will automatically turn

6) ADD START UP CHEMICALS

Carefully follow the directions and add the start-up chemicals recommended to you by your dealer. Contact your dealer to clarify any questions you may have.

7) JET OPERATION

Your Vita Spa is designed with a unique jet system to allow you to select a wide variety of massage patterns. The following is a description of the various types of jets and their operation you may use to tailor your spa to your specific massage needs.

THREE-WAY POWER DIVERTER VALVE



Illustration 2

This feature is only available on spas equipped with the L60 or L80 series equipment (Romance, Elan, Allure and Essence). This valve is functional when the primary,

two speed pump is operating. Water may be diverted to two individual sections of jets or a combined operation of both sections. By turning the valve to the left, water will be diverted to section "A" jets giving them the maximum output. Rotating the valve completely to the right will give section "B" the maximum output and when its turned to the center position, both "A" and "B" sections will operate simultaneously. (See specific spa spec sheet insert for details on how to use 3-Way Diverter).

DIRECTIONAL & ROTATIONAL MASSAGE JETS

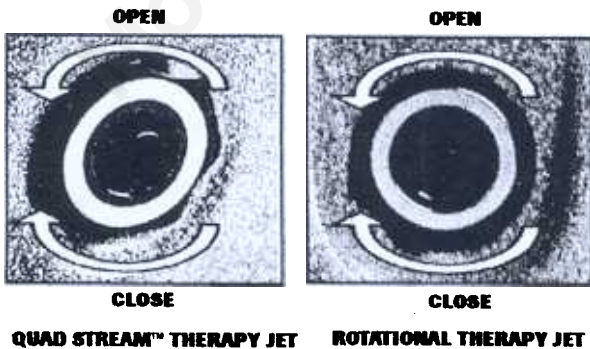


Illustration 3

When the pump is on and the turbo massage jet is in the off position, the directional & rota-

tional massage jets will be operational. The water flow direction is adjustable by rotating the directional jet nozzle. The amount of pressure can be adjusted by rotating the outer rim of the jet(s): clockwise for minimum pressure and counter clockwise for maximum pressure. Pressure may also be varied by the use of the air control.

EURO MASSAGE JET



Illustration 4

These Euro jets are used in various models for various purposes. In cluster configuration for back and neck massage, they deliver a firm pinpoint jet stream of massaging action. The Euro jet is not directional, but can be pressure controlled by rotating jet face, or adjusting the air control.

AIR CONTROLS

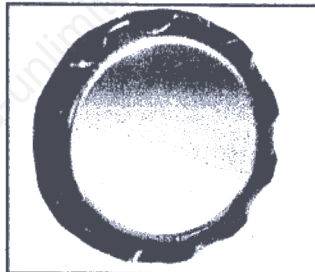


Illustration 5

(close) jet pressure as desired.

The air controls are used to introduce air into the water jet stream. Marked with arrows for open or closed position, these controls allow the user to increase (open) jet pressure or decrease

FOUR WAY TURBO MASSAGE DIVERTER JET

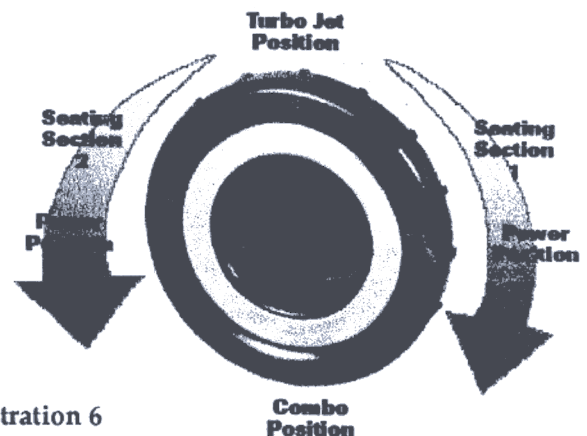


Illustration 6

This jet is operational when the auxiliary pump is on (for spas with 2 pumps), or whenever the pump is activated (single

pump systems). Water is diverted to various jet regions by rotating the outer rim to assorted clock positions. When the jet is turned to the three o'clock position, sector "A" jets will operate. At nine o'clock, sector "B" jets will function. At six o'clock, both "A" and "B" sectors will perform simultaneously. And at the twelve o'clock, the water is routed through the turbo massage jet itself. (See specific spa spec sheet insert for details on how to use the 4-Way Turbo Diverter).



Illustration 7

FINGER MASSAGE JETS

Located at various points in the spa. Creates a "finger massage" action when blower is turned on.

SPA MAINTENANCE

Your VITA SPA is manufactured with the highest quality and most durable materials available. A spa care and maintenance program is recommended to increase your comfort, maintain the spa's reliability and protect your investment.

1. DRAINING YOUR SPA

Detergent residues from bathing suits as well as soap film from your body may gradually accumulate in the water. Foam inhibitors will suppress the foam but will not remove the soap from the water. Eventually, the soap build-up in the water will concentrate enough to leave an unclean feeling on the user's skin, cause sudsing and make the water impossible to clarify. Depending on the amount of soap input, the spa water should last between two and three months.

To drain your Spa:

- A. Turn the power off at the GFCI breaker.
- B. Attach a garden hose to the yellow hose bib located under the filter housing inside the equipment area and route the outlet of the hose to an appropriate draining area. The spa will empty by gravity. Siphon or scoop out the balance of the water.

IMPORTANT: Spa water with a high sanitizer level may harm plants and grass.

If you are draining your spa for the winter, be sure to fully drain water from the pipe by disconnecting the two unions at the gate valves.

- 10 Drain the water pump by removing the pump plug. Then reinstall the valves and pump plug.

- C. Remove the filter and clean as required.
- D. Inspect the spa shell and clean as required.
- E. Refill the spa BEFORE restoring power to it.

2. WINTERIZING YOUR SPA

Your VITA SPA has been designed and engineered for year-round use in any climate.

- A. If the spa will not be used, drain it completely following the instructions on "DRAINING THE SPA."
- B. If you intend to use the spa during the winter, keep the spa warm and set the timer to bring the pump on at night and a couple hours during the day. Note that accidental freezing could result due to prolonged power failures. (For winter temperature, some prefer to operate spa in low speed full time. This will not damage the spa, and it is very economical.

3. FILTER MAINTENANCE

Vita Spas are designed with the most efficient top loading filtration system in the industry. Filter maintenance is the most critical factor in keeping your spa water clean.

To clean the filter:

(NOTE: Never run spa without filter)

- A. Remove the cartridge and spray it with a garden hose. It will be necessary to rotate the cartridge while spraying so as to thoroughly remove the debris lodged between the filter pleats.
- B. After allowing to dry, inspect the cartridge for calcium deposit (scaling) or an oil film. Rapid mineral build-up from hard water, or oil build-up from the use of oil-based water scent or body oil may coat the filter cartridge. A filter cleaner to soak the cartridge is available from your VITA SPA dealer and should be used as part of your spa maintenance.
- C. Use a rag to remove any debris at the bottom of the filter housing. Replace the cartridge.
- D. We recommend the use of a spare filter. This way one can be soaking and cleaning while you continue to enjoy the use of your spa.

4. REDWOOD CABINET MAINTENANCE

Your VITA SPA cabinet is made with a high quality redwood. It is factory stained and sealed. Depending on the location and exposure of the

spa to the rain and sun, it is recommended to seal the redwood cabinet once or twice a year with a wood sealant. Vita's specially formulated redwood sealer is available at your VITA SPA dealer.

5. MARINE VINYL COVER

Your cover is manufactured from a durable marine grade, U.V. resistant material. Even so, monthly cleaning and periodic conditioning is recommended to maintain its beauty. To clean and condition the vinyl cover:

- A. Lightly spray the cover with a garden hose to rinse it and remove the debris.
- B. Using a large sponge or soft cloth and a mild soap solution (1 teaspoon dish washing liquid with 2 gallons of water), scrub lightly in circular motion. Then rinse it thoroughly with plenty of water.
- C. Condition the vinyl after cleaning by applying a thin film of vinyl conditioner such as ArmorAll. NOTE: To remove tree saps, use lighter fluid (not charcoal lighter but the kind used in cigarette lighters). Use sparingly and rinse with mild soap solution afterwards. Wipe dry.

WATER QUALITY AND MAINTENANCE

GENERAL GUIDELINES FOR WATER QUALITY MAINTENANCE

Maintaining water quality within specific limits will enhance your enjoyment and prolong the life of the spa. Safe, comfortable and clean spa water is a fairly simple task to achieve, but it does require regular attention because of the numerous factors that can alter it. There is no one formula to be followed because of the variables, i.e. quality of the water used to fill the spa, water temperature, user load, etc. For specific guidelines for water quality maintenance, consult your VITA SPA dealer who can assist you to develop a program based on your specific needs. Disregard for water maintenance will result in poor soaking conditions, damage your spa investment and possibly void your warranty.

Spa water maintenance consists of three separate, easily developed programs:

1. Sanitizing and maintaining a safe level of sanitizer in the spa water.
2. Balancing the pH and maintaining the recommended mineral content level.
3. Achieving and maintaining water clarity.

SANITIZING

To destroy bacteria and organic compounds in the spa water, a sanitizer must be used regularly. The use of a bromine floater is recommended. By regulating the amount of tablets, the amount the floater is open and the length of the filtration cycles, you can control the amount of bromine in your spa. A bromine residual of 2 to 3 ppm is generally considered desirable. A two-part bromine system or granular chlorine (dichlor) are also acceptable sanitizers.

pH CONTROL

pH is a measure of acidity and alkalinity of the spa water. The recommended pH for spa water is 7.4 to 7.6 ppm. Below 7.0 (considered neutral), the spa water is acidic and can cause damage to the heating system. Above 7.8 the water is too alkaline and can result in cloudy water and scale formation on the spa shell, heater and cover.

IMPORTANT: NEVER USE CHLORINE TABLETS (TRICHLOR) IN YOUR SPA.

This chemical can have an extremely corrosive effect on certain materials in the spa. Also, the use of liquids, chlorine or acid, are not recommended. Damage caused by use of these chemicals, or improper use of any chemical, is not covered under the spa warranty.

OPTIONAL VITAZONE WATER PURIFICATION SYSTEM

If you have elected to equip your spa with the optional VITAZONE ozone water purification system, you will find that your water stays fresh and clean with significantly less usage of chemical sanitizer and you will also be able to go longer between spa draining. Read and follow the instructions included with your VITAZONE ozone water purification system to determine how to adjust your chemical usage and filter cycles.

"L" SERIES TROUBLESHOOTING GUIDE

SYMPTOM	PROBABLE CAUSE	SOLUTION
Spa inoperative	Power Failure outside of Spa	Check power source Breaker and GFCI; Reset breaker/GFCI. Call Electrician if it will not reset.
	Spa side locked	Lockout light is flashing. Unlock.
Display: HILI	Overheat	Let water temperature cool down to 104F and reset by holding HEATER switch for 5 seconds, or until display returns to normal. If HILI message returns, call for service.
Display: BJ2P	Blower/Pump Purge	Normal if this occurs twice daily. If not, reset system by turning power to the spa off, and back on.
Display: SS=0; SS=S; LS=0; LS=S	Multiple	Call for Service.
Water not hot	Improper setting	Set heater to desired setting and start the filter by holding FILTER switch down for 5 seconds to start a 6-hour period.
	Not a heat day	Check heat day to make sure today is a heat day.

If these two solutions do not solve the problem, call for service.

NOTE: Extreme electrical noise problems such as power surges or nearby electrical storms could disturb the Selectron's internal computer in the same way as your home computer. If you suspect a problem with the computer because of a strange display or a performance that is not normal, before calling for service, disconnect the spa by turning off your breaker. Turn the power back on and the Selectron will automatically clear its memory and return to its original factory settings. This is similar to pushing the "reset" button on your home computer.

VITA INTERNATIONAL
2320 NW 147th Street
Miami, Florida 33054