

*ASHLEY*



# ***SERVICE GUIDE***

Parts Removal  
And Installation  
**C92/KTC**

C92/KTC

## PARTS REMOVAL AND INSTALLATION

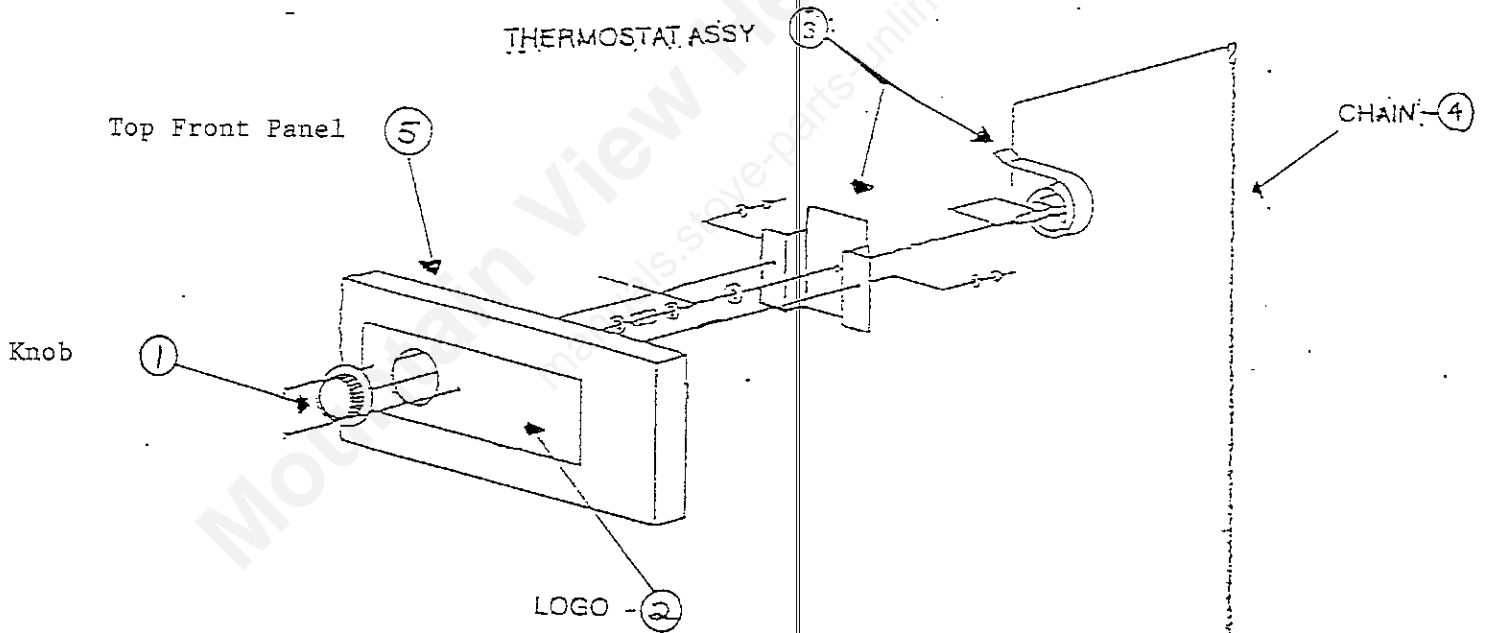
### Outer cabinet assembly: Removal

1. Remove thermostat knob located on front of unit.
  2. Remove eight hex nuts from bottom of cabinet assembly.  
(4 at front and 4 at back panels)
  3. Remove three screws from the thermostat panel cover located to the left of the cast iron feed door.
- NOTE: While removing thermostat panel cover, gradually twist the panel to the left and slide to the right (KTC does not have thermostat panel cover).
4. Remove four flat-head bolts from the tie bars located under top cabinet assembly.
  5. Remove wooden knob from bypass lever located at back of unit.
  6. Remove chain from manifold assembly located at bottom of inner unit. (access to chain from behind thermostat panel)
  7. Lift outer cabinet assembly and remove from inner unit assembly.

REVERSE STEPS TO INSTALL

Thermostat assembly: Removal

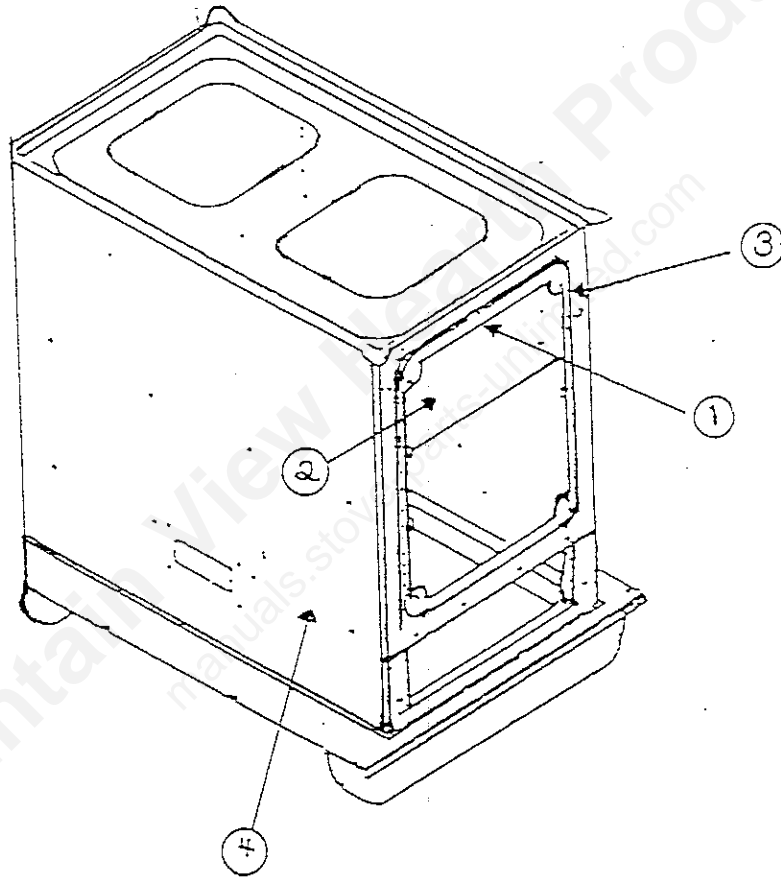
1. Lift top cabinet assembly (not shown in diagram).
  2. Remove knob (1) from thermostat assembly (3).
  3. Remove Ashley logo (2).
- NOTE: Tabs will be bent over on the logo on inside of unit.
4. Remove chain (4) from thermostat assembly (3).
  5. Remove two flat-head bolts holding thermostat assembly to top front panel (5).
- REVERSE STEPS TO INSTALL



C92/KTC

Smoke curtain & rod kit: Removal

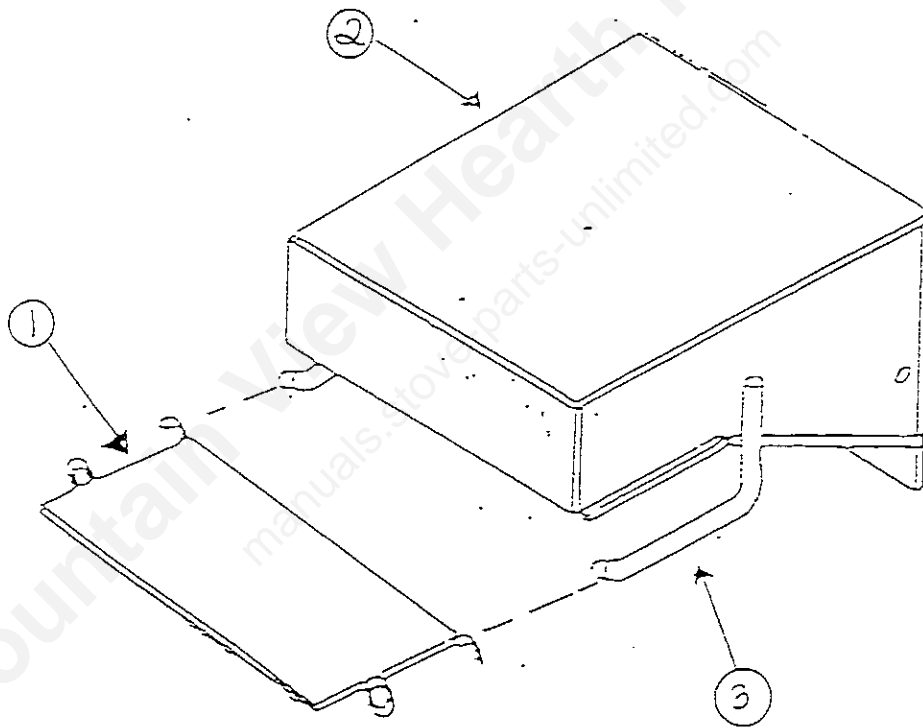
1. Bend rod (1) downward until ends clear feed door frame (3).
  2. Remove smoke curtain (2) from inner unit assembly (4).
- REVERSE STEPS TO INSTALL



C92/KTC

Flame shield: Removal

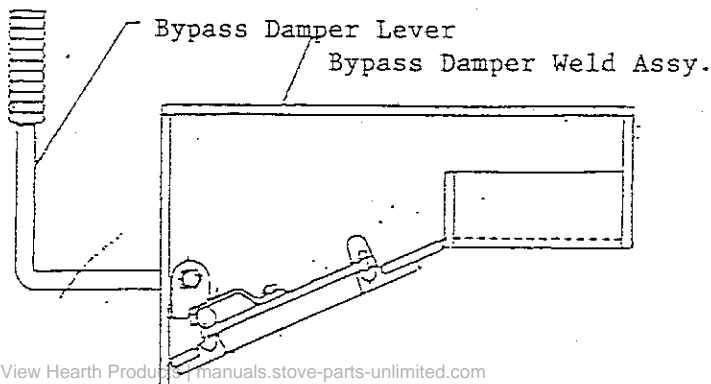
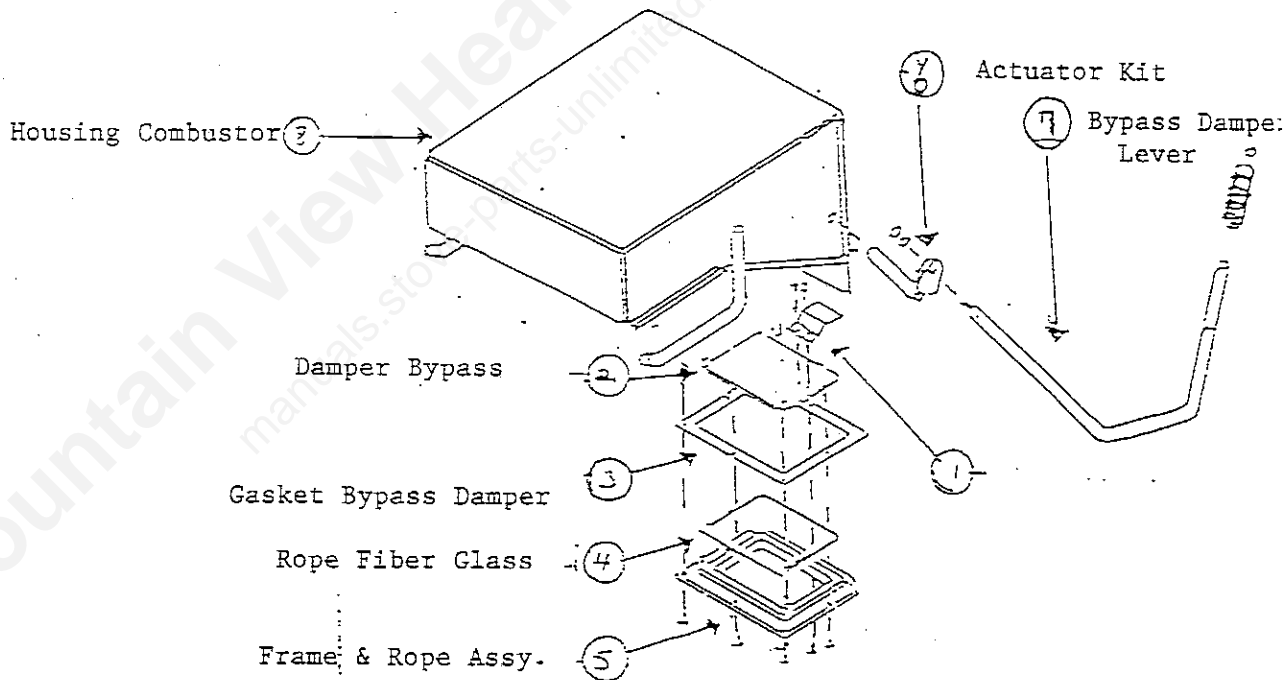
1. Lift up on flame shield (1) and maneuver toward front of unit until solid rings have cleared rod supports (3).
  2. Maneuver flame shield toward the feed door until it is removed from housing (2).
- REVERSE STEPS TO INSTALL



C92/KTC

Bypass damper & rod assembly: Removal

1. Remove outer cabinet assembly (see cabinet assembly).
  2. Remove two hex head bolts from left bypass damper (1) (access through flue collar).
  3. Remove two 9/16" nuts holding the actuator kit (6) to bypass lever (7).
  4. Slide the bypass lever (7) out freely.
  5. Remove six hex head bolts from the frame and rope assembly (5).
  6. Drop bypass assembly down from the combustor housing (8).
- NOTE: Bypass damper assembly is composed of key numbers 1 - 5.



Bypass Damper Assy. Closed Position

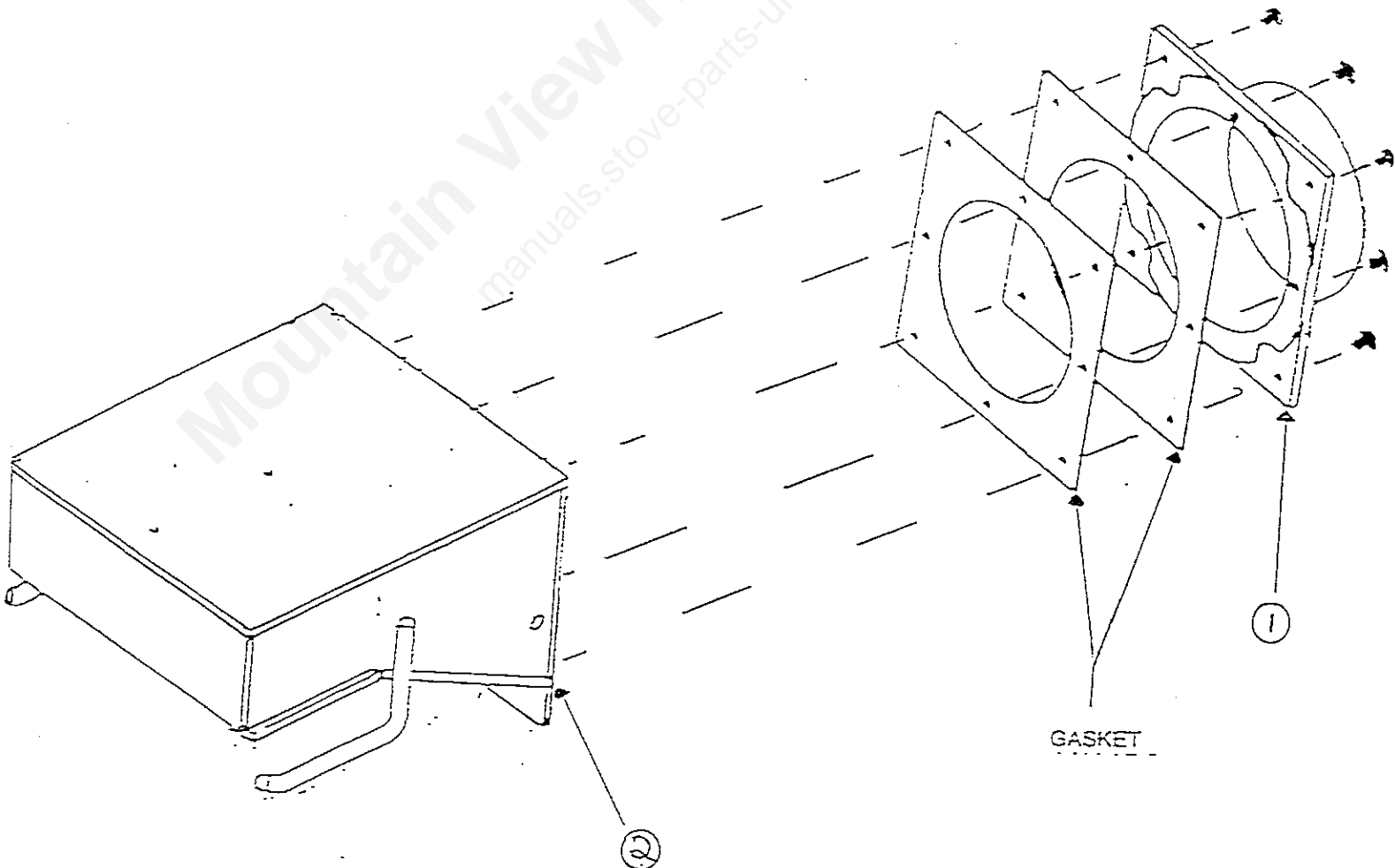
C92/KTC

Combustor housing & flue collar: Removal

1. Remove cabinet assembly (see cabinet removal).
2. Follow steps 2, 3 & 4 of bypass damper and rod assembly removal.
3. Remove eight hex head bolts holding flue collar (1) (remove flue collar & gasket).
4. Remove one hex head bolt from top of unit that supports combustor housing from the top.

NOTE: While removing bolt be sure you support the combustor housing (2).

5. Remove combustor housing (2).
- REVERSE STEPS TO INSTALL



C92/KTC

Cast iron liners: Removal

1. Remove outer cabinet (see cabinet removal).

Rear liner

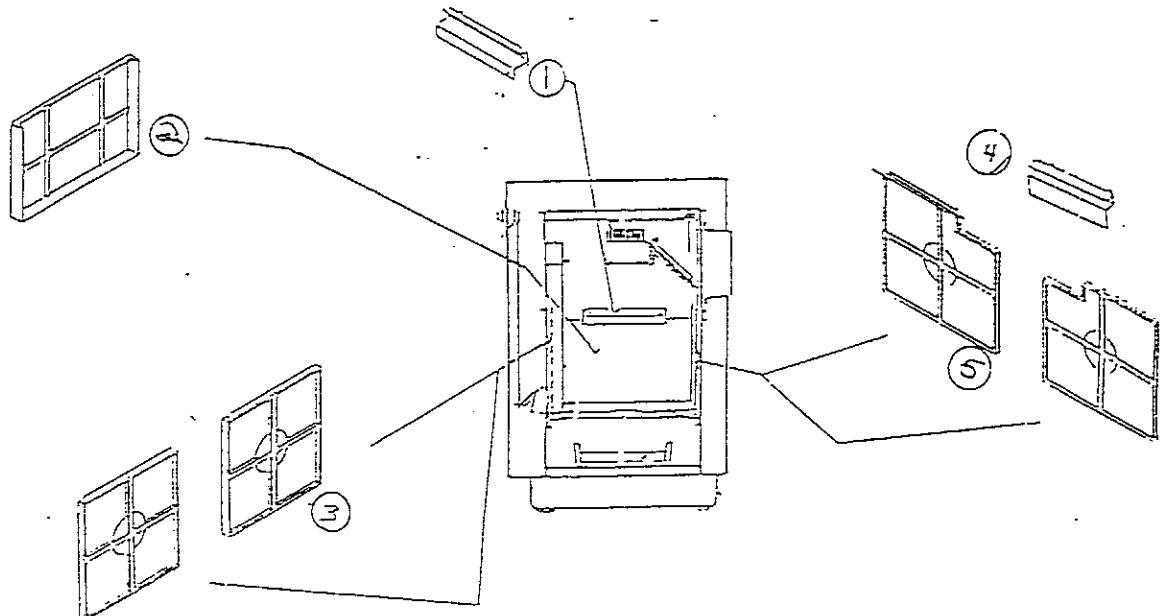
1. Remove the two hex nuts from the rear retainer (1).  
(radiation shield kit is held on with same two hex nuts).
  2. Remove rear retainer (1).
  3. Remove rear liner (2).
- REVERSE STEPS TO INSTALL

Left side liner

1. Remove two bolts and hex nuts from top of each side liner (3).
  2. Remove side liners
- REVERSE STEPS TO INSTALL

Right side liners

1. Follow steps 2, 3 & 4 of bypass damper and rod assembly.
  2. Remove two hex nuts from each side retainer (4).
  3. Remove side retainer (4).
  4. Remove side liners (5).
- REVERSE STEPS TO INSTALL



C92/KTC

Cast iron grate & angle grate support: Removal

1. Remove cast iron liners (see cast iron liner removal).
  2. Lift grate and remove from inner unit assembly.
  3. Remove four hex nuts from each angle grate.
  4. Remove angle grate support.
- REVERSE STEPS TO INSTALL

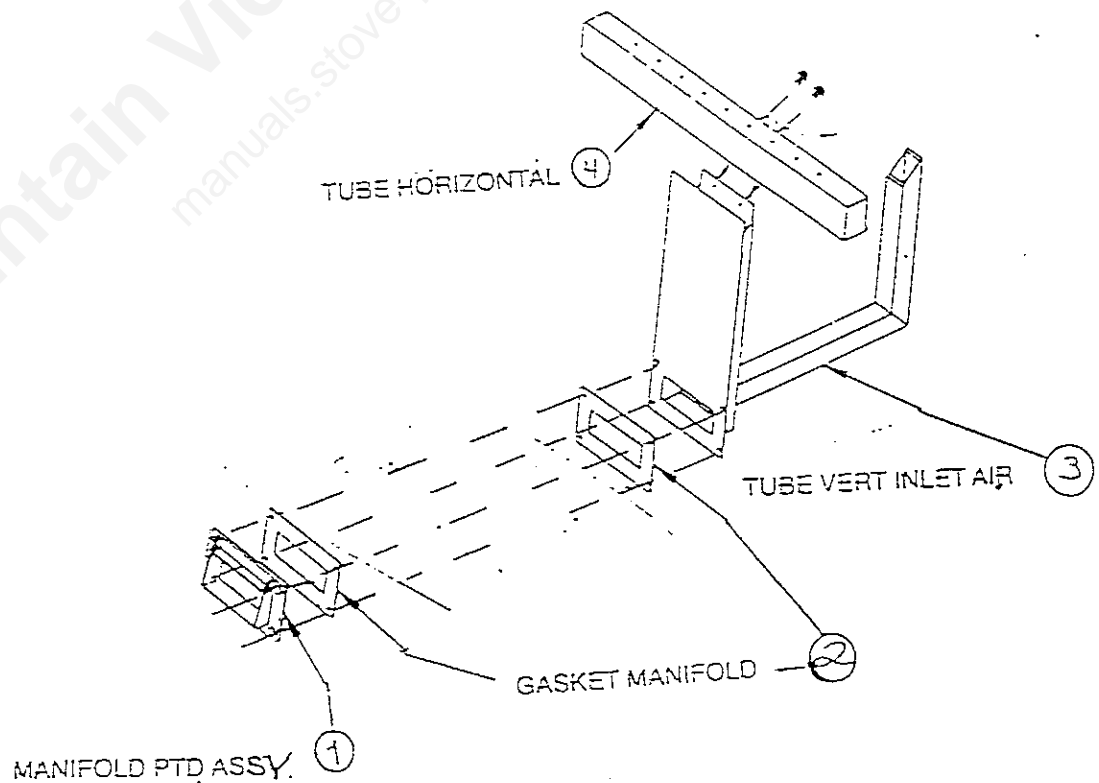
Mountain View Hearth Products  
manuals.stove-parts-unlimited.com

C92/KTC

Inlet air tube & manifold assembly: Removal

1. Remove outer cabinet (see cabinet removal).
2. Remove cast iron liners (see cast iron liner removal).
3. Remove cast iron grates and angle grate support (see cast iron grate and angle grate support removal).
4. Remove four Phillips head screws from manifold assembly (1) (inlet air tube is held on by same four screws).
5. Remove manifold assembly (1).
6. Remove two 1/4" screws from horizontal tube (4).
7. Remove horizontal tube (4).
8. Remove inlet air tube (3) (twist the inlet air tube 90 degrees toward you when removing).

REVERSE STEPS TO INSTALL



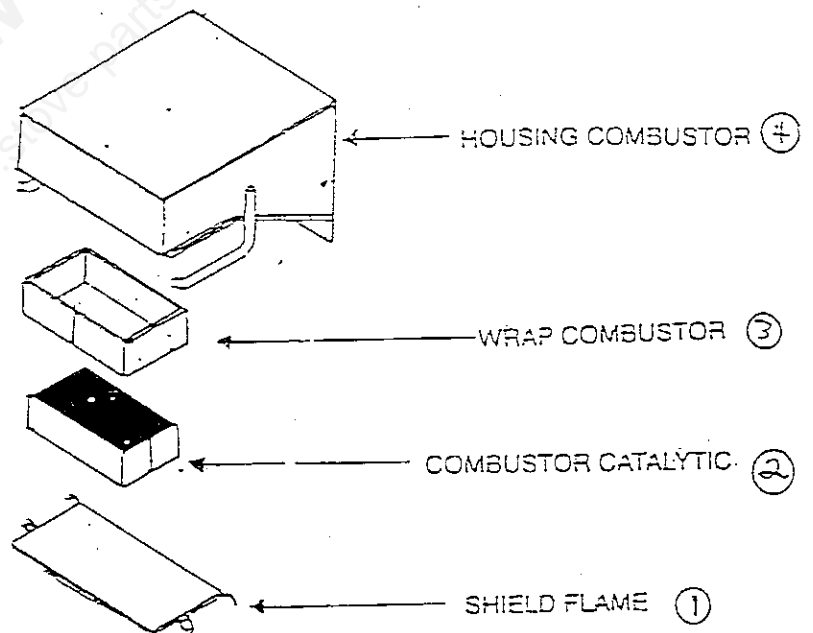
C92/KTC

Catalytic combustor: Removal

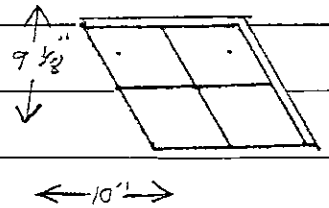
1. Remove flame shield (1) (see flame shield removal).
2. Push up slightly on one combustor in order to grasp the other combustor.
3. Remove combustors (2).
4. Remove combustor wrap (3).

Catalytic combustor: Installation

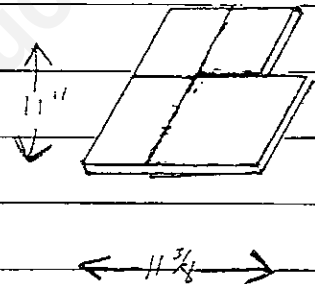
1. Clean combustors and housing (4) (replace is necessary).
2. Install new wrap around combustors.
3. Install assembly in housing.
4. Install flame shield (see flame shield installation)



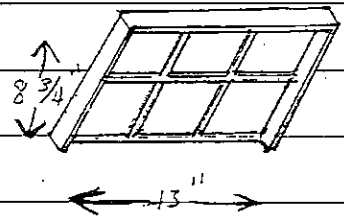
Left side Liner size  $9\frac{1}{8} \times 10$ "



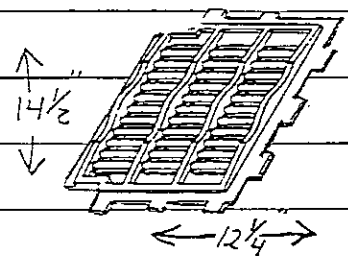
Right side Liner size  $11 \times 11\frac{3}{4}$ "



Rear Liner size  $8\frac{3}{4} \times 13$ "

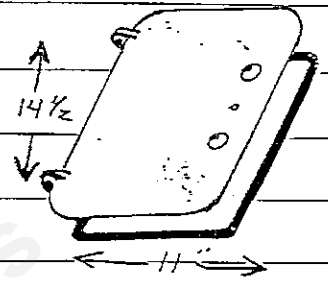


Grate size  $14\frac{1}{2} \times 12\frac{1}{4}$ "

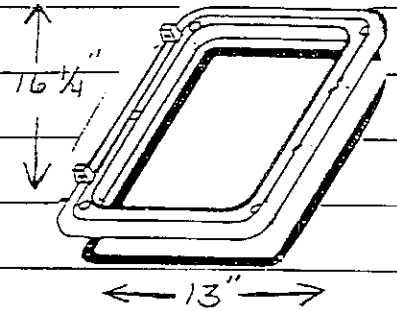


Note: Face the feed door when referring to left or Right side of unit.

Feed door size }  $14\frac{1}{2}'' \times 11''$   
Rope size }  $\frac{1}{2}''$



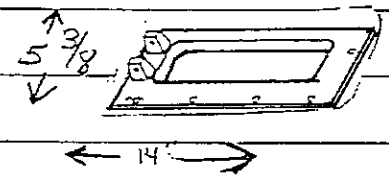
Frame door size }  $16\frac{1}{4}'' \times 13''$   
Rope size }  $\frac{1}{4}''$



Ash door size }  $4'' \times 11''$   
Rope size }  $\frac{3}{8}''$

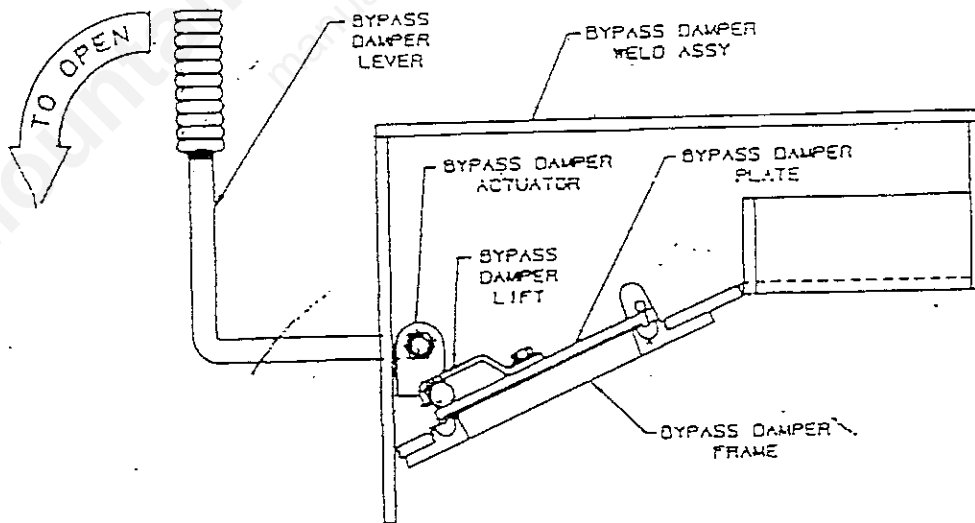
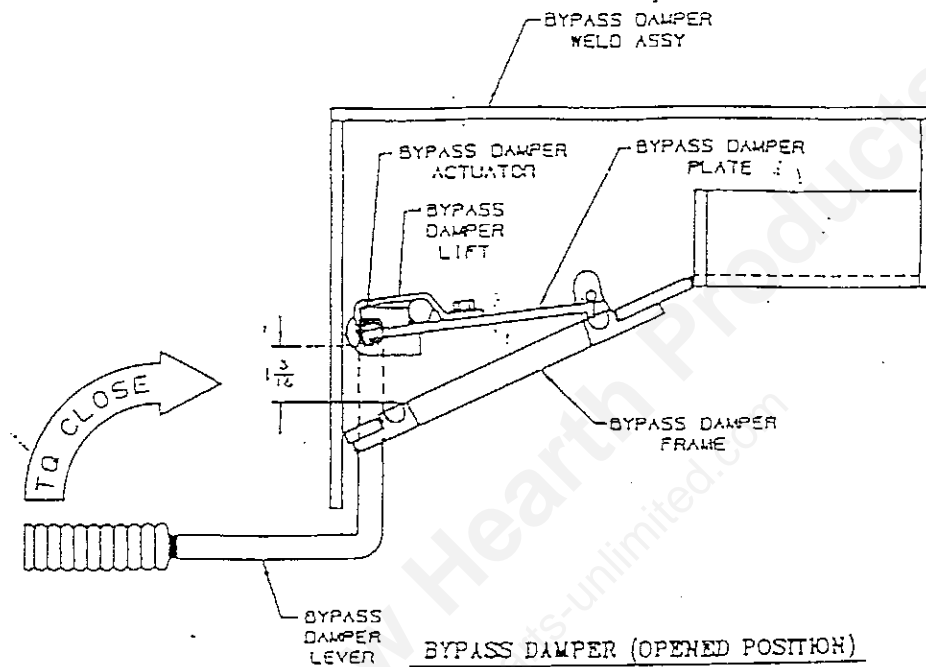


Frame door size }  $5\frac{3}{8}'' \times 14''$   
Rope size }  $\frac{1}{4}''$



C92/KTC

# Operation of Bypass Damper



**BYPASS DAMPER (CLOSED POSITION)**

REPAIR PARTS

Order all repair parts from your King dealer by supplying the following information:

- 1. Part Name
- 2. Part Number (not key number)
- 3. Model Number

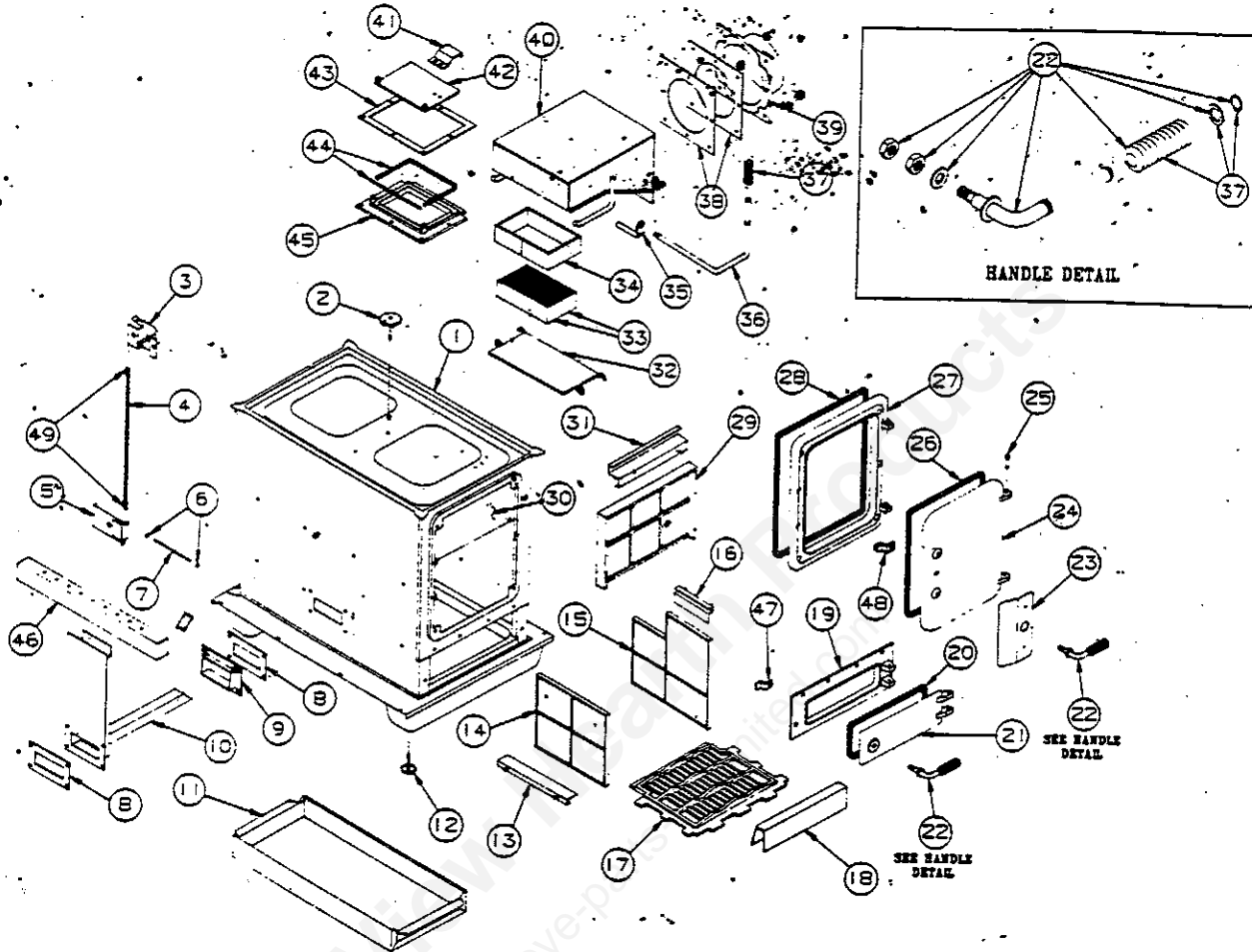
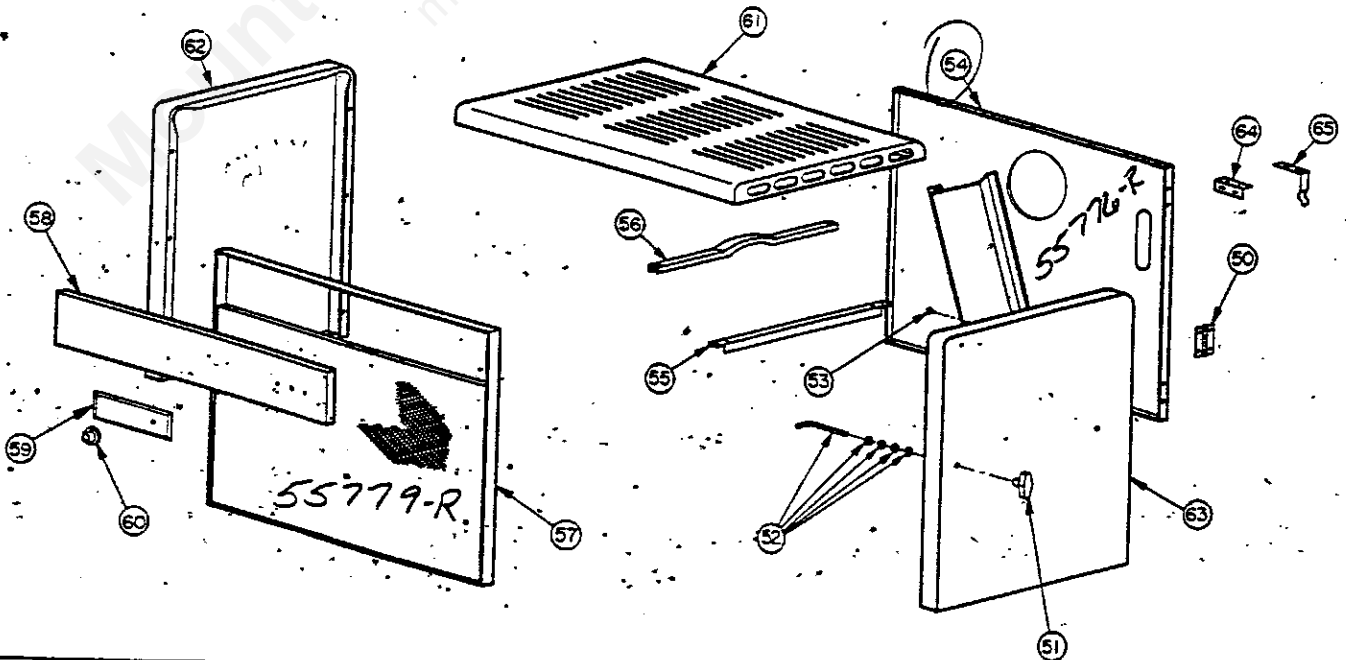


FIGURE 15 -- (HEATER REPAIR PARTS. SEE LEDGER ON NEXT PAGE FOR PART NAMES AND PART NUMBERS).



SEE FIGURE 15 FOR ILLUSTRATION  
OF PARTS.

KEY NO.	PART NAME (NOUN FIRST)	QTY. PER HTR.	KTC PART NO.
1	INNER UNIT ASSY. PTD.	1	054694
2	THERMOMETER PROBE	1	036049
3	THERMOSTAT ASSY.	1	009006
4	CHAIN	FT.	P5072
5	PLATE DRAFT ASSY. PTD.	1	054698
6	NUT ACORN	2	009028
7	PIN INLET COVER	1	009027
8	GASKET MANIFOLD	2	006145
9	MANIFOLD PTD. ASSY.	1	006401
10	TUBE VERT INLET AIR PTD.	1	055208
11	PAN ASH ASSY.	1	006562
12	LEVELER	4	009041
13	ANGLE GRATE SUPPORT	4	054701
14	LINER LEFT SIDE	2	053989
15	LINER RIGHT SIDE	2	053988
16	RETAINER SIDE LINER	2	054704
17	GRATE	2	051644
18	RETAINER ASH	1	054703
19	FRAME ASH DOOR	1	054709
20	ROPE FIBERGLASS	1	012053-01
21	DOOR ASH & ROPE ASSY.	1	054707
22	HANDLE KIT	2	024823
23	SHIELD RADIATION KIT	1	024819
24	DOOR FEED & ROPE ASSY.	1	016070
25	PIN DOOR	4	P626
26	ROPE FIBERGLASS	1	009535-03
27	FRAME DOOR & ROPE ASSY.	1	016081
28	ROPE FIBERGLASS	1	026592
29	LINER REAR	1	009669
30	CURTAIN SMOKE & ROD KIT	1	045383
31	REAR RETAINER	1	039584
32	SHIELD FLAME WELD ASSY.	1	054710
33	COMBUSTOR CATALYTIC	2	035199
34	WRAP COMBUSTOR	1	039352
35	ACTUATOR KIT	1	048113
36	LEVER BYPASS DAMPER	1	053534
37	HANDLE KNOB KIT	3	024822
38	GASKET	2	035177
39	COLLAR FLUE PTD.	1	036280
40	HOUSING COMBUSTOR W/ASSY.	1	051645
41	LIFT BYPASS DAMPER	1	048004
42	DAMPER BYPASS DRILLED	1	048002
43	GASKET BYPASS DAMPER	1	040079
44	ROPE FIBERGLASS KIT	1	046846
45	FRAME & ROPE ASSY.	1	046626
46	TUBE HORIZONTAL PTD.	1	055207
47	LATCH ASH DOOR KIT	1	024821
48	LATCH FEED DOOR	1	014713
49	"S" HOOK	2	011641
50	HINGE PAINTED	2	009054
51	HANDLE & SCREW ASSY.	1	011335
52	CATCH CABINET DOOR ASSY.	1	009917
53	BUMPER RUBBER	2	P6108
54	BACK CABINET ASSY. PTD.	1	055776
55	BAR-RIGHT CASING TIE PTD.	1	004090
56	BRACE TOP	2	C15301
57	SCREEN FRAME ASSY. PTD.	1	055779
58	PANEL TRIM	1	008338
59	PLATE LOGO	1	006474
60	KNOB	1	004798
61	CABINET TOP ASSY.	1	048700
62	CABINET END ASSY.	1	055780
63	DOOR CASING ASSY.	1	054202
64	BRACKET CLIP HANDLE PTD.	1	054769
65	CLIP HANDLE	1	048142