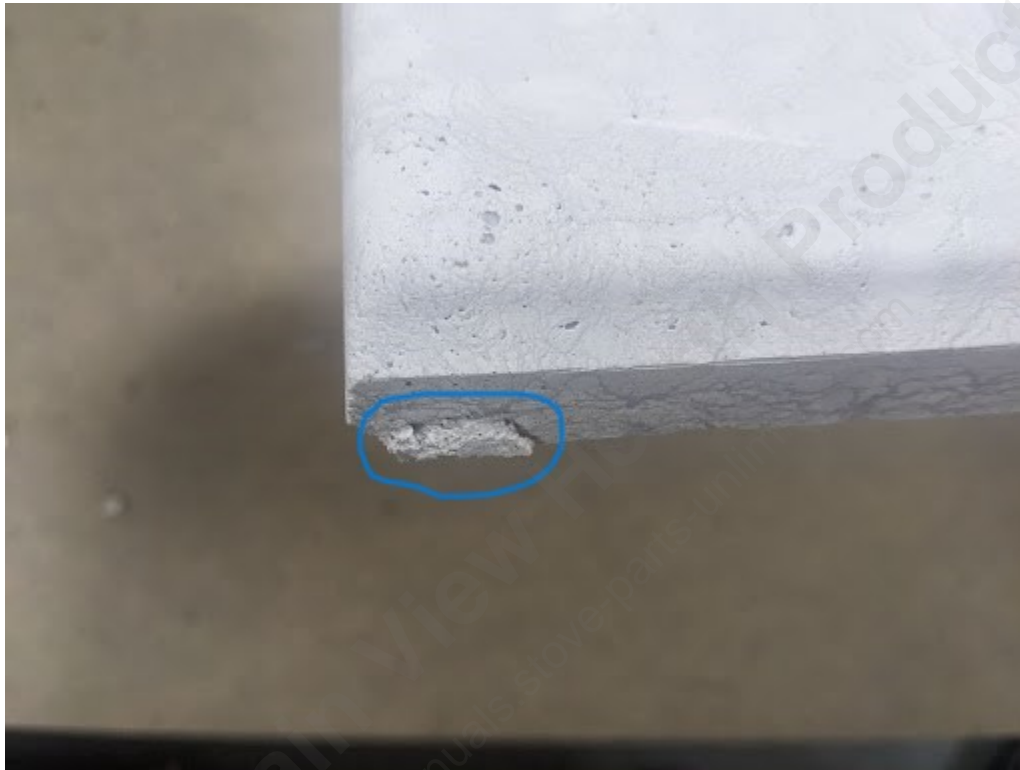


Access Door Falling Out

If the customer is having issues with the Access Door falling out on the Defiant 1975 2N1 or the Defiant CAT-C here are some things to check.



They should make sure that the feet shown above are still intact, if they are broken off or worn down you can suggest that they wedge a section of gasket into it to hold the access door in place. Shown below.





If the feet are intact and not worn down, the customer should check and see if the top of the refractory back is worn down. If it is then they would need to replace that refractory back.

If they get a new access panel and it is missing the feet we would be able to do a warranty even though this says it does not come with a warranty.