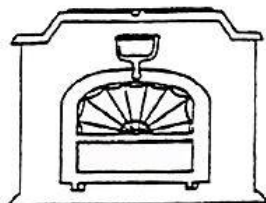


Resolute I- Was manufactured 12/23/81 through 6/28/83. It had a griddle that sat flush with the top.

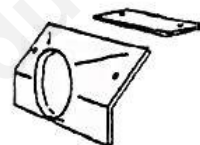
Resolute II- Manufactured 3/5/80 through 6/28/93 griddle sat above top.

Both have single drop-down door, single piece fireback & the damper pivoted on left & right ears.

RESOLUTE I

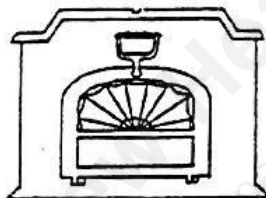


SINGLE DOOR

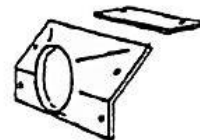


TWO HOLES
IN FLUE COLLAR

RESOLUTE II

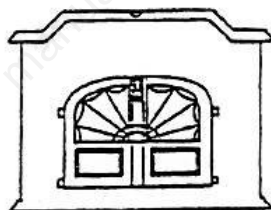


SINGLE DOOR



FOUR HOLES
IN FLUE COLLAR

RESOLUTE III



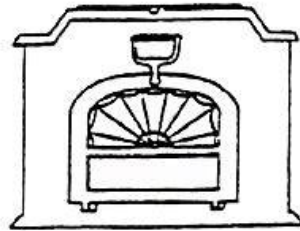
DOUBLE DOORS

SAME AS
RESOLUTE II

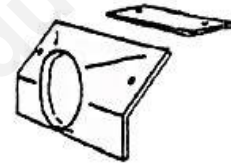
Model 0043 without glass, 0042 with glass panels, and 0058 coal stoves.

Resolute III stoves had two front doors, two-piece fireback & adjustable damper linkage, coal stove had 3 rocker grates. In 1985 double glass frames were added for clean glass, early models used SS frames and later models added a clip boss & used 3 clips per double glass.

RESOLUTE I

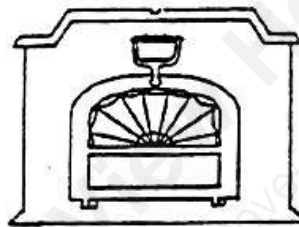


SINGLE DOOR

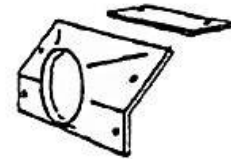


TWO HOLES
IN FLUE COLLAR

RESOLUTE II

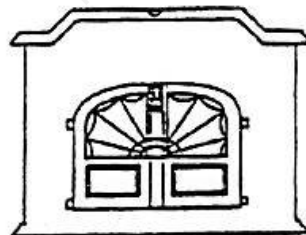


SINGLE DOOR



FOUR HOLES
IN FLUE COLLAR

RESOLUTE III



DOUBLE DOORS

SAME AS
RESOLUTE II