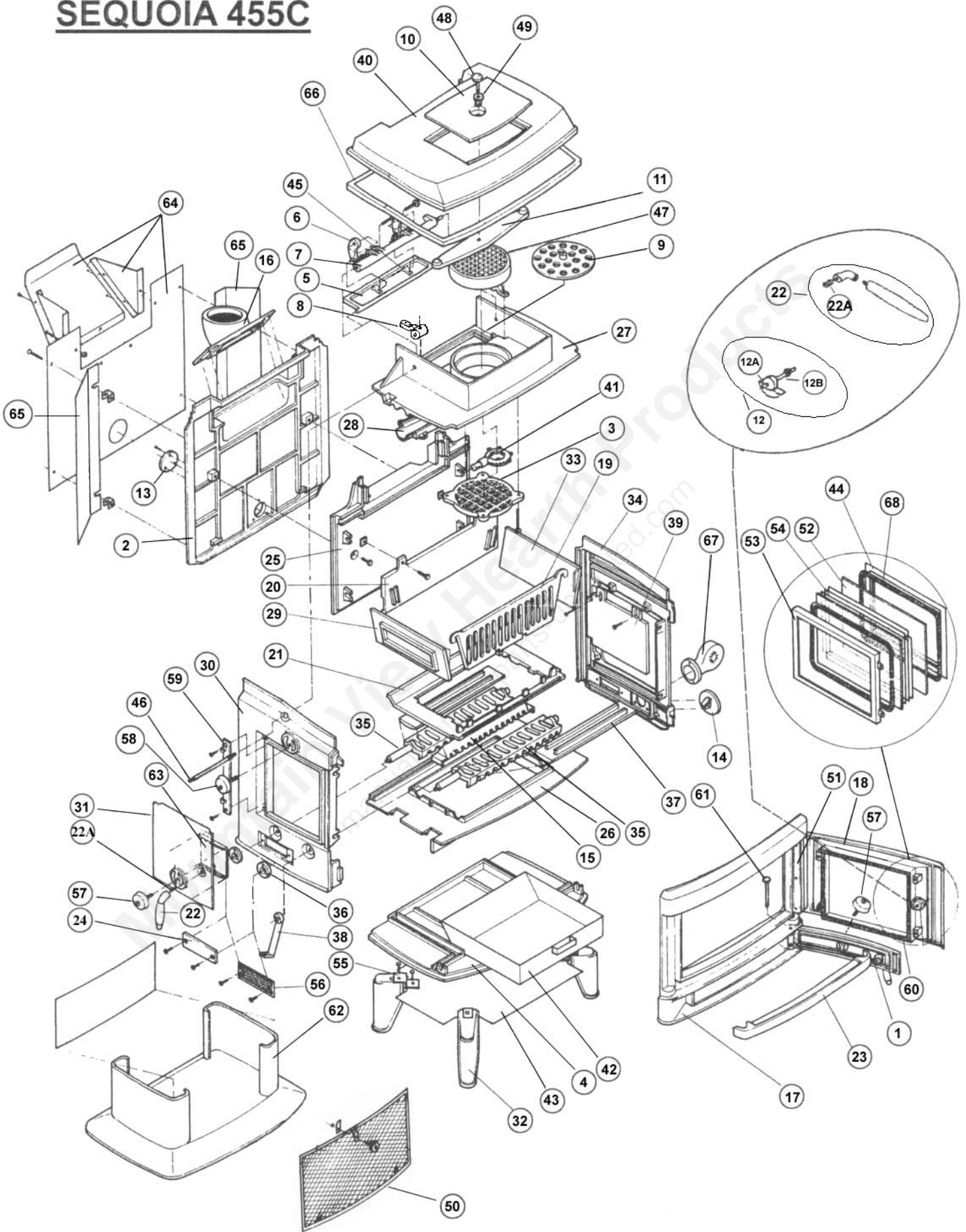




# SEQUOIA 455C



# FA 455 SEQUOIA (455C)

\* denotes dead product - none available

ITEM #	PART #	DESCRIPTION	ITEM #	PART #	DESCRIPTION
1	700-0820	Ash Door	34	700-0813*	Right Side
2	700-0822*	Back	35	700-0801	Rocker (Shaker) Grate
3	700-0837	Baffle	36	700-00G2	Shaker Grate Cap Assembly
4	700-0824*	Bottom	37	700-0803	Shaker Grate Cover
5	700-0806*	Bypass Gate	38	700-0835	Shaker Grate Tool
6	700-0512A	Bypass Gate Connector (rep 0523)	39	700-0800*	Side Half Wall (Right)
7	700-838A*	Bypass Gate Crank Assembly	40	700-0825	Top
8	700-0514	Bypass Gate Side Support	41	700-G814	Air Distributor (Round Tube)
9	700-0830*	Coal Strainer	42	700-G802	Ash Pan
10	700-0818*	Cook Top	43	700-G810	Bottom Heat Shield
11	700-0827	Cook Top Securing Rod			Bottom Heat Shield Hardware - 4-120-1378 8-120-1372 / 10-120-2474
12	000-0836	Door Catch Assembly w/ Shaft	44	700-0839	Brass Window Trim
12A	120-0536	5/16-18 x 5/16" Socket Set Screw	45	160-1036	Bypass Connector Clip
12B	700-G809	Door Shaft	46	700-G805	Bypass Operating Rod
13	700-0831	Fan Plate Rear	47	000-CB57	7" Catalyst
14	140-6063	Fan Cover Brass	48	000-0TH3	Catalyst Probe Thermometer (1 3/8" Shaft)
15	700-0802	Fixed Center Grate (16 3/4")	49	700-G812	Cooktop Sleeve
16	700-0400*	Flue Collar	50	700-G803	Firescreen
17	700-0804	Front	51	700-G806	Front Door Hinge
18	700-0819*	Front Door Sub 2160 Door Parts	52	700-1011	Glass 15 1/8" x 8 7/8"
700-1002/2-700-1012/700-1011/4-120-0993 + gaskets			53	700-0800*	Glass Frame
19	700-0936*	Front Grate	54	700-G801	Glass Spacer Frame
20	700-0808	Grate Back	55	700-0115	Heat Shield Bracket
21	700-0807*	Grate Frame	56	700-G811	Inlet Screen
22	000-A902	Fallaway Handle Complete	57	700-0011	Brass Dial Large
22A	700-00G3	Spring for Handle	58	700-0521	Brass Dial Small
23	700-0823*	Hearth	59	700-G808	Side Door Hinge Plate
24	700-0832*	Inlet Plate	60	700-0910	Front Door Gasket (5')
25	700-0812*	Inner Back	61	120-1837	Ash Door Hinge 5"
26	700-0805*	Inner Bottom	62	700-0855*	Pedestal
27	700-0857	Inner Top	63	700-0945	Air Diffuser Plate
28	700-0858*	Inner Top Channel	64	HS455*	Rear Heat Shield Assembly
29	700-0937*	Left Coal Grate Side	65	HS455W*	Rear Heat Shield Wngs
30	700-0816*	Left Side	66	000-A527*	Brass Trim
31	700-0817*	Left Side Door	67	000-9973	Fan Kit
32	700-0829	Leg	68	30000776	Glass Gasket 4.5' Each Glass
33	700-0938*	Right Side Coal Grate			

## SEQUOIA 455C HARDWARE LIST

120-4214	1/4 -20 x 1 1/2" Full Thread Cross Thread Stud <b>( 10-back, front &amp; top )</b>	120-0881	1/4 -20 x 3/4" Phillips Flat Head Screw <b>( 8-sides )</b>
120-4212	1/4 -20 x 1 1/4" Full Thread Stud <b>( 2-back )</b>	120-0811	1/4 -20 X 1 1/4" Phillips Flat Head Blk <b>( 2- shaker grate cover )</b>
120-2474	Washer, Zinc 1/4" Flat <b>(21-inner back, front, sides, hinges, grate back )</b>	120-2527	1/4 Fender Washer <b>( 2- shaker grate )</b>
120-3210	1/4 -20 Hex Nut <b>( 12-back, front, top, sides to bottom )</b>	120-3110	1/4 -20 Wing Nut <b>( 2- shaker grate )</b>
120-1338	1/4 -20 x 1/2" Hex Head Cap Screw <b>( 10-back, torsion bar clip, door panel )</b>	120-0809	1/4 -20 x 1" Black Phillips Flat Head Screw <b>( 4-top )</b>
120-1374	1/4 -20 X 3/4" Hex Head Cap Screw <b>( 10-inner back, flue collar )</b>	120-1372	1/4 -20 X 5/8" Hex Head Cap Screw <b>( 10-inlet plate, hinges, hearth )</b>
120-1392	1/4 -20 X 2" Hex Head Cap Screw <b>( 4- baffle )</b>	120-0563	5/16-18 x 5/16 socket Set Screw <b>( 3-door latches )</b>
120-0848	1/4 -20 X 2" Phillips Flat Head <b>( 1- air distributor )</b>	120-1837	Hinge Pin Ash Door 5" Flat Head <b>( 1-ash door )</b>
120-2473	Washer, Black 1/4" Narrow Flat <b>( 2-side hinge )</b>	120-2475	Washer, 1/4" x .5 od Flat Washer <b>( 3-hearth )</b>
120-1322	10-24 x 1/2" Hex Head Cap Screw <b>(3-fan plate )</b>	120-1376	1/4 -20 X 1" Hex Head Cap Screw <b>( 4-legs )</b>

## SEQUOIA 455C GASKETS

700-0910	7/16" Round Gasket	4'	Side Door
		5'	Front Door
		4'	Ash Door
120-3588	5/16" Medium Density 6ND Fiberglass Gasket	4'	Cook Top
		3.1'	Damper Opening
30000776	3/4" Flat Fiberglass Glass Gasket	4.5'	Glass
120-3535	7" Interam Gasket 24" Long x 3/4" Wide	1	Catalyst

# STOVE TEAR DOWN 455 SEQUOIA

## **Griddle and Probe Thermometer Removal**

Lift out the catalyst probe and the sleeve. Using a screwdriver turn the cook-top bolt counter-clockwise to release the cook-top securing rod and lift the cook-top out. The catalyst and interam gasket can now be lifted out.

## **Air Distributor Tube Removal (700-G814)**

Break cement seal at base and twist out. There are no screws to take out.

## **Baffle Removal (700-0837)**

Remove four bolts on each corner of the baffle. You access the bolts through the firebox. The baffle will drop into the firebox.

## **By-pass gate and Components**

All parts pertaining to the by-pass gate (700-0806) can be removed through the flue collar or the cook-top openings. However, if a total tear down is necessary, removal of the top will make the job easier. The flue collar (700-0400) should be removed first. This is done by removing the two ¼ - 20 x ¾" bolts (120-1374) in the flue collar. There is no gasketing in the flue collar, but it is cemented. It might be necessary to gently tap the base of the collar with a rubber dead blow hammer, or a block of wood and a hammer.

1. Remove the two ¼" bolts (120-1338) holding the by-pass clips (160-1036) to the by-pass gate (700-0806).
2. Remove two ¼" bolts (120-1374) on each by-pass gate side support (700-0514). The by-pass gate can now be lifted up, turned 90 degrees and removed.

**\*\*NOTE:** Use a 7/16" wrench or socket on the ¼" bolts.\*

3. To remove the by-pass gate connectors (700-0523), you will need at least one and possibly two 9/16" wrenches. Place the 1<sup>st</sup> 9/16" wrench on the 1<sup>st</sup> nut and remove. If the bolt also turns, place the 2<sup>nd</sup> wrench on the bolt head to prevent movement. Continue to remove the 1<sup>st</sup> nut and repeat the procedure with the 2<sup>nd</sup> nut. With both nuts removed, the bolt can be pushed out and the connectors can be removed.
4. To remove the gate crank (700-0838), rotate the crank and operating rod (700-G805) counter-clockwise until the rod disengages from the crank and remove the crank.

### **Internal parts (grates)**

With all of the coal burning parts removed, take out the grate back (700-0808) and the side half wall (700-0800) that are each held in place by two ¼ - 20 x ¾" bolts (120-1374) and washers (120-2474). Lift the grate frame (700-0807) and remove through the side load door. The fixed centre grate (700-0802) will lift out. To remove the shaker grates (700-0801) using the 3 mm Allen wrench, lift grates and slide to left to access end caps (700-00G2).

NOTE: With Sequoia, rockers must be lifted and slid to the left to access caps set screw.

### **Breaking down the Case**

Remove all doors before proceeding. The stove is broken down in the following order: top, front, left side, inner top, right side, inner back, inner bottom and back.

#### **Top**

To take off the top (700-0825), remove the four ¼ - 20 x 1" flat head screws (120-0809). They are located on the sides of the stove. Break the top free from the cement seam with a dead-blow mallet or a block of wood and a hammer.

#### **Front**

To detach the front (700-0804), remove the nuts (120-3210) and washers (120-2474) from the four ¼ - 20 x 1½" studs (120-4214) located in the inside corners of the firebox. With your hammer or wood block, break the cement seal of the front from the sides and the bottom, then remove the front.

#### **Left Side and Inner Top**

The left side (700-0816) should be removed next. Remove nuts (120-3210) and washers (120-2474) from the studs. One in the ash pan area below the firebox and two in the firebox (one in the lower rear and one in the upper rear). To remove the inner top (700-0857), loosen but DO NOT remove the nuts and washers on the studs on the right side and break the cement seal. Now break the seal on the inner top and remove.

#### **Right Side, Inner Back, Inner Bottom and Back**

Remove the right side (700-0813), inner back (700-0812) and inner bottom. Remove the stove back.

# ASSEMBLY INSTRUCTIONS SEQUOIA

1. Lay the bottom on your workbench and cement the areas for the partitions to set into.
2. Set the back on your workbench and apply two 1 ¼" studs. Cement and position it on the bottom. Secure it with ¼" nuts and washers.
3. Place the inner bottom on the bottom and cement.
4. Cement the inner back and position it onto the inner bottom. Secure it to the back with ¼" bolts (¾" 1g) and washers.
5. Apply three 1 ½" 1g studs to the right end and then cement. Now apply the right end to the stove and just start the ¼" nuts with washers.
6. Set the inner top into the stove.
7. Apply three 1 ½" 1g studs to the left end and 5/16" gaskets around the dial damper opening (secure it with thermo-cement), then cement. Now put the by-pass rod into the left end and apply the end to the stove. Hold in place with ¼" nuts and washers. Tighten the nuts on the left and right ends leaving the top back right and the bottom left front nuts loose.
8. Now apply the hinge to the left end, with the pins pointing up, and secure it with ¼" bolts (5/8" 1g) and washers.
9. Place the rocker grates through the left end, apply the grate caps and secure them with an Allen wrench. Now position the grates back into the stove.
10. Cement the inner top channel and groove for the air distribution on the inner top. Place the air distributor in the inner top and sandwich it with the inner top channel. Secure it in place with 2" 1g flat head ¼" screws.
11. Cement the area for the by-pass gate and apply 5/16" gasket all around.
12. Set the baffle over the opening in the inner top with fingers facing you and secure with four ¼" bolts 2" 1g.
13. Place the covers over the grate and put the flat head screws through the cover and the grate, apply a fender washer over the screw and secure them all with the wing nut.
14. Set the fixed grate into the stove.
15. Apply the grate frame over the rocker and fixed grates.
16. Place the half wall inside on the right end and secure it with two ¼" bolts (¾" 1g).

17. Place the grate back into the stove and secure it to the inner back with two ¼" bolts (¾" 1g) and washers.
18. Tighten all bolts for the grate back and half wall. Also tighten the nut on the left end bottom front and nut on the right end top back.
19. Cement the left load door perimeter and apply gasket all around. Hang the load door on the hinge already applied to the left end.
20. Set the front on your workbench and apply four studs (1 ½" 1g). Cement the front and attach it to the stove. Secure it with four ¼" nuts and washers.
21. Attach the ash door with the hinge pin.
22. Apply and secure two inlet plates (one on left and right ends) with four ¼" flat head screws (¾" 1g).
23. Apply both shroud screws (one each side) using flat head ¾" 1g ¼ - 20 screws.
24. Apply the fan plate to the rear of the stove and secure with three 10 – 24 bolts (½" 1g).
25. Apply and tighten four heat shield bolts ¼ - 20 x ½" 1g onto the back plate.
26. Place the clips onto the by-pass gate and start the ¼" bolts (½" 1g). Leave loose.
27. Set the connectors between the ears on the crank and secure them in place with 3/8" bolt and nut. Tighten only enough to engage the locking feature of the nut.
28. Set the by-pass gate into position.
29. Set the by-pass crank into position and thread the by-pass rod through the inner top and into the by-pass crank. Engage the by-pass connectors (already applied to the crank) onto the by-pass gate and secure them with clips (already applied to the gate).
30. Apply and secure the by-pass supports with ¼" bolts (¾" 1g).
31. Check the operation of the by-pass gate.
32. Apply and secure the ash lip to the front of the stove using ¼" bolts (5/8" 1g) and washers (½" OD).
33. Set the top on your workbench and cement.
34. Apply the top to the stove and secure it with four ¼" flat head screws (1" 1g).
35. Apply two flat head screws (¾" 1g) into the top for the shroud.

36. Cement the perimeter of the front door and apply 3/8" gasket all around.
37. Cement the window opening and apply 3/16" gasket all around.
38. Place the hinge on the door (long end up) and hold in place with 1/4" bolts (5/8" 1g) and washers. Only finger tighten.
39. Insert the front door (hinge already applied) onto the front. Snug centre bolt and adjust the door line. Now tighten all the rest of the hinge bolts.
40. Cement the cook-top opening, apply the gasket and place the cook-top back into place.

Mountain View Hearth Products  
manuals.stove-parts-unlimited.com